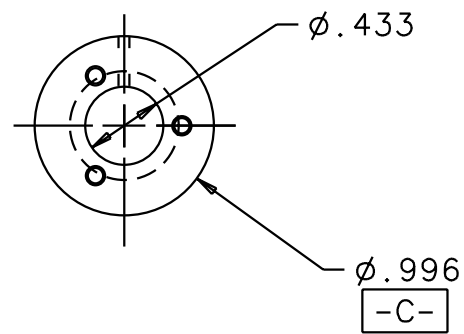
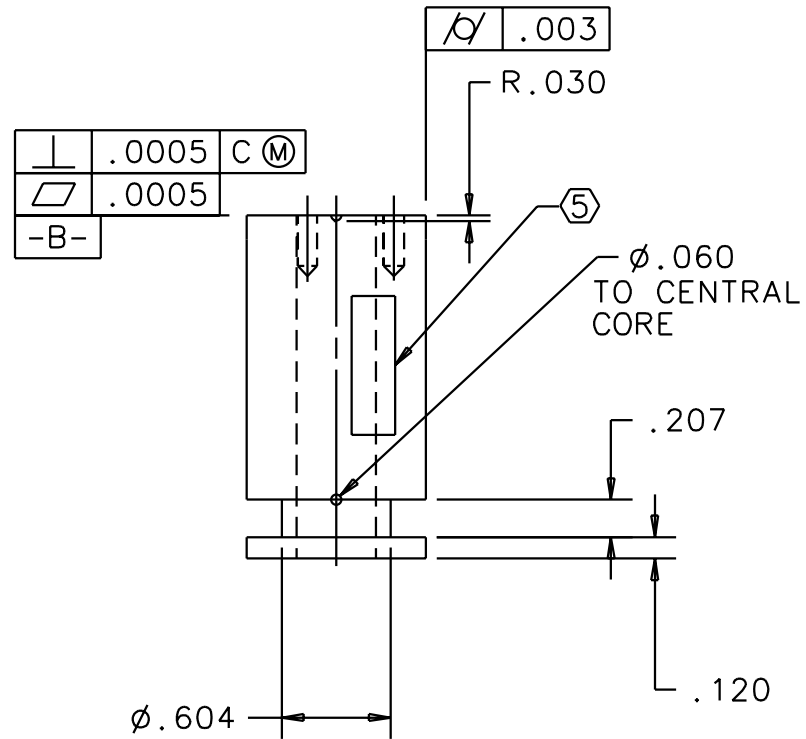
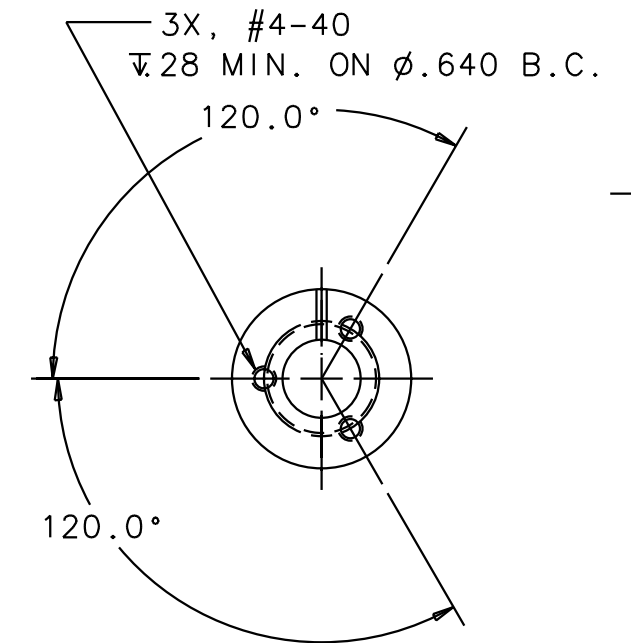
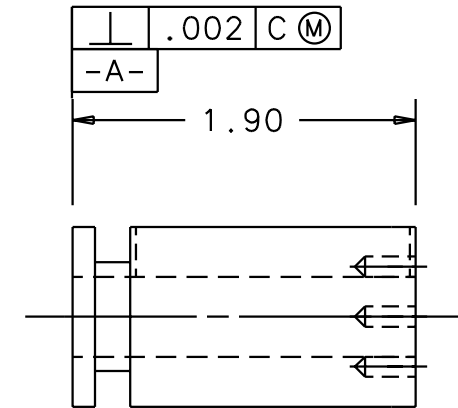


NOTES: (UNLESS OTHERWISE SPECIFIED)

1. FILLETS: R .02/.01 ON ALL EDGES AND HOLES.
  2. MATERIAL: ALUMINA
  3. SURFACE FINISH TO MEET OR EXCEED  $\sqrt{16}$  ON ALL OUTSIDE SURFACES. ID NEED NOT BE POLISHED.
  4. COAT ENTIRE HEAD WITH A THIN LAYER OF CONDUCTIVE MATERIAL TO PROVIDE UNIFORM RESISTIVITY OF .25 TO 1,000,000 OHMS/SQUARE.
- ⑤ LASER MARK THE DRAWING PART NUMBER ON NOTED SURFACE OF PART FOLLOWED BY "S/N" THEN A THREE DIGIT SERIAL NUMBER. SERIAL NUMBERS TO START AT 001 FOR FIRST PART AND PROCEED IN A CONSECUTIVE MANNER TO A MAXIMUM OF 999, FOR EACH SUCCEEDING PART PRODUCED. USE 0.13 HIGH CHARACTERS.  
EXAMPLE: D000065-A S/N001



REV	DATE	DRAWN BY	CHECKED	DCC	DCN/DESCRIPTION
A	5/9/00	J. Romie			E000240/INITIAL RELEASE
B	5/26/00	J. Romie			E000264/ADD TOLERANCES
C	9/7/00	J. Romie			E000420/COMPLETE REDESIGN



QTY REQD	PART OR IDENTIFYING NO	NOMENCLATURE OR DESCRIPTION	MATERIAL SPECIFICATION	ITEM NO
PARTS LIST				
UNLESS OTHERWISE SPECIFIED DIMENSIONS ARE IN INCHES TOLERANCES ARE: DECIMALS ANGLES		APPROVALS		DATE
0.XX=±0.01 0.XXX=±0.005 ANGLES=±0.5°		DRAWN J. ROMIE		2/00
MATERIAL ALUMINA		CHECKED		
FINISH SEE NOTES		TITLE LIGO CALIFORNIA INSTITUTE OF TECHNOLOGY MASSACHUSETTS INSTITUTE OF TECHNOLOGY		
SCALE		SIZE B		DWG NO. D000065
FILENAME /home/dcc/docs/D000065.pdf		REV C		SHEET 1 OF 1