

6

5

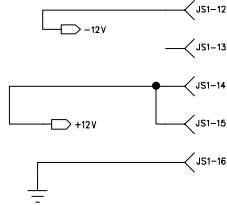
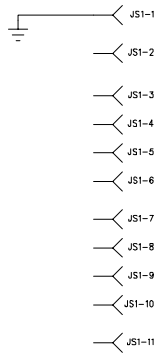
4

3

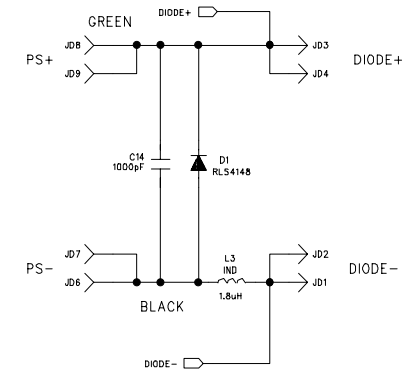
2

1

REVISION RECORD			
LTR	ECO NO:	APPROVED:	DATE:

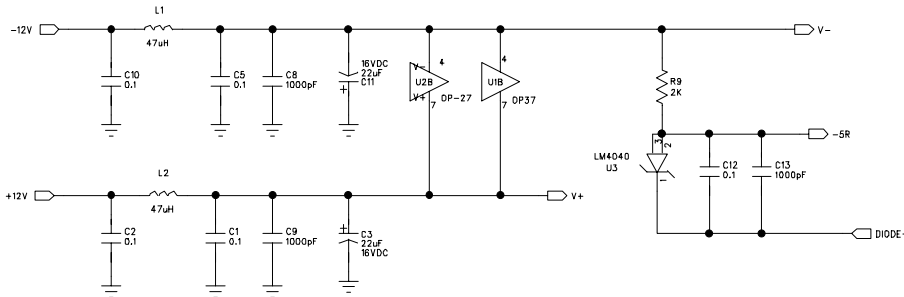
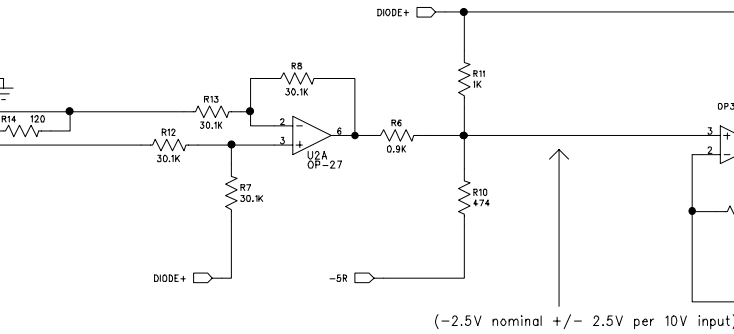
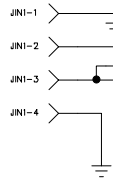


+/- 10V input for +/- 250mA output



NOTE:  $R_f/R_{in} = R_g/R_{in}$  for CMR

INPUT CONN



# LIGHTWAVE ELECTRONICS

TITLE:			
SCH LIGO FAST DIODE INPUT			
DRAWN: F. ADAMS	DATED:	USED ON ASY #:	DRAWING NO:
DESIGN BY: J. ALONIS / S. GOMES	DATED:	4-3278	4-3278
REV ENG: S. GOMES	DATED:		B
PROD ENG: M. ALMEIDA	DATED:		

LIGO-D000177-B-C 5/9/00