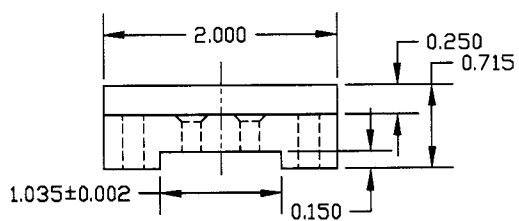
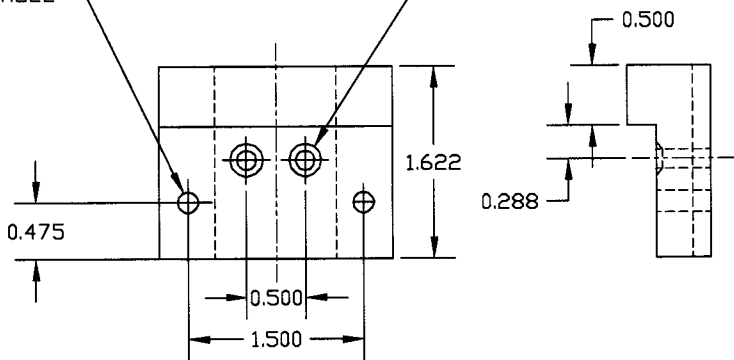


0.180 DIAM THRU HOLE

THRU HOLE FOR M4 X 2  
(SEE HOLE NOTE)



REVISIONS				
ZONE	REV	DESCRIPTION	DATE	APPROVED
	00	Initial DWG by UF Luke Williams	5/02/02	
	01	Revised by N. Hindman/B. Bland Thickness of spacer was too thin for proper counterboring. By removing the EDM base, this thickness can be increased as shown here.	2/26/04	

HOLE NOTE:

2 HOLES COUNTERSUNK  
SUFFICIENTLY TO ALLOW  
TOPS OF M4 FLAT HEAD  
SCREWS TO SIT BELOW  
SURFACE

NOTE: BREAK ALL SHARP CORNERS

TOLERANCES: .XXX±0.01

ALL DIMENSIONS IN INCHES

DELTRIN AF	LIGO UF DESIGN			
	EDM SPACER			
HINDMAN/BLAND	SIZE	FSCM NO.	DWG NO.	REV
2/26/2004			D000225-02-D	01
SCALE NTS		SHEET		