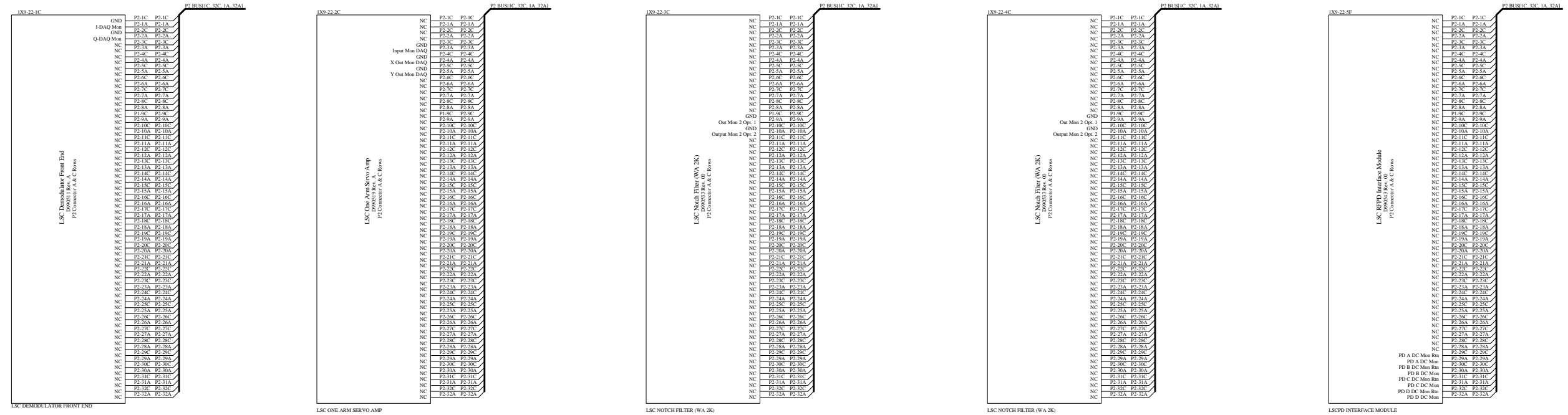
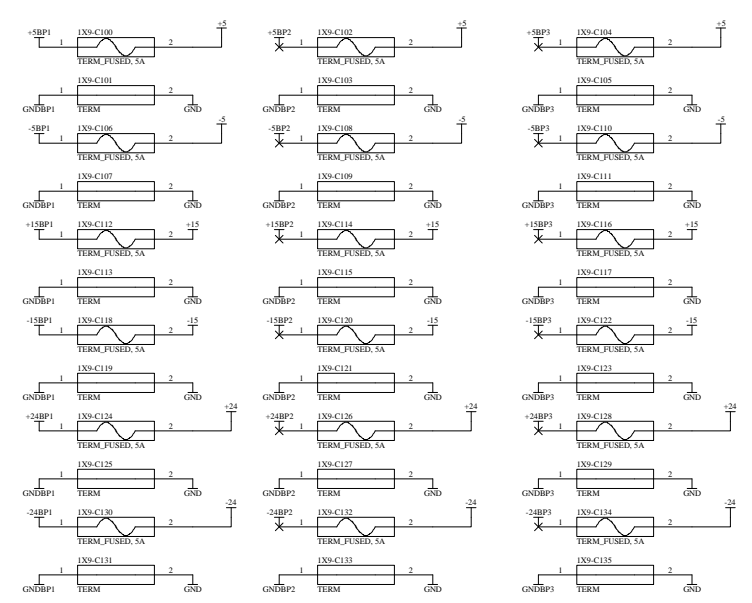
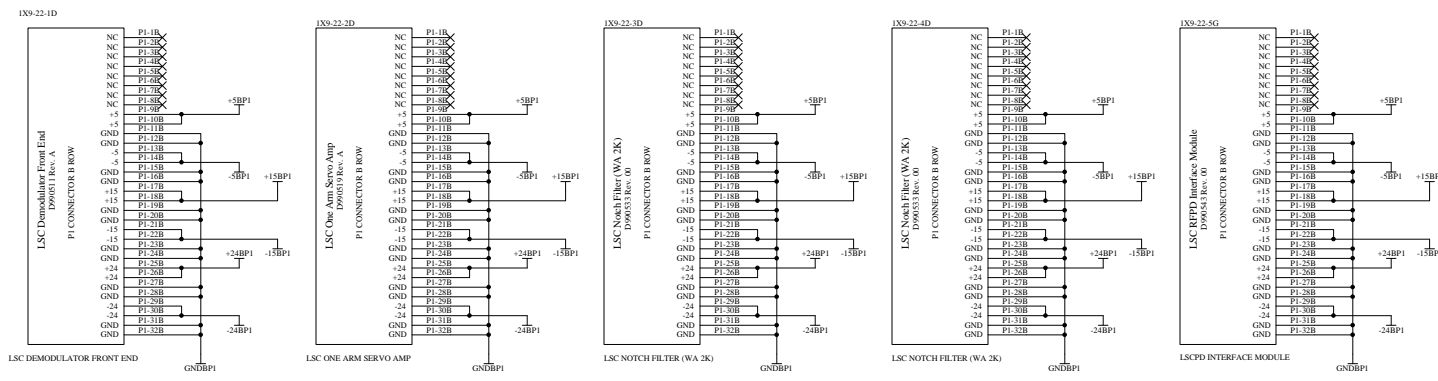
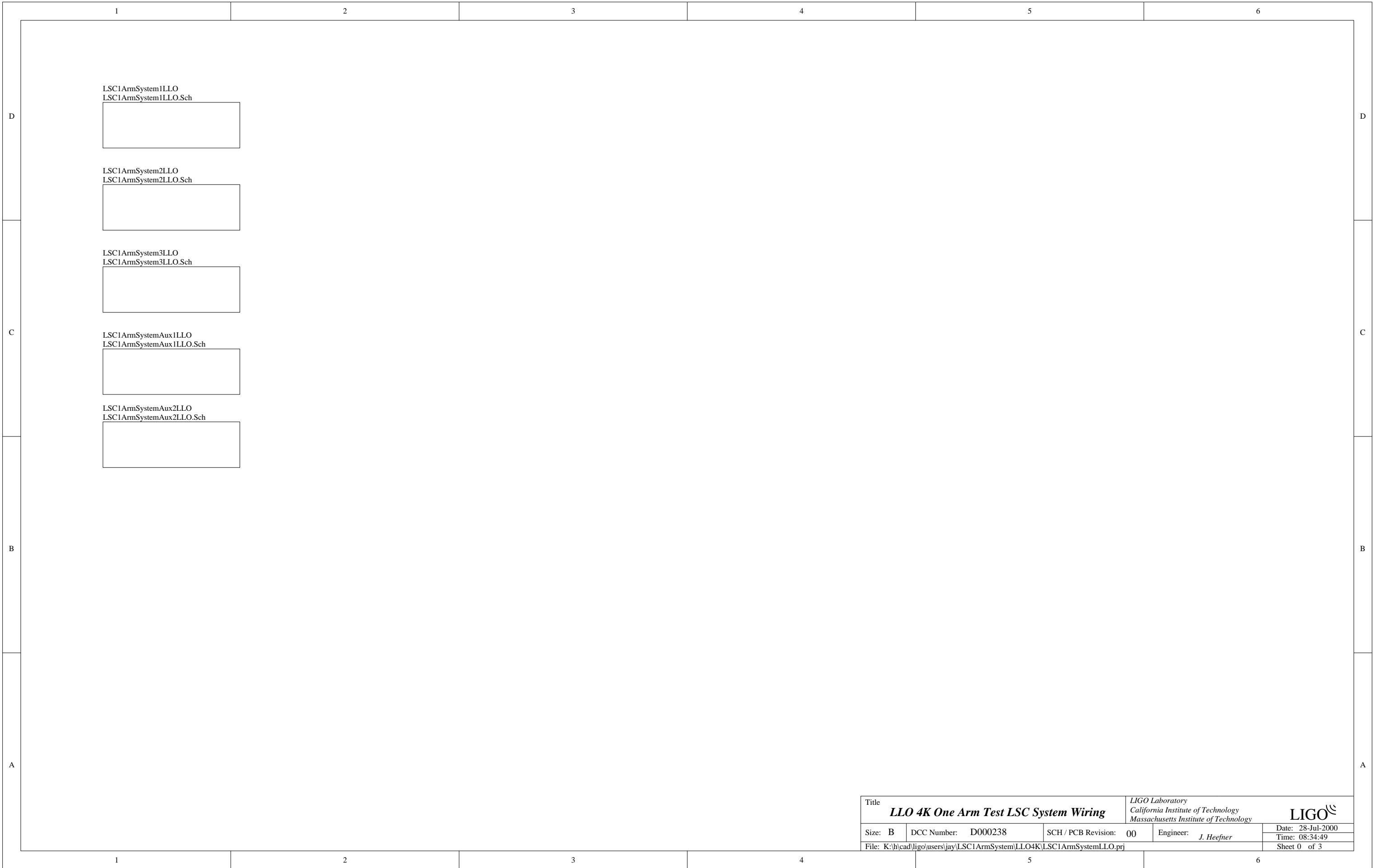






Note:  
Power Connections for Eurocard modules are made through the backplane and are designated as XXBP1. Bulk power supply connections to the eurocard backplane lugs are designated +XX.





LSC1ArmSystem1LLO  
LSC1ArmSystem1LLO.Sch

LSC1ArmSystem2LLO  
LSC1ArmSystem2LLO.Sch

LSC1ArmSystem3LLO  
LSC1ArmSystem3LLO.Sch

LSC1ArmSystemAux1LLO  
LSC1ArmSystemAux1LLO.Sch

LSC1ArmSystemAux2LLO  
LSC1ArmSystemAux2LLO.Sch

Title		<i>LIGO Laboratory</i> California Institute of Technology Massachusetts Institute of Technology		<b>LIGO</b> <sup>™</sup>
<b>LLO 4K One Arm Test LSC System Wiring</b>				
Size: B	DCC Number: D000238	SCH / PCB Revision: 00	Engineer: J. Heefner	Date: 28-Jul-2000
File: K:\hcad\ligo\users\jay\LSC1ArmSystem\LL04K\LSC1ArmSystemLLO.prj				Time: 08:34:49
				Sheet 0 of 3