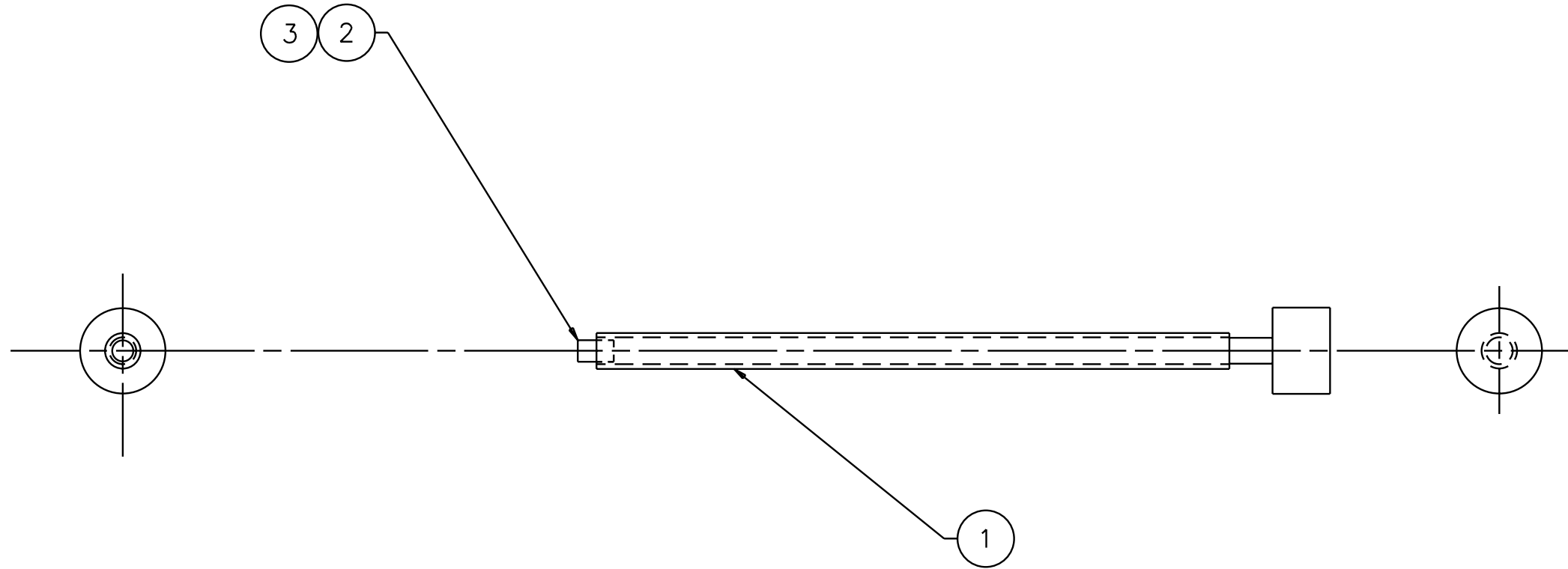


NOTES, UNLESS OTHERWISE SPECIFIED:
 1. SEE SPECIFICATION FOR ASSEMBLY
 PROCEDURE, LIGO-E000388,
 SENSOR/ACTUATOR ASSEMBLY.

REV	DATE	DRAWN BY	CHECKED	DCC	DCN/DESCRIPTION
A	10-27-00	J.Romie			E000482/INITIAL RELEASE



QTY REQD	PART OR IDENTIFYING NO	NOMENCLATURE OR DESCRIPTION	MATERIAL SPECIFICATION	ITEM NO
	A/R 2886000	VAC SEAL EPOXY		3
1	D960501	MAGNET		2
1	D970615	PAM SCREW		1

UNLESS OTHERWISE SPECIFIED DIMENSIONS ARE IN INCHES TOLERANCES ARE:		APPROVALS		DATE	CALIFORNIA INSTITUTE OF TECHNOLOGY MASSACHUSETTS INSTITUTE OF TECHNOLOGY	
FRACTIONS	DECIMALS	DRAWN	GROUP	10/00	LIGO	
	0.XX=±0.01	J. Hazel			TITLE	
	0.XXX=±0.005	CHECKED			PAM SCREW ASSEMBLY	
	ANGLES=±0.5°				SIZE	DWG NO.
DO NOT SCALE DRAWING					B	D000255
MATERIAL NON-MAGNETIC STAINLESS					REV	A
FINISH					SHEET 1	
NEXT ASSEMBLY D000069		SCALE 2/1		FILENAME /home/dcc/docs/D000255.pdf		