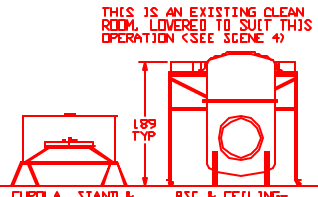


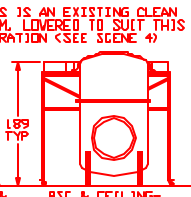
STAGING FRAME WITH CENTERED CLEAN ROOM

SCENE 1



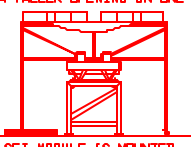
CUPOLA, STAND & LIFT FIXTURE

SCENE 1



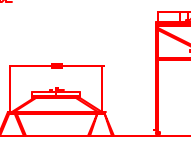
BSC & CEILING-CENTERED CLEAN ROOM (USE SHORT-SIDED CLEAN ROOM TO CLEAR GATE VALVES)

SCENE 1



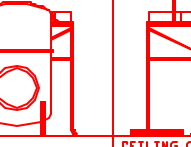
SEI MODULE IS MOUNTED ON STAGING FRAME WITH FORK LIFT, AND INTERFACE IS BOLTED

SCENE 2



STAND ALONE

SCENE 2



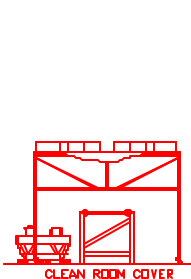
BSC DOME IS REMOVED, WORK PLATFORMS INSTALLED AND CHAMBER IS COVERED. CLEAN ROOM CEILING IS OPEN

SCENE 3

SUS/SEI MOUNTING WILL REQUIRE THAT THE FRAME HAVE AN OPEN SIDE

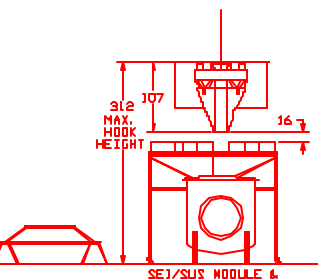
CEILING COVER IS REMOVED, CUPOLA & LIFT FIXTURE ARE MOVED INTO PLACE. SUS IS MOUNTED TO SEI WITH FORK LIFT & ALIGNED. THEN LOWER TYVEK SOCK IS INSTALLED DURING LIFT PRIOR TO SCENE 4

SCENE 3



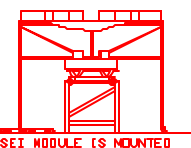
CLEAN ROOM COVER IS REPLACED, NEXT SEI IS STAGED

SCENE 4



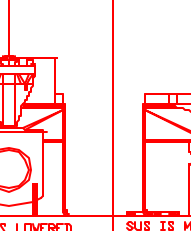
SEI/SUS MODULE & CUPOLA ARE PLACED OVER CLEAN ROOM

SCENE 4



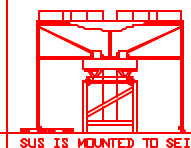
SEI MODULE IS MOUNTED ON STAGING FRAME WITH FORK LIFT, AND INTERFACE IS BOLTED

SCENE 5



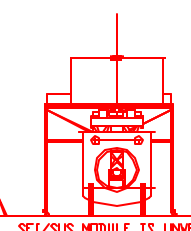
CUPOLA IS LOWERED INTO PLACE IN CLEAN ROOM CEILING

SCENE 5



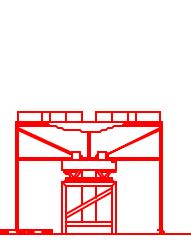
SUS IS MOUNTED TO SEI WITH FORK LIFT & ALIGNED OVER THE NEXT FEW SCENES

SCENE 6



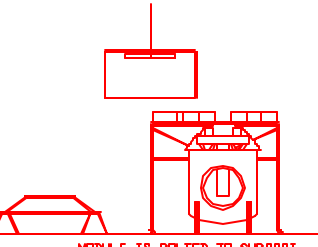
SEI/SUS MODULE IS UNWRAPPED, CHAMBER COVER IS REMOVED, AND MODULE IS LOWERED INTO PLACE

SCENE 6



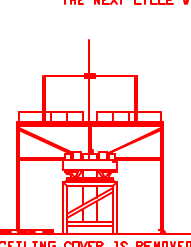
CHAMBER COVER REMOVED, DOME REINSTALLED

SCENE 8



MODULE IS BOLTED TO SUPPORT TUBES AND WORK PLATFORMS ARE REMOVED. LIFT FIXTURE IS LIFTED, CHAMBER & MODULE ARE COVERED, AND CUPOLA & LIFT FIXTURE ARE REMOVED

SCENE 7



CEILING COVER IS REMOVED, CUPOLA & LIFT FIXTURE ARE MOVED INTO PLACE. LOWER TYVEK SOCK IS INSTALLED OVER SUS DURING LIFT PRIOR TO SCENE 4

SCENE 8

AFTER THIS SCENE, PLACING OF THE CLEAN ROOM AND REMOVAL OF THE DOME OF THE NEXT BSC WILL START THE NEXT CYCLE WITH SCENE 4.

REV	DATE	DESCRIPTION	BY	CHECKED
1	8/21/20	REVISIONS TO PARTS LIST		
<p> LIGO PROJECT LIGO (I) SEI & SUS INSTALLATION SCENARIO </p>				
<p> 0000260-00 20 NOT SCALE DRAWING </p>		<p> 1000260-00 </p>		