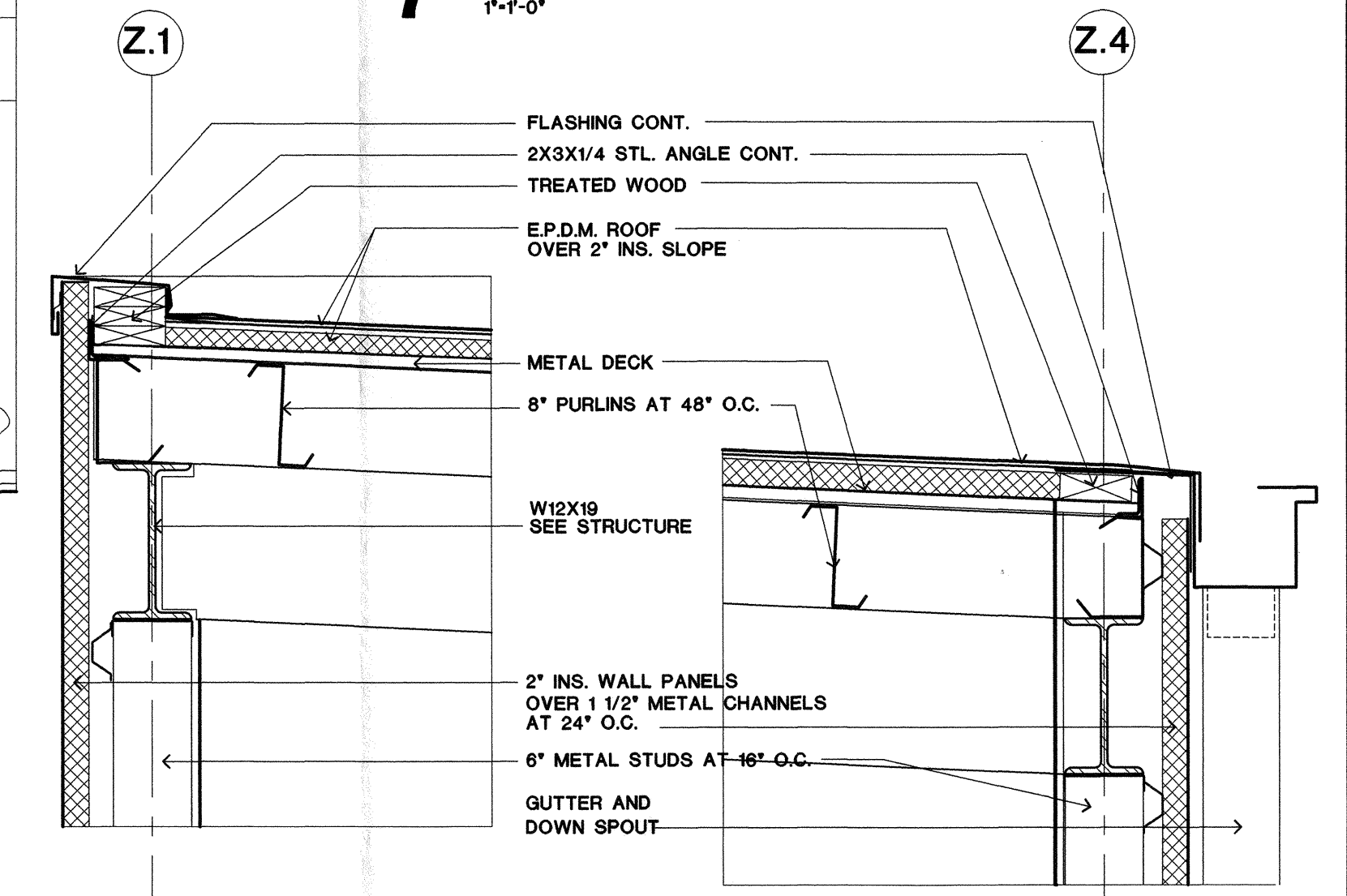


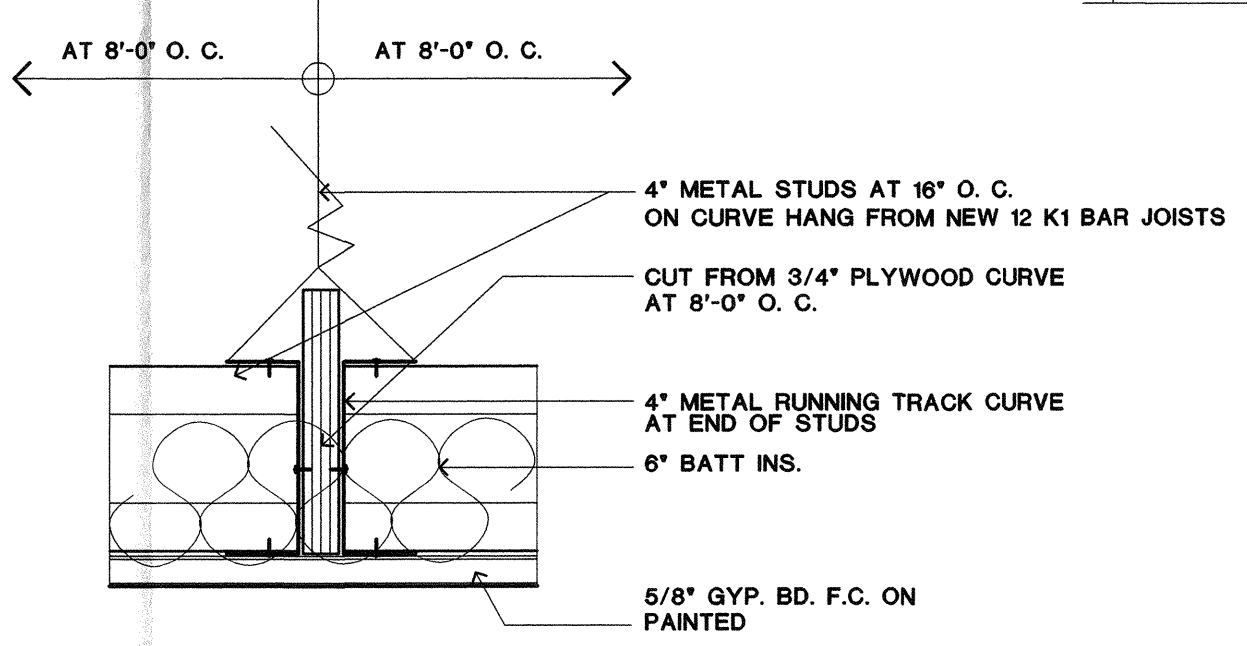
**7 DETAIL**  
1'-1'-0"



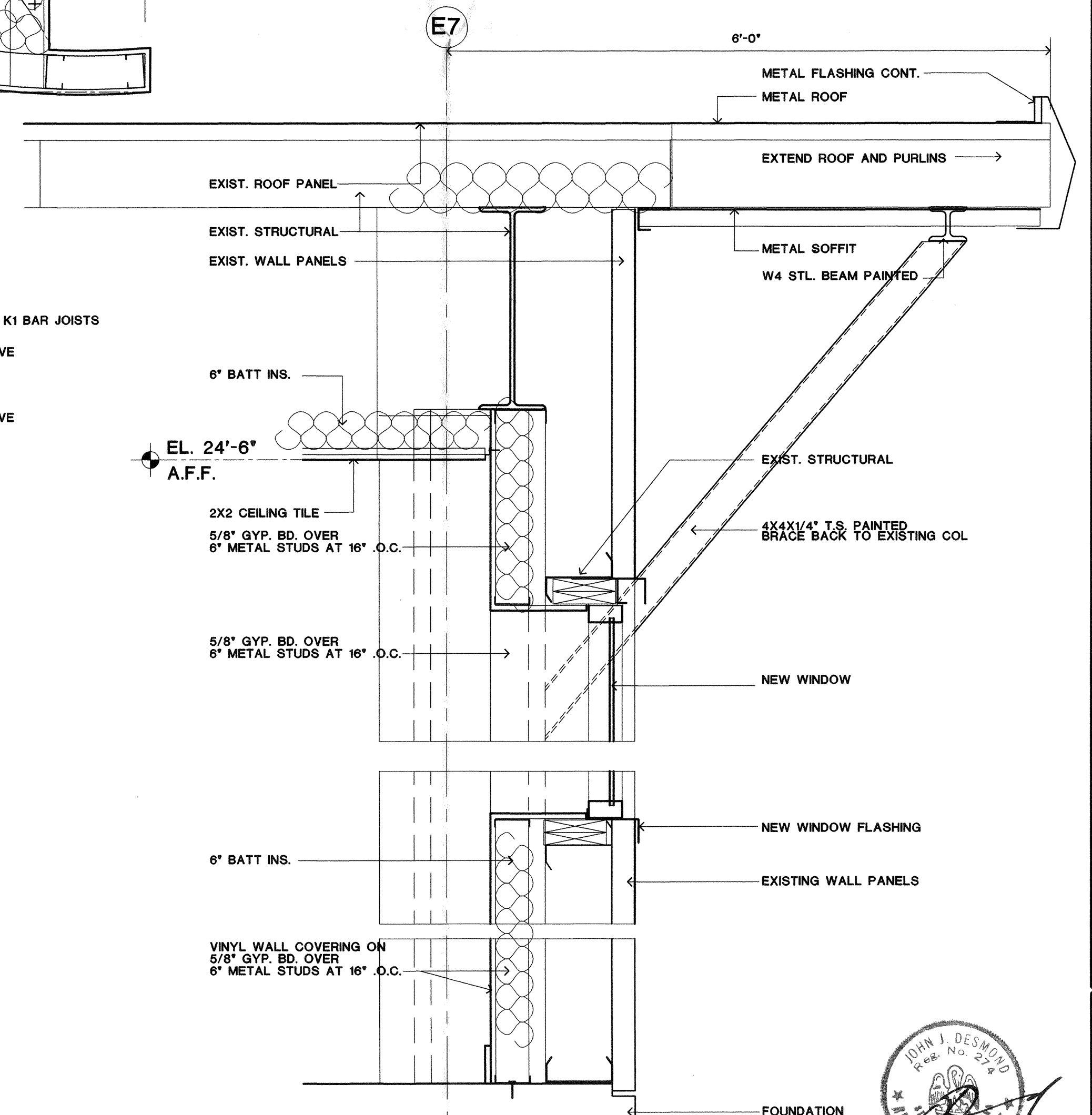
**8 DETAIL**  
1'-1'-0"

**9 DETAIL**  
1'-1'-0"

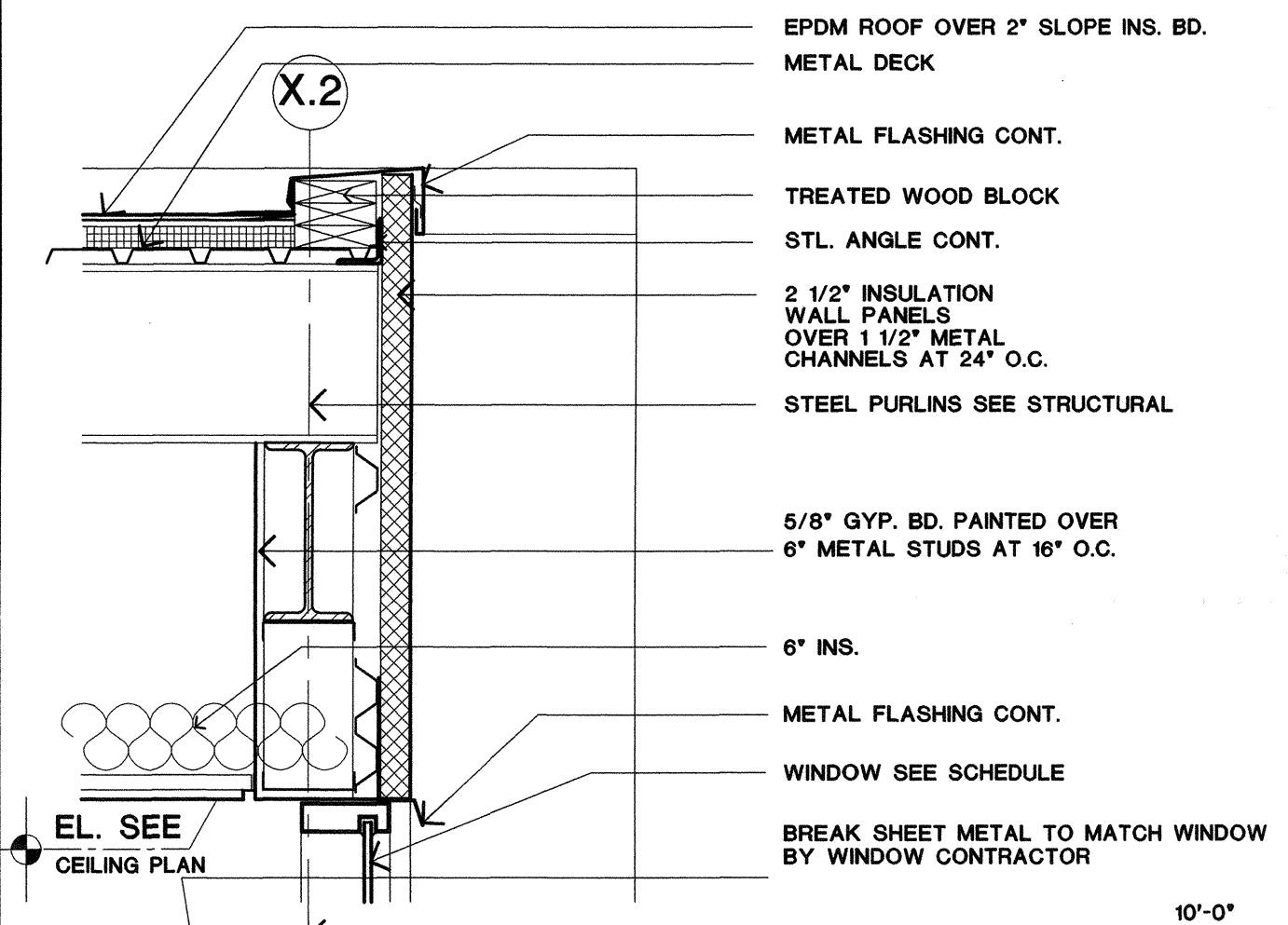
**4 DETAIL**  
1'-1'-0"



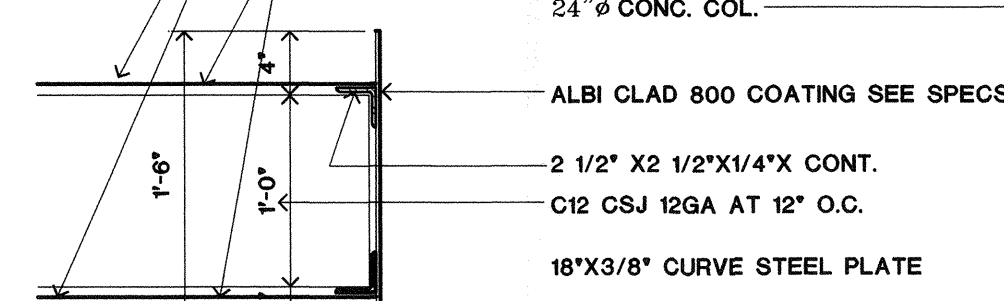
**10 DETAIL**  
3' - 1'-0"



**5 DETAIL-W.S.**  
1'-1'-0"



**1 DETAIL-W.S.**  
1'-1'-0"



**6 DETAIL**  
1'-1'-0"

**WALL SECTIONS - DETAILS** LIGO-D000281-00-L  
**ARCHITECTS/PLANNERS**  
 JOHN DESMOND & ASSOCIATES  
 703 LAUREL ST. BATON ROUGE, LA. 70802  
 MEMBER AMERICAN INSTITUTE OF ARCHITECTS  
 NEW STAGING BUILDING FOR  
**LIGO**  
 LIVINGSTON, LOUISIANA  
 DATE 9-11-2000  
 SHEET  
**A9**  
 OF

