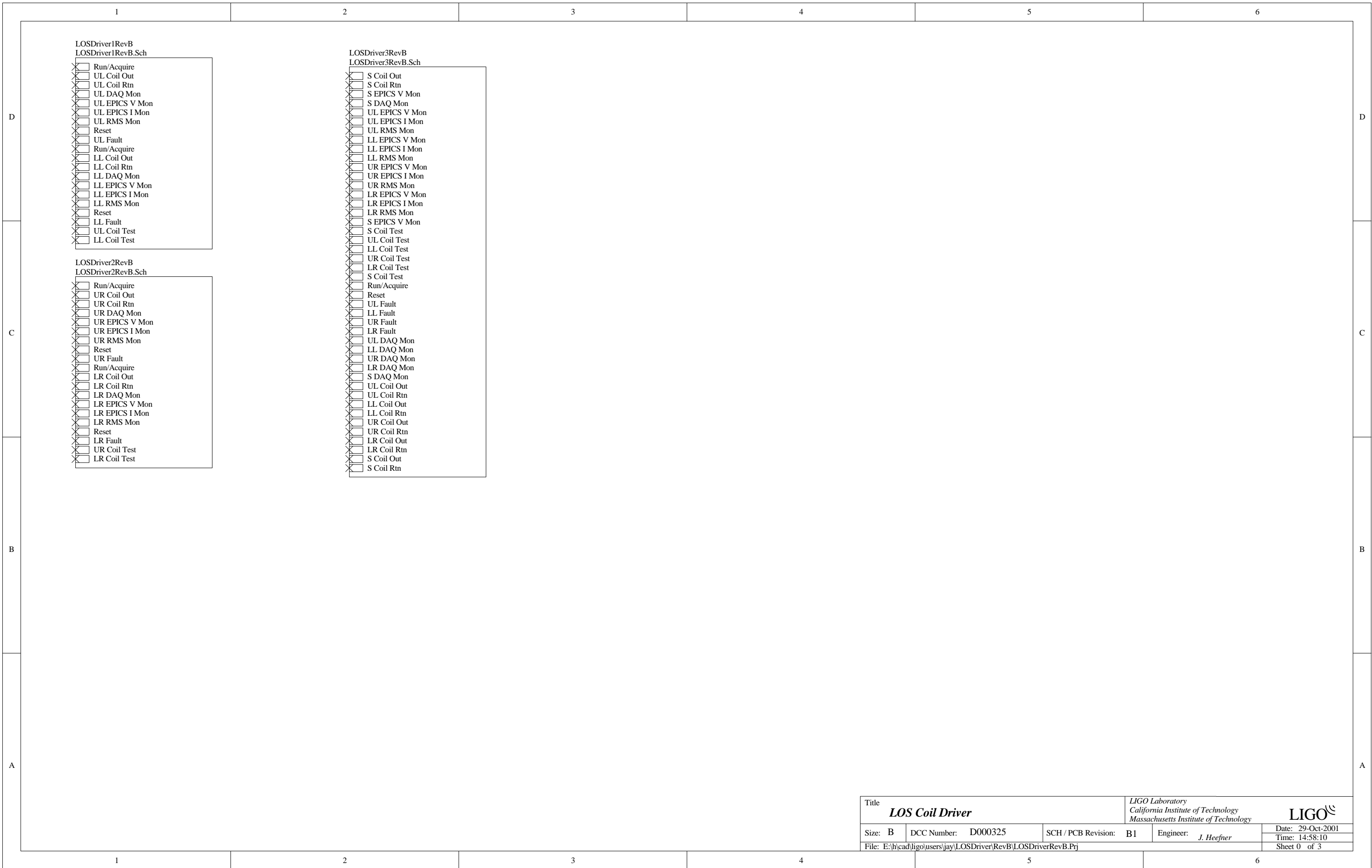


Rev	Description	Date
A	Initial Release	10/00
B	1. Changed connection of K5 to correct polarity for coil (Pins 1&6 reversed) 2. PCB traces rerouted for K5 and C64. 3. Hole sizes for PAR5s increased to allow sockets. 4. J12 rotated on PCB.	6/01
B1	Swapped pins 10 and 12 on relays K1, K2, K3, K4 and K5 to invert enable signal. Change was done by removing relays from board and adding an interface socket to make the switch.	10/01

Title: **LOS Coil Driver**
 LIGO Laboratory
 California Institute of Technology
 Massachusetts Institute of Technology
 LIGO

Size: D DCC Number: D000325 SCH / PCB Revision: B1 Engineer: J. Heffner Date: 2/4/03
 File: E:\hcal\lucasson\l_losdriver\revB1\l_losdriver\revB.Sch Time: 14:55:39
 Sheet 3 of 3



Title LOS Coil Driver			LIGO Laboratory California Institute of Technology Massachusetts Institute of Technology		LIGO
Size: B	DCC Number: D000325	SCH / PCB Revision: B1	Engineer: J. Heefner	Date: 29-Oct-2001	
File: E:\head\ligo\users\jay\LOSDriver\RevB\LOSDriverRevB.Prj				Time: 14:58:10	Sheet 0 of 3