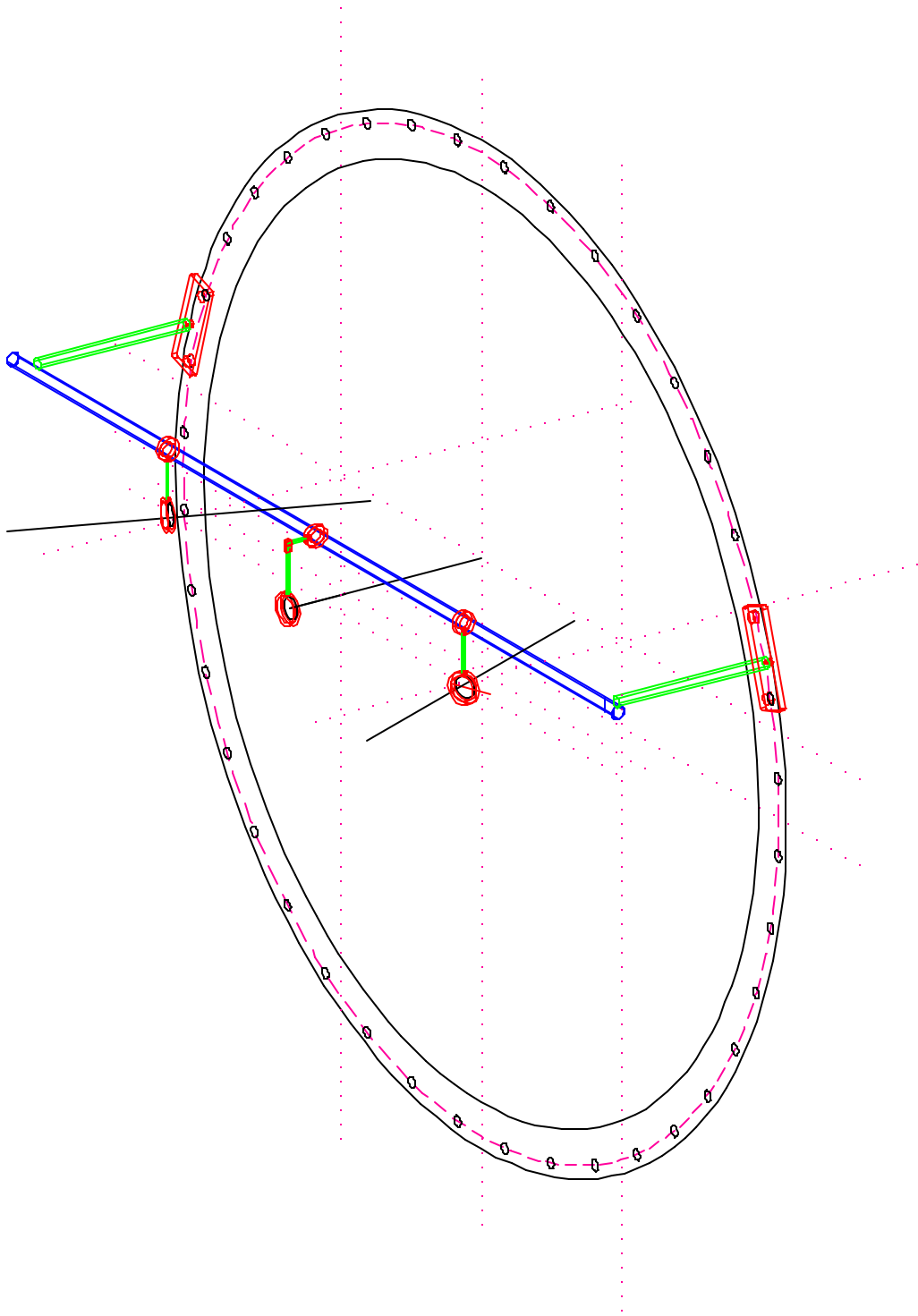
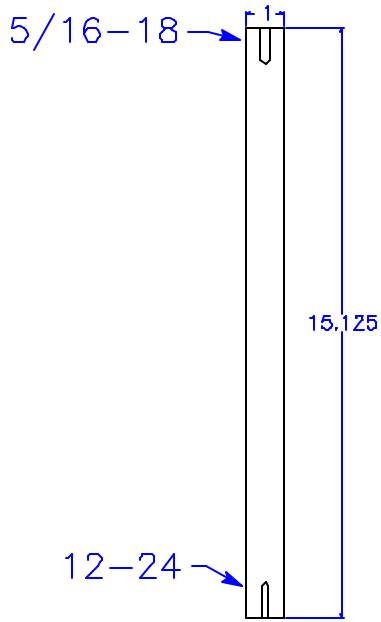


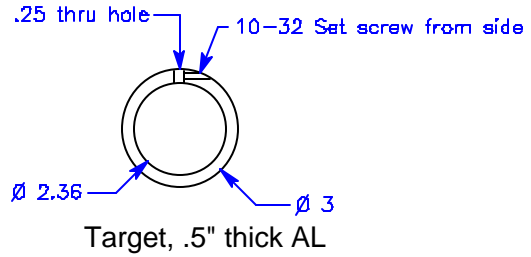
Material	Part Name Wireframe Target Fixture for HAMS	
Finish	Part Number D000328-00-D	
	Assembly	
	Date: 3/22/2000	



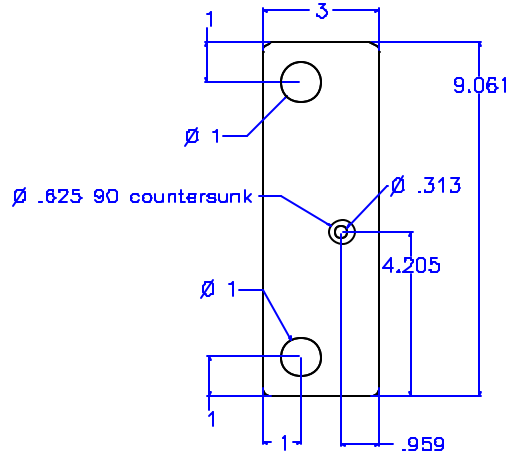
- 2 ea. Base Plate; .5" thick aluminum.
- 2 ea. Support Rod; 1" dia. aluminum rod.
- 1 ea. Cross Pole; 91.5" long, 1.25", .063 wall tubing.
- 3 ea. Target; 3" od, 2.36" id, .5 thick.
- 3ea. SS Rod; .25" dia. 4.5" long w/.250-20 one end.
- 1ea. SS Rod; .25" dia. 3" long w/.250-20 one end.
- 2 ea. Mop Clips; McMaster
- 1 ea. 90 Block; .5 x .5 x 1 w/ .25 hole & .250-20



Support Rod, 1" dia AL



Target, .5" thick AL



Base Plate, .5" AL

Material	Part Name	
Finish	Part Number	
	Assembly	
	Date	