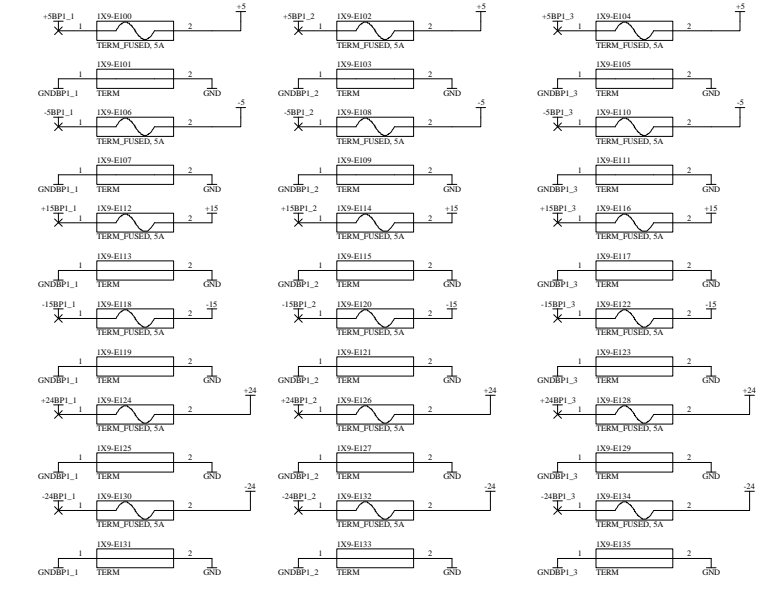
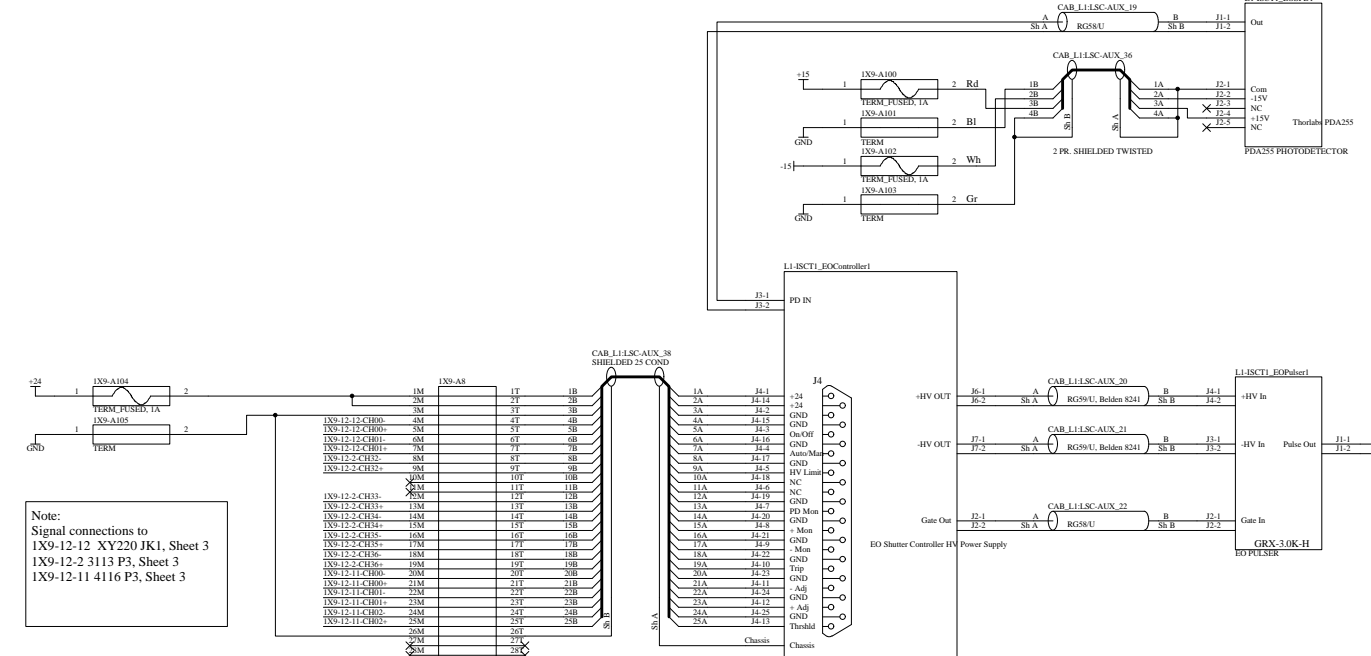
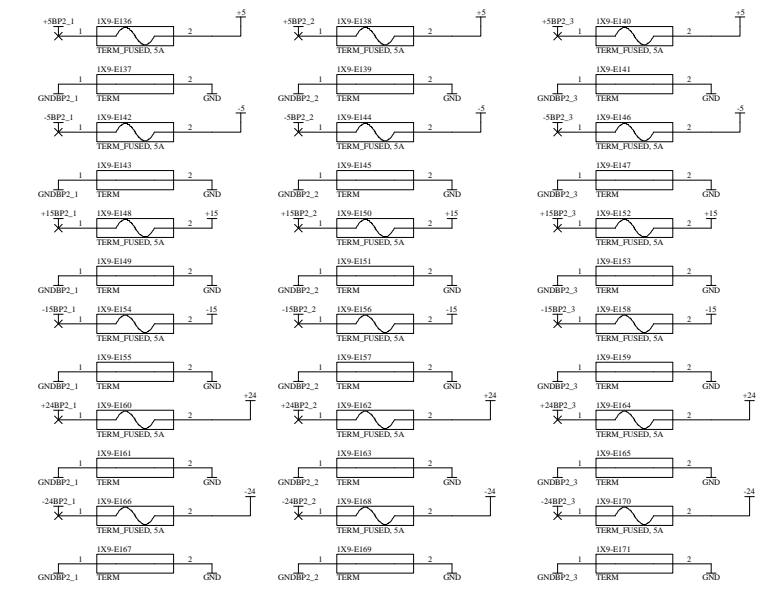


Note:
Power Connections for Eurocard modules are made through the backplane and are designated as XXBP1. Bulk power supply connections to the eurocard backplane lugs are designated as +XX.
Row E DIN Rail is mounted inside rack 1X9.

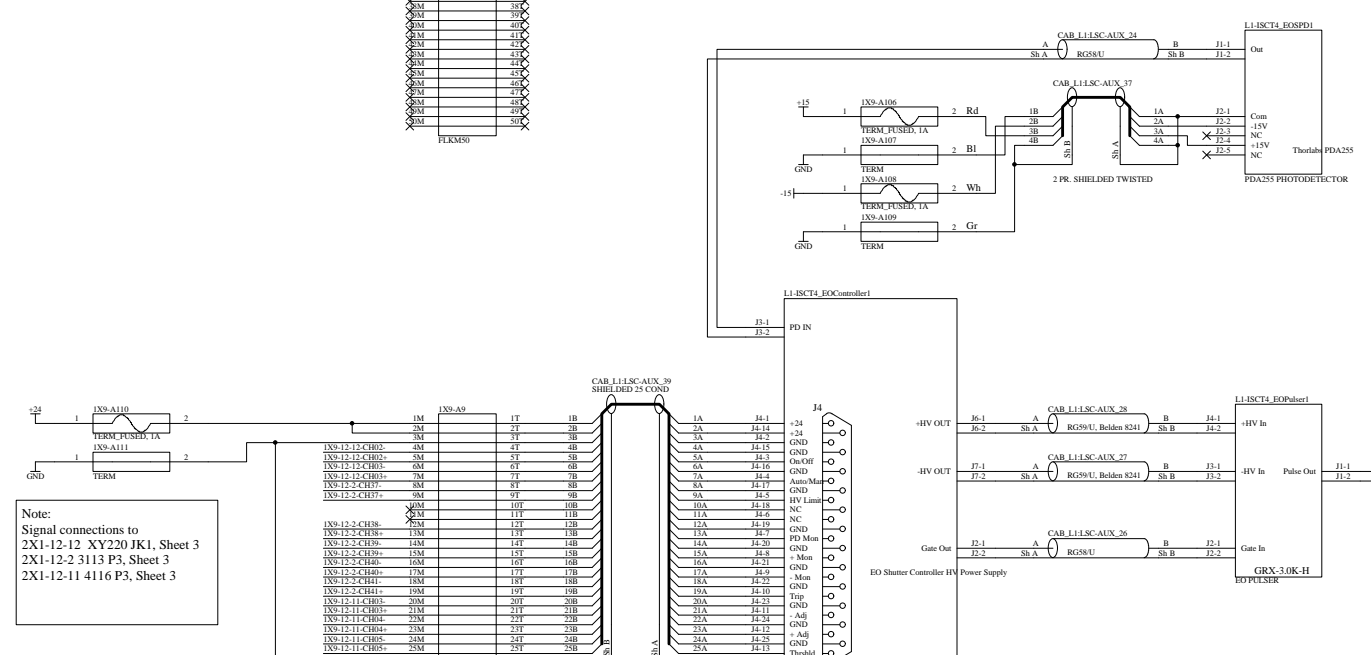
EuroCard Crate 1 Power Supply Connections



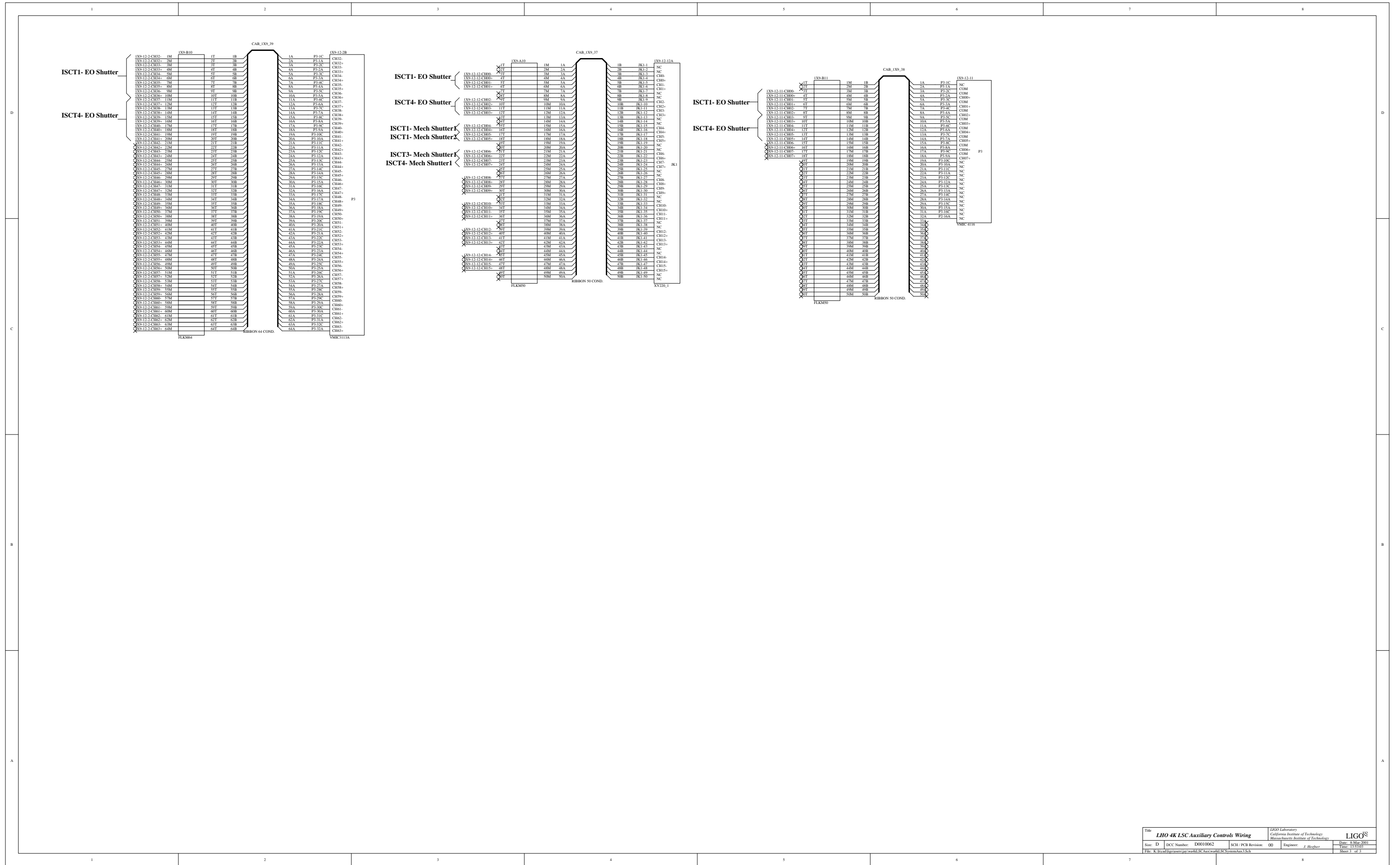
EuroCard Crate 2 Power Supply Connections



Note:
Signal connections to
1X9-12-12 XY220 JK1, Sheet 3
1X9-12-2 3113 P3, Sheet 3
1X9-12-11 4116 P3, Sheet 3



Note:
Signal connections to
2X1-12-12 XY220 JK1, Sheet 3
2X1-12-2 3113 P3, Sheet 3
2X1-12-11 4116 P3, Sheet 3



1

2

3

4

5

6

wa4kLSCSystemAux1
wa4kLSCSystemAux1.Sch



wa4kLSCSystemAux2
wa4kLSCSystemAux2.Sch



wa4kLSCSystemAux3
wa4kLSCSystemAux3.Sch



D

D

C

C

B

B

A

A

Title		<i>LIGO Laboratory</i> California Institute of Technology Massachusetts Institute of Technology			
Size: B	DCC Number: D010062	SCH / PCB Revision: 00	Engineer: J. Heefner	Date: 8-Mar-2001	Time: 13:52:43
File: K:\hcad\ligo\users\jay\wa4kLSCAux\wa4kLSCSystemAux.prj				Sheet 0 of 3	

1

2

3

4

5

6