

1

2

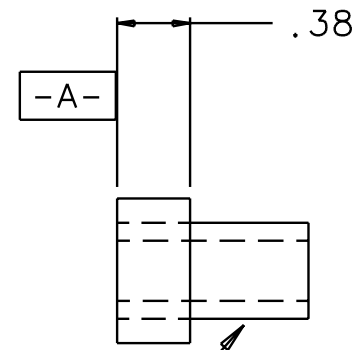
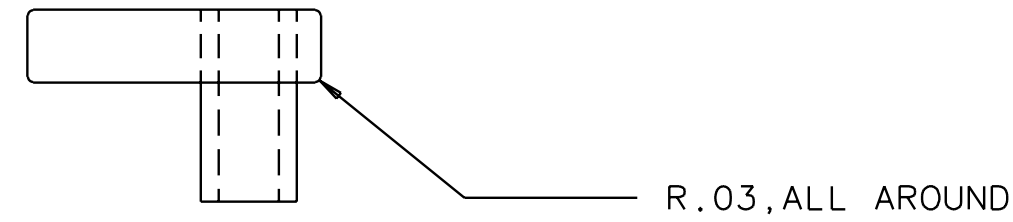
3

4

NOTES: (UNLESS OTHERWISE SPECIFIED)

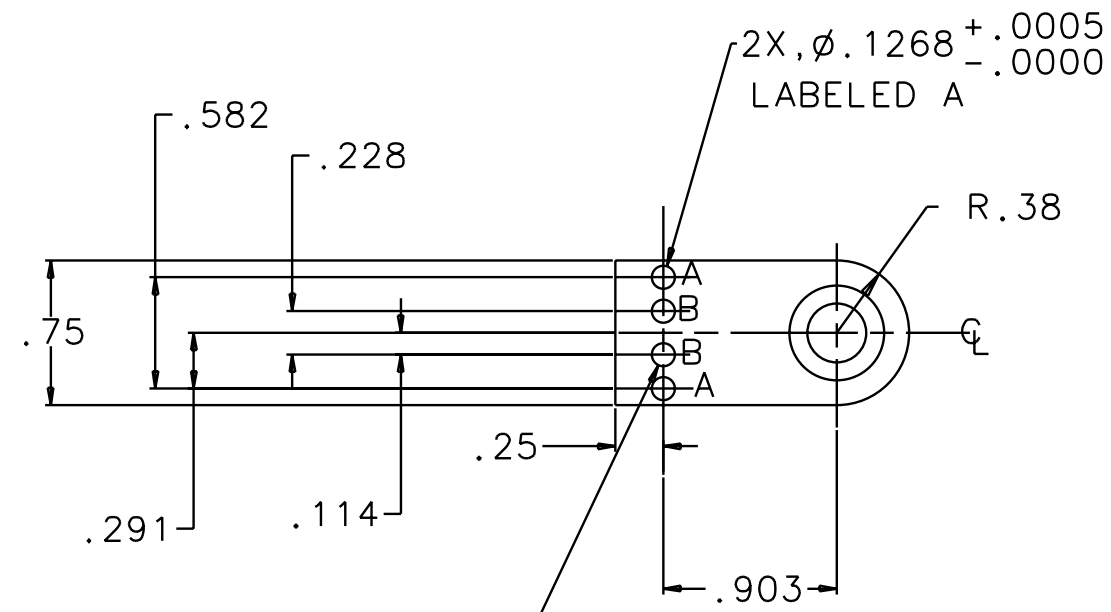
- 1. DIMENSIONS IN INCHES.
- 2. REMOVE ALL SHARP EDGES.
- 3. ENGRAVE OR ETCH PART WITH DRAWING NUMBER.

REV	DATE	DRAWN BY	CHECKED	DCC	DCN/DESCRIPTION
A	8-15-01	J.Romie			E010154/INITIAL RELEASE



6X, PRESS FIT PRECISION
 DRILL BUSHING
 5/16" ID, 1/2" OD, 1.00" LONG
 MATERIAL: BRASS OR 300 SST
 ID TOL. = +.0001/- .0005"

\perp	.001	A
---------	------	---



2X, ϕ .125, LABELED B

QTY REQD	FSCM NO	PART OR IDENTIFYING NO	NOMENCLATURE OR DESCRIPTION	MATERIAL SPECIFICATION	ITEM NO
PARTS LIST					
UNLESS OTHERWISE SPECIFIED DIMENSIONS ARE IN INCHES TOLERANCES ARE:			APPROVALS		DATE
FRACTIONS			DRAWN J. Romie		8/01
DECIMALS			CHECKED		
0.XX=±0.01					
0.XXX=±0.002					
ANGLES=±0.5°					
DO NOT SCALE DRAWING					
NEXT ASSEMBLY D010131		MATERIAL ALUM 6061-T6		FINISH NONE	
FILE LOCATION /home/dcc/docs/D010127.pdf				SCALE 1/1	
			TITLE LIGO CALIFORNIA INSTITUTE OF TECHNOLOGY MASSACHUSETTS INSTITUTE OF TECHNOLOGY		
			DWC NO. D010127-A-D		
			SHEET 1 OF 1		

1

2

3

4