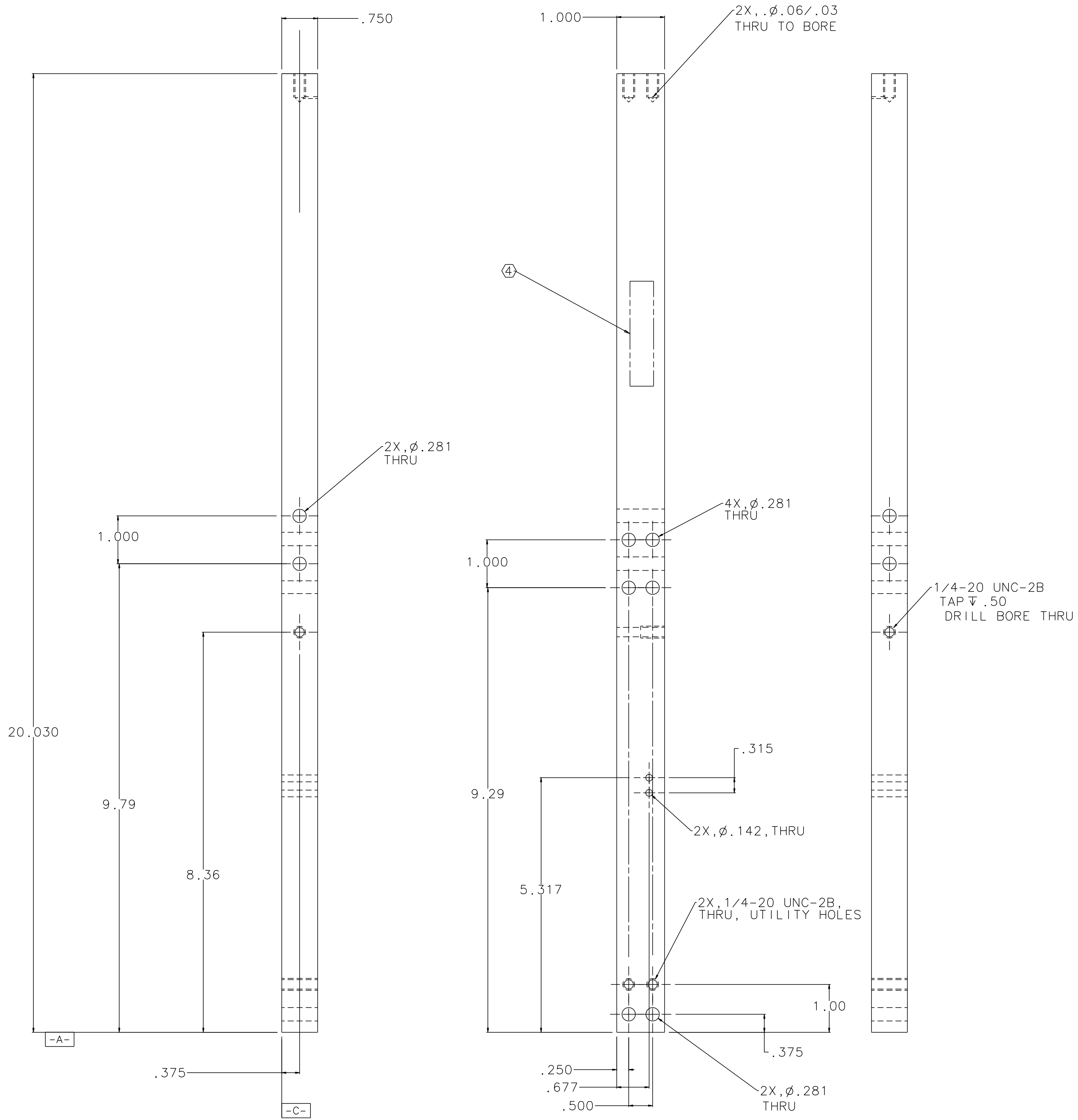
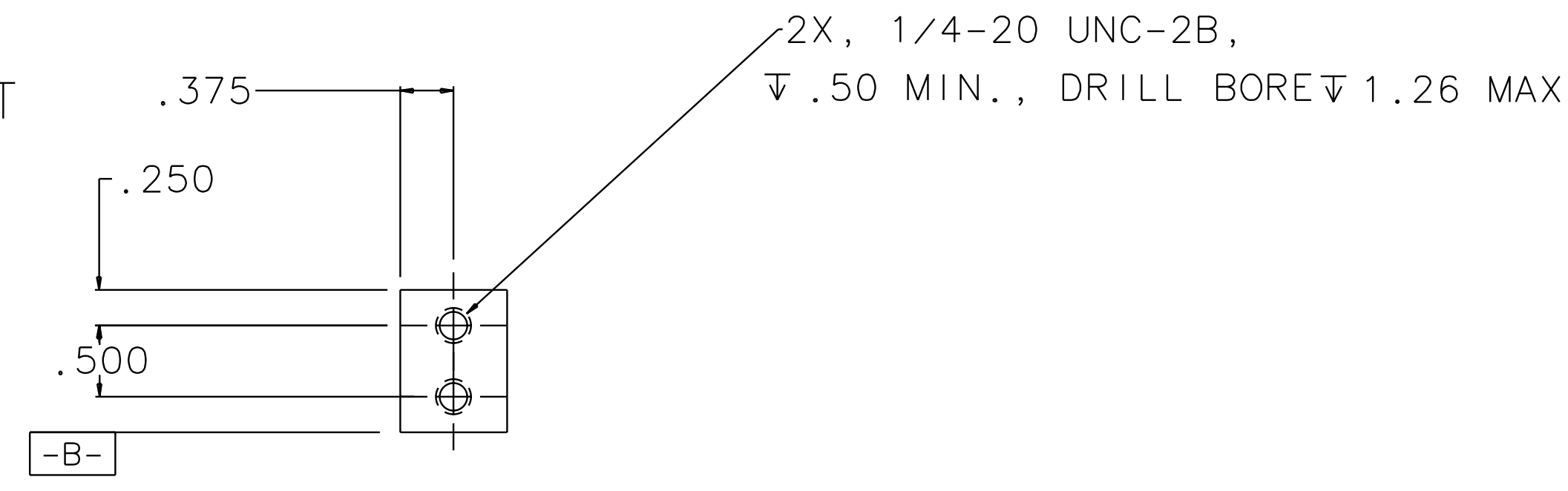


REV	DATE	DRAWN BY	CHECKED	DCC	DCN/DESCRIPTION
A	8/31/01	J. Romie			E010162/INITIAL RELEASE

NOTES: (UNLESS OTHERWISE SPECIFIED)
 1. DIMENSIONS IN INCHES.
 2. BREAK ALL SHARP EDGES.
 3. ALL MACHINING FLUIDS SHALL BE WATER SOLUABLE AND FREE OF SULFUR, CHLORINE AND SILICONE, SUCH AS CINCINNATI MILACRON'S CIMTECH 410 (STAINLESS STEEL.)
 4. ETCH OR STAMP THE DRAWING PART NUMBER ON NOTED SURFACE OF PART AND THEN A THREE DIGIT SERIAL NUMBER. SERIAL NUMBERS START AT 001 FOR THE FIRST PART AND PROCEED CONSEQUETIVELY. USE .07" HIGH CHARACTERS. EXAMPLE: D010164-A 001



QTY REQ	PART OR IDENTIFYING NO	NOMENCLATURE OR DESCRIPTION	MATERIAL SPECIFICATION	ITEM NO.
		40m TM LEG, FRONT	ALUM 6061-T6	

UNLESS OTHERWISE SPECIFIED DIMENSIONS ARE IN INCHES TOLERANCES ARE: FRACTIONS DECIMALS ANGLES 0.XX ±0.01 0.XXX ±0.005 ANGLES ±0.5°	APPROVALS	DATE	LIGO CALIFORNIA INSTITUTE OF TECHNOLOGY MASSACHUSETTS INSTITUTE OF TECHNOLOGY	
DO NOT SCALE DRAWING	DRAWN J. ROMIE	8/01	TITLE	
	CHECKED		SIZE	REV
			E	A
			SCALE 1/1	SHEET 1 OF 1

NEXT ASSEMBLY D010163
 FILE LOCATION /home/dcc/docs/D010166.pdf