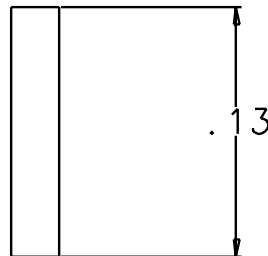
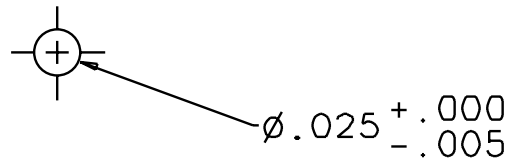


REV	DATE	DRAWN BY	CHECKED	DCC	DCN/DESCRIPTION
A	8/31/01	J. ROMIE			E010162/INITIAL RELEASE

NOTES: (UNLESS OTHERWISE SPECIFIED)

1. DIMENSIONS IN INCHES.
2. MATERIAL: ALUMINUM 6061-T6.
3. BREAK ALL SHARP EDGES.
4. ALL MACHINING FLUIDS SHALL BE WATER SOLUABLE AND FREE OF SULFUR, CHLORINE AND SILICONE, SUCH AS CINCINNATI MILACRON'S CIMTECH 410 (STAINLESS STEEL.)



QTY REQD	FSCM NO	PART OR IDENTIFYING NO	NOMENCLATURE OR DESCRIPTION	MATERIAL SPECIFICATION	ITEM NO
<b>PARTS LIST</b>					
UNLESS OTHERWISE SPECIFIED DIMENSIONS ARE IN In (mm) TOLERANCES ARE: FRACTIONS DECIMALS 0.XX=±0.01 0.XXX=±0.005 ANGLES=±0.5° DO NOT SCALE DRAWING		<b>APPROVALS</b> DRAWN J. ROMIE GROUP CHECKED DATE B/D1		<b>LIGO CALIFORNIA INSTITUTE OF TECHNOLOGY</b> <b>MASSACHUSETTS INSTITUTE OF TECHNOLOGY</b> TITLE 40M TM GUIDE ROD	
MATERIAL		SIZE A		DWC NO. D010185	
FINISH		SCALE 10/1		REV A	
FILENAME /home/dcc/docs/D010185.pdf		SHEET 1 OF 1			