

LASER INTERFEROMETER GRAVITATIONAL WAVE OBSERVATORY

- LIGO -

CALIFORNIA INSTITUTE OF TECHNOLOGY
MASSACHUSETTS INSTITUTE OF TECHNOLOGY

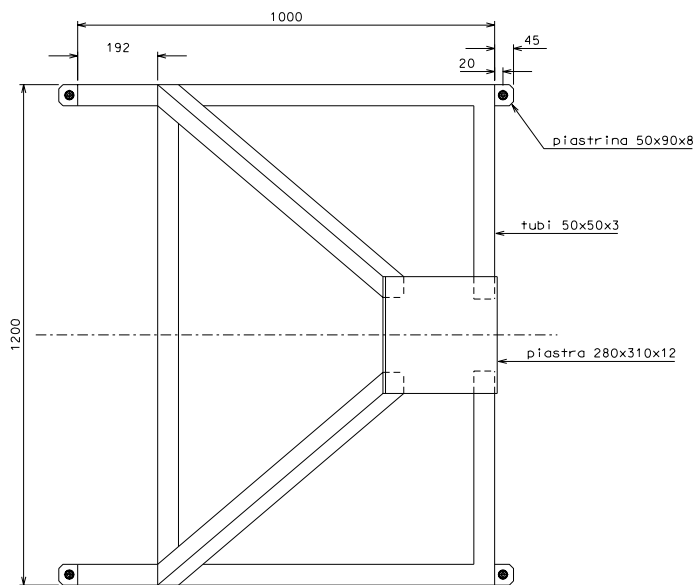
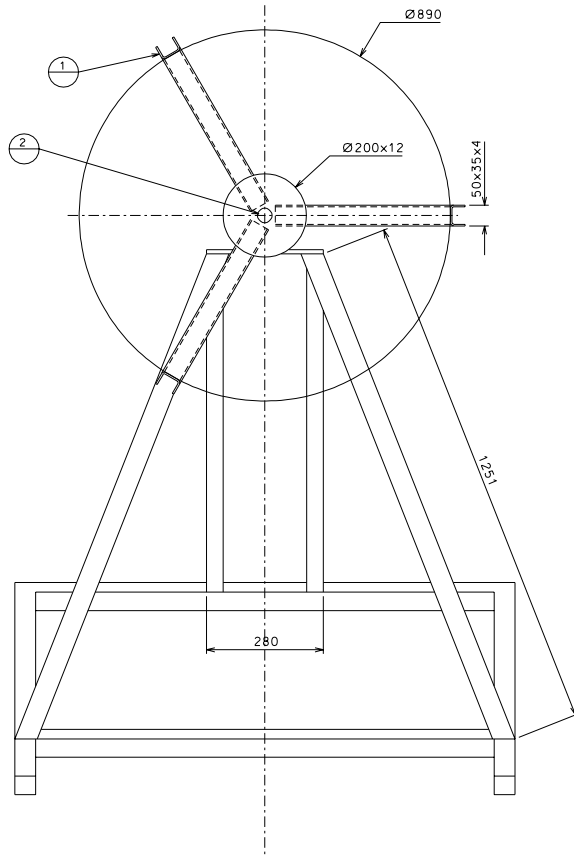
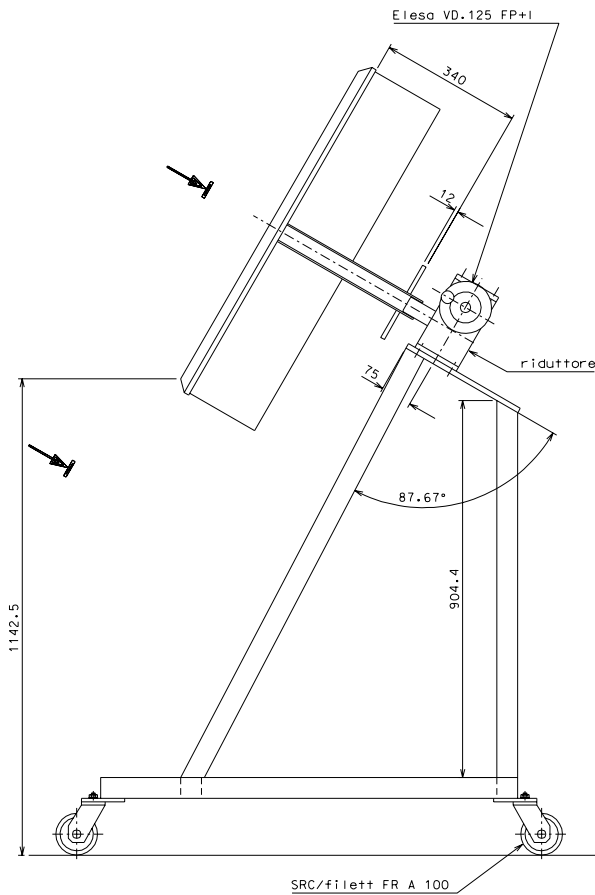
Document Type Technical Note	DCC Number LIGO-D-010245-00-R	Date 30 th October 2001
LIGO-II Seismic Attenuation System (SAS) test tower Assembly tool Mechanical drawings (Betoniera Filter assembler tool)		
Gianni Gennaro, Tatiana Zelenova (PROMEC), Riccardo DeSalvo (LIGO)		

Distribution of this draft: TBD
This is an internal working note
of the LIGO Project.

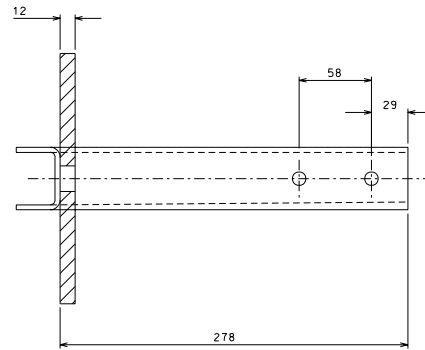
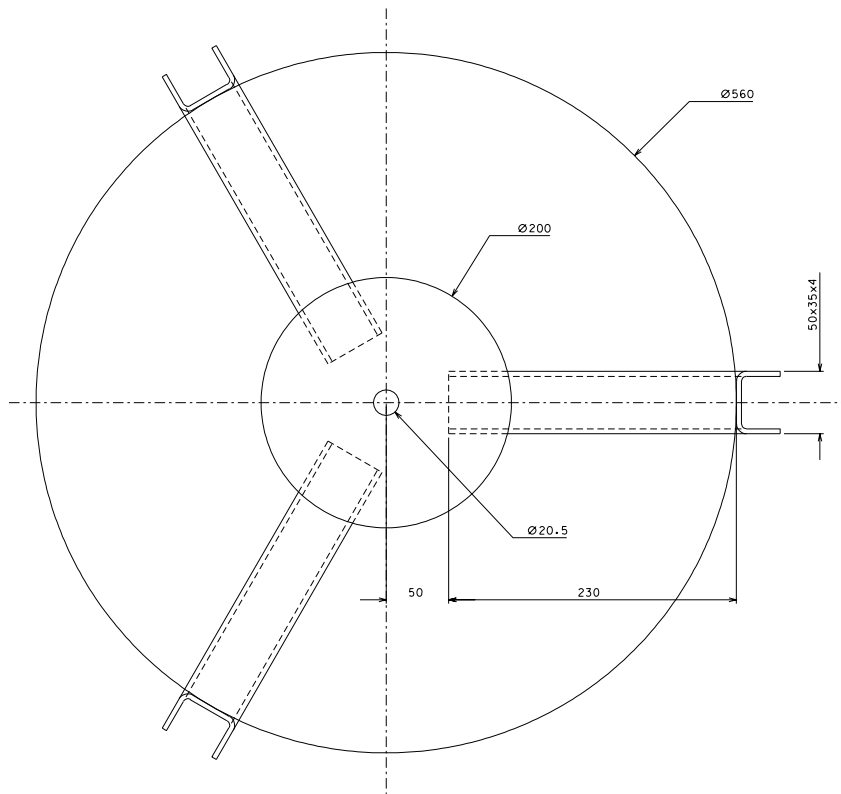
California Institute of Technology
LIGO Laboratory - MS 18-34
Pasadena CA 91125
Phone (626) 395-212
Fax (626) 304-9834
E-mail: info@ligo.caltech.edu

Massachusetts Institute of Technology
LIGO Laboratory - MS 16NW-145
Cambridge, MA 01239
Phone (617) 253-4824
Fax (617) 253-7014
E-mail: info@ligo.mit.edu

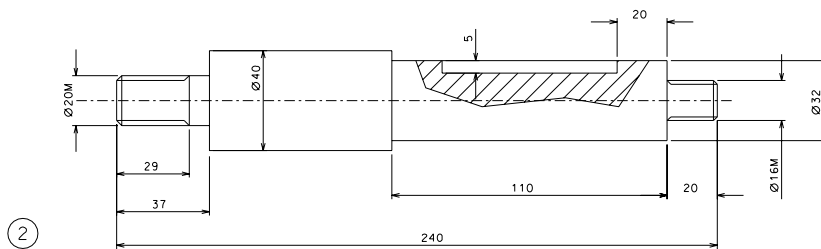
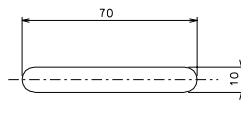
www: <http://www.ligo.caltech.edu/>



2	001				
1	001				
ref.	draw.	added	removed	ref.	draw.
			designed for R. De Salvo ass. num. Beton.000		
title BETON			draw. PRGMEC 20-1-99 scale 1:16 no./issue of. num.		



1



2

2	1	acciaio	1:1				
1	1	acciaio	1:2				
ref.	piece	mat. and treatments	scale	ref.	piece	mat. and treatments	scale

General machining tolerances UNI 5007-63							
Dimensions	< 4	4-30	30-100	100-315	315-1000	1000-5000	> 5000
Linear Toli.	± 0.1	± 0.2	± 0.3	± 0.5	± 0.8	± 1.2	± 2
Angular Toli.	± 1'	± 30"	± 20"	± 10"	related to the shortest side		
LIGO PROJECT designed for R. De Salvo n. Betonc.001				n. PROMEC 20-1-99 details from 000 revisions or. Num.			
title BETON DETTAGLI							