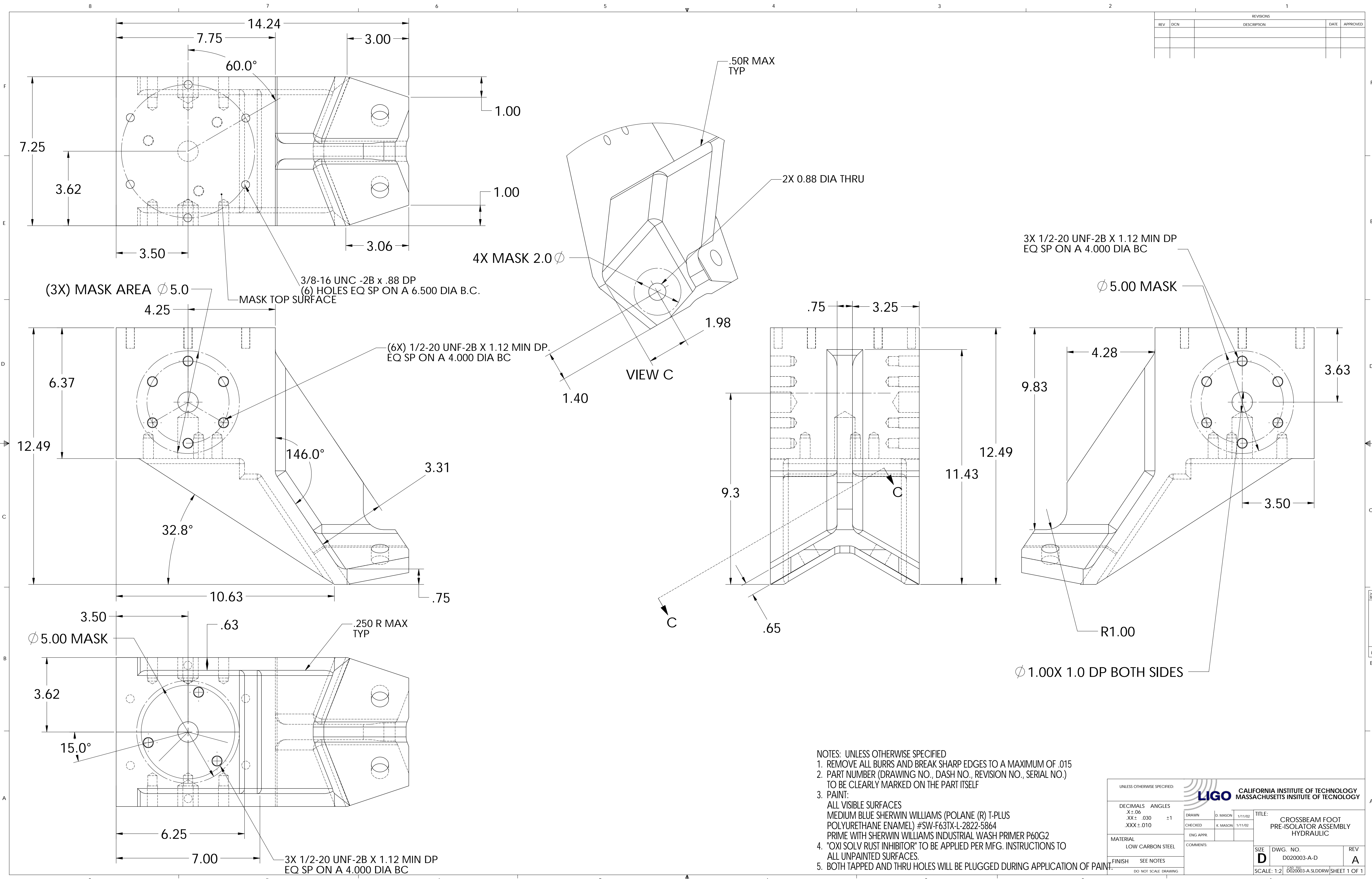


REVISIONS				
REV	DCN	DESCRIPTION	DATE	APPROVED



- NOTES: UNLESS OTHERWISE SPECIFIED
1. REMOVE ALL BURRS AND BREAK SHARP EDGES TO A MAXIMUM OF .015
  2. PART NUMBER (DRAWING NO., DASH NO., REVISION NO., SERIAL NO.) TO BE CLEARLY MARKED ON THE PART ITSELF
  3. PAINT:  
ALL VISIBLE SURFACES  
MEDIUM BLUE SHERWIN WILLIAMS (POLANE (R) T-PLUS  
POLYURETHANE ENAMEL) #SW-F63TX-L-2822-5864  
PRIME WITH SHERWIN WILLIAMS INDUSTRIAL WASH PRIMER P60G2
  4. "OXI SOLV RUST INHIBITOR" TO BE APPLIED PER MFG. INSTRUCTIONS TO ALL UNPAINTED SURFACES.
  5. BOTH TAPPED AND THRU HOLES WILL BE PLUGGED DURING APPLICATION OF PAINT.

UNLESS OTHERWISE SPECIFIED:		DRAWN		CHECKED		ENG APPR		COMMENTS	
DECIMALS	ANGLES	D. MASON	1/11/02	K. MASON	1/11/02				
X ± .06		TITLE: CROSSBEAM FOOT PRE-ISOLATOR ASSEMBLY HYDRAULIC							
.XX ± .030	±1	MATERIAL: LOW CARBON STEEL							
.XXX ± .010		FINISH: SEE NOTES							
DO NOT SCALE DRAWING		SCALE: 1:2		DWG. NO. D020003-A-D		REV A		SIZE D	

SCALE: 1:2  
D020003-A-SLDDRW/SHEET 1 OF 1