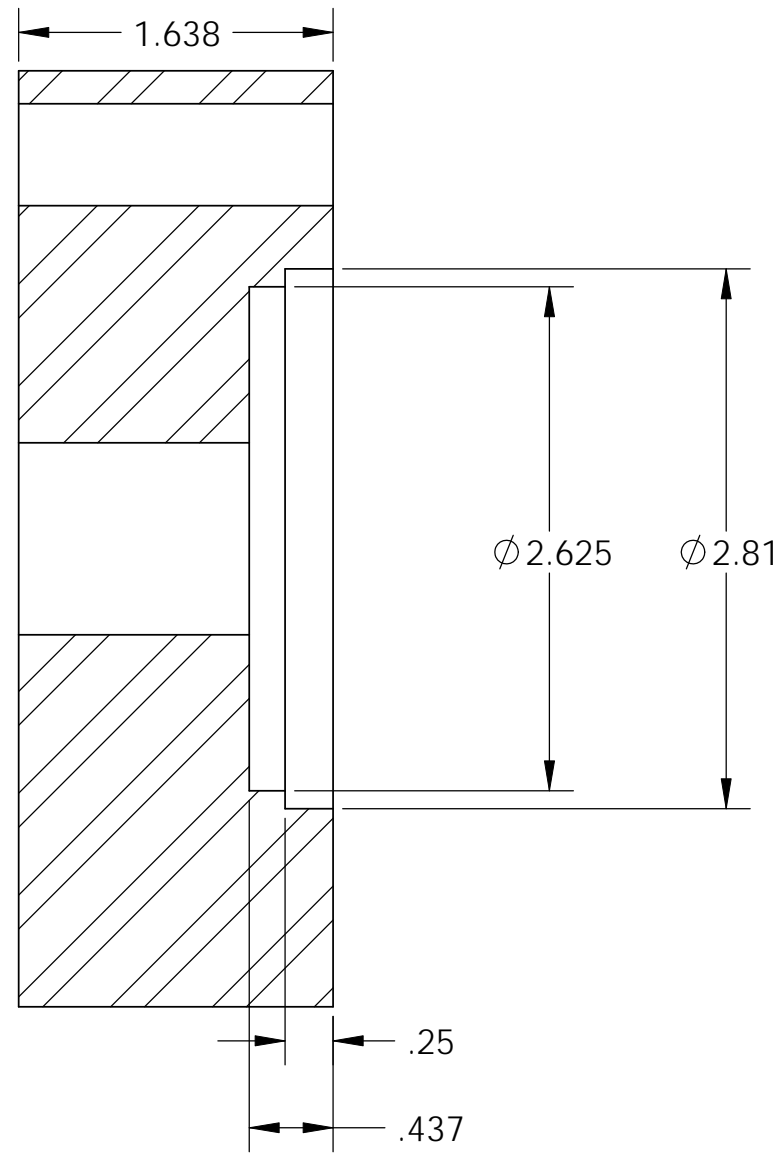


8 7 6 5 4 3 2 1

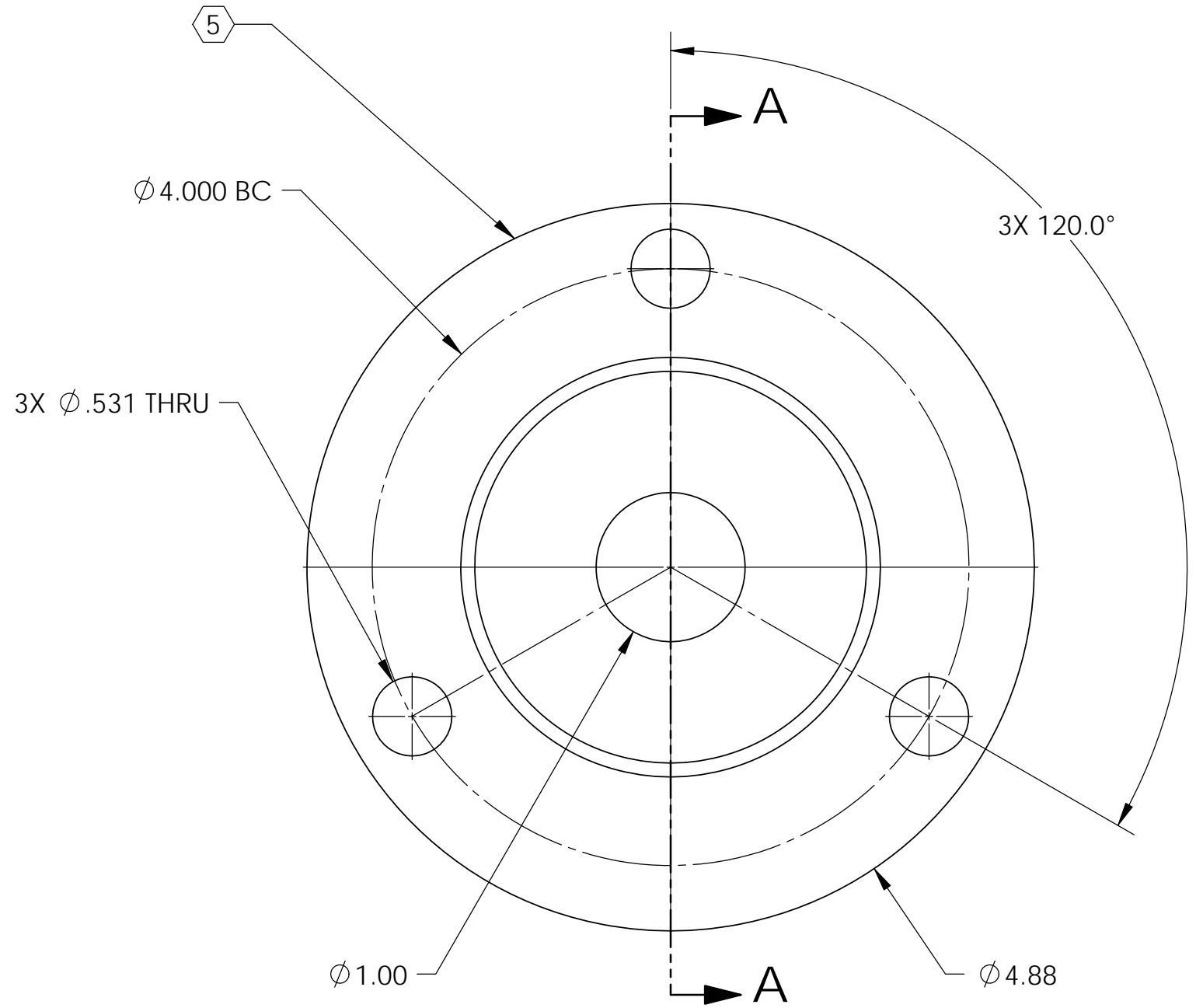
REV.	DATE	DCN #	DRAWING TREE #
v1	17 Apr. 2011	E1100015	E1100016

NOTES CONTINUED:

- 4. ALL MACHINING FLUIDS MUST BE FULLY SYNTHETIC, FULLY WATER SOLUBLE AND FREE OF SULFUR, SILICONE AND CHLORINE.
- 5. SCRIBE, ENGRAVE, OR MECHANICALLY STAMP (NO INKS OR DYES) DRAWING PART NUMBER, REVISION (AND VARIANT OR "TYPE" IF APPLICABLE) ON NOTED SURFACE OF PART FOLLOWED ON THE NEXT LINE WITH A THREE DIGIT SERIAL NUMBER. SERIAL NUMBERS START AT 001 FOR THE FIRST ARTICLE AND PROCEED CONSECUTIVELY. USE MINIMUM 0.12 HIGH CHARACTERS, UNLESS THE SIZE OF THE PART DICTATES SMALLER CHARACTERS. A VIBRATORY TOOL MAY BE USED. EXAMPLE DXXXXXXX-VY, TYPE-XX, S/N XXX.
- 6. APPROXIMATE WEIGHT = 7.41179405 LB.
- 7. ALL PARTS SHALL BE MANUFACTURED IN ACCORDANCE WITH LIGO SPECIFICATION E0900364.



SECTION A-A



D020011, PART PDM REV: X-005, DRAWING PDM REV: X-001

8 7 6 5 4 3 2 1

NOTES AND TOLERANCES: (UNLESS OTHERWISE SPECIFIED)				LIGO CALIFORNIA INSTITUTE OF TECHNOLOGY MASSACHUSETTS INSTITUTE OF TECHNOLOGY		PART NAME	
DIMENSIONS ARE IN INCHES		1. INTERPRET DRAWING PER ASME Y14.5-1994.		ADVANCED LIGO		Spherical Washer Housing	
TOLERANCES: .XX ± .015 .XXX ± .005		2. REMOVE ALL SHARP EDGES, .03 x 45°.		SUB-SYSTEM SEI		DESIGNER	M.HAMMOND 18 Oct. 2003
ANGULAR ± .5°		3. DO NOT SCALE FROM DRAWING.		NEXT ASSY D1100241 D1100242		DRAFTER	M.HILLARD 17 Apr. 2011
MATERIAL AISI 1018 Steel Cold Rolled		FINISH 63 μinch		SCALE: 1:1		CHECKER	M.HAMMOND 19 Oct. 2003
				PROJECTION:		APPROVAL	K.MASON 17 Apr. 2011
				SIZE DWG. NO.		REV.	
				B D020011		v1	
				SHEET 1 OF 1			