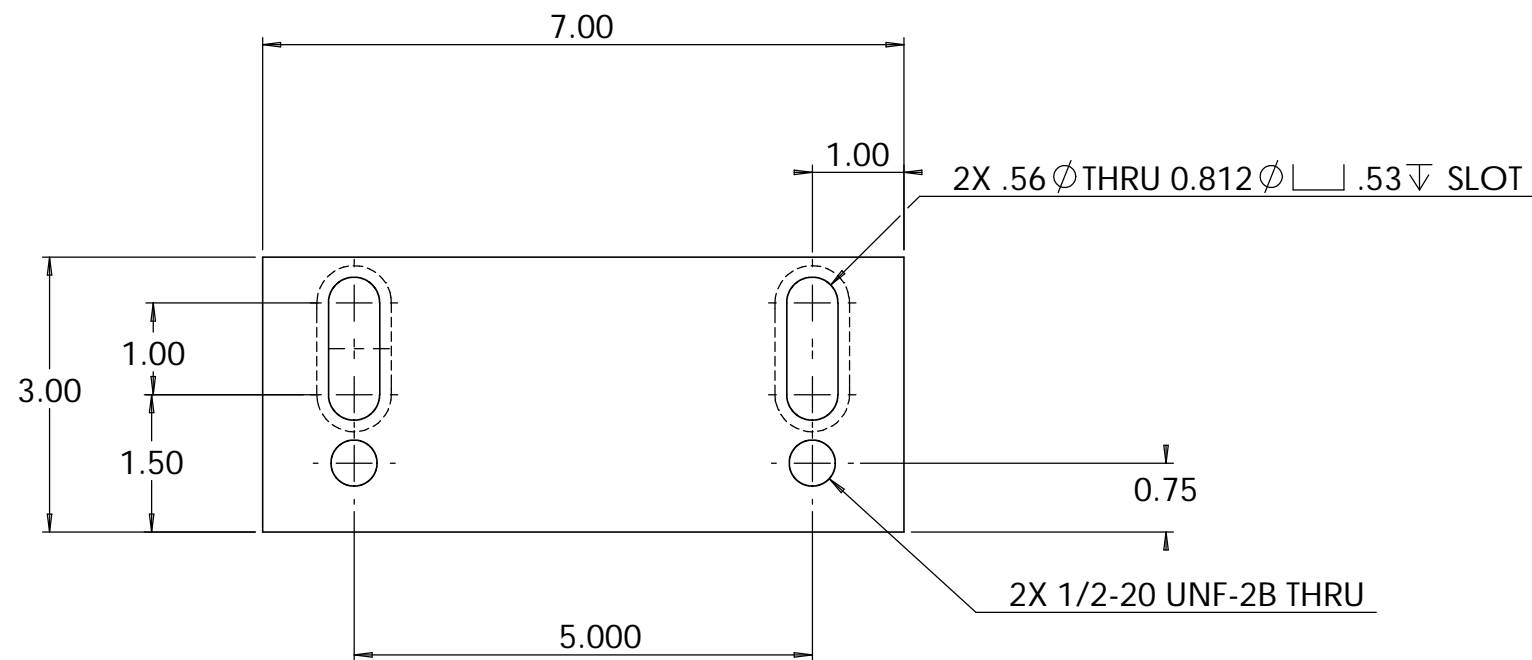
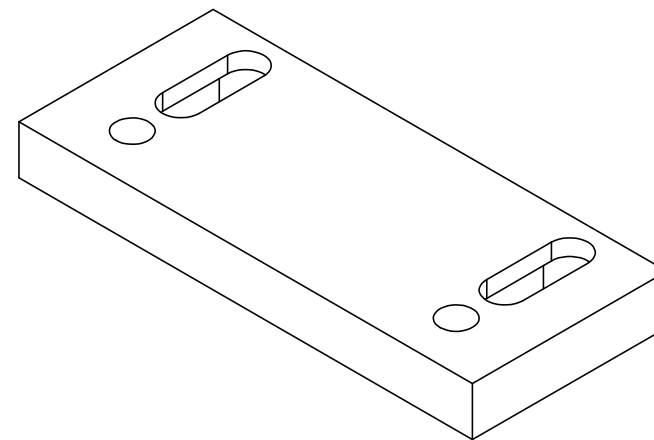
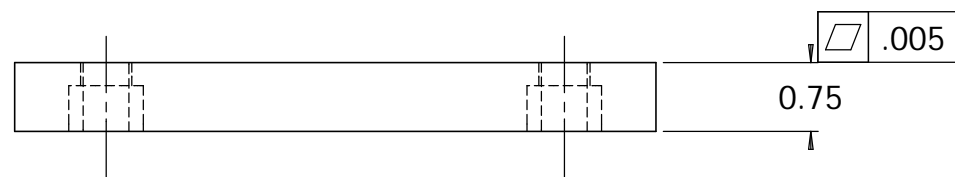


NOTES: UNLESS OTHERWISE SPECIFIED

1. REMOVE ALL BURRS AND BREAK SHARP EDGES TO A MAXIMUM OF .015
2. PART NUMBER (DRAWING NO., DASH NO., REVISION NO., SERIAL NO.) TO BE CLEARLY MARKED ON THE PART ITSELF
3. PAINT:
ALL VISIBLE SURFACES
MEDIUM BLUE SHERWIN WILLIAMS (POLANE (R) T-PLUS POLYURETHANE ENAMEL) #SW-F63TX-L-2822-5864
PRIME WITH SHERWIN WILLIAMS INDUSTRIAL WASH PRIMER P60G2
4. "OXI SOLV RUST INHIBITOR" TO BE APPLIED PER MFG. INSTRUCTIONS TO ALL UNPAINTED SURFACES.
BOTH TAPPED AND THRU HOLES WILL BE PLUGGED DURING APPLICATION.

REVISIONS			
REV.	DESCRIPTION	DATE	APPROVED



SolidWorks Educational License
Instructional Use Only

UNLESS OTHERWISE SPECIFIED DIMENSIONS ARE IN INCHES TOLERANCES ARE: DECIMALS ANGLES .X \pm .06 .XX \pm .01 \pm 1 .XXX \pm .005	CAD GENERATED DRAWING, DO NOT MANUALLY UPDATE		CALIFORNIA INSTITUTE OF TECHNOLOGY MASSACHUSETTS INSTITUTE OF TECHNOLOGY	
	APPROVALS DRAWN D. MASON	DATE 1/9/02		LOWER VERTICAL ACTUATOR MOUNT HYDRAULIC ISOLATOR
	CHECKED K. MASON	1/9/02		
	MATERIAL 1018 CRS	RESP ENG		
FINISH SEE NOTES	MFG ENG	SIZE B	DWG. NO. D020013-A-D	
DO NOT SCALE DRAWING	QUAL ENG	SCALE 1:2	CAD FILE: D020013-A.SLDDRW	SHEET 1 OF 1