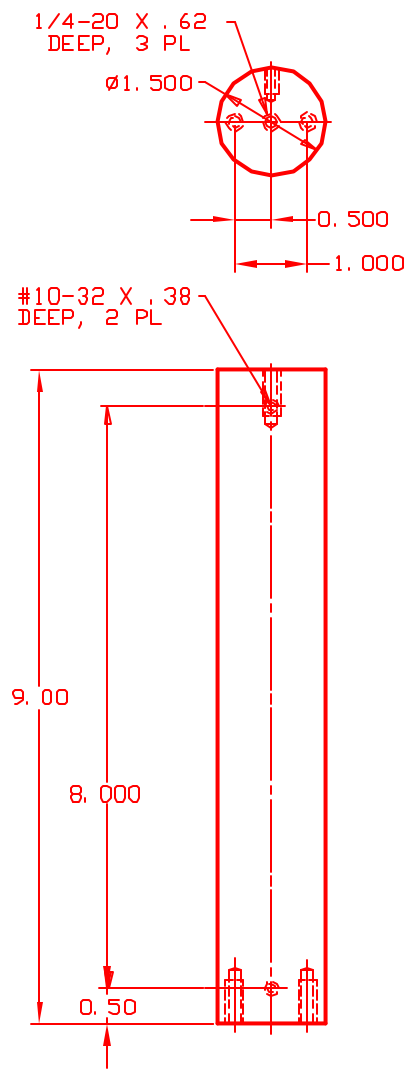


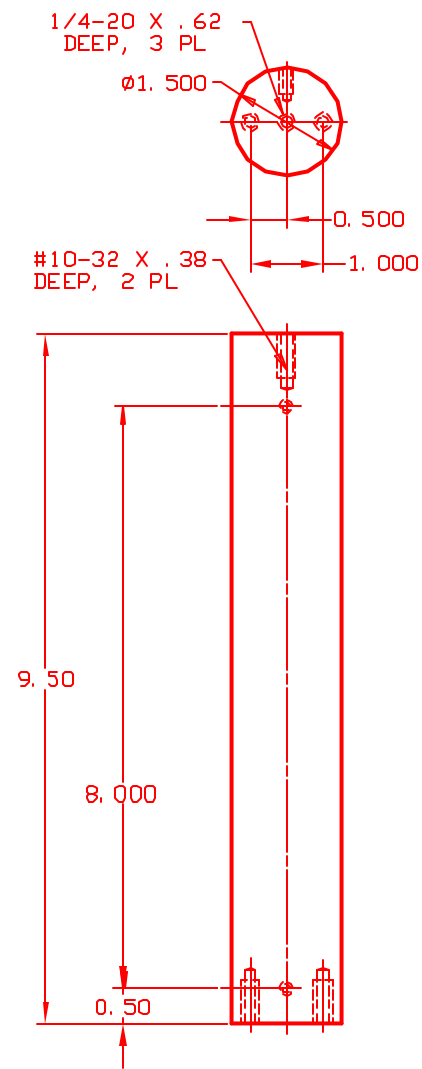
-1 CORNER POST

MATERIAL: 6061-T6 ALUMINUM
29 REQ'D



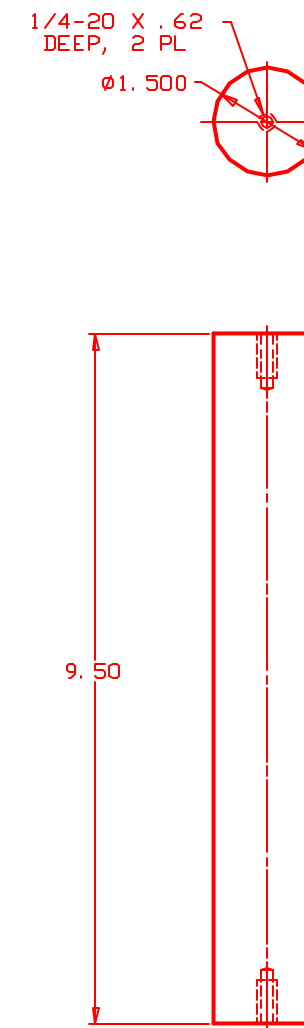
-2 WALL POST "A"

MATERIAL: 6061-T6 ALUMINUM
21 REQ'D



-3 WALL POST "B"

MATERIAL: 6061-T6 ALUMINUM
19 REQ'D



-4 CENTRAL POST

MATERIAL: 6061-T6 ALUMINUM
17 REQ'D

- NOTES:
1. REMOVE ALL SHARP EDGES
2. ETCH FOR MATTE FINISH
3. ANODIZE DYE BLACK

ALL DIMENSIONS ARE IN INCHES
TOLERANCES: X, XX: +/- 0.03"
X, XI: +/- 0.1"

D020085-00-R
POSTS, TABLE COVER
40M LABORATORY
LIGO PROJECT
L JONES

2/14/02