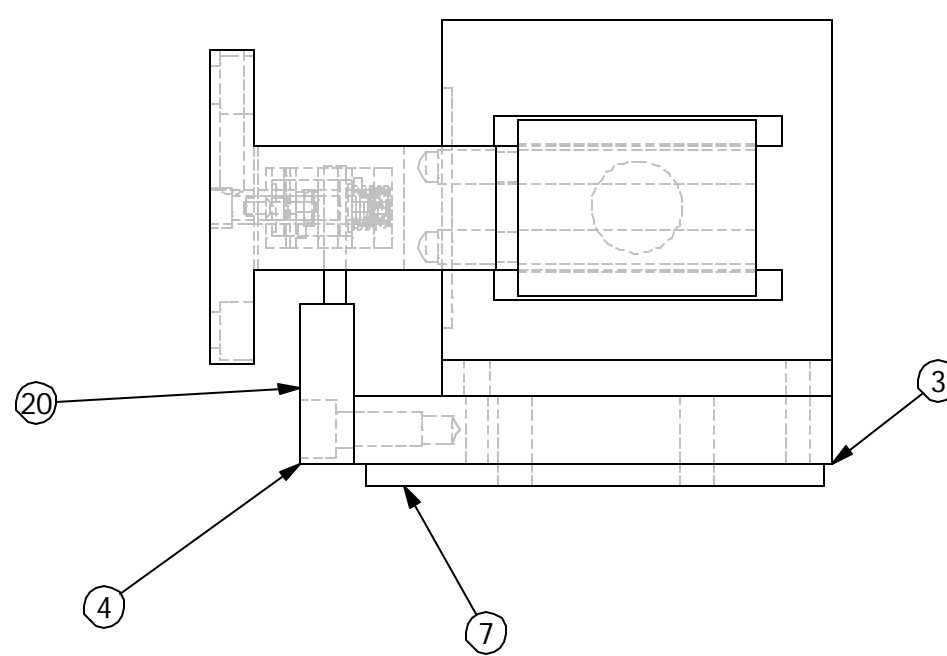
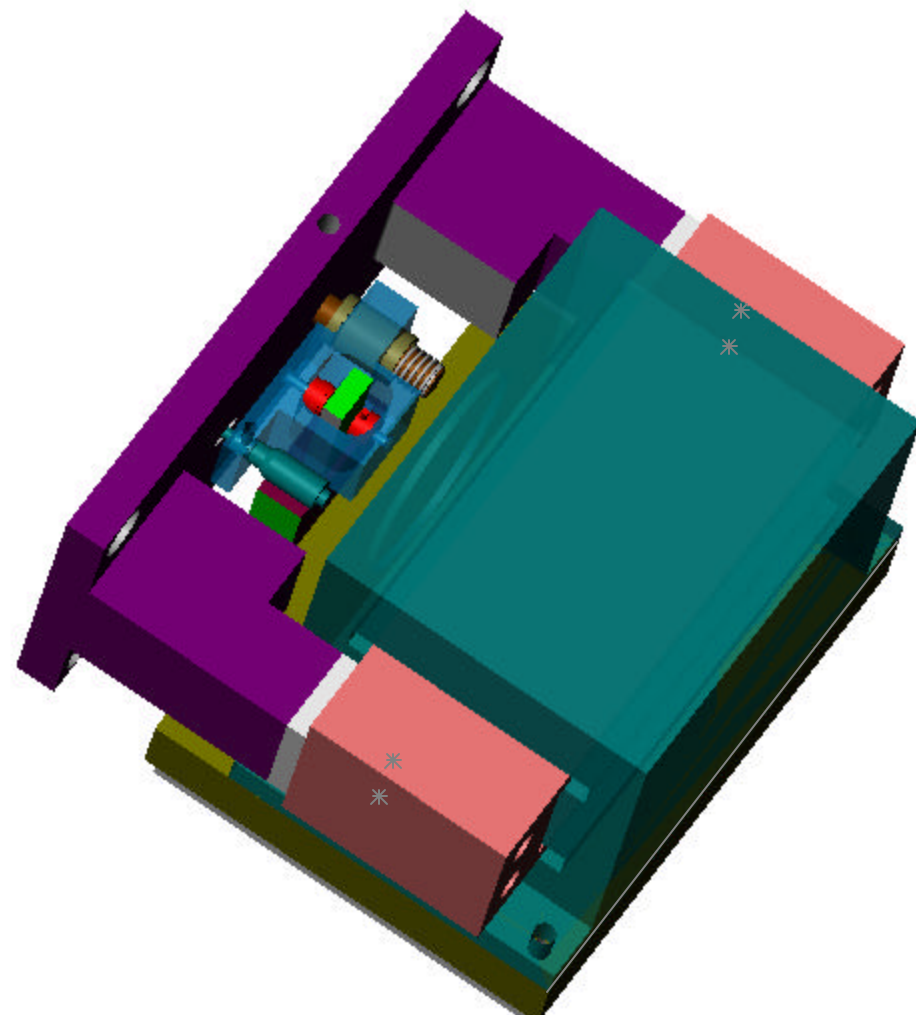
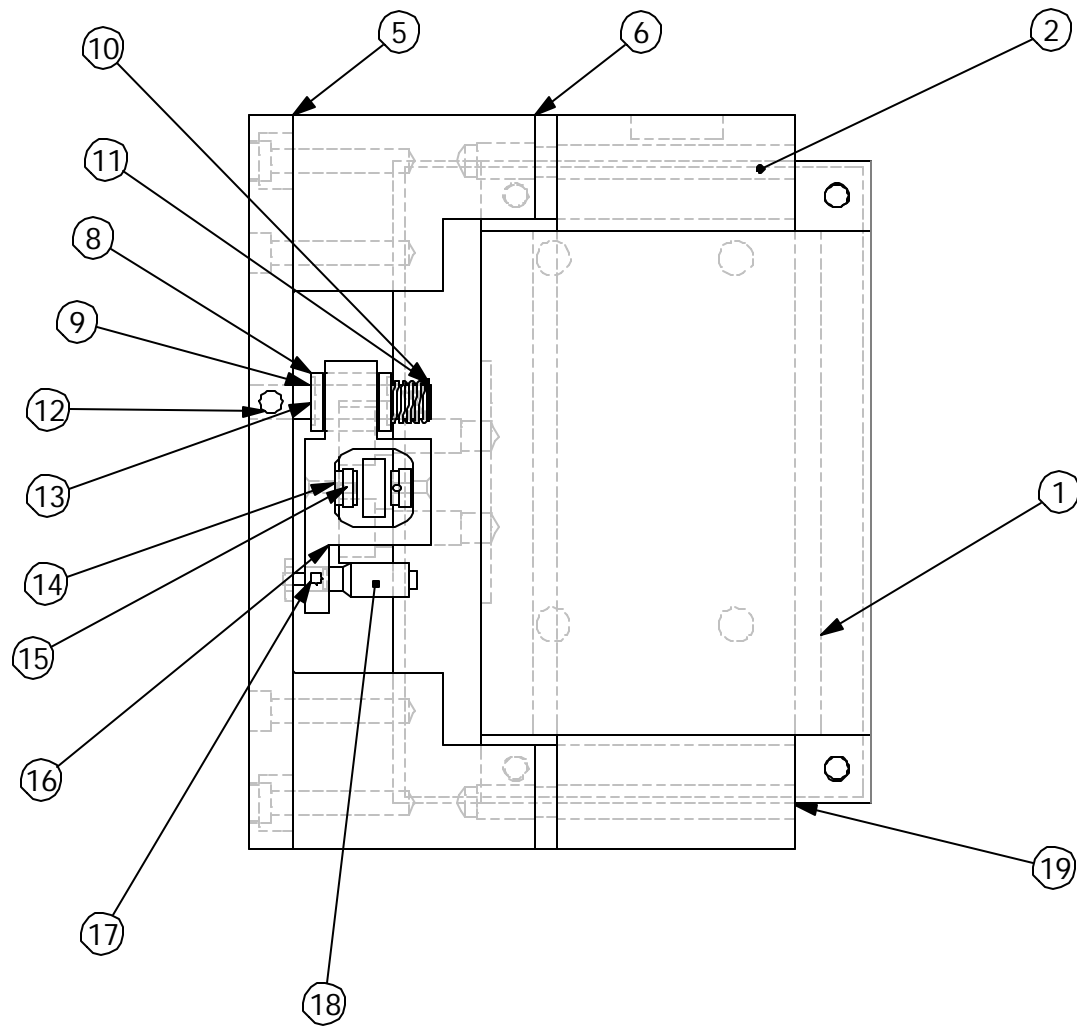



ITEM NO.	QTY.	PART NUMBER	PART DESCRIPTION
1	1	LA50-62-004Z FIELD ASSEMBLY	BEI KIMKO MAGNETICS
2	1	LA50-62-004Z COIL ASSEMBLY	BEI KIMKO MAGNETICS
3	1	D020253-00	BASE PLATE
4	1	D020255-01	POSITION FLAG
5	1	D020256-01	PUSH BAR
6	2	D020264-00	COIL INSULATOR
7	1	D020254-00	BASE INSULATOR
8	1	MSC# 35528025	3/8 DIA BALL BUSHING
9	2	MSC# 02730349	BALL BUSHING RETAINER
11	1	MSC# 67154203	3/8 EXT. RETAINING RING
12	1	McMASTER # 90251A550	1/4-20 X .62 SET SCREW
13	1	D020305-00	SENSOR POST
14	1	DIT-5200-20N	KAMAN INSTRUMENT CORP
16	1	D020257-01	POSITION SENSOR HOUSING
17	1	MSC# 06268726	VERNIER HEAD
18	1	McMASTER#	6-32 X .50 LG SET SCREW
19	4	McMASTER#	3/8-16 x 3.25 LG SHCS
20	2	McMASTER#	3/8-16 x 1.0 LG SHCS

REVISIONS			
ZONE	REV	DESCRIPTION	DATE



UNLESS OTHERWISE SPECIFIED: DECIMALS ANGLES .XX*.06 *1 .XXX*.01 *5 .XXX*.005		 <b>LIGO</b> CALIFORNIA INSTITUTE OF TECHNOLOGY MASSACHUSETTS INSTITUTE OF TECHNOLOGY	DRAWN: C. MASON 4/11/02 CHECKED:		TITLE: ELECTRO-MAGNETIC ACTUATOR ASSEMBLY	
MATERIAL: ..			COMMENTS:		SIZE <b>D</b>	DWG. NO. D020183-01-D
DO NOT SCALE DRAWING		SCALE: 1:1		SHEET 1 OF 1		