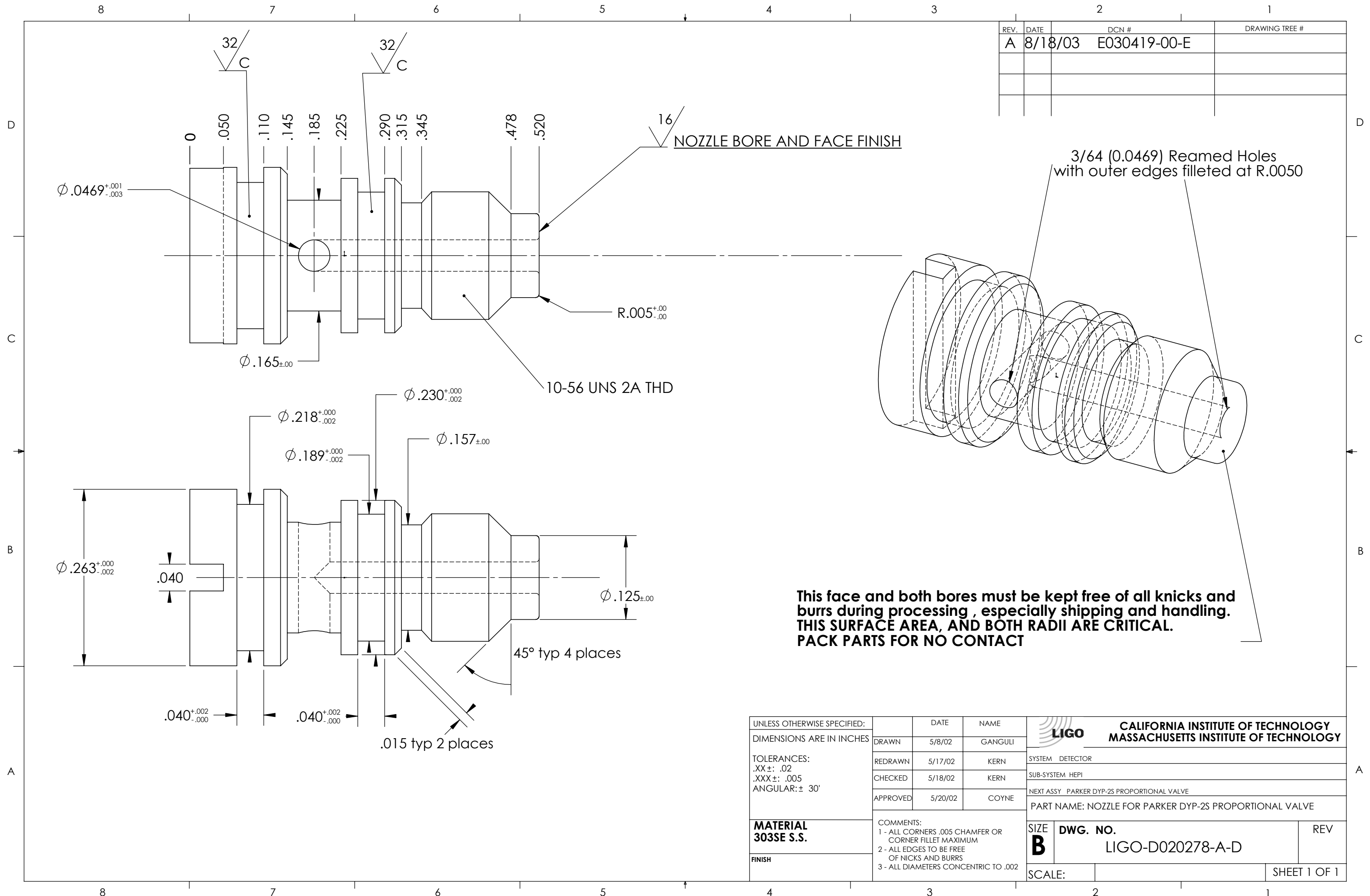


REV.	DATE	DCN #	DRAWING TREE #
A	8/18/03	E030419-00-E	



This face and both bores must be kept free of all knicks and burrs during processing, especially shipping and handling. THIS SURFACE AREA, AND BOTH RADII ARE CRITICAL. PACK PARTS FOR NO CONTACT

UNLESS OTHERWISE SPECIFIED: DIMENSIONS ARE IN INCHES TOLERANCES: .XX±: .02 .XXX±: .005 ANGULAR: ± 30'	DATE	NAME	CALIFORNIA INSTITUTE OF TECHNOLOGY MASSACHUSETTS INSTITUTE OF TECHNOLOGY
	DRAWN	GANGULI	
	REDRAWN	KERN	
	CHECKED	KERN	
APPROVED	5/20/02	COYNE	NEXT ASSY: PARKER DYP-2S PROPORTIONAL VALVE
MATERIAL 303SE S.S.	COMMENTS: 1 - ALL CORNERS .005 CHAMFER OR CORNER FILLET MAXIMUM 2 - ALL EDGES TO BE FREE OF NICKS AND BURRS 3 - ALL DIAMETERS CONCENTRIC TO .002		PART NAME: NOZZLE FOR PARKER DYP-2S PROPORTIONAL VALVE
FINISH	SIZE	DWG. NO.	REV
	B	LIGO-D020278-A-D	
	SCALE:	SHEET 1 OF 1	