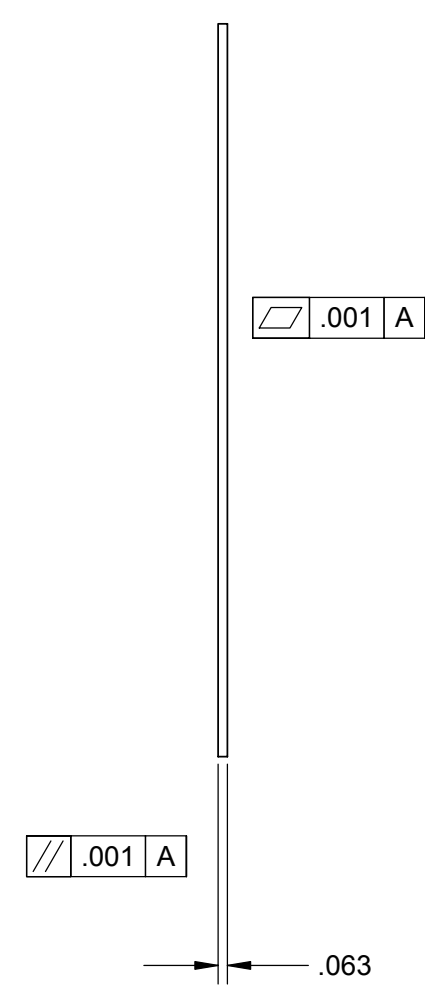
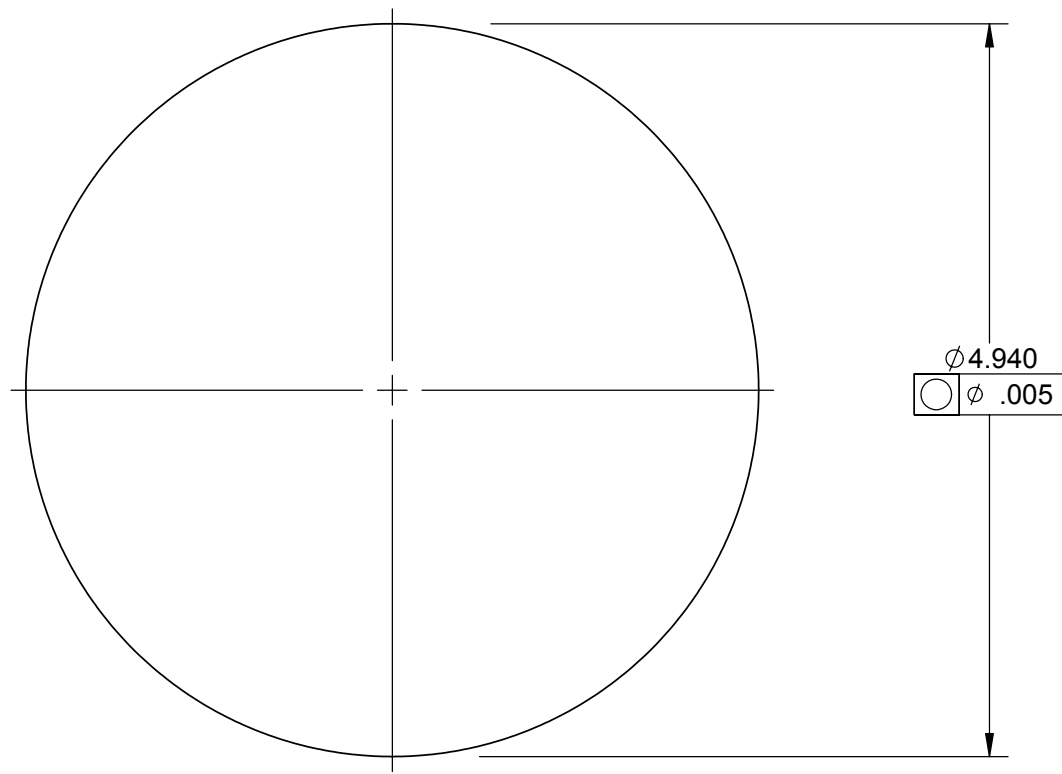



REV.	DATE	DCN #	DRAWING TREE #
A	Fall'02		
B	6/9/03	E030373-00-E	



Break all Sharp Edges

**NOTE: HEAT TREAT H-900
FLATNESS CRITICAL**

UNLESS OTHERWISE SPECIFIED:		DATE	NAME	 CALIFORNIA INSTITUTE OF TECHNOLOGY MASSACHUSETTS INSTITUTE OF TECHNOLOGY	
DIMENSIONS ARE IN INCHES		DRAWN	4/02	Hardham	
TOLERANCES:		REDRAWN	Fall' 02	Hammond	SYSTEM LASTI
.XX ± 0.020"		REDRAWN	6/9/03	Spjeld	SUB-SYSTEM HEPI
.XXX ± 0.005"		CHECKED	2/9/03	Kern	NEXT ASSY
ANGULAR ± 30°					PART NAME HEPI Actuator Diaphragm
MATERIAL	17-4PH	COMMENTS:		SIZE	DWG. NO.
FINISH	120 RMS unless noted	1 Required for each actuator		C	D020286
		SCALE:		1:1 unless noted	REV B
				Shf. No. 8 / 43	