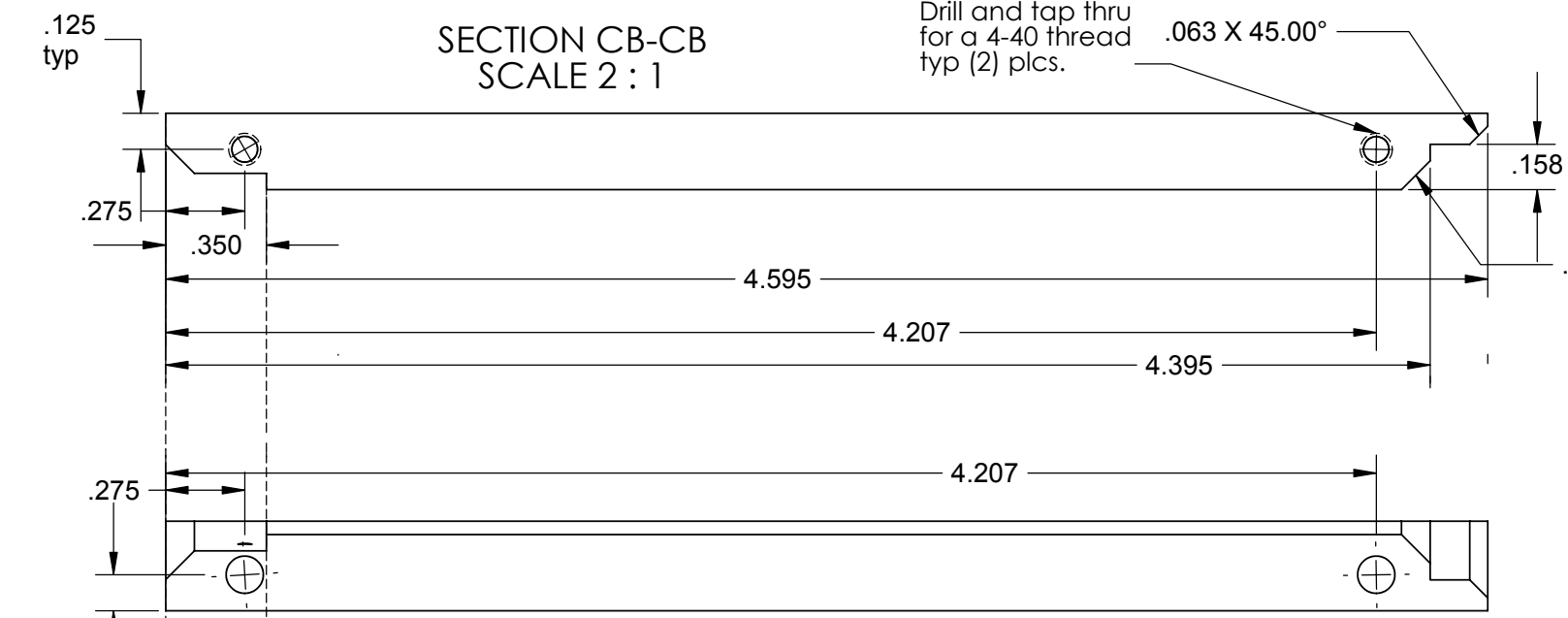


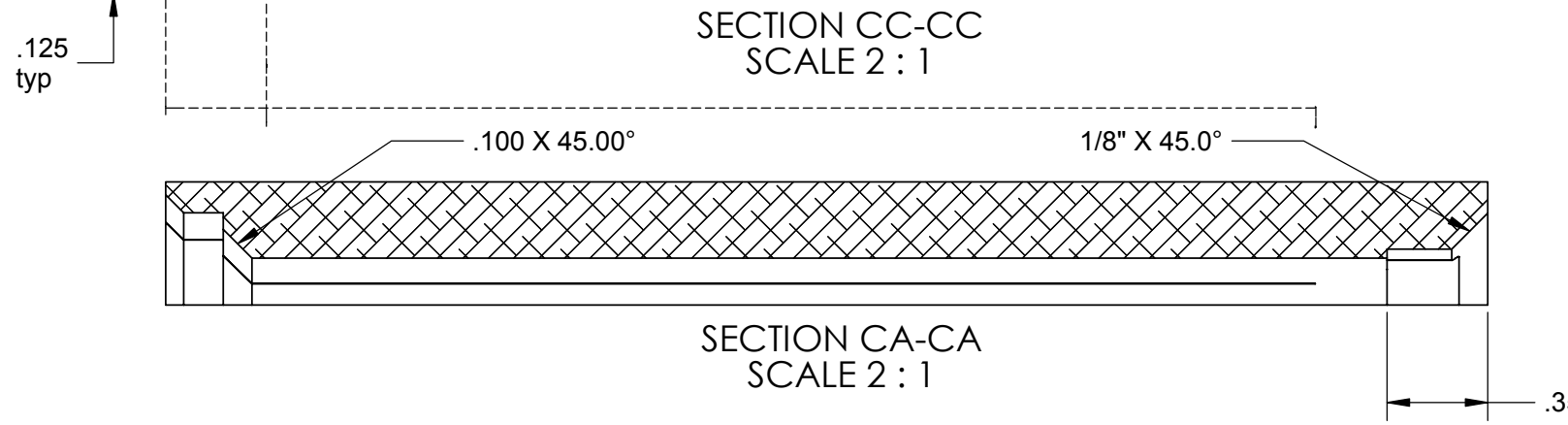
REV.	DATE	DCN #	DRAWING TREE #
A	Fall'02		
B	6/11/03	E030373-00-E	

Slit approx. 0.015" by wire EDM, slitting saw or best shop practice.
 Slit extends 0.60" away from bottom.
 Typ (2) places. Near side shown.
 Far side equal and opposite

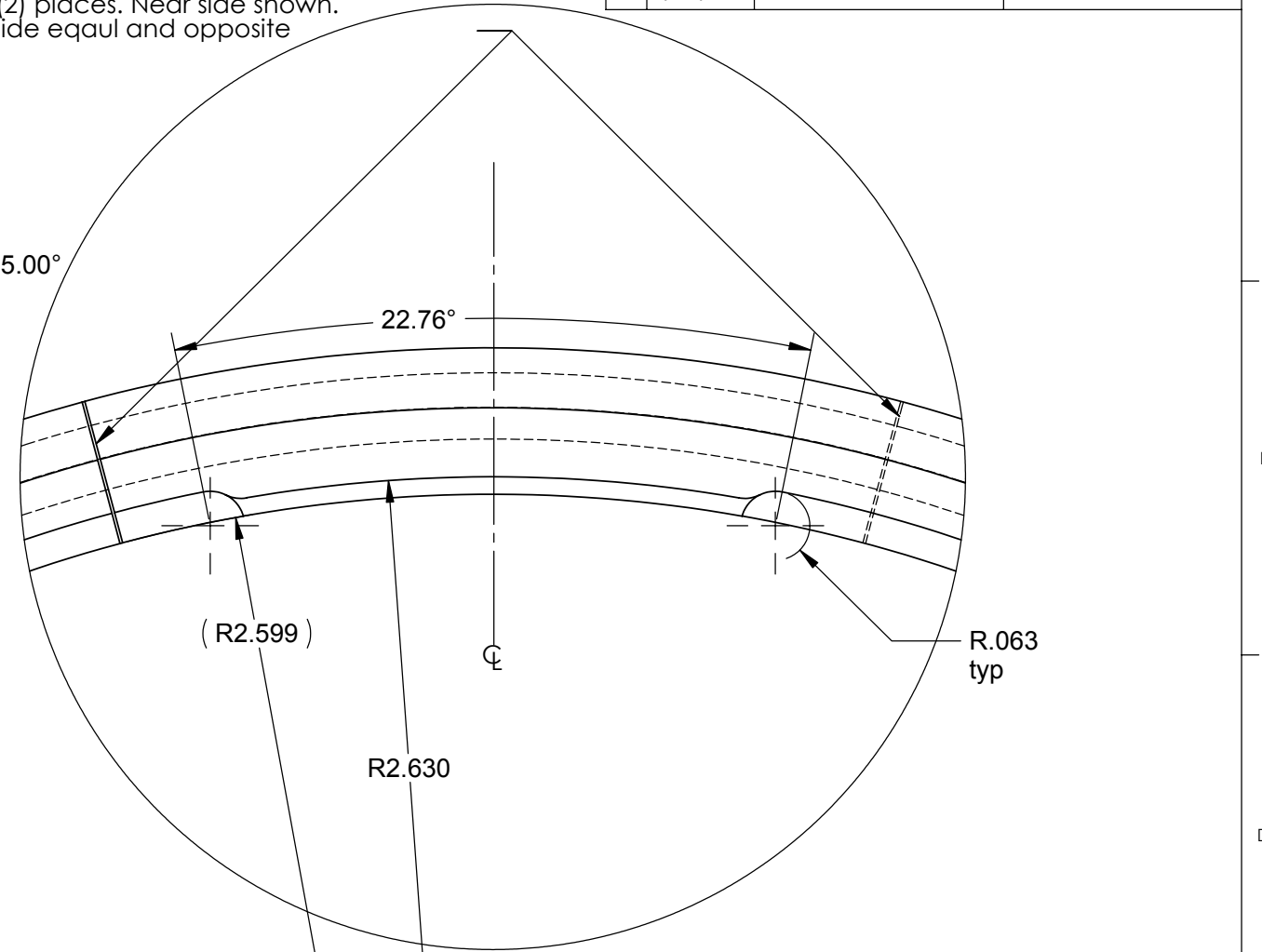
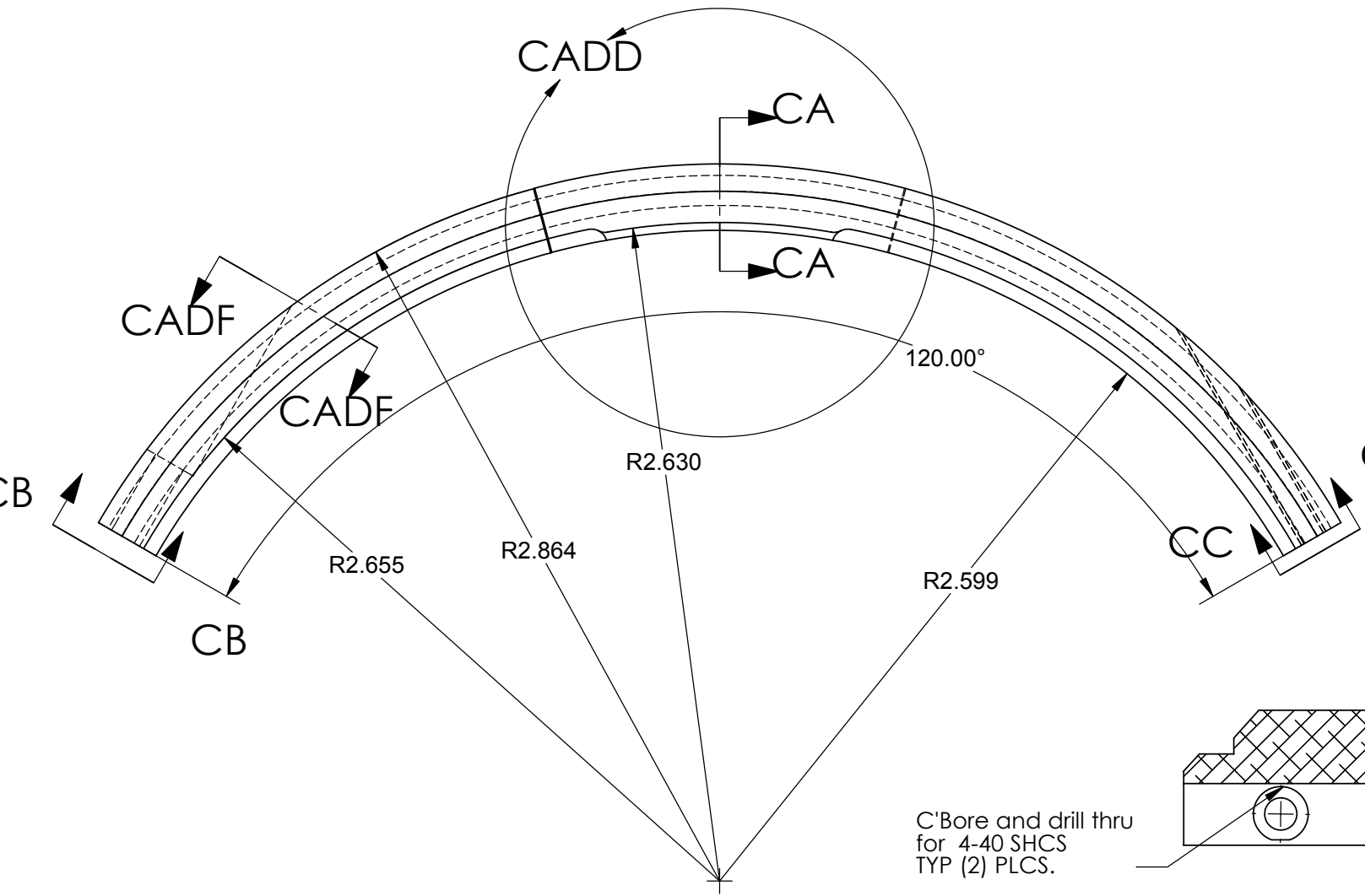
SECTION CB-CB
 SCALE 2 : 1



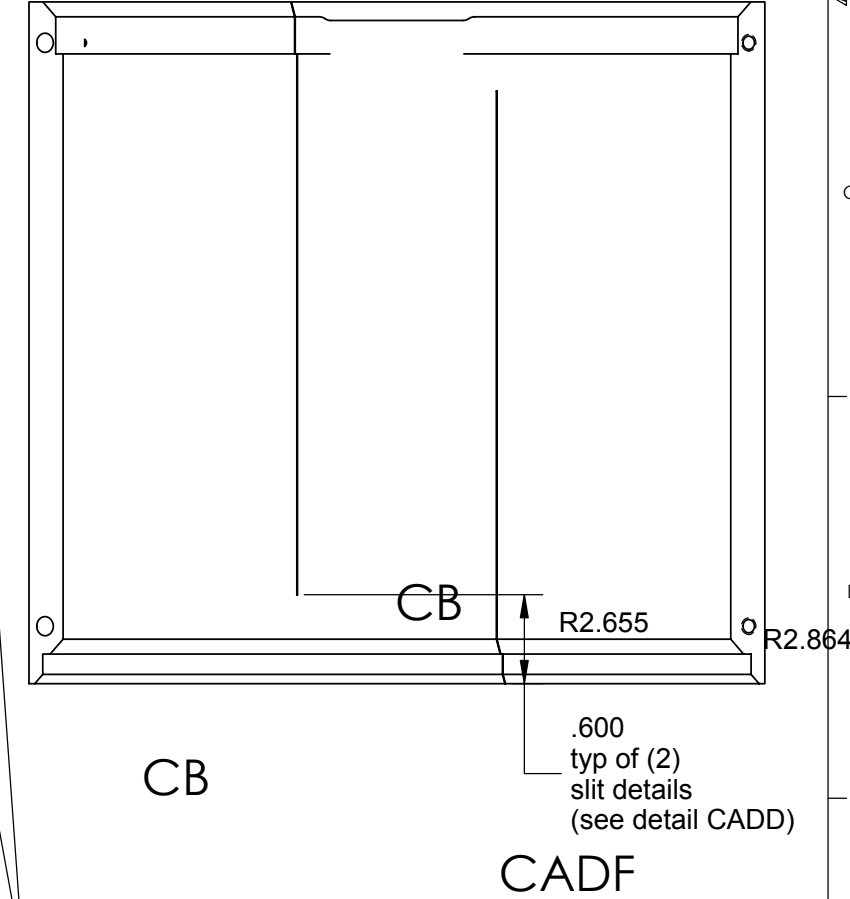
SECTION CC-CC
 SCALE 2 : 1



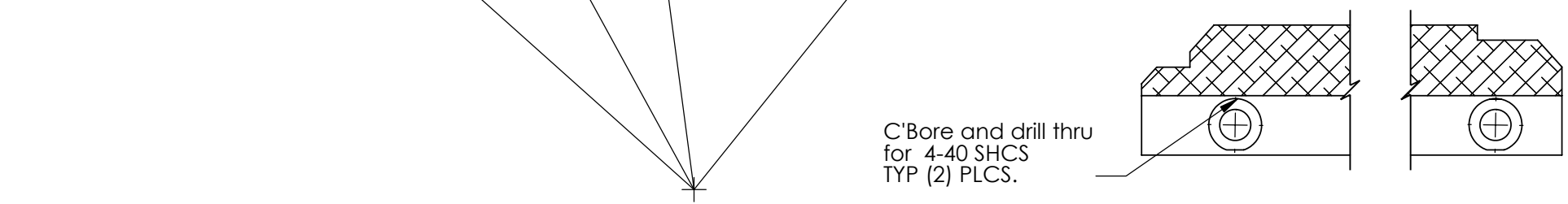
SECTION CA-CA
 SCALE 2 : 1



DETAIL CADD
 SCALE 4 : 1



SECTION CADF-CADF
 SCALE 2 : 1



C'Bore and drill thru
 for 4-40 SHCS
 TYP (2) PLCS.

UNLESS OTHERWISE SPECIFIED:
 DIMENSIONS ARE IN INCHES

TOLERANCES:
 .XX ± 0.02"
 .XXX ± 0.001"
 ANGULAR ± 30'

MATERIAL
 6061-T6 Alum

FINISH
 120 RMS
 unless noted

DRAWN	DATE	NAME
Hardham	4/02	
Hammond	Fall '02	
Spjeld	6/11/03	
Kern	2/9/03	

CALIFORNIA INSTITUTE OF TECHNOLOGY MASSACHUSETTS INSTITUTE OF TECHNOLOGY	
SYSTEM	CADF
SUB-SYSTEM	HEPI
NEXT ASSY	
PART NAME	HEPI Bellows Shield
SIZE	DWG. NO. D020302
SCALE:	1:1 unless noted
REV	B
Sht. No. 23 / 43	