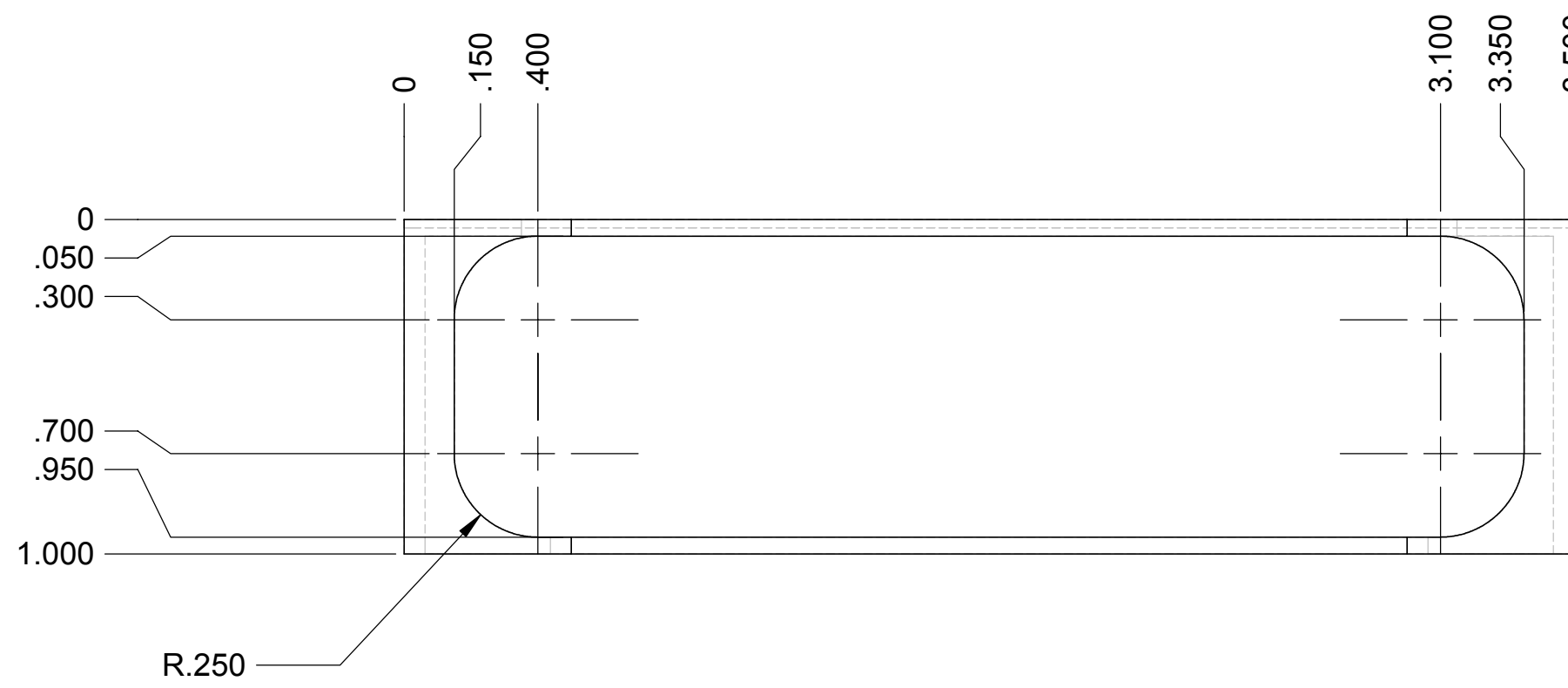
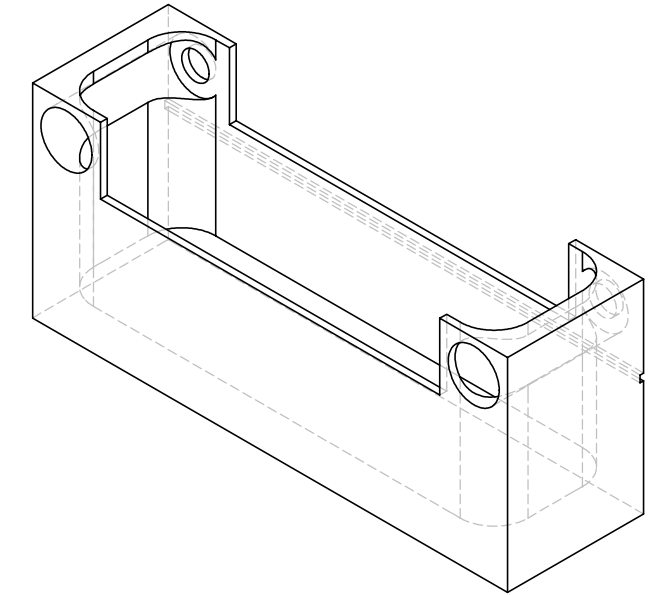
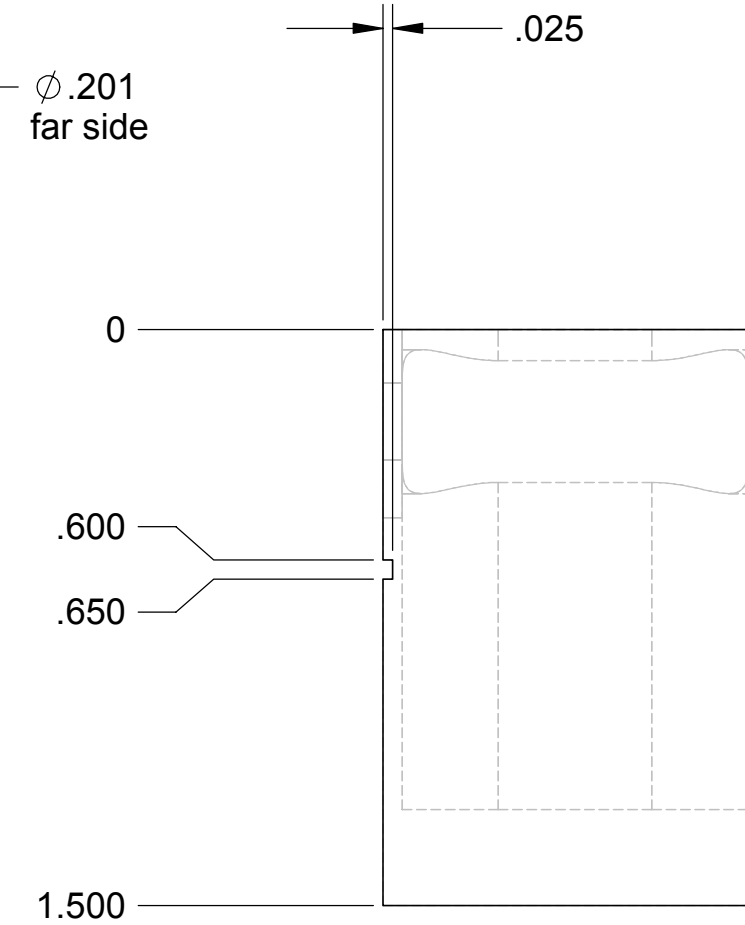
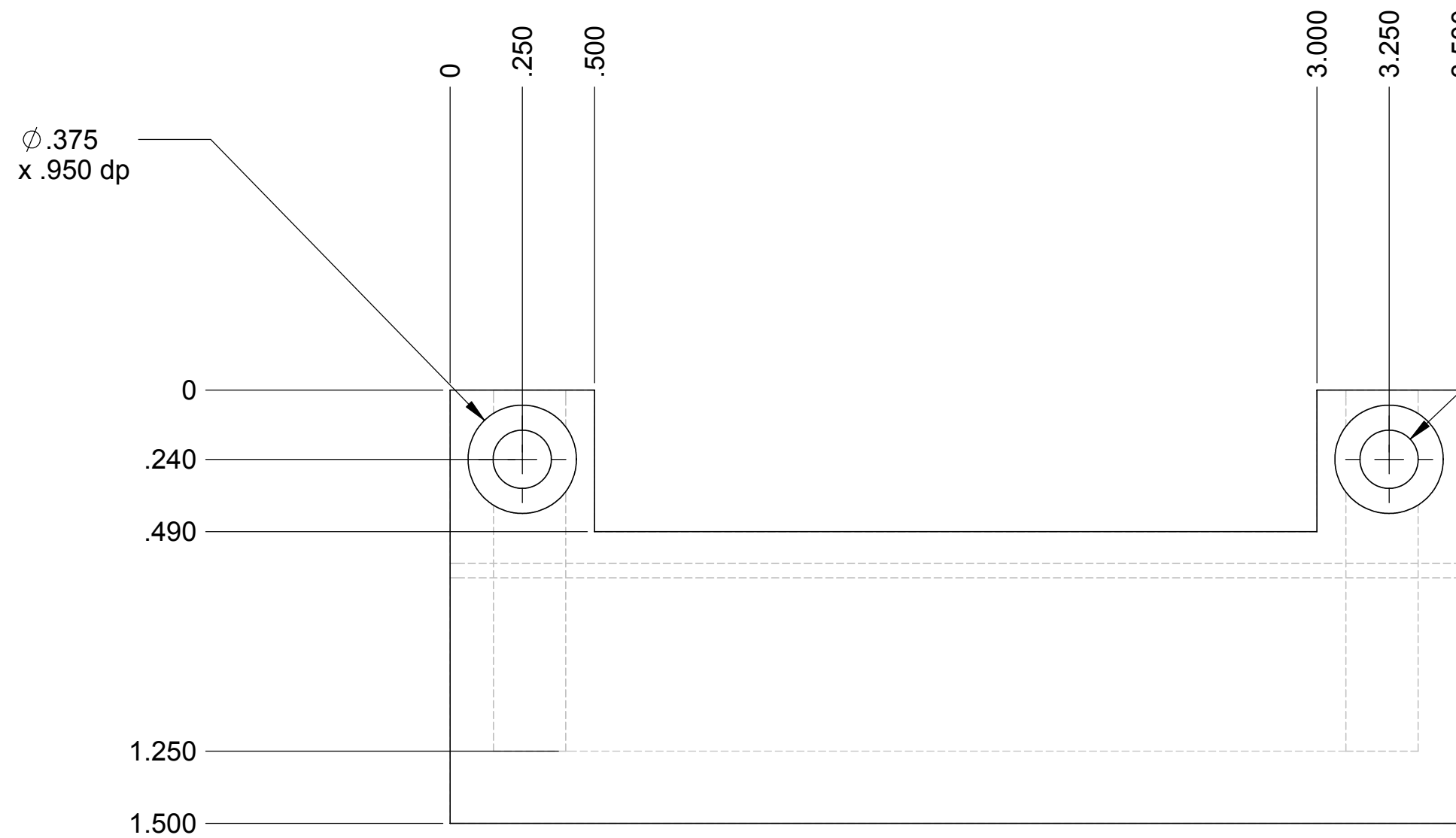



NOTES: (UNLESS OTHERWISE SPECIFIED)

REV.	DATE	DCN #	DRAWING TREE #
A	2/9/2003		



UNLESS OTHERWISE SPECIFIED:		DATE	NAME	 CALIFORNIA INSTITUTE OF TECHNOLOGY MASSACHUSETTS INSTITUTE OF TECHNOLOGY		
DIMENSIONS ARE IN INCHES		DRAWN	4/02		Hardham	
TOLERANCES: .XX ± 0.02"		REDRAWN	5/23/02		Kern	
.XXX ± 0.001"		CHECKED	2/9/03	Kern	SYSTEM	LASTI
ANGULAR ± 30'					SUB-SYSTEM	HEPI
MATERIAL		COMMENTS:		NEXT ASSY	PART NAME	
ALUM 6061-T6		1 Required for each actuator			Oil Catch Horiz & Vert	
FINISH		SCALE: 2:1		SIZE	DWG. NO.	REV
32 RMS unless noted		1:1 unless noted		C	D020303-A-E	A

FILE NAME/LOCATION: