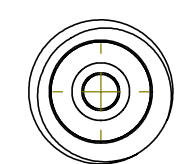
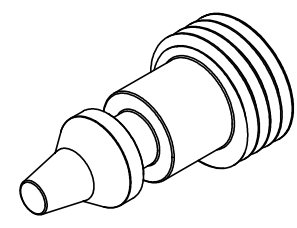
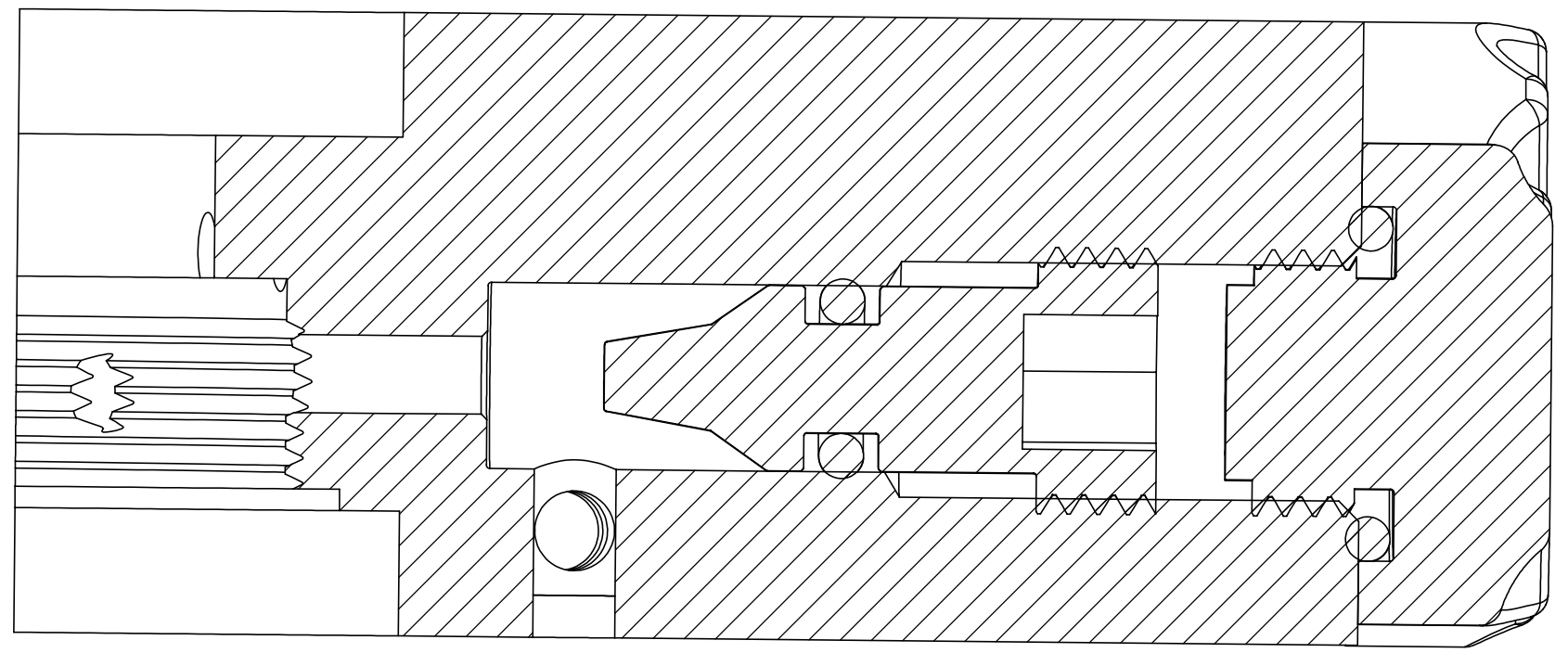
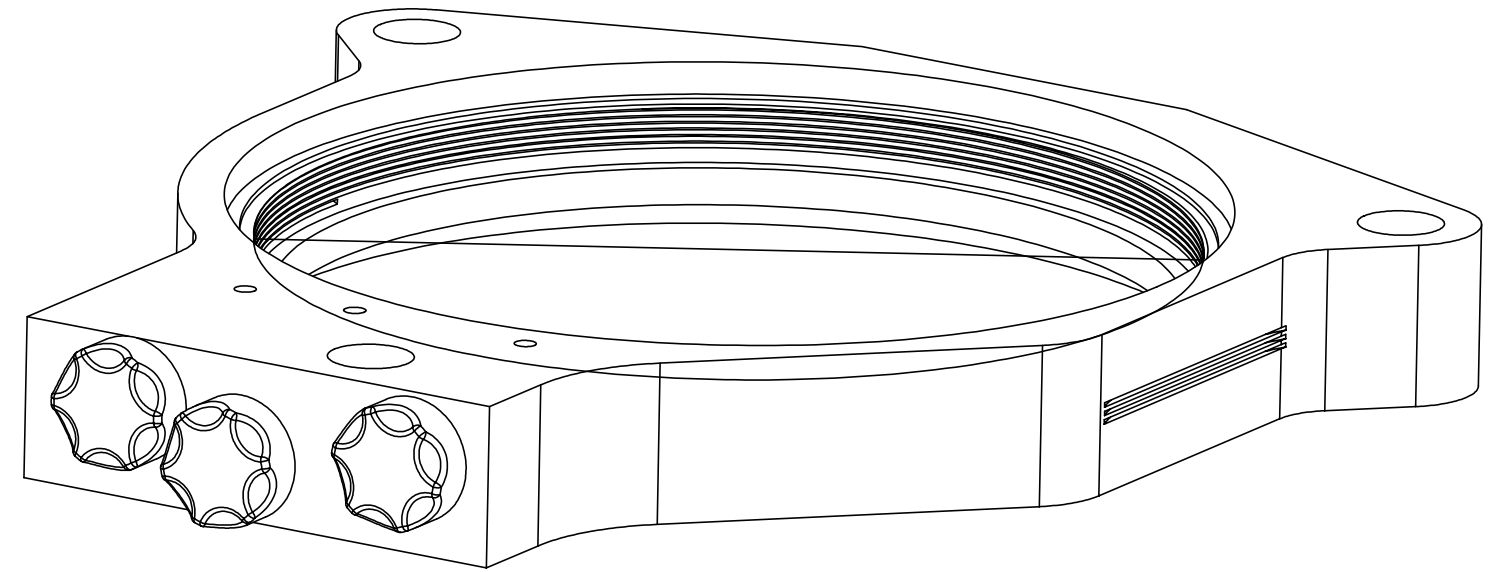
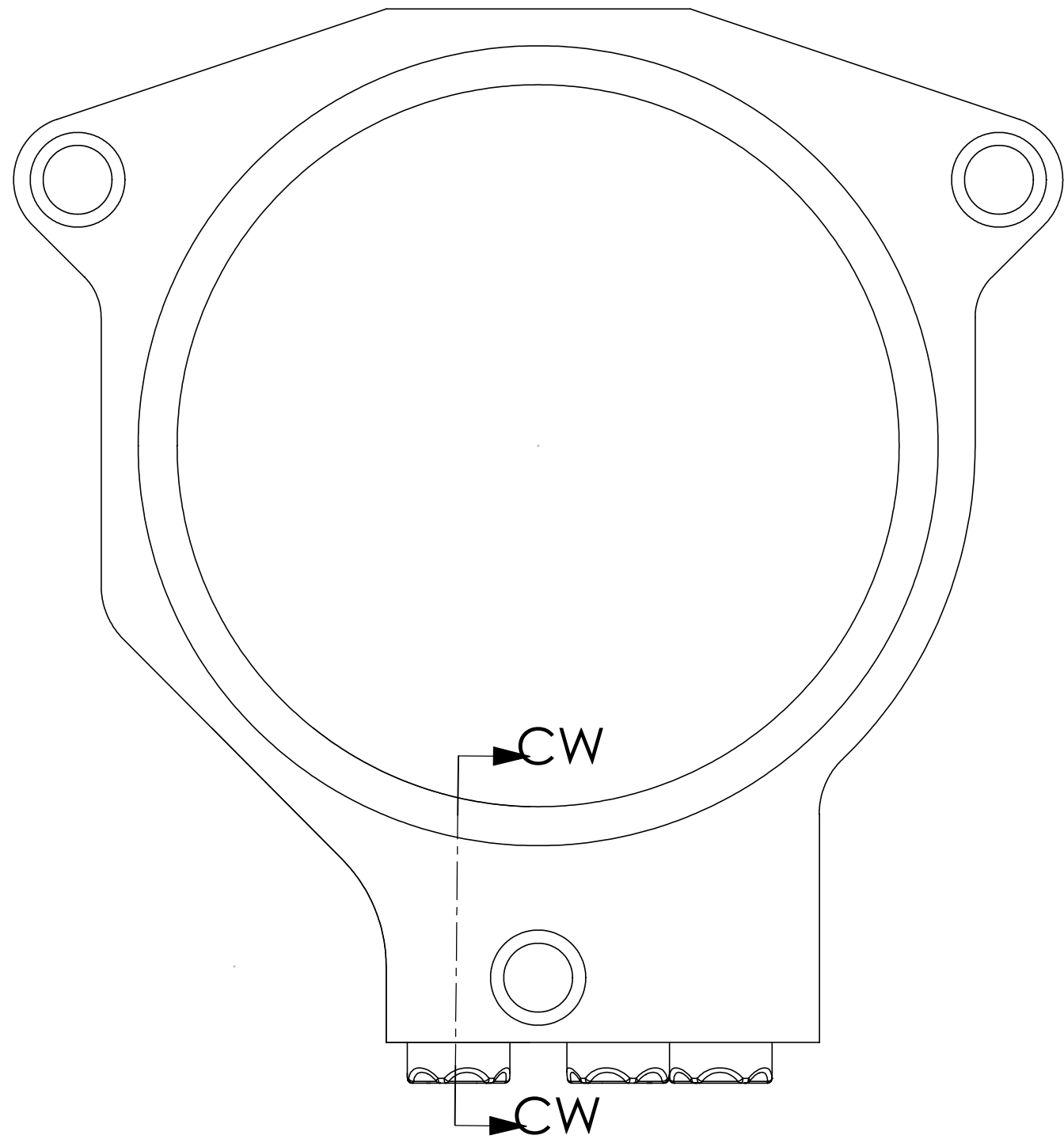
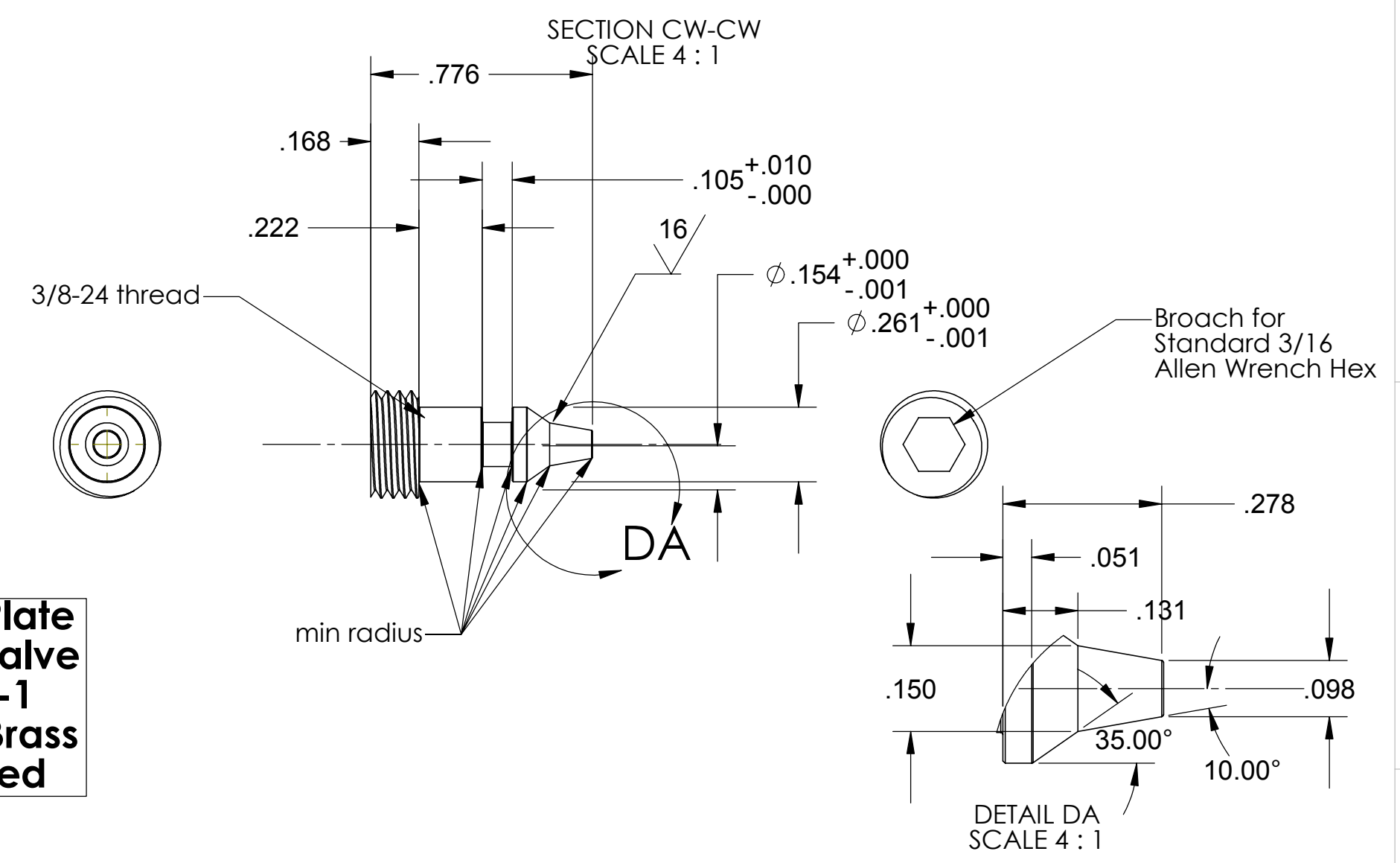


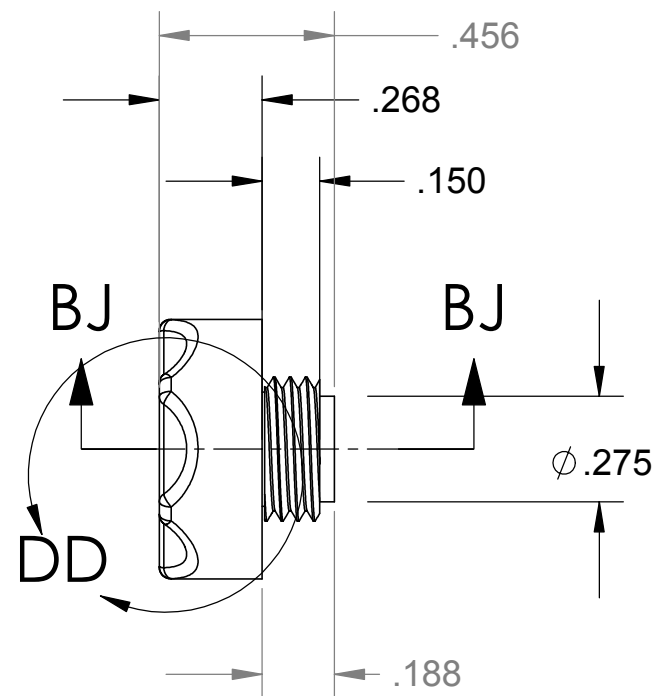
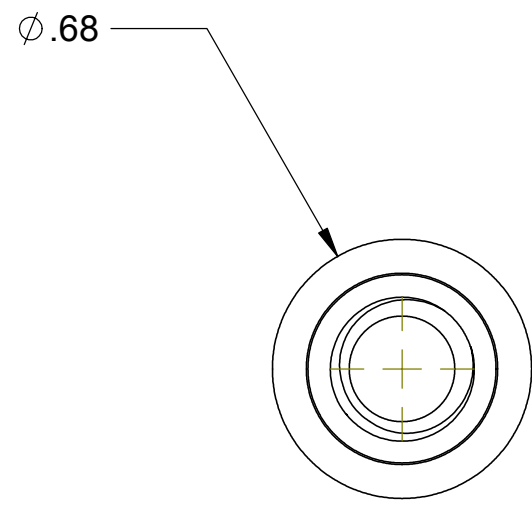
REV.	DATE	DCN #	DRAWING TREE #
A	2/9/2003		



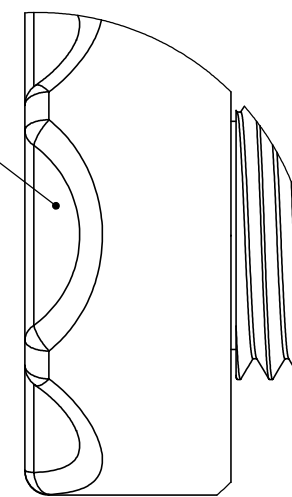
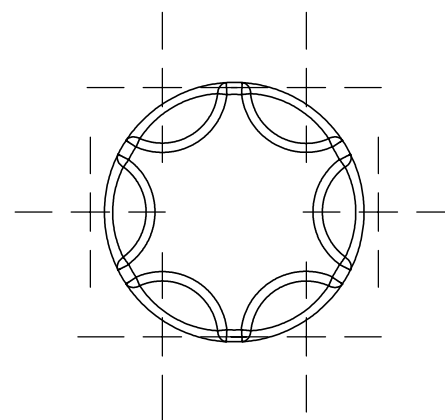
**Actuation Plate
Small Pin Valve
D020359-1
Mat'l: 464 Brass
(5) required**



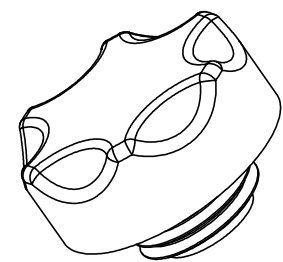
UNLESS OTHERWISE SPECIFIED:		DATE	NAME	CALIFORNIA INSTITUTE OF TECHNOLOGY MASSACHUSETTS INSTITUTE OF TECHNOLOGY	
DIMENSIONS ARE IN INCHES		DRAWN	4/02		Hardham
TOLERANCES: .XX ± 0.020"		REDRAWN	Fall '02		Hammond
.XXX ± 0.005"		CHECKED	2/9/03		Kern
ANGULAR ± 30'		COMMENTS:		SYSTEM LASTI	
MATERIAL				SUB-SYSTEM HEPI	
FINISH 32 RMS unless noted				NEXT ASSY	
				PART NAME HEPI Actuation Plate, plug and small pin valve	
				SIZE DWG. NO. D020359-A-E Sheet 1 of 2	
				REV A	
				SCALE: 1:1 unless noted	



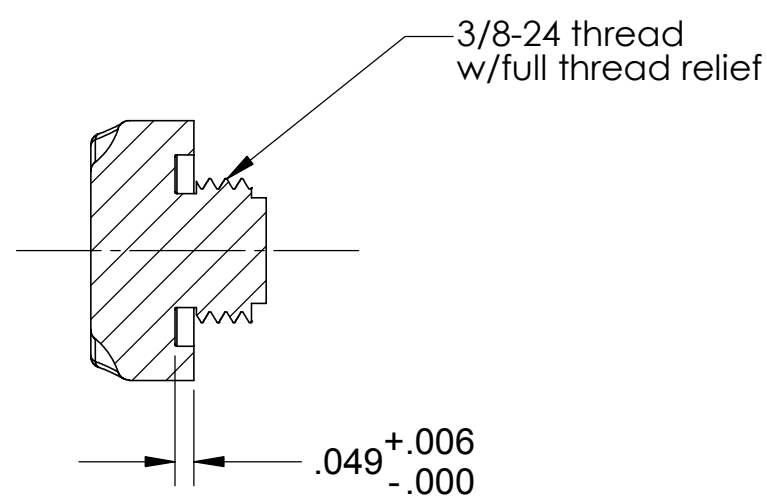
Scallop for thumb screws
approx. as shown with best
shop Practice. Typ for both
Details D020359-2 & D020359-2A



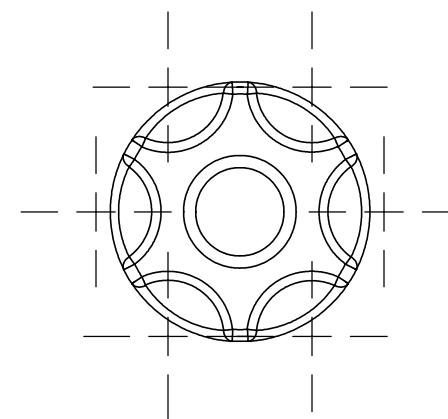
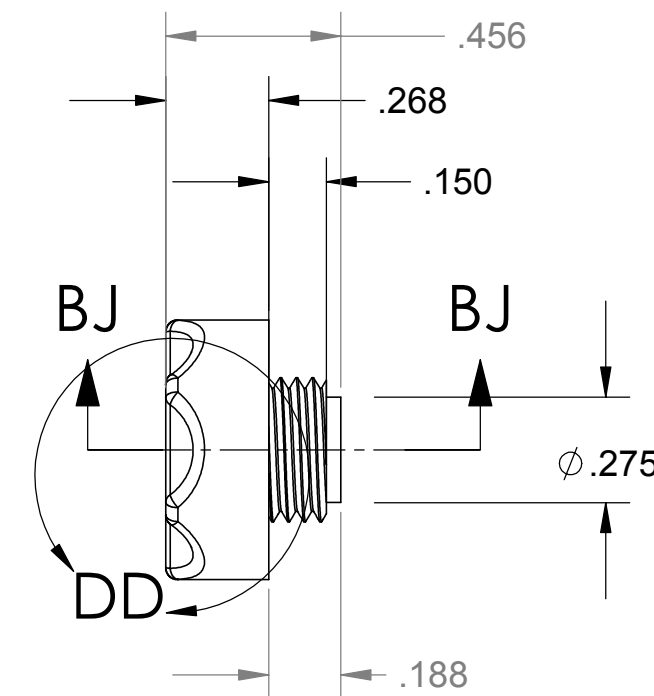
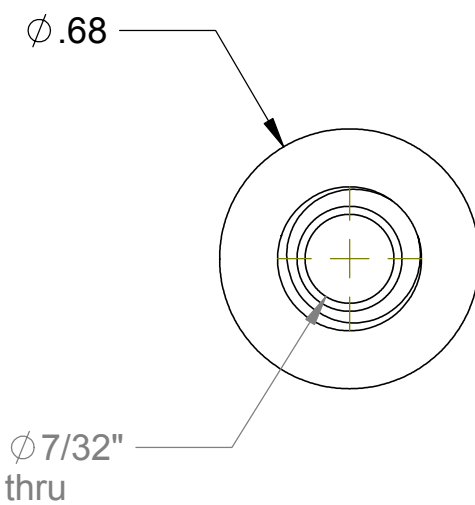
DETAIL DD
SCALE 4 : 1



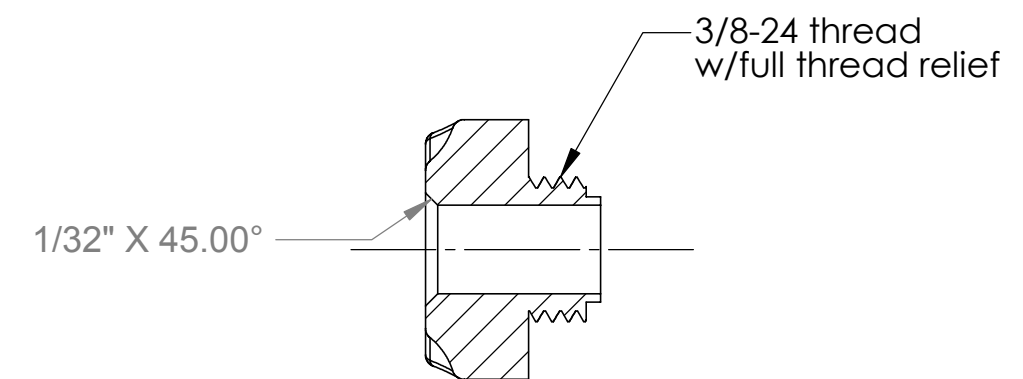
**Actuator Plate Plug
D020359-2
Mat'l: 6061-T6
(5) required**



SECTION B-J-BJ
SCALE 2 : 1



**Actuator Plate Plug
D020359-2A
Mat'l: 6061-T6
(5) required**



SECTION B-J-BJ
SCALE 2 : 1

UNLESS OTHERWISE SPECIFIED:		DATE	NAME	CALIFORNIA INSTITUTE OF TECHNOLOGY MASSACHUSETTS INSTITUTE OF TECHNOLOGY	
DIMENSIONS ARE IN INCHES		DRAWN	4/02		Hardham
TOLERANCES:		REDRAWN	Fall 02		Hammond
.XX ± 0.020"		CHECKED	2/9/03		Kern
.XXX ± 0.005"					
ANGULAR ± 30'					
MATERIAL		COMMENTS:			
FINISH					
32 RMS unless noted					

SYSTEM	LASTI
SUB-SYSTEM	HEPI
NEXT ASSY	
PART NAME	Actuator Plate Plug
SIZE	DWG. NO.
C	D020359-A-E sht 2
SCALE:	1:1 unless noted