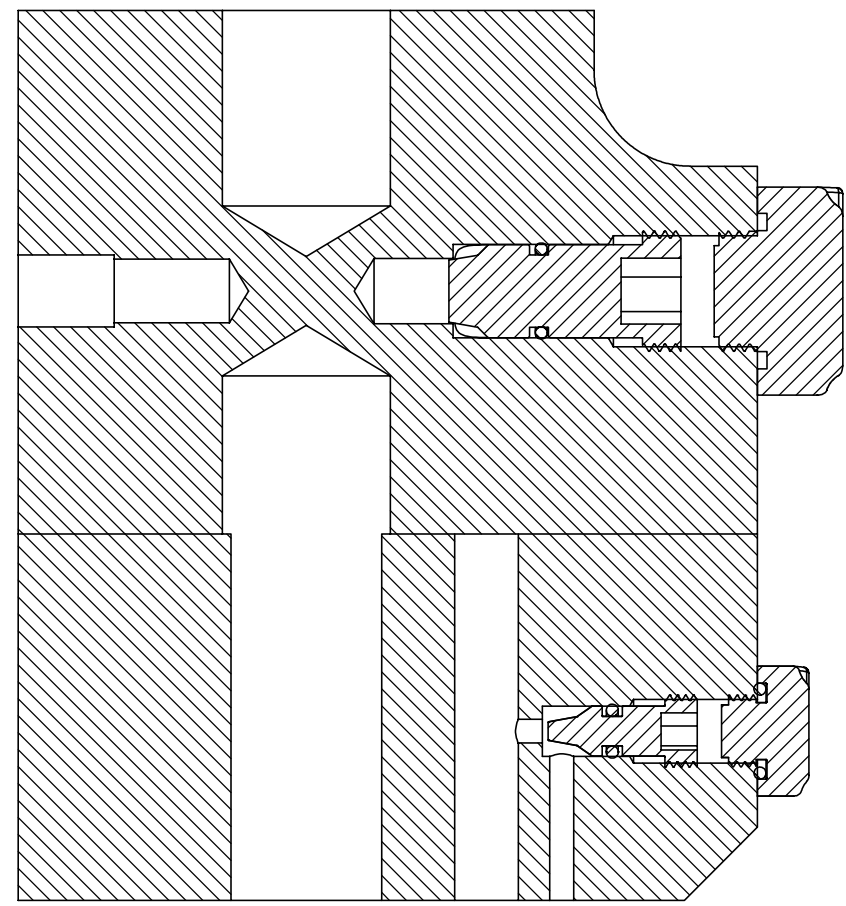
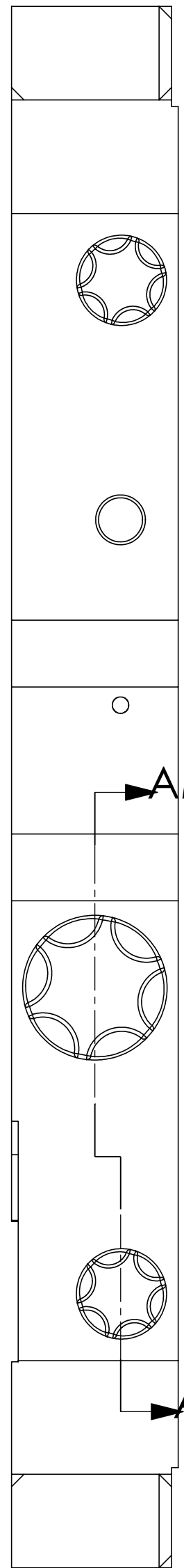
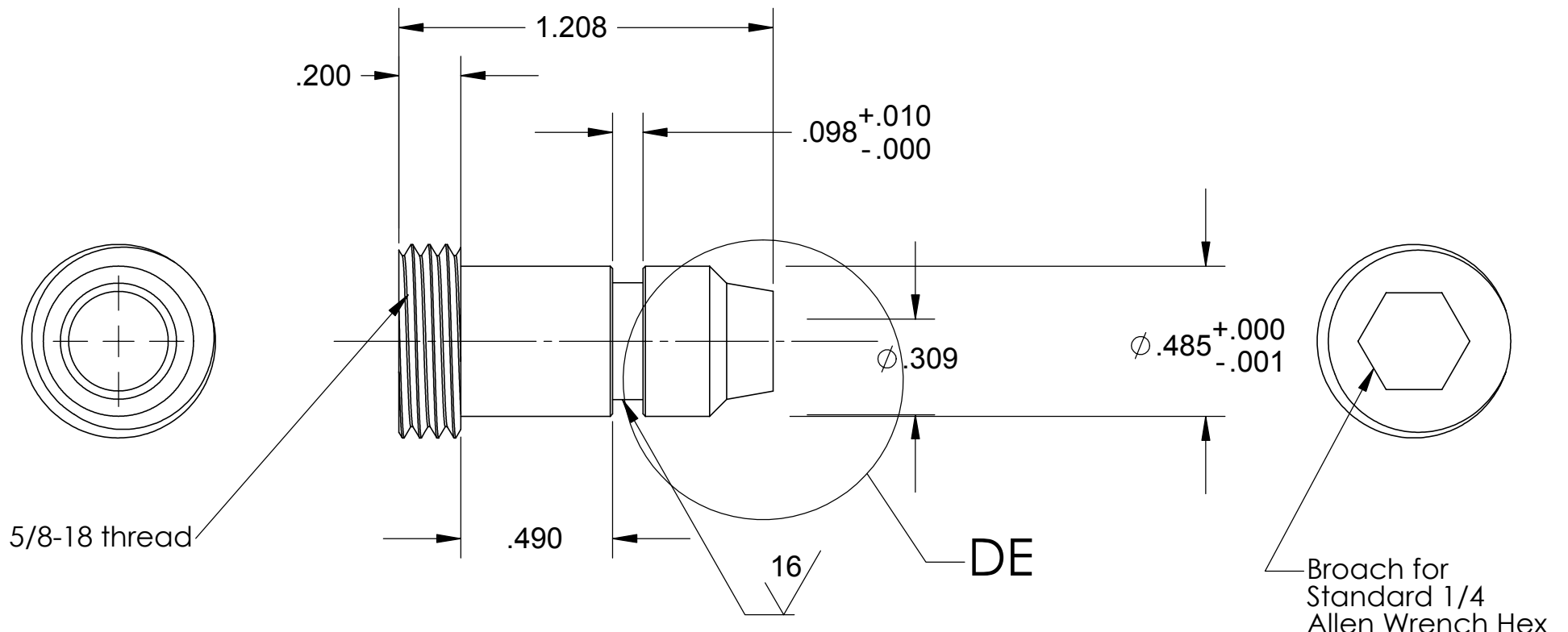


REV.	DATE	DCN #	DRAWING TREE #
A	2/9/2003		

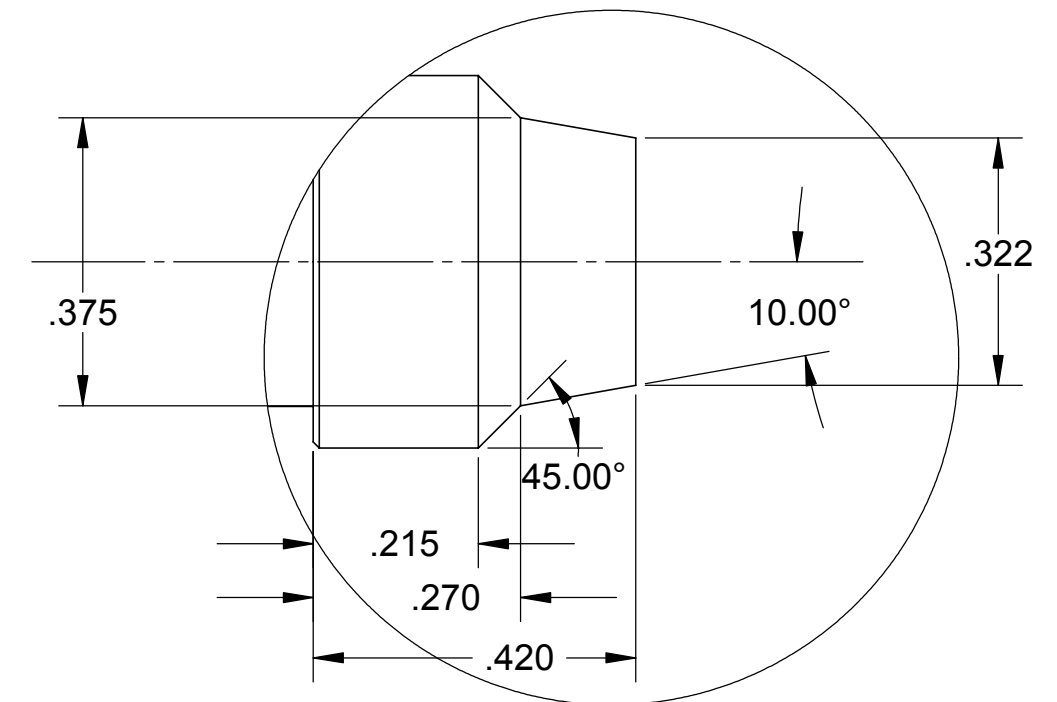



SECTION AM-AM



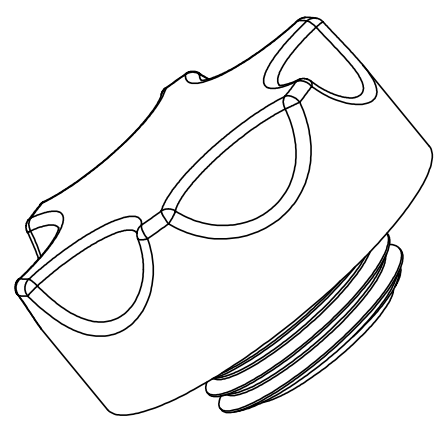
DETAIL DE
SCALE 4 : 1

**Manifold
Large Pin Valve
D020367-1
Mat'l: 17-4PH
(1) required**

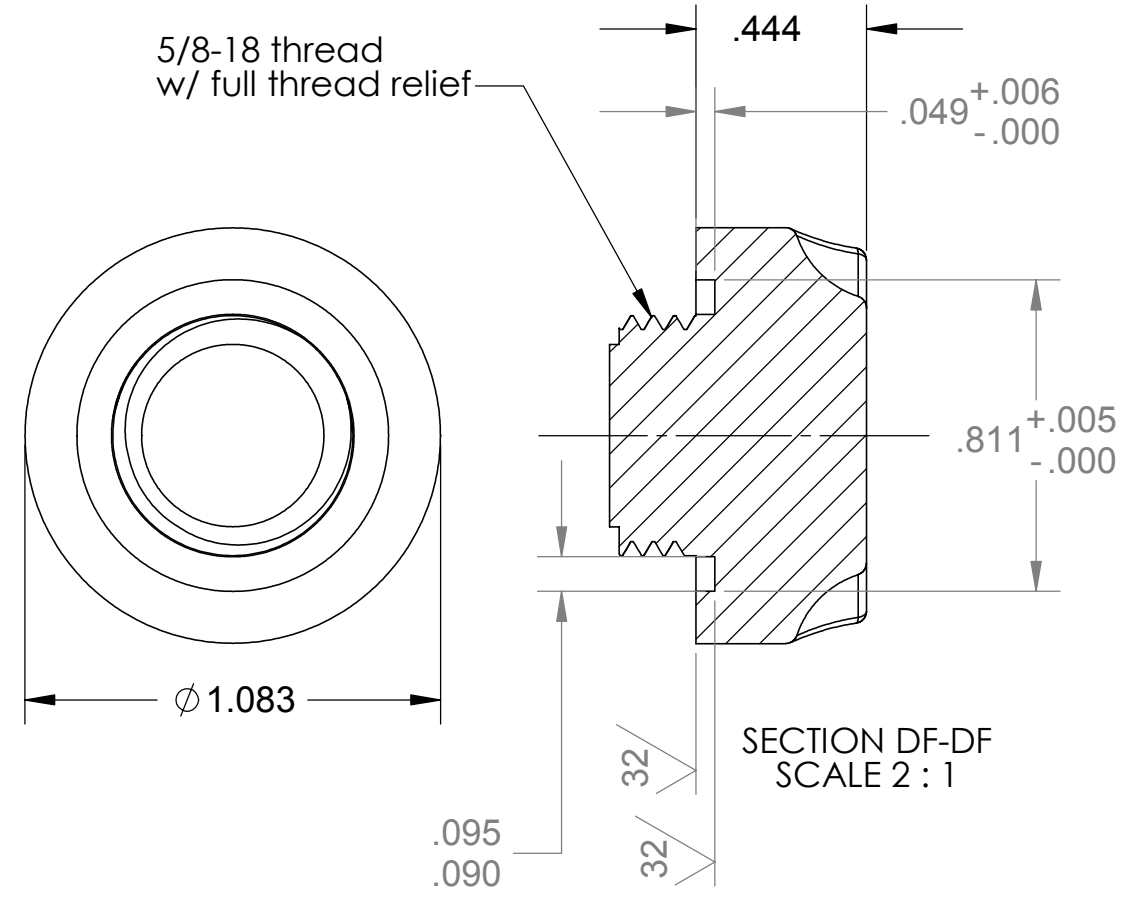
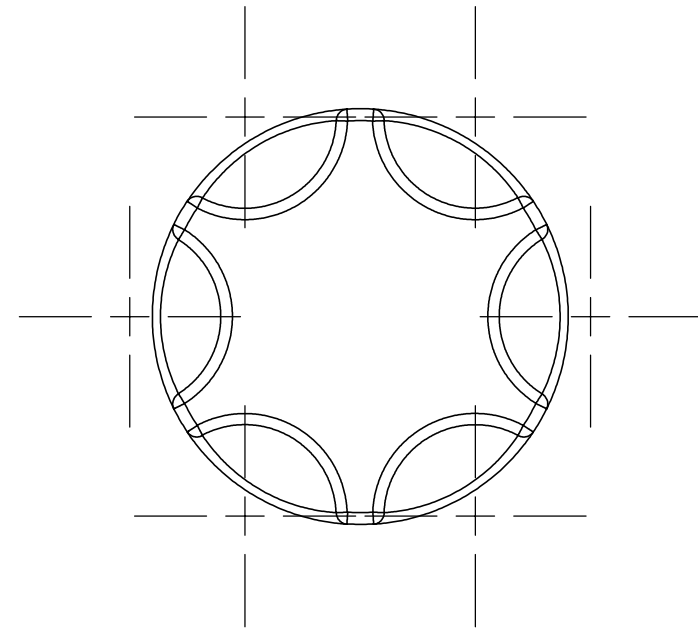
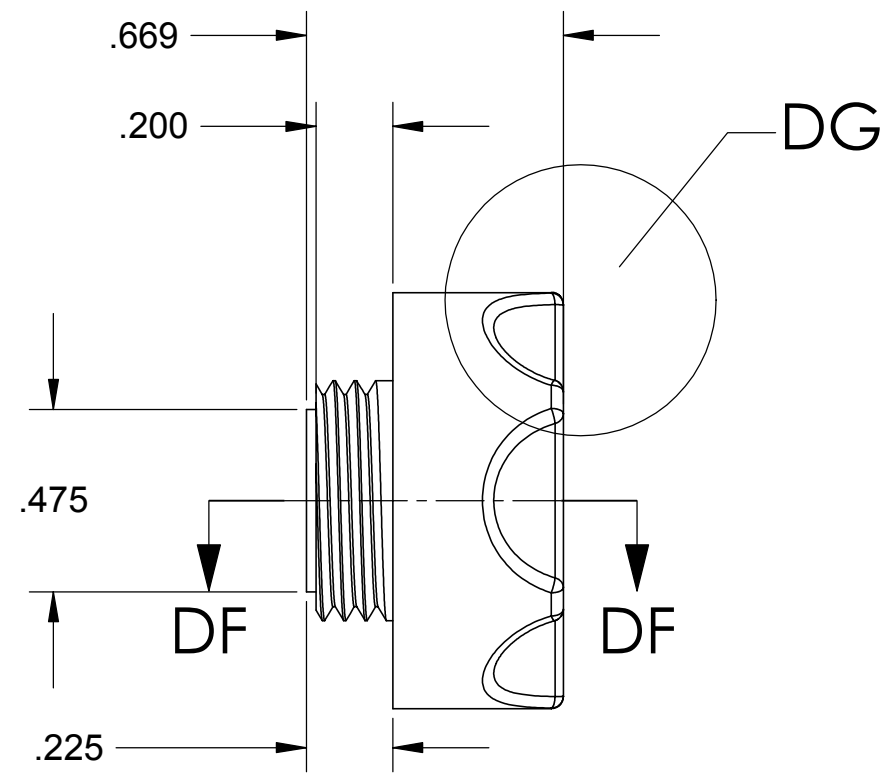


UNLESS OTHERWISE SPECIFIED:		DATE	NAME	 CALIFORNIA INSTITUTE OF TECHNOLOGY MASSACHUSETTS INSTITUTE OF TECHNOLOGY	
DIMENSIONS ARE IN INCHES		DRAWN	4/02		Hardham
TOLERANCES:		REDRAWN	Fall '02	Hammond	SYSTEM LASTI
.XX ± 0.020"		CHECKED	2/9/03	Kern	SUB-SYSTEM HEPI
.XXX ± 0.005"					NEXT ASSY
ANGULAR ± 30'					HEPI Manifold Sheet 3 of 3 with large pin valve
MATERIAL		COMMENTS:		SIZE	DWG. NO.
304 L				C	D020367-A-E sheet 3 of 3
FINISH				SCALE:	1:1 unless noted
32 RMS unless noted					

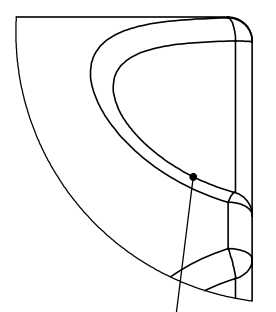
REV.	DATE	DCN #	DRAWING TREE #
A	2/9/2003		



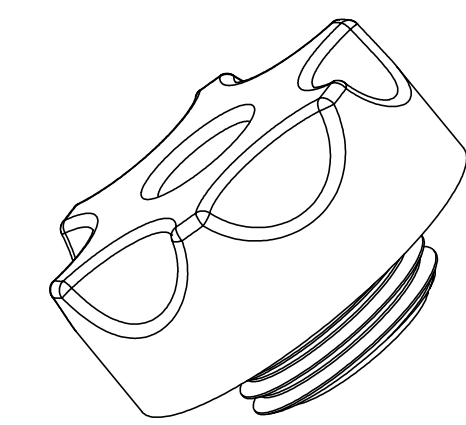
**Manifold Large Plug
D020367-2
Mat'l: 6061-T6
(1) required**



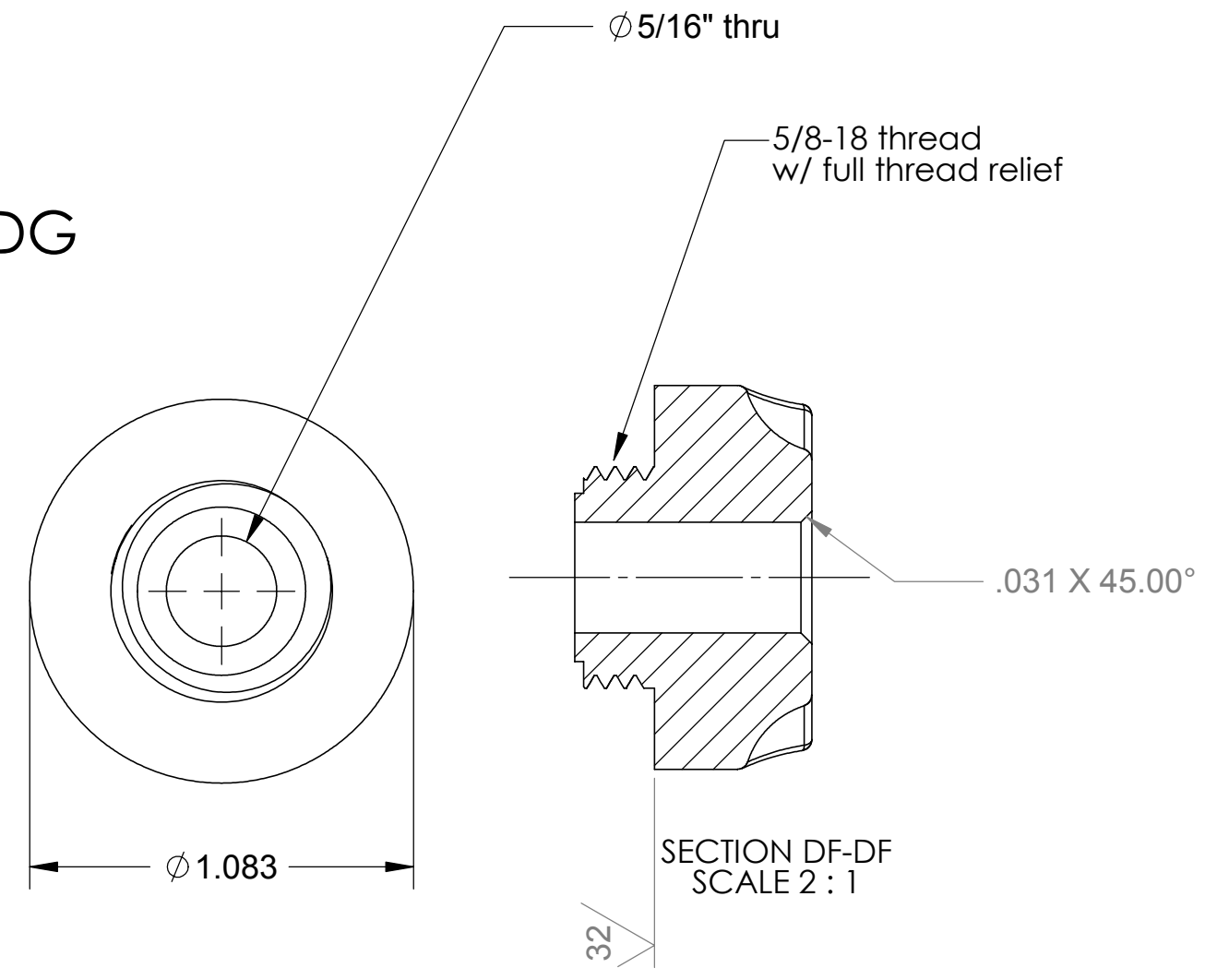
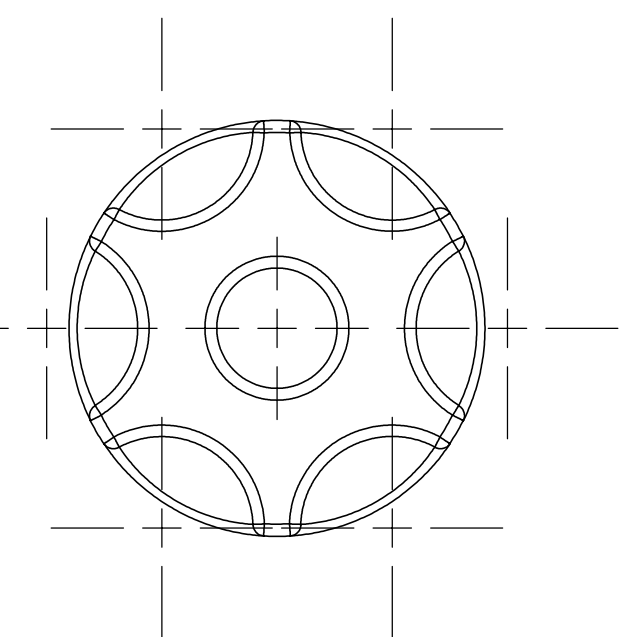
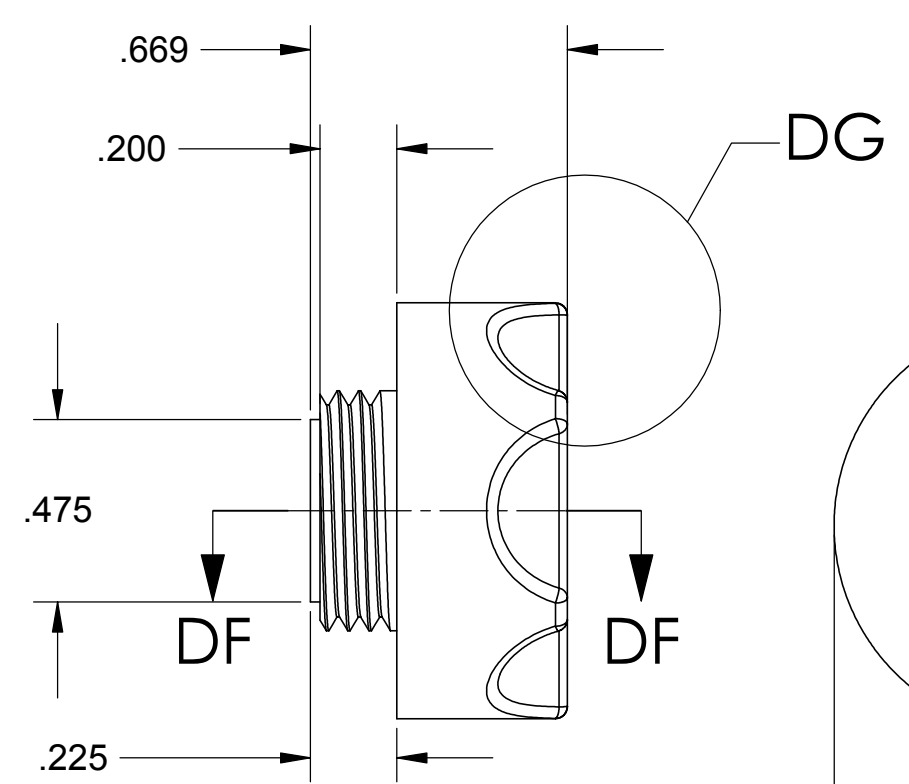
DETAIL DG
SCALE 4 : 1



Scallop for thumb screws approx. as shown with best shop practice typ for details D020367-2 and D020367-2A



**Manifold Large Plug
D020367-2A
Mat'l: 6061-T6
(1) required**



SECTION DF-DF
SCALE 2 : 1

UNLESS OTHERWISE SPECIFIED: DIMENSIONS ARE IN INCHES		DATE	NAME	CALIFORNIA INSTITUTE OF TECHNOLOGY MASSACHUSETTS INSTITUTE OF TECHNOLOGY
TOLERANCES: .XX ± 0.020"	DRAWN	4/02	Hardham	
.XXX ± 0.005"	REDRAWN	Fall 02	Hammond	
ANGULAR ± 30'	CHECKED	2/9/03	Kern	
MATERIAL	COMMENTS:			SYSTEM LASTI SUB-SYSTEM HEPI NEXT ASSY PART NAME Manifold Large Plug SIZE DWG. NO. C D020367-A-E SCALE: 1:1 unless noted
FINISH 32 RMS unless noted				REV A