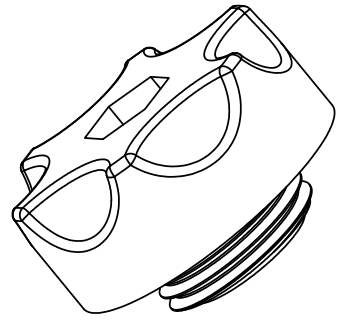
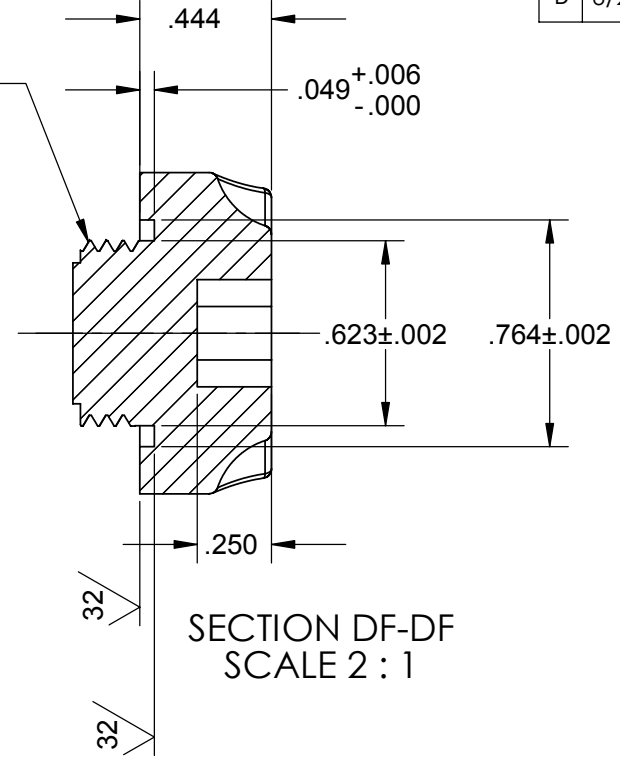
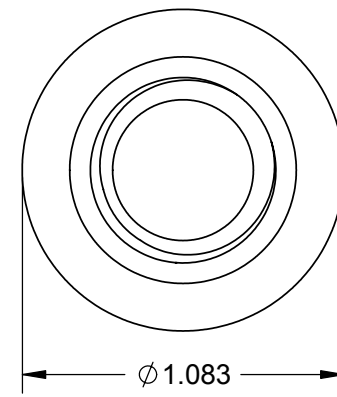
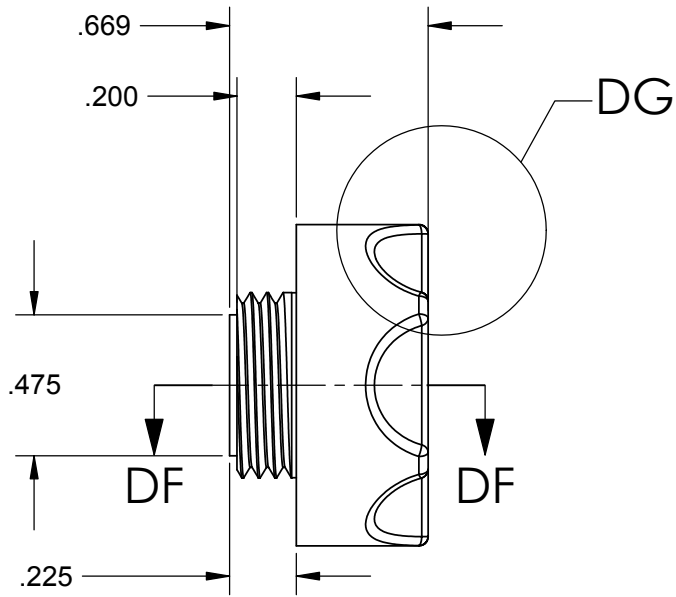


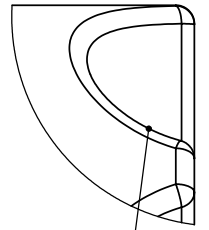
REV.	DATE	DCN #	DRAWING TREE #
A	Fall'02		
B	6/25/03	E030373-00-E	



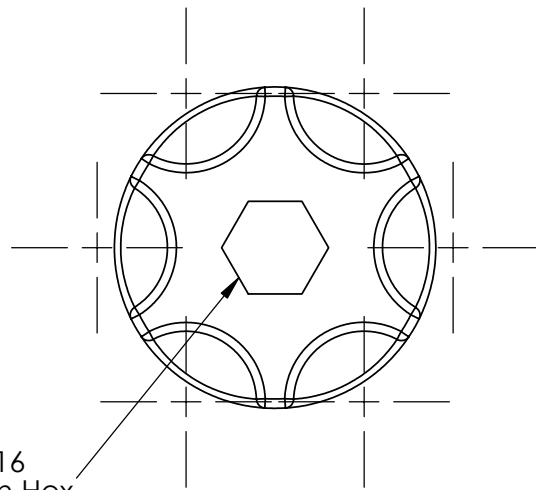
Manifold Large Plug
D020367-B-E
Mat'l: 304 L
(1) required
O-ring: #2-016



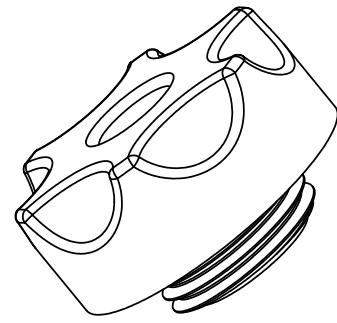
DETAIL DG
SCALE 4 : 1



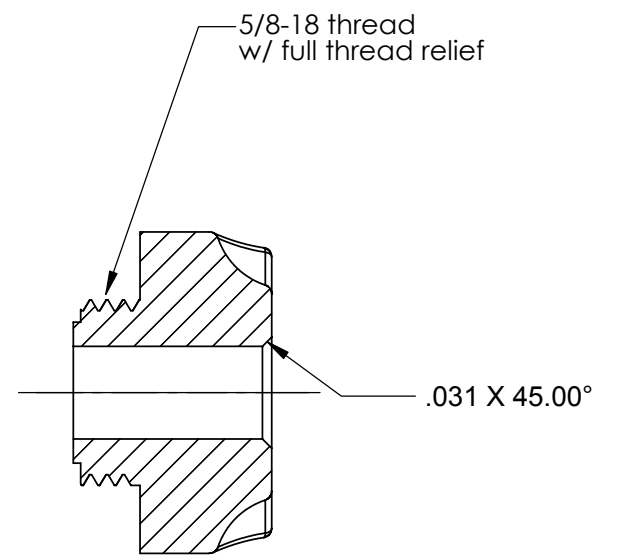
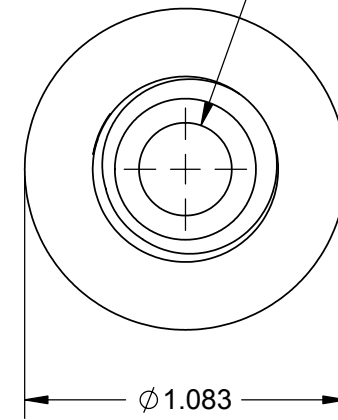
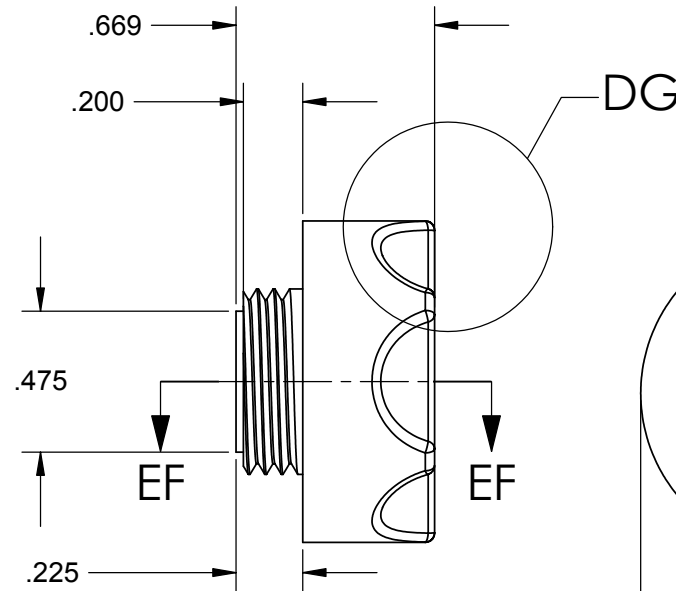
Scallop for thumb screws approx. as shown with best shop practice typ for details D020367-2 and D020367-2A



Broach for Standard 5/16 Allen Wrench Hex .250 deep



Manifold Large Plug
D020367-B-E Part 2A
Mat'l: 6061-T6
Anodize
Color: Clear
(1) required



SECTION EF-EF
SCALE 2 : 1

UNLESS OTHERWISE SPECIFIED:		DATE	NAME	CALIFORNIA INSTITUTE OF TECHNOLOGY MASSACHUSETTS INSTITUTE OF TECHNOLOGY	
DIMENSIONS ARE IN INCHES		4/02	Hardham	LIGO	
TOLERANCES:		Fall' 02	Hammond	SYSTEM LASTI	
.XX ± 0.020"		8/12/03	Spijld	SUB-SYSTEM HEPI	
.XXX ± 0.005"		2/9/03	Kern	NEXT ASSY	
ANGULAR ± 30°				PART NAME HEPI Manifold Large Plug	
MATERIAL		COMMENTS:		SIZE	DWG. NO.
FINISH 120 RMS unless noted				C	D020367
				SCALE:	1:1 unless noted
				Sht. No. 35 / 43	