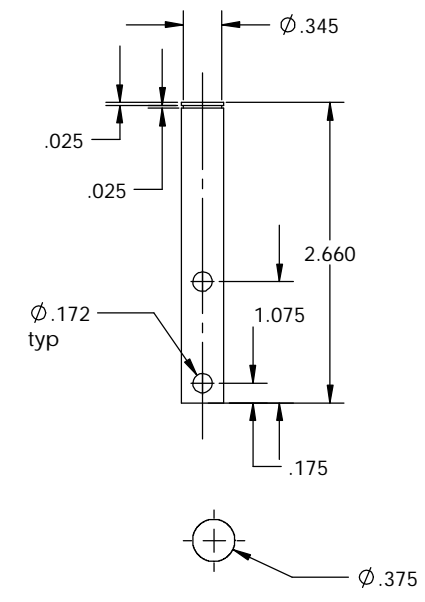
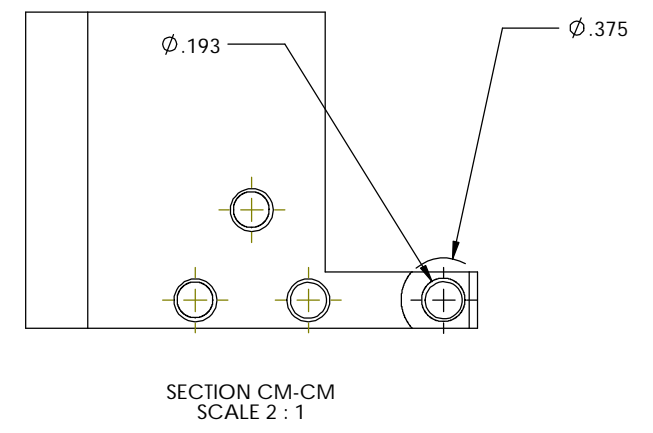
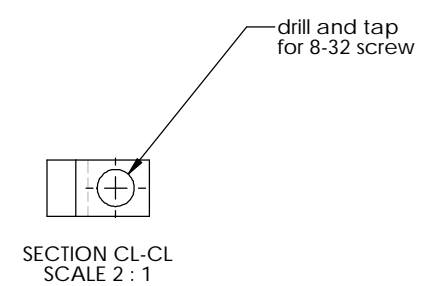
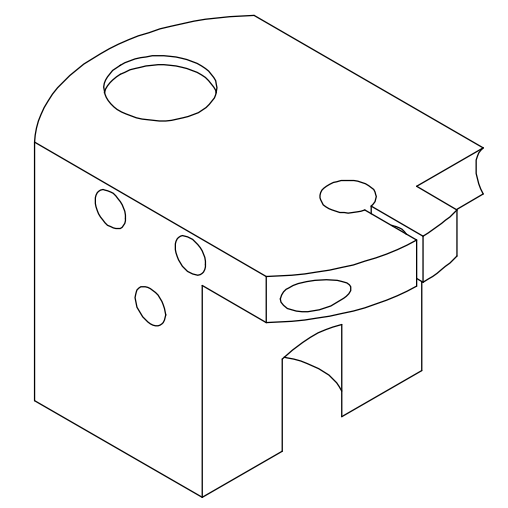
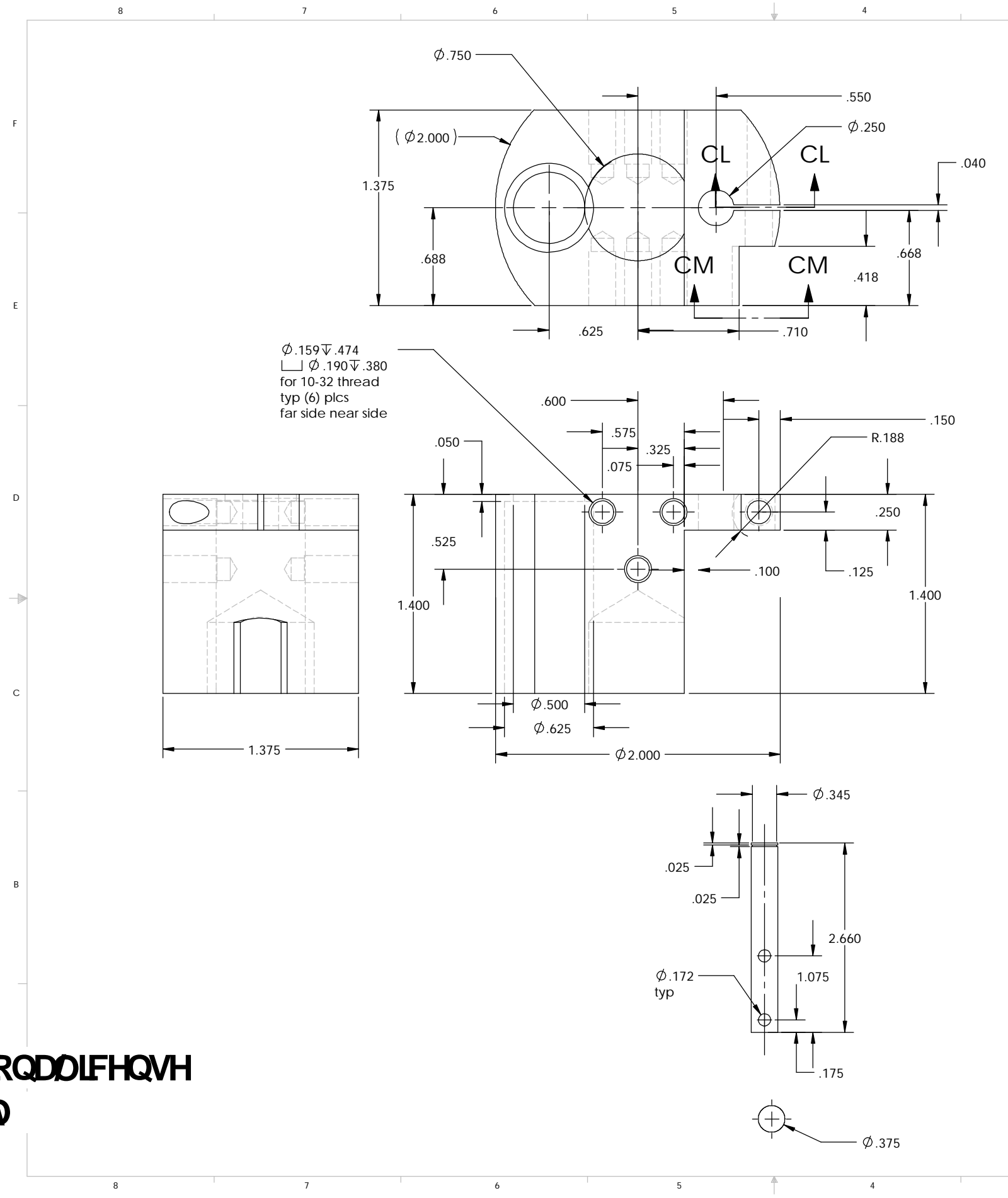


|      |      |       |                |
|------|------|-------|----------------|
| REV. | DATE | DCN # | DRAWING TREE # |
|      |      |       |                |



$\phi .159 \nabla .474$   
 $\square \phi .190 \nabla .380$   
 for 10-32 thread  
 typ (6) plcs  
 far side near side

6 RQG: RUN ( GXFDMRQDOLFHQVH  
 ,QVWKFVRQD8 VH2 QO

|                             |  |  |  |                |                   |         |  |
|-----------------------------|--|--|--|----------------|-------------------|---------|--|
| UNLESS OTHERWISE SPECIFIED: |  |  |  | DATE           |                   | NAME    |  |
| DIMENSIONS ARE IN INCHES    |  |  |  | DRAWN          | 4/02              | Hardham |  |
| TOLERANCES:                 |  |  |  | REDRAWN        | 6/22/02           | Hammond |  |
| .XX ± 0.020"                |  |  |  | CHECKED        | 6/24/02           | Ken     |  |
| .XXX ± 0.005"               |  |  |  | ANGULAR ± 30°  |                   |         |  |
| MATERIAL                    |  |  |  | COMMENTS:      |                   |         |  |
| FINISH                      |  |  |  | PART NAME      |                   |         |  |
| SCALE:                      |  |  |  | SIZE           | DWG. NO.          | REV     |  |
|                             |  |  |  | C              | LIGO-D020372-00-E |         |  |
|                             |  |  |  | SHEET 37 OF 37 |                   |         |  |

HEPI Tripod Sensor Housing and Sensor Post

CALIFORNIA INSTITUTE OF TECHNOLOGY  
 MASSACHUSETTS INSTITUTE OF TECHNOLOGY