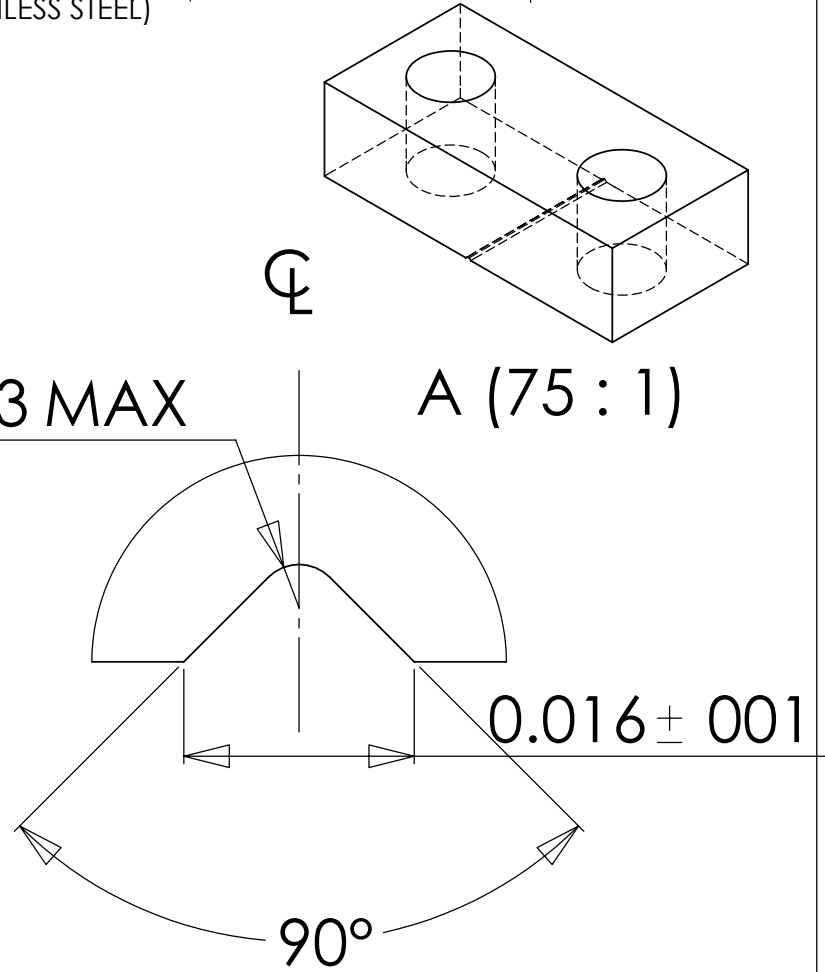
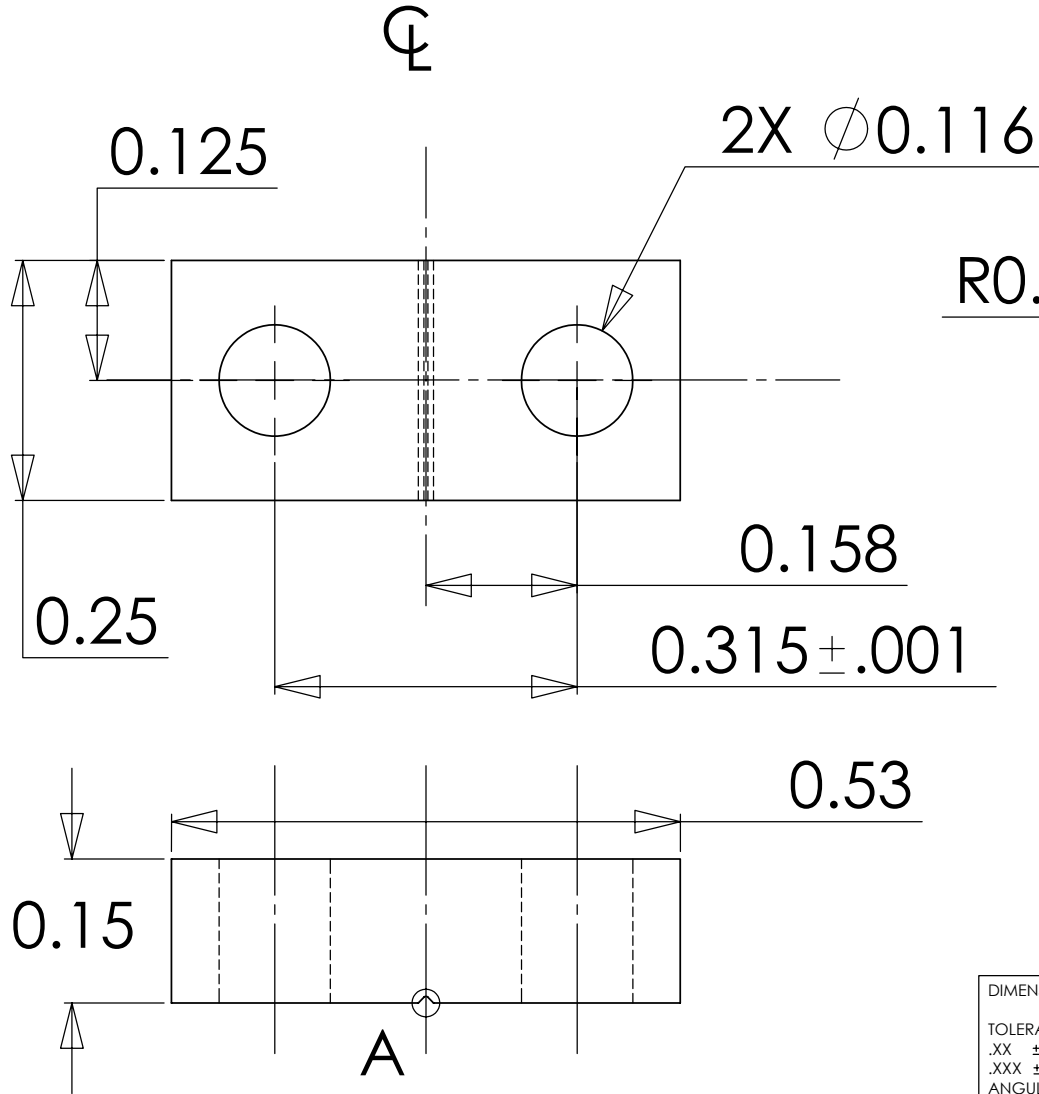


NOTES: (UNLESS OTHERWISE SPECIFIED)

1. DIMENSIONS IN INCHES

2. ALL MACHINING FLUIDS SHALL BE WATER SOLUBLE AND FREE OF SULFUR, CHLORINE AND SILICONE, SUCH AS CINCINNATI MILACRON'S CIMTECH 410 (STAINLESS STEEL)

REV.	DATE	DCN #	DRAWING TREE #



DIMENSIONS ARE IN INCHES		NAME	DATE	<b>CALIFORNIA INSTITUTE OF TECHNOLOGY MASSACHUSETTS INSTITUTE OF TECHNOLOGY</b>
TOLERANCES: .XX ±0.01 .XXX ±0.005 ANGULAR ±1°		DM	07/16	
DRAWN				SYSTEM <b>ADVANCED LIGO</b>
CHECKED				SUB-SYSTEM <b>SUS</b>
MATERIAL				NEXT ASSY <b>MC</b>
FINISH		COMMENTS:		PART NAME <b>GROOVED CLAMP .016</b>
		SIZE <b>A</b>	DWG. NO. <b>D020378-00-D</b>	REV.
		SCALE: NTS		SHEET 1 OF 1