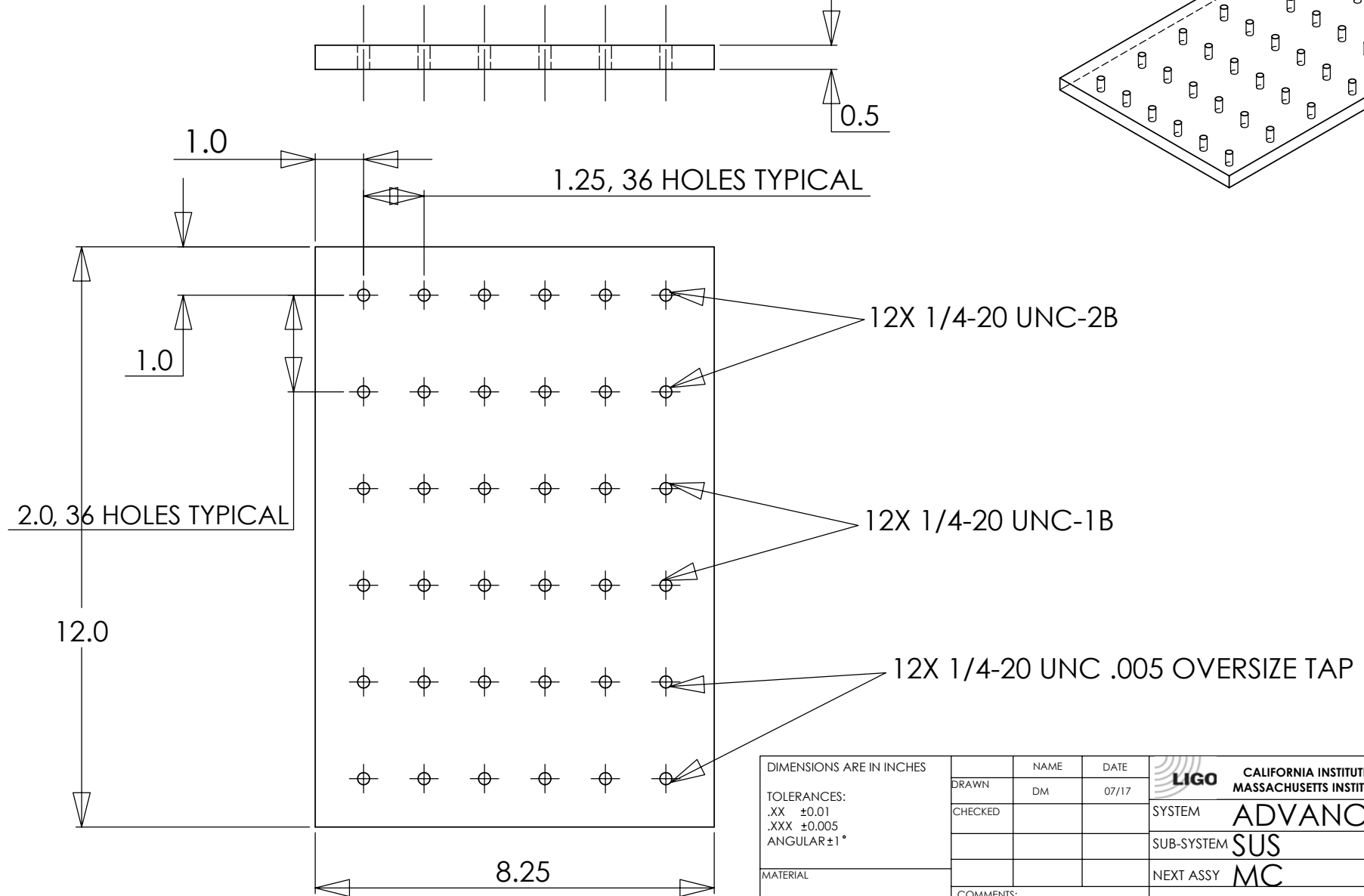
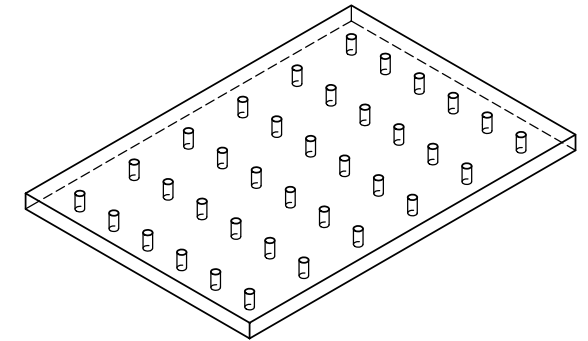


NOTES: (UNLESS OTHERWISE SPECIFIED)

1. DIMENSIONS IN INCHES
2. REMOVE ALL SHARP EDGES, R.02 MIN
3. ALL MACHINING FLUIDS SHALL BE WATER SOLUBLE AND FREE OF SULFUR, CHLORINE AND SILICONE, SUCH AS CINCINNATI MILACRON'S CIMTECH 410 (STAINLESS STEEL)
4. QUANTITY 2: ONE EACH OF MATERIALS 6061-T6-AL AND STAINLESS STEEL 300

REV.	DATE	DCN #	DRAWING TREE #



DIMENSIONS ARE IN INCHES		NAME	DATE	<b>CALIFORNIA INSTITUTE OF TECHNOLOGY</b> <b>MASSACHUSETTS INSTITUTE OF TECHNOLOGY</b>
TOLERANCES: .XX ±0.01 .XXX ±0.005 ANGULAR ±1°		DM	07/17	
DRAWN				SYSTEM <b>ADVANCED LIGO</b>
CHECKED				SUB-SYSTEM <b>SUS</b>
MATERIAL				NEXT ASSY <b>MC</b>
FINISH				PART NAME <b>COLD-WELDING PLATE 1/4</b>
COMMENTS:				SIZE <b>A</b> DWG. NO. <b>D02083-00-D</b> REV. <b> </b>
				SCALE: NTS SHEET 1 OF 1