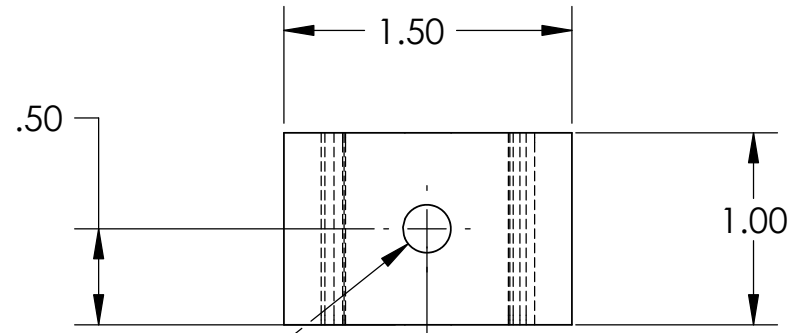


NOTES: (UNLESS OTHERWISE SPECIFIED)
 1. DIMENSIONS IN INCHES.
 2. BREAK ALL SHARP EDEGS.
 3. ALL MACHINING FLUIDS SHALL BE WATER SOLUBLE AND FREE OF SULFUR, CHLORINE AND SILICONE, SUCH AS CINCINNATI MILACRON'S CIMTECH 410 (STAINLESS STEEL.)

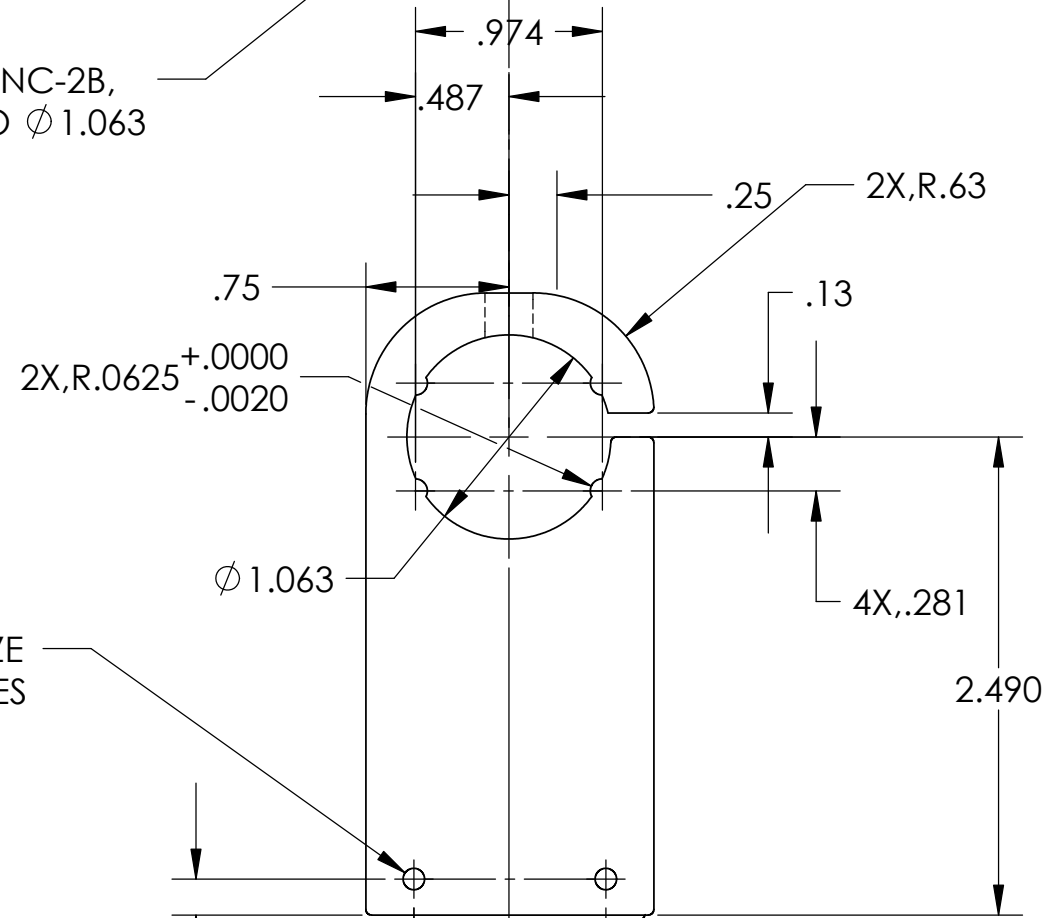
REV.	DATE	DCN #	DRAWING TREE #
A	7/04	E040303-00	E030507-A



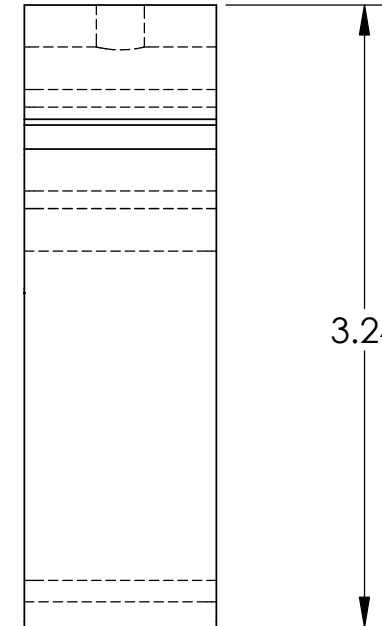
D020417_LIGO1_SENSORACTUATOR_BRACKET.step




1/4-20UNC-2B,
 THRU TO ϕ 1.063



2X 4-40 .005" OVERSIZE
 ∇ .38 MIN., BOTH SIDES



ITEM NO.	REQ.	SPARE	TOT.	PART NUMBER	DESCRIPTION	SUPPLIER
	QUANTITY					
UNLESS OTHERWISE SPECIFIED: DIMENSIONS ARE IN INCHES						
TOLERANCES: .XX \pm 0.01 .XXX \pm 0.005 ANGULAR: \pm 0.5 DEG.				DATE	NAME	 CALIFORNIA INSTITUTE OF TECHNOLOGY MASSACHUSETTS INSTITUTE OF TECHNOLOGY
MATERIAL 6061-T6 ALUM.				8/02	J.Romie	
FINISH NONE				COMMENTS:		SYSTEM: ADVANCED LIGO SUB-SYSTEM: SUSPENSIONS NEXT ASSY: MC SUSPENSION PART NAME: SENSOR/ACTUATOR BRACKET,LIGO1
SIZE B		DWG. NO. D020417			REV A	
SCALE: N/A					SHEET 1 OF 1	