

NOTES: (UNLESS OTHERWISE SPECIFIED)

1. DIMENSIONS IN INCHES

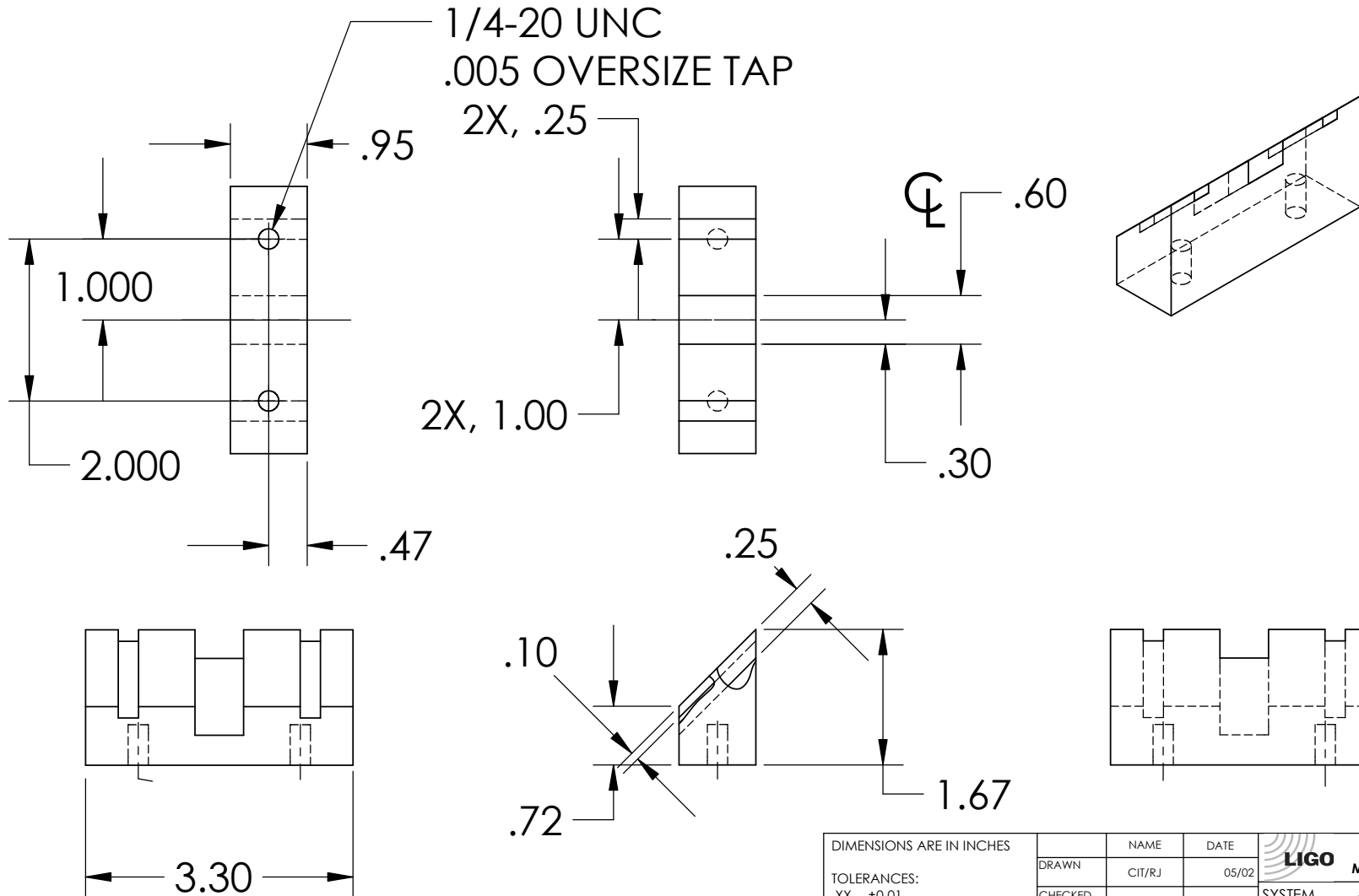
2. REMOVE ALL SHARP EDGES, R.02 MIN


3. ALL MACHINING FLUIDS SHALL BE WATER SOLUBLE AND FREE OF SULFUR, CHLORINE AND SILICONE, SUCH AS CINCINNATI MILACRON'S CIMTECH 410 (STAINLESS STEEL)

REV.	DATE		
A	24TH JUNE 2004	ED40303-00	



D020445\_Vclamp\_for\_barcatcher.step



DIMENSIONS ARE IN INCHES		NAME	DATE	 <b>CALIFORNIA INSTITUTE OF TECHNOLOGY MASSACHUSETTS INSTITUTE OF TECHNOLOGY</b>
TOLERANCES: .XX ±0.01 .XXX ±0.005 ANGULAR ±1°		DRAWN CIT/RJ	05/02	
MATERIAL <b>6061-T6-AL</b>		CHECKED		SYSTEM <b>ADVANCED LIGO</b>
FINISH				SUB-SYSTEM <b>SUS</b>
				NEXT ASSY <b>MC: WIRE JIG</b>
COMMENTS:				PART NAME V-CLAMP FOR CATCHER BAR
		SIZE <b>A</b>	DWG. NO. <b>D020445</b>	REV. <b>A</b>
		SCALE: NTS		SHEET 1 OF 1