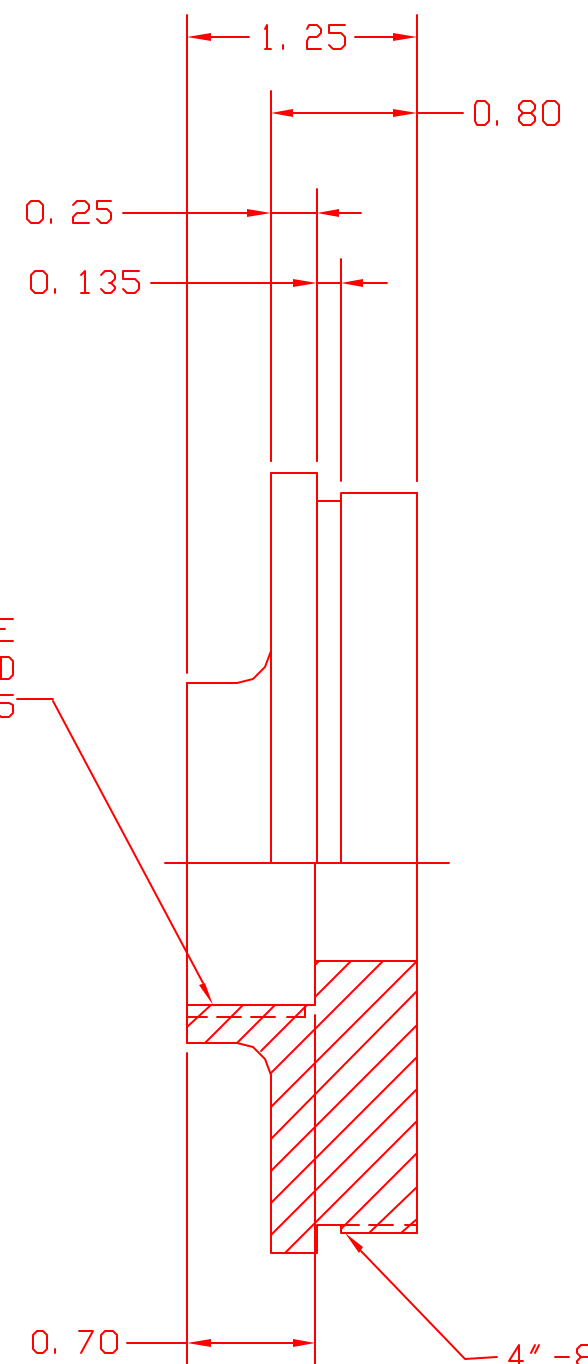


MATERIAL: TYPE 6061-T6 ALUMINUM
 ALL DIMENSIONS ARE IN INCHES
 BREAK ALL SHARP EDGES
 TOLERANCES: X, XX: +/- 0.030
 X, XXX: +/- 0.005

1.670-6 ACME
 INTERNAL THREAD
 MINOR DIA 1.565



4"-8 ACME THREAD
 MAJOR DIA 4.000-3.994
 PITCH DIA 3.922-3.899
 MINOR DIA 3.865-3.831
 WITH O-RING GROOVE

D020451-00-D DESICCANT CANNISTER CAP
 DRY ENTRY TASK
 L JONES
 LIGO PROJECT
 9/27/02