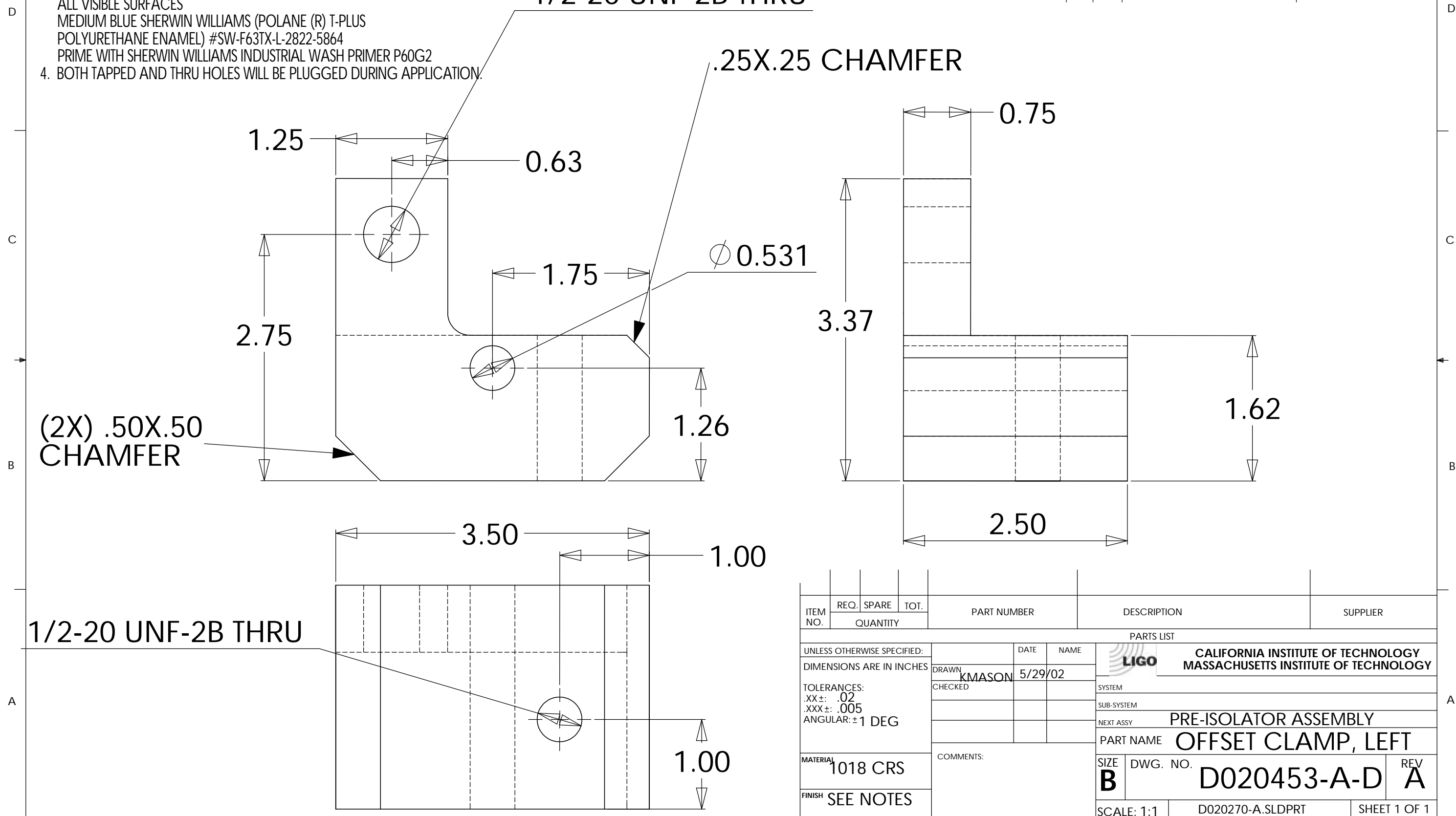


NOTES: UNLESS OTHERWISE SPECIFIED

1. REMOVE ALL BURRS AND BREAK SHARP EDGES TO A MAXIMUM OF .015
2. PART NUMBER (DRAWING NO., DASH NO., REVISION NO., SERIAL NO.) TO BE CLEARLY MARKED ON THE PART ITSELF
3. PAINT:
ALL VISIBLE SURFACES
MEDIUM BLUE SHERWIN WILLIAMS (POLANE (R) T-PLUS POLYURETHANE ENAMEL) #SW-F63TX-L-2822-5864
PRIME WITH SHERWIN WILLIAMS INDUSTRIAL WASH PRIMER P60G2
4. BOTH TAPPED AND THRU HOLES WILL BE PLUGGED DURING APPLICATION.

REV.	DATE	DCN #	DRAWING TREE #



ITEM NO.	REQ.	SPARE	TOT.	PART NUMBER	DESCRIPTION	SUPPLIER
PARTS LIST						
UNLESS OTHERWISE SPECIFIED: DIMENSIONS ARE IN INCHES				DATE	NAME	CALIFORNIA INSTITUTE OF TECHNOLOGY MASSACHUSETTS INSTITUTE OF TECHNOLOGY
TOLERANCES: .XX ±: .02 .XXX ±: .005 ANGULAR: ± 1 DEG				5/29/02	KMASON	
MATERIAL				COMMENTS:		SYSTEM
1018 CRS						SUB-SYSTEM
FINISH						NEXT ASSY
SEE NOTES						PRE-ISOLATOR ASSEMBLY
						PART NAME
						OFFSET CLAMP, LEFT
				SIZE	DWG. NO.	REV
				B	D020453-A-D	A
				SCALE: 1:1	D020270-A.SLDPRT	SHEET 1 OF 1