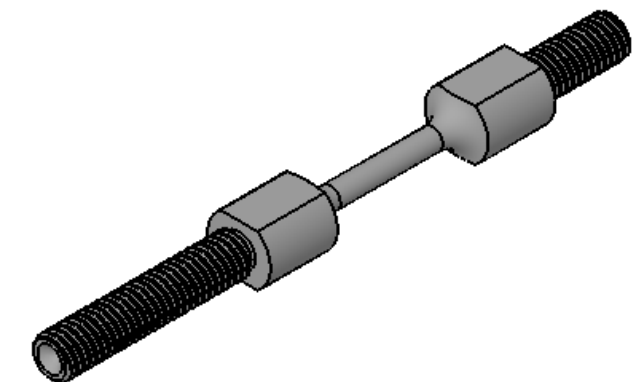
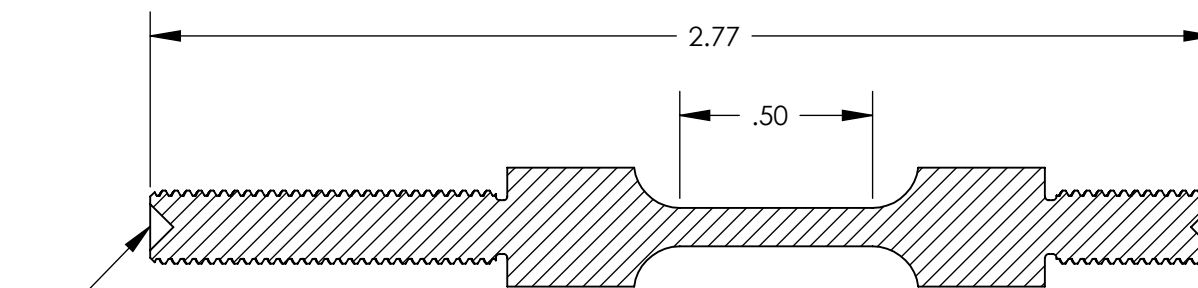
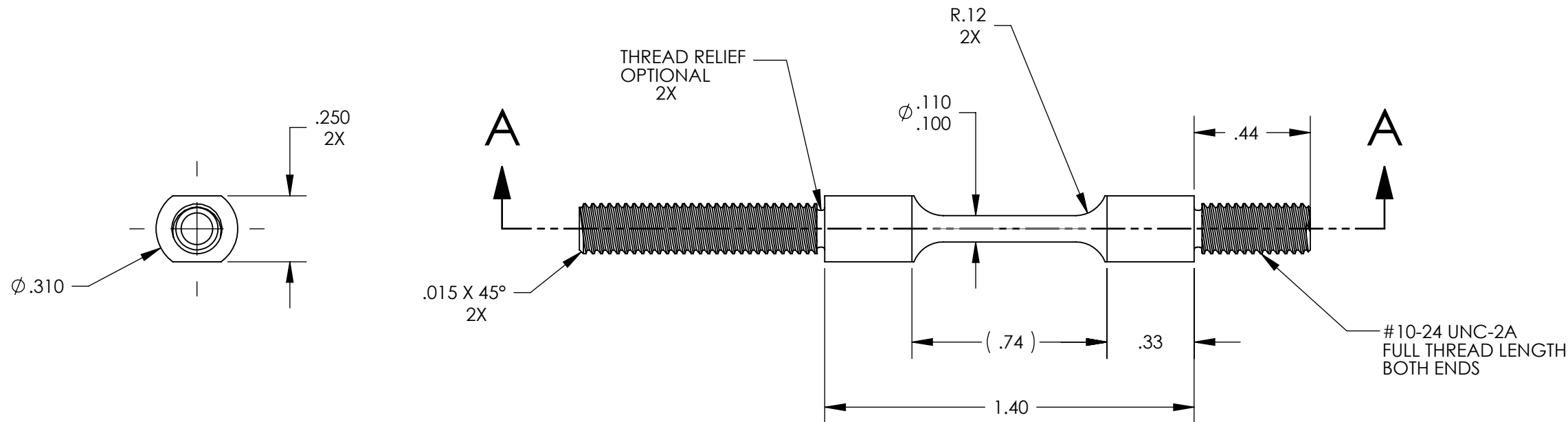


NOTES CONTINUED:

- 5. SCRIBE, ENGRAVE, OR MECHANICALLY STAMP (NO INKS OR DYES) DRAWING PART NUMBER, REVISION (AND VARIANT OR "TYPE" IF APPLICABLE) ON NOTED SURFACE OF PART FOLLOWED NEXT LINE WITH A THREE DIGIT SERIAL NUMBER. SERIAL NUMBERS START AT 001 FOR THE FIRST ARTICLE AND PROCEED CONSECUTIVELY. USE MINIMUM 0.12" HIGH CHARACTERS. UNLESS THE SIZE OF THE PART DICTATES SMALLER CHARACTERS. A VIBRATORY TOOL MAY BE USED.
- FOR SMALL PARTS BAG AND TAG PARTS WITH THEIR DRAWING PART NUMBER, REVISION VARIANT OR "TYPE" (IF APPLICABLE), AND QUANTITY.  
EXAMPLE: DXXXXX-VY, TYPE-XX, S/N XXX
- 6. APPROXIMATE WEIGHT=0.025 LB.
- 7. MACHINE ALL SURFACES TO REMOVE OXIDES AND MILL FINISH, USE OF ABRASIVE REMOVAL TECHNIQUES IS NOT ALLOWED. REFER TO LIGO-E0900364
- 8. ALL PARTS SHALL BE MANUFACTURED IN ACCORDANCE WITH LIGO SPECIFICATION E0900364.
- 9. ALL MATERIAL IS TO BE VIRGIN MATERIAL (i.e. NO WELD REPAIRS, PLUGS OR RECYCLED MATERIAL). NO REPAIRS SHALL BE MADE UNLESS APPROVED IN ADVANCE, AND IN WRITING, BY LIGO LABORATORY. REFER TO LIGO-E0900364.

REV.	DATE	DCN #	DRAWING TREE #
v1	18 OCT 2010	E1000285	-
v2	04 APR 2011	E1100216	-
v3	23 AUG 2011	E1100335	-



ISO VIEW FOR REFERENCE ONLY

NOTES AND TOLERANCES: (UNLESS OTHERWISE SPECIFIED)				LIGO CALIFORNIA INSTITUTE OF TECHNOLOGY MASSACHUSETTS INSTITUTE OF TECHNOLOGY		PART NAME	
DIMENSIONS ARE IN INCHES TOLERANCES: .XX ± .01 .XXX ± .005 ANGULAR ± 0.5°				1. INTERPRET DRAWING PER ASME Y14.5-1994. 2. REMOVE ALL SHARP EDGES 0.005" TO 0.015". 3. DO NOT SCALE FROM DRAWING. 4. ALL MACHINING FLUIDS MUST BE FULLY SYNTHETIC, FULLY WATER SOLUBLE AND FREE OF SULFUR, SILICONE, AND CHLORINE. REFER TO LIGO E0900237 FOR LIST OF APPROVED COOLANTS.		SLC ACB SUSPENSION ROD	
MATERIAL		FINISH		SYSTEM		SUB-SYSTEM	
316 SSSL		63 μinch		ADVANCED LIGO		AOS	
NEXT ASSY				DESIGNER		DATE	
D1001005				N.Nguyen		01 SEP 2010	
SCALE: 2:1				DRAFTER		DATE	
PROJECTION:				TQ. NGUYEN		18 OCT 2010	
SHEET 1 OF 1				CHECKER		DATE	
DRAWING NO.				M. SMITH		01 NOV 2010	
D1002340				APPROVAL		DATE	
REV. v3				D. COYNE		10 NOV 2010	

D1002340\_AdlIGO\_AOS\_SLC Suspension Rod, PART PDM REV: X-007, DRAWING PDM REV: X-021