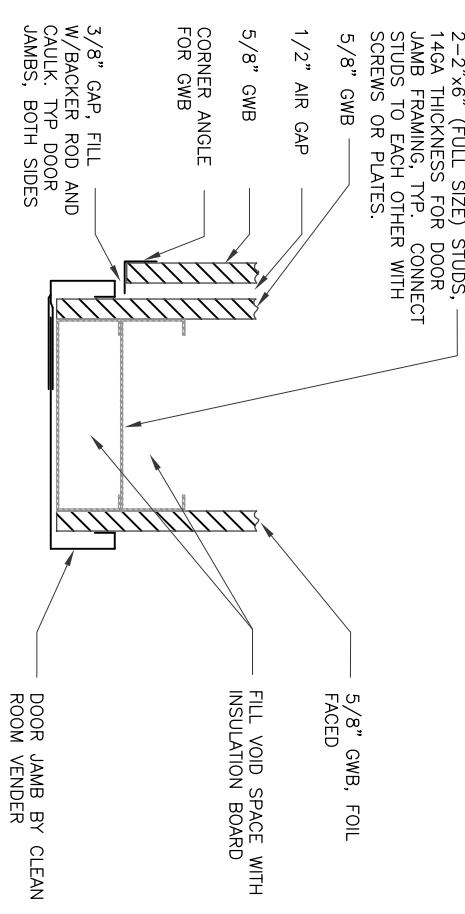
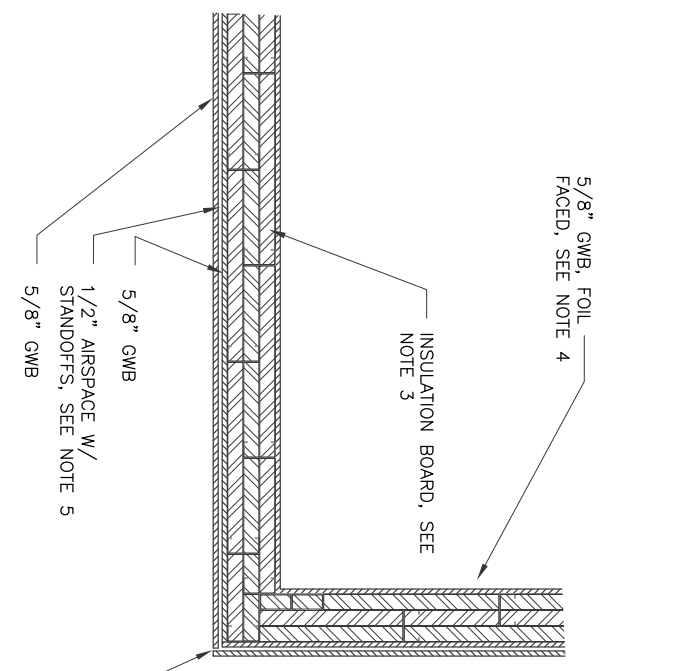
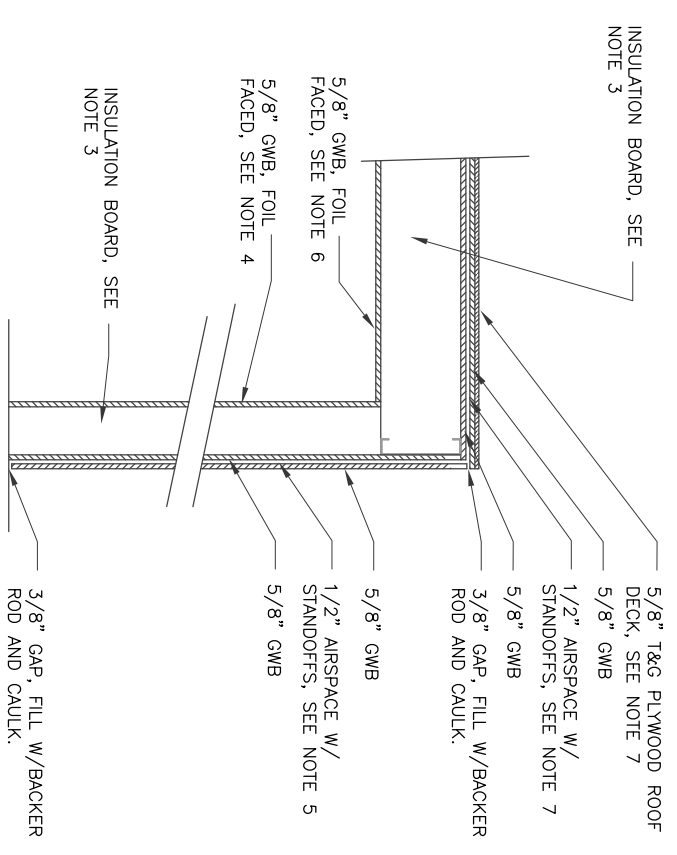


- NOTES:
1. WALLS TO BE OFFSET 2"x4" (ACTUAL SIZE) STEEL STUD WALLS. STUD SPAN, CENTER TO CENTER ON INTERIOR AND EXTERIOR WALLS, SHALL NOT EXCEED 24".
 2. SPACE STUDS AS SHOWN TO ACCOMMODATE 4" PVC PIPE SLEEVES (4.5"OD) AT EXACT LOCATIONS SHOWN. SLEEVES SHALL BE INSTALLED WITH FLOATING SEAL (CAULK) AROUND OUTER CIRCUMFERENCE.
 3. INSTALL THREE LAYERS OF 2" RIGID INSULATING BOARD, KNAUF 703 FIBERGLASS BOARD, OR APPROVED EQUAL. IN FRAMING, FULLY INSERT INSULATING BOARD INTO FRAMING STUD. ROOF JOISTS REQUIRE FIVE LAYERS TO FILL 10" DEPTH.
 4. INTERIOR WALLS SHALL BE ONE SHEET 5/8" GWB, FOIL FACED TO THE INTERIOR OF THE ROOM.
 5. EXTERIOR WALLS SHALL BE ONE SHEET 5/8" GWB, 1/2" AIR GAP USING STANDOFF CHANNEL, DIETRICH METAL FRAMING, INC. RCDN-STC (25 GA), ONE SHEET 5/8" GWB. PAINT EXTERIOR WALLS WITH 2 COATS OF WHITE SATIN FINISH LATEX.
 6. INTERIOR CEILING SHALL BE ONE SHEET 5/8" GWB, FOIL FACED TO THE INTERIOR OF THE ROOM.
 7. ROOF SHALL BE ONE SHEET 5/8" GWB, 1/2" AIR GAP USING STANDOFF CHANNEL, DIETRICH METAL FRAMING, INC. RCDN-STC (20 GA), ONE SHEET 5/8" GWB, ONE SHEET 5/8" T&G PLYWOOD, EPOXY PAINTED.

FRAMING PLAN
SCALE: 1/2" = 1'-0"



1 LAE WALL/CLG JOINT DETAIL
SCALE: 1" = 1'-0"

2 LAE FRAMING/INSULATION DETAIL
SCALE: 1" = 1'-0"

3 DOOR JAMB DETAIL
SCALE: 2" = 1'-0"

REV No	DATE	BY	DESCRIPTION	APPROVED
v2	11/3/10	GLH	EDIT NOTE 1, ADD/UPDATE DIMENSIONS	
v3	1/18/11	GLH	ADD DOOR JAMB DETAIL, EDIT NOTE 5	
v4	1/19/11	GLH	MODIFY DETAIL 3, DOOR JAMB	
v5	2/3/11	GLH	MODIFY NOTES 5 & 7, DETAIL 3, AND 4" PVC CONDUIT LOCATION AND LENGTH	

© 2011 Hibbs Engineering, Inc.	
DRAWN BY: GLH	DESIGN GM
CHECKED BY:	DESIGN GM
DESIGN A/E	DESIGN GM
HEI APPROVAL	

L1 LASER AREA ENCLOSURE ROOM LAYOUT/FRAMING PLAN	
PROJECT NUMBER: 1036.01	CAD FILE: 1036L1V5

CALIFORNIA INSTITUTE OF TECHNOLOGY LIGO LIVINGSTON OBSERVATORY	
HIBBS ENGINEERING, INC. KENNEWICK, WASHINGTON	
DRAWING NUMBER: 2394	REV: v5