

NOTES: (UNLESS OTHERWISE SPECIFIED)

1. DIMENSIONS IN INCHES

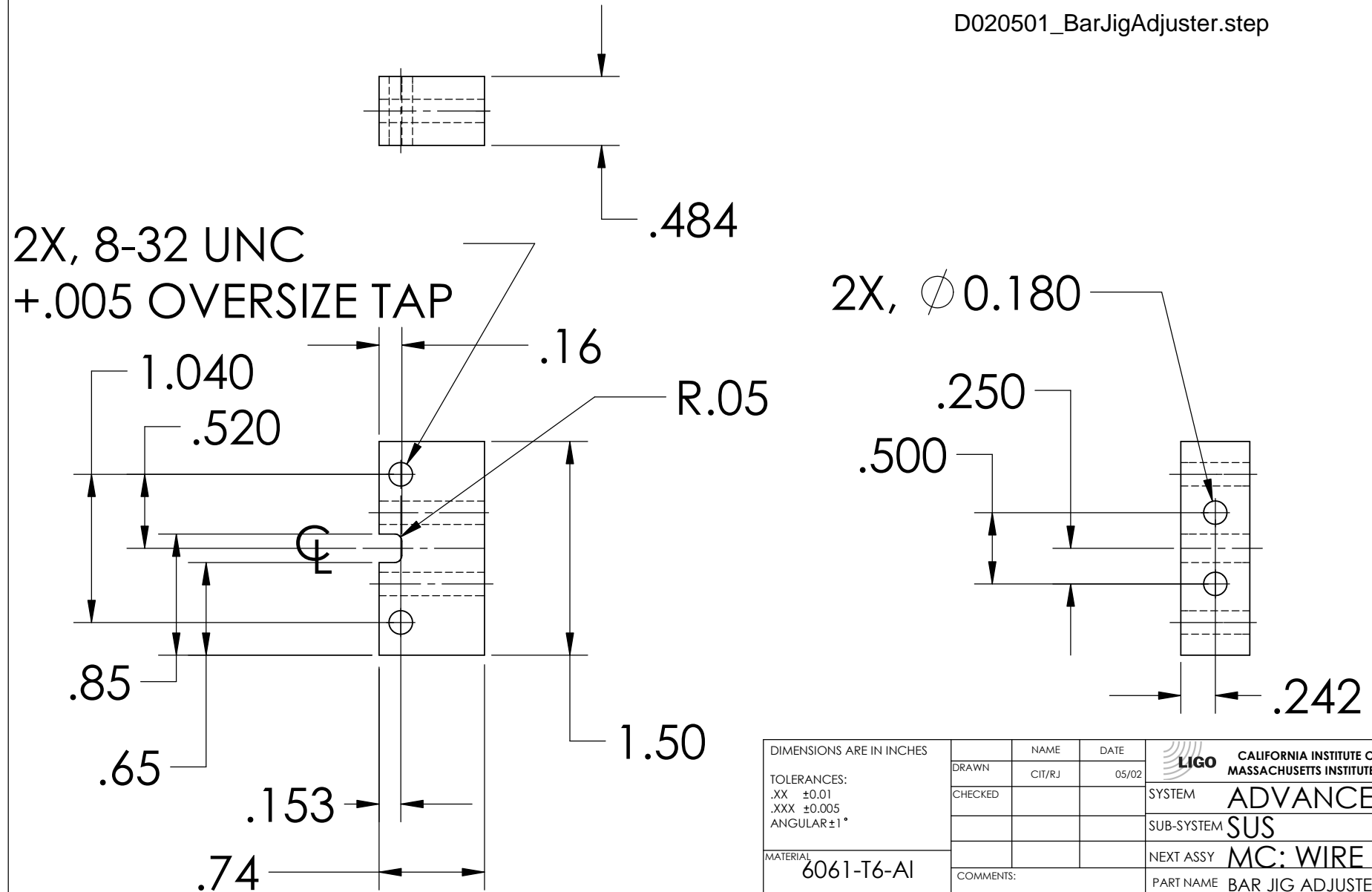
2. REMOVE ALL SHARP EDGES, R.02 MIN

3. ALL MACHINING FLUIDS SHALL BE WATER SOLUBLE AND FREE OF SULFUR, CHLORINE AND SILICONE, SUCH AS CINCINNATI MILACRON'S CIMTECH 410 (STAINLESS STEEL)

REV.	DATE	DCN #	DRAWING TREE #
A	24TH JUNE 2004	E040303-00	



D020501_BarJigAdjuster.step



2X, 8-32 UNC
+.005 OVERSIZE TAP

2X, \varnothing 0.180

DIMENSIONS ARE IN INCHES		NAME	DATE	CALIFORNIA INSTITUTE OF TECHNOLOGY MASSACHUSETTS INSTITUTE OF TECHNOLOGY
TOLERANCES: .XX ±0.01 .XXX ±0.005 ANGULAR ±1°		CIT/RJ	05/02	
DRAWN				SYSTEM ADVANCED LIGO
CHECKED				SUB-SYSTEM SUS
MATERIAL	6061-T6-Al			NEXT ASSY MC: WIRE JIG
FINISH		COMMENTS:		PART NAME BAR JIG ADJUSTER BLOCK
		SIZE	DWG. NO.	REV.
		A	D020501	A
		SCALE: NTS		SHEET 1 OF 1