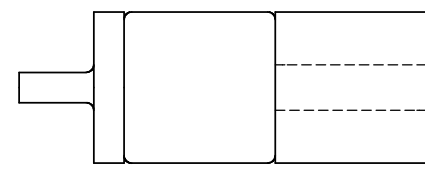
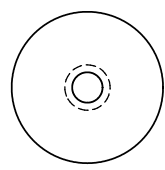
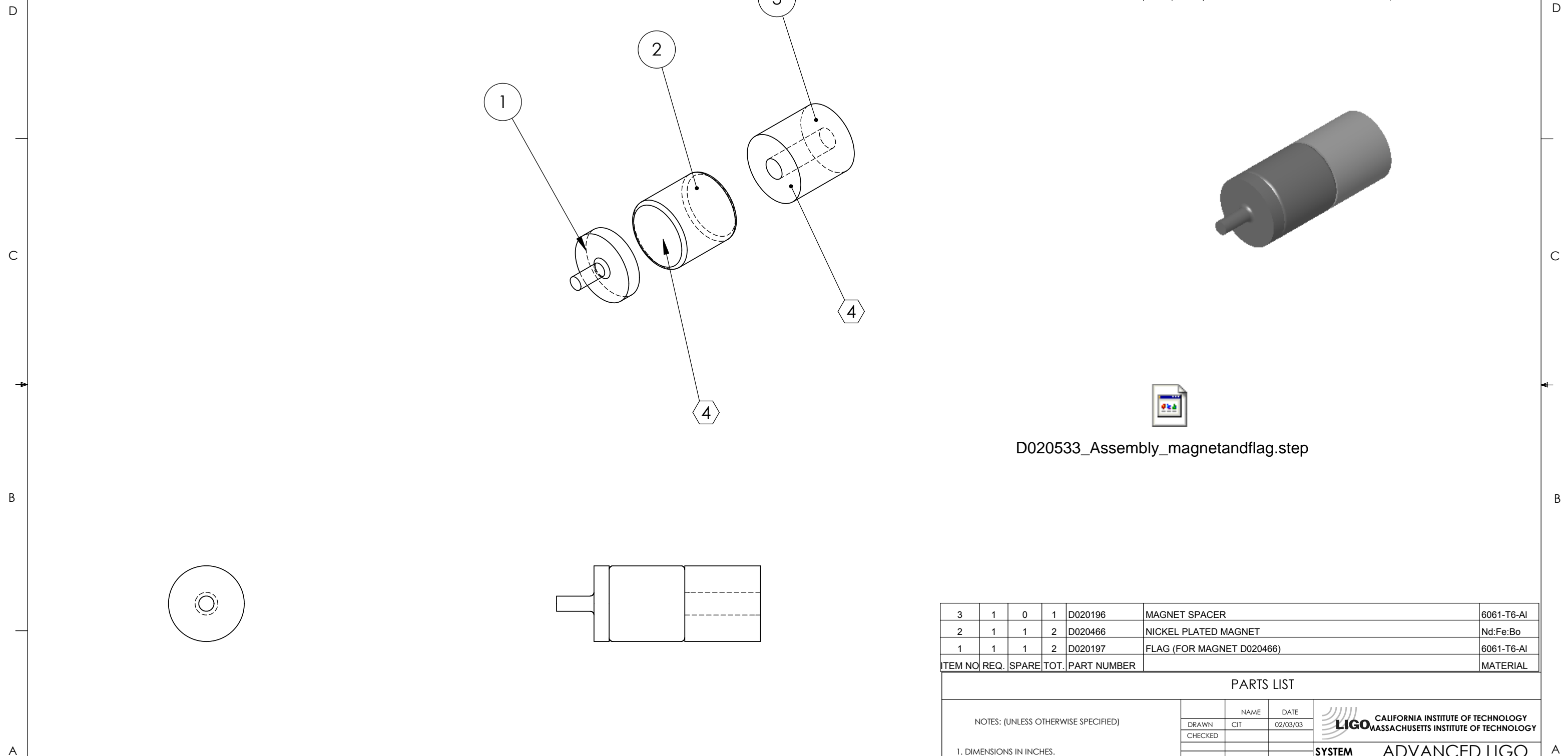


8 7 6 5 4 3 2 1

REV.	DATE	DCN #	DRAWING TREE #
A	24 JUNE 2004	E040303-00	



ITEM NO	REQ.	SPARE	TOT.	PART NUMBER		MATERIAL
3	1	0	1	D020196	MAGNET SPACER	6061-T6-Al
2	1	1	2	D020466	NICKEL PLATED MAGNET	Nd:Fe:Bo
1	1	1	2	D020197	FLAG (FOR MAGNET D020466)	6061-T6-Al

PARTS LIST

NOTES: (UNLESS OTHERWISE SPECIFIED) 1. DIMENSIONS IN INCHES. 2. REMOVE ALL SHARP EDGES, R.02 MIN. 3. ALL MACHINING FLUIDS SHALL BE WATER SOLUBLE AND FREE OF SULFUR, CHLORINE AND SILICONE, SUCH AS CINCINNATI MILACRON'S CIMTECH 410 (STAINLESS STEEL) ④ THE MAGNET, FLAG AND BRIDGE ARE BONDED TOGETHER USING VACSEAL, PRIOR TO BONDING THE SURFACES ARE SANDED WITH 600 GRIT SAND PAPER	DRAWN CHECKED	NAME CIT	DATE 02/03/03	CALIFORNIA INSTITUTE OF TECHNOLOGY MASSACHUSETTS INSTITUTE OF TECHNOLOGY
	DIMENSIONS ARE IN INCHES TOLERANCES: .XX ± 0.01 .XXX ± 0.005		SYSTEM ADVANCED LIGO	
	ANGULAR ± 0.5 °		SUB-SYSTEM SUS	
	MATERIAL		NEXT ASSY MC: UPPER MASS	
FINISH		PART NAME ASSEMBLY MAGNET AND FLAG		SHEET 1 OF 1 FILE NAME/LOCATION:
SIZE A		DWG. NO. D020533		

8 7 6 5 4 3 2 1