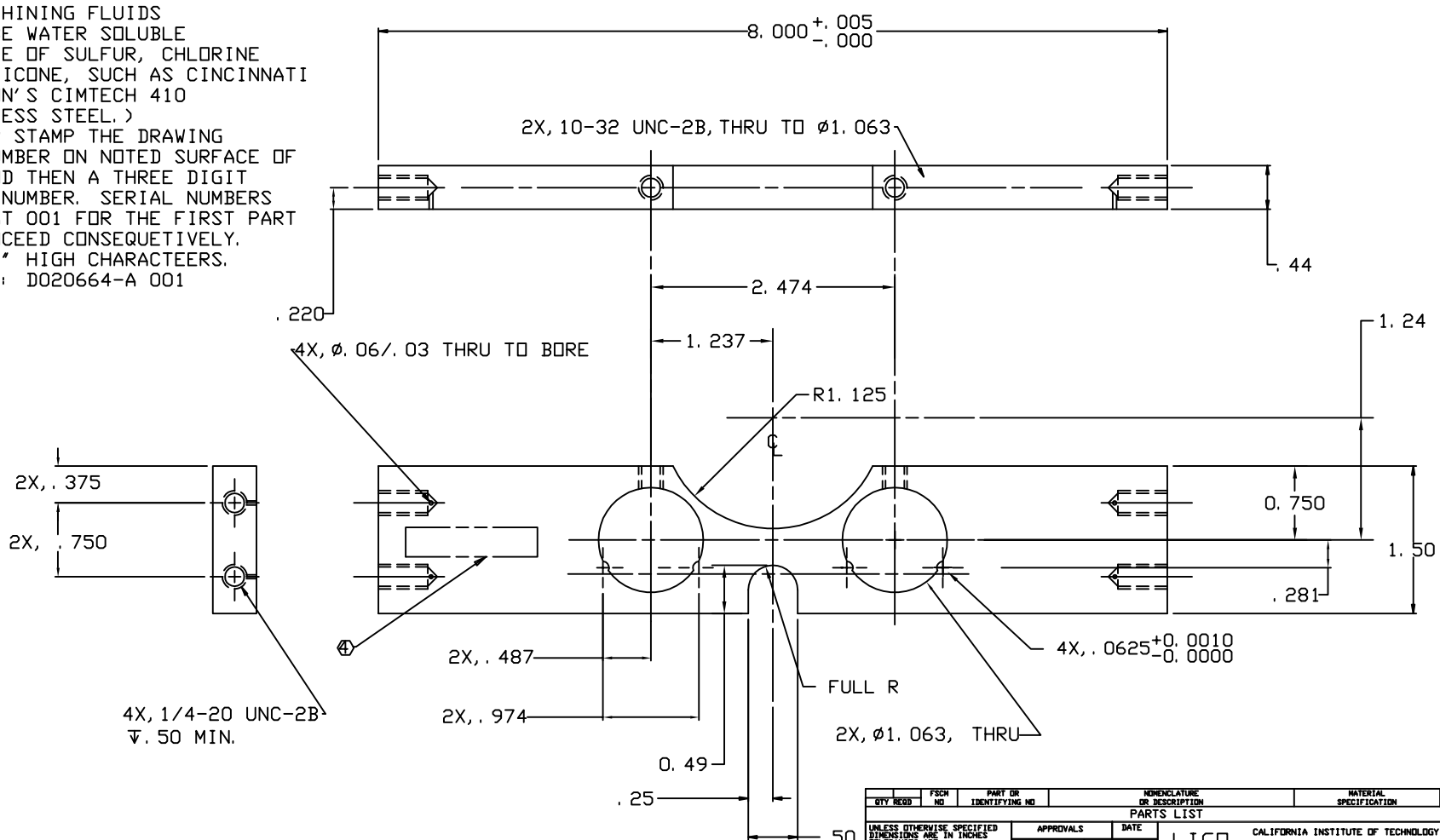


NOTES: (UNLESS OTHERWISE SPECIFIED)

1. DIMENSIONS IN INCHES.
 2. BREAK ALL SHAPR EDGES.
 3. ALL MACHINING FLUIDS SHALL BE WATER SOLUBLE AND FREE OF SULFUR, CHLORINE AND SILICONE, SUCH AS CINCINNATI MILACRON'S CIMTECH 410 (STAINLESS STEEL.)
- ④ ETCH OR STAMP THE DRAWING PART NUMBER ON NOTED SURFACE OF PART AND THEN A THREE DIGIT SERIAL NUMBER. SERIAL NUMBERS START AT 001 FOR THE FIRST PART AND PROCEED CONSEQUETIVELY. USE .07" HIGH CHARACTEERS. EXAMPLE: D020664-A 001

REV	DATE	DRAWN BY	CHECKED	DCC	DCR/DESCRIPTION
A	9/03	J. ROMIE			E030462/INITIAL RELEASE



QTY REQD	FSCH NO	PART OR IDENTIFYING NO	NOMENCLATURE OR DESCRIPTION	MATERIAL SPECIFICATION	ITEM NO
			PARTS LIST		
UNLESS OTHERWISE SPECIFIED DIMENSIONS ARE IN INCHES TOLERANCES ARE			APPROVALS DATE		
FRACTIONS DECIMALS			DRAWN J. ROMIE 11/02		
0. XX=±0.01			CHECKED		
0. XXX=±0.005					
ANGLES=±0.5°					
DO NOT SCALE DRAWING			TITLE		
MATERIAL			LIGO CALIFORNIA INSTITUTE OF TECHNOLOGY MASSACHUSETTS INSTITUTE OF TECHNOLOGY		
300 SERIES SST			GIN GIN ITM HEAD HOLDER, BOTTOM		
FINISH			DWG NO. D020664		
NEXT ASSEMBLY D020662			SCALE 1/1		
FILE LOCATION /home/dcc/docs/3020664.pdf			SHEET 1 OF 1		

A
B
C
D

A
B
C
D