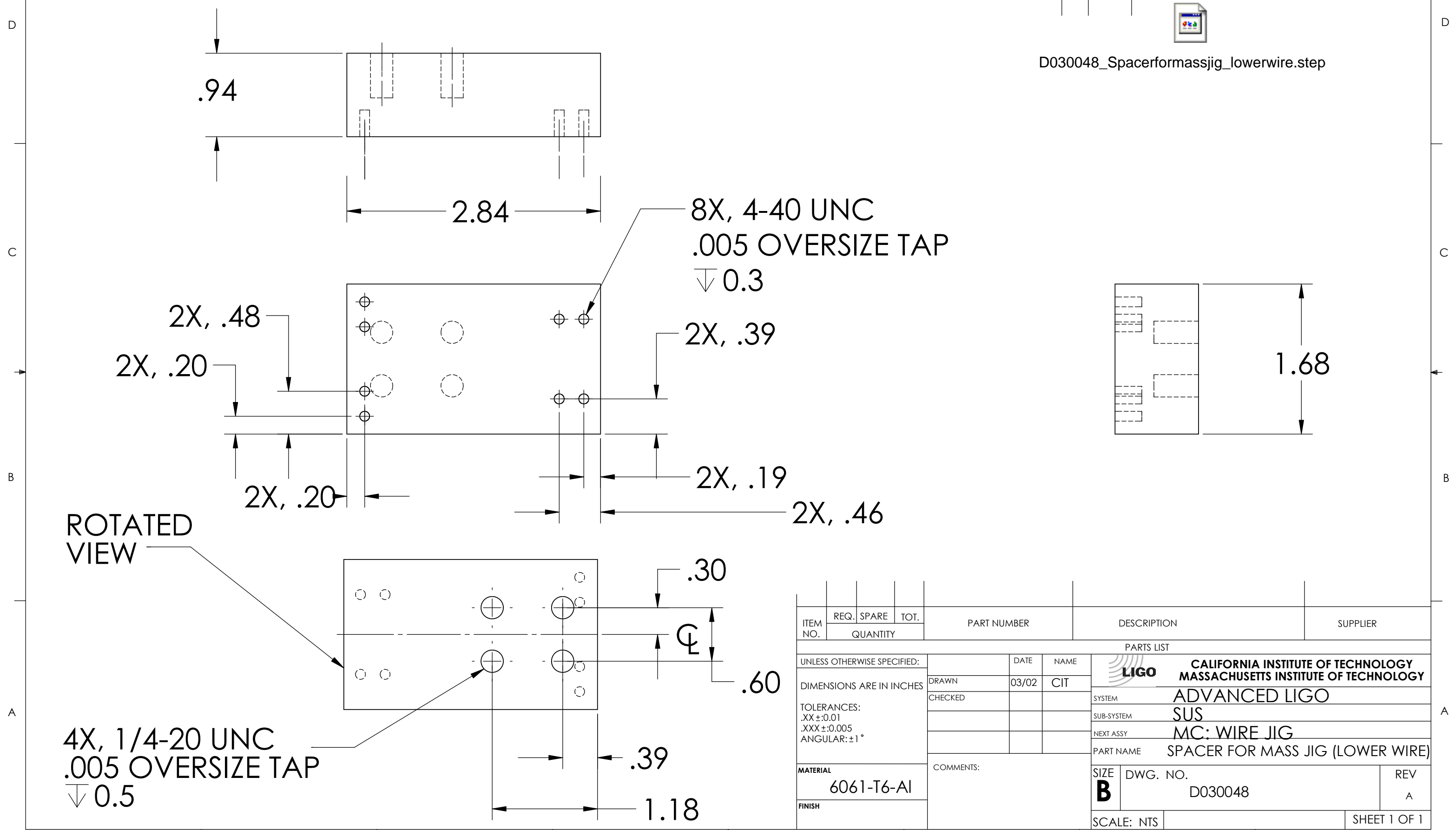


NOTES: (UNLESS OTHERWISE SPECIFIED)
 1. DIMENSIONS IN INCHES
 2. REMOVE ALL SHARP EDGES, R.02 MIN
 3. ALL MACHINING FLUIDS SHALL BE WATER SOLUBLE AND FREE OF SULFUR, CHLORINE AND SILICONE, SUCH AS CINCINNATI MILACRON'S CIMTECH 410 (STAINLESS STEEL)

REV.	DATE	DCN
A	24TH JUNE 2004	E040303-00



D030048_Spacerformassjig_lowerwire.step



ITEM NO.	REQ.	SPARE	TOT.	PART NUMBER	DESCRIPTION	SUPPLIER
UNLESS OTHERWISE SPECIFIED:				PARTS LIST		
DIMENSIONS ARE IN INCHES				DRAWN	DATE	NAME
TOLERANCES:				CHECKED	03/02	CIT
.XX \pm 0.01				CALIFORNIA INSTITUTE OF TECHNOLOGY MASSACHUSETTS INSTITUTE OF TECHNOLOGY		
.XXX \pm 0.005						
ANGULAR: \pm 1°				SYSTEM ADVANCED LIGO		
MATERIAL				SUB-SYSTEM SUS		
6061-T6-Al				NEXT ASSY MC: WIRE JIG		
FINISH				PART NAME SPACER FOR MASS JIG (LOWER WIRE)		
COMMENTS:				SIZE B	DWG. NO. D030048	REV A
SCALE: NTS				SHEET 1 OF 1		