

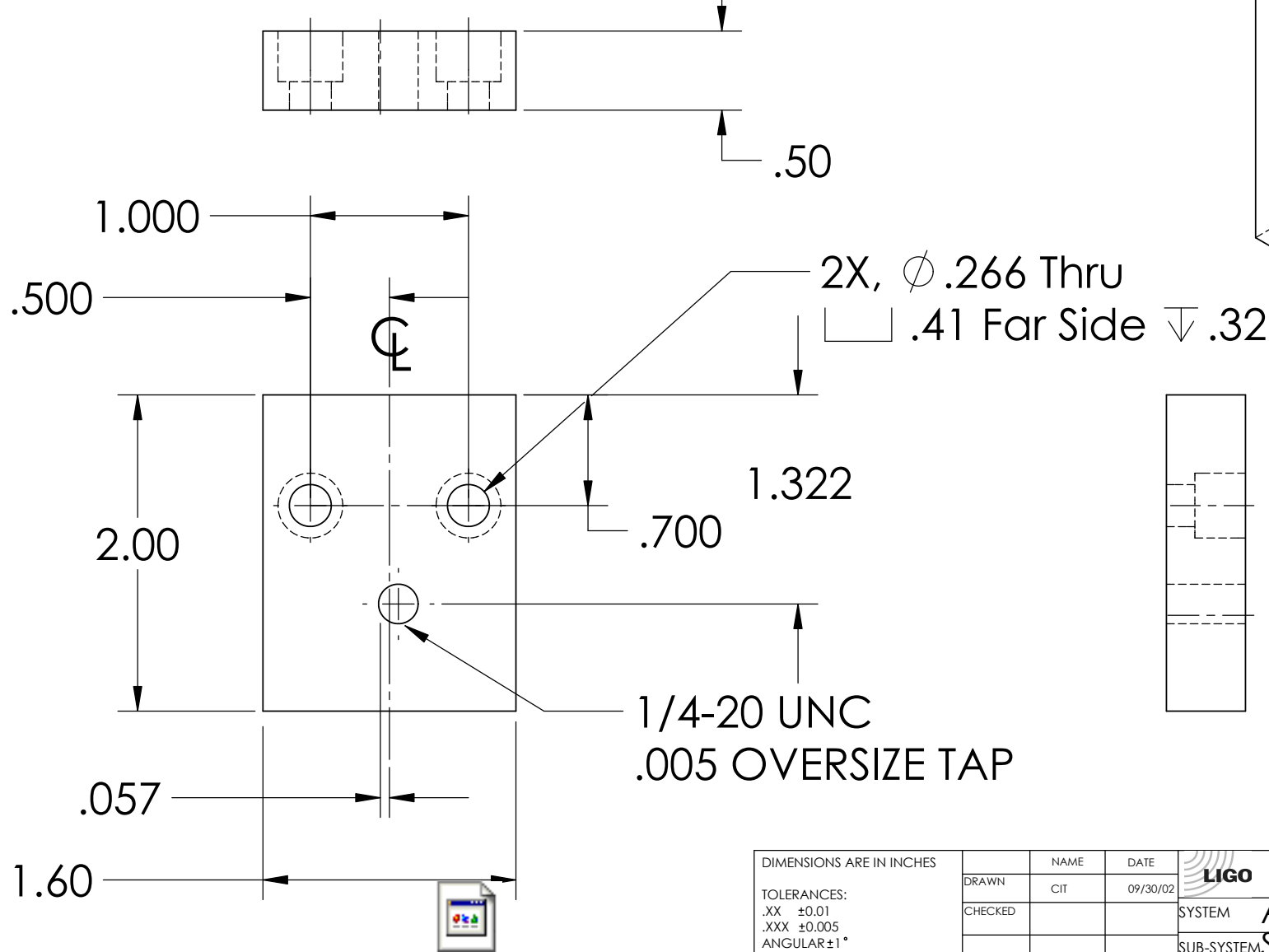
NOTES: (UNLESS OTHERWISE SPECIFIED)

1. DIMENSIONS IN INCHES

2. REMOVE ALL SHARP EDGES, R.02 MIN

3. ALL MACHINING FLUIDS SHALL BE WATER SOLUBLE AND FREE OF SULFUR, CHLORINE AND SILICONE, SUCH AS CINCINNATI MILACRON'S CIMTECH 410 (STAINLESS STEEL)

REV.	DATE	
A	24th JUNE 2004	F040303-00



D030075_LOS_winchfixture_AdapterPlate_version2.step

DIMENSIONS ARE IN INCHES		NAME	DATE	CALIFORNIA INSTITUTE OF TECHNOLOGY MASSACHUSETTS INSTITUTE OF TECHNOLOGY	
TOLERANCES:		DRAWN	CIT		09/30/02
.XX ±0.01		CHECKED			
.XXX ±0.005					
ANGULAR ±1°				SYSTEM ADVANCED LIGO	
MATERIAL				SUB-SYSTEM SUS	
6061-T6-Al				NEXT ASSY MC: UPPER BLADES	
FINISH		COMMENTS:		PART NAME LOS Winch fixture adapter plate	
				SIZE DWG. NO. D030075 REV. A	
				SCALE: NTS SHEET 1 OF 1	