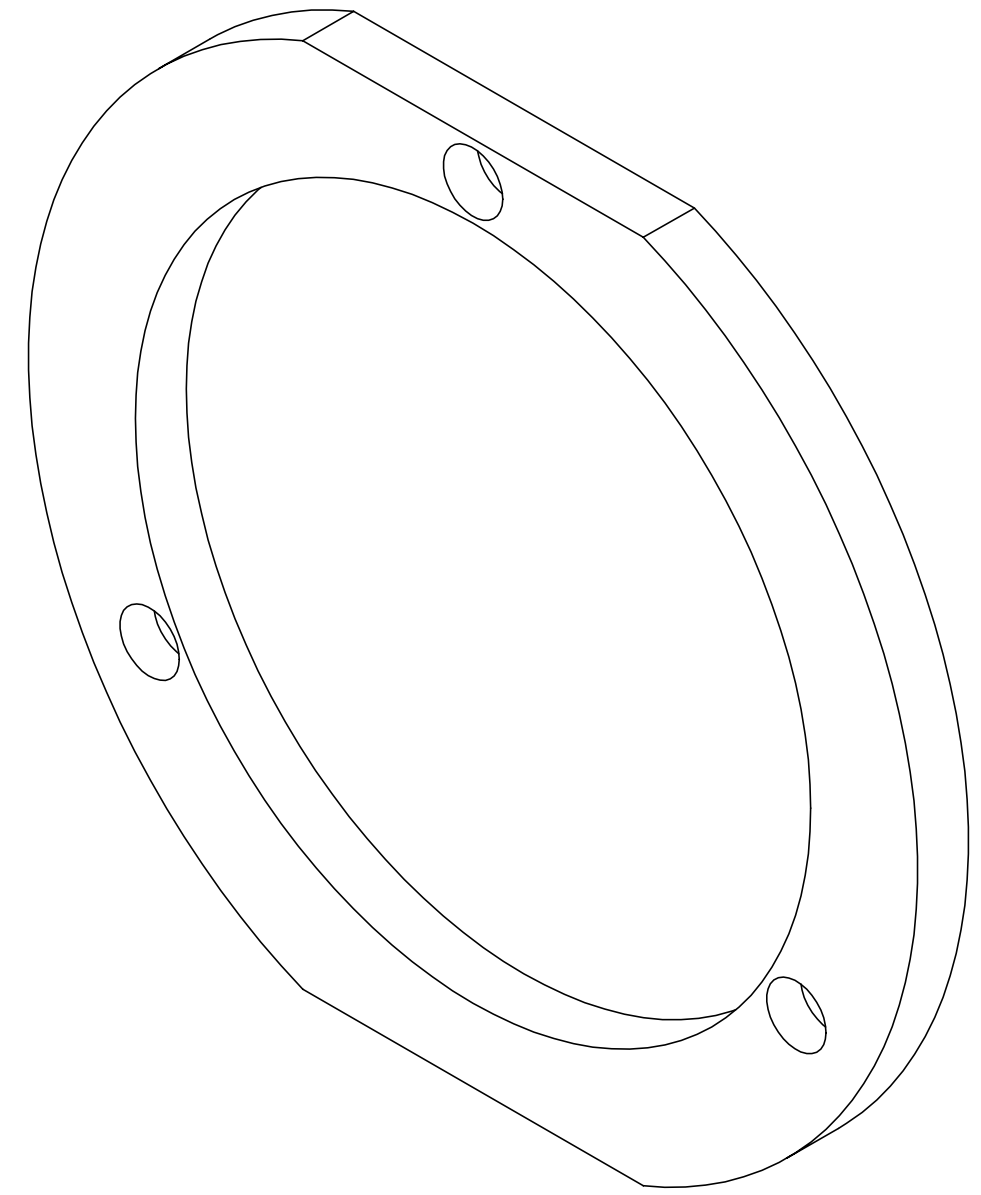
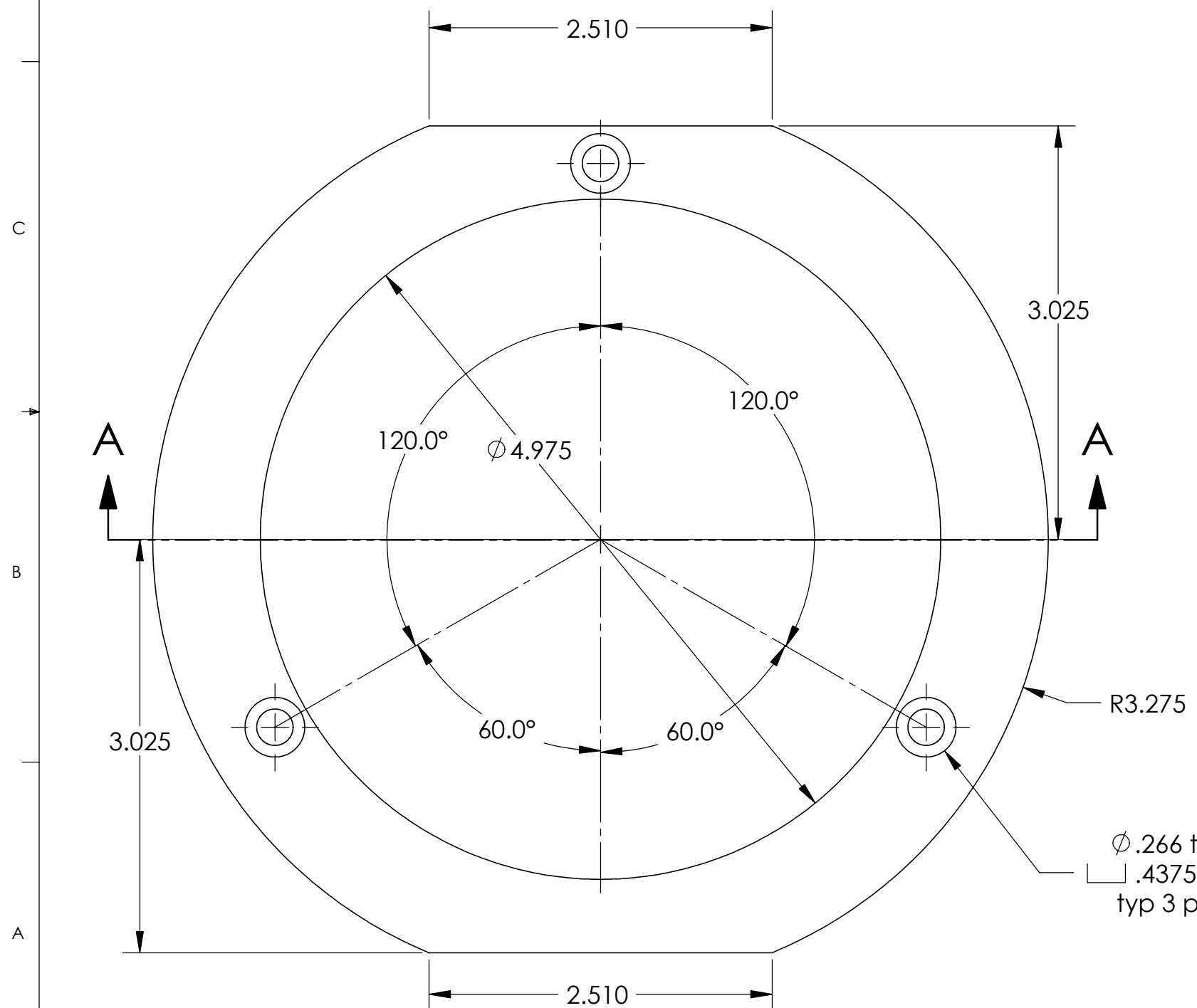
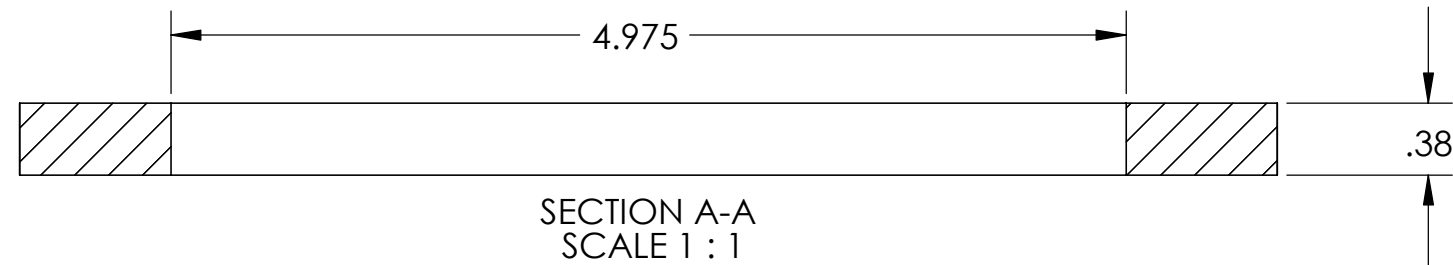


REV.	DATE	DCN #	DRAWING TREE #
A	12.15.03	E030596-00-E	



NOTES: (UNLESS OTHERWISE SPECIFIED)			
1. REMOVE ALL SHARP EDGES, R.02 MIN. 2. DO NOT SCALE FROM DRAWING. 3. ALL MACHINING FLUIDS SHALL BE WATER SOLUBLE AND FREE OF SULFUR, CHLORINE AND SILICONE, SUCH AS CINCINNATI MILACRON'S CIMTECH 410 (STAINLESS STEEL)		DIMENSIONS ARE IN INCHES TOLERANCES: .XX ± 0.01 .XXX ± 0.005 ANGULAR ± 0.5 °	
④ SCRIBE, ENGRAVE OR STAMP DRAWING PART NUMBER ON NOTED SURFACE OF PART.		MATERIAL Al 6061	
		FINISH 128 RMS	
		DRAWN O.SPJELD 12.15.03	
		CHECKED	
		APPROVED	
		SYSTEM External Pre-Isolator	
		SUB-SYSTEM HEPI	
		NEXT ASSY	
		PART NAME Vertical Actuator Crossbeam Foot Interface	
		SIZE DWG. NO. D030323	
		REV. A	
		SCALE: 1:2 PROJECTION:	
		SHEET 1 OF 1	