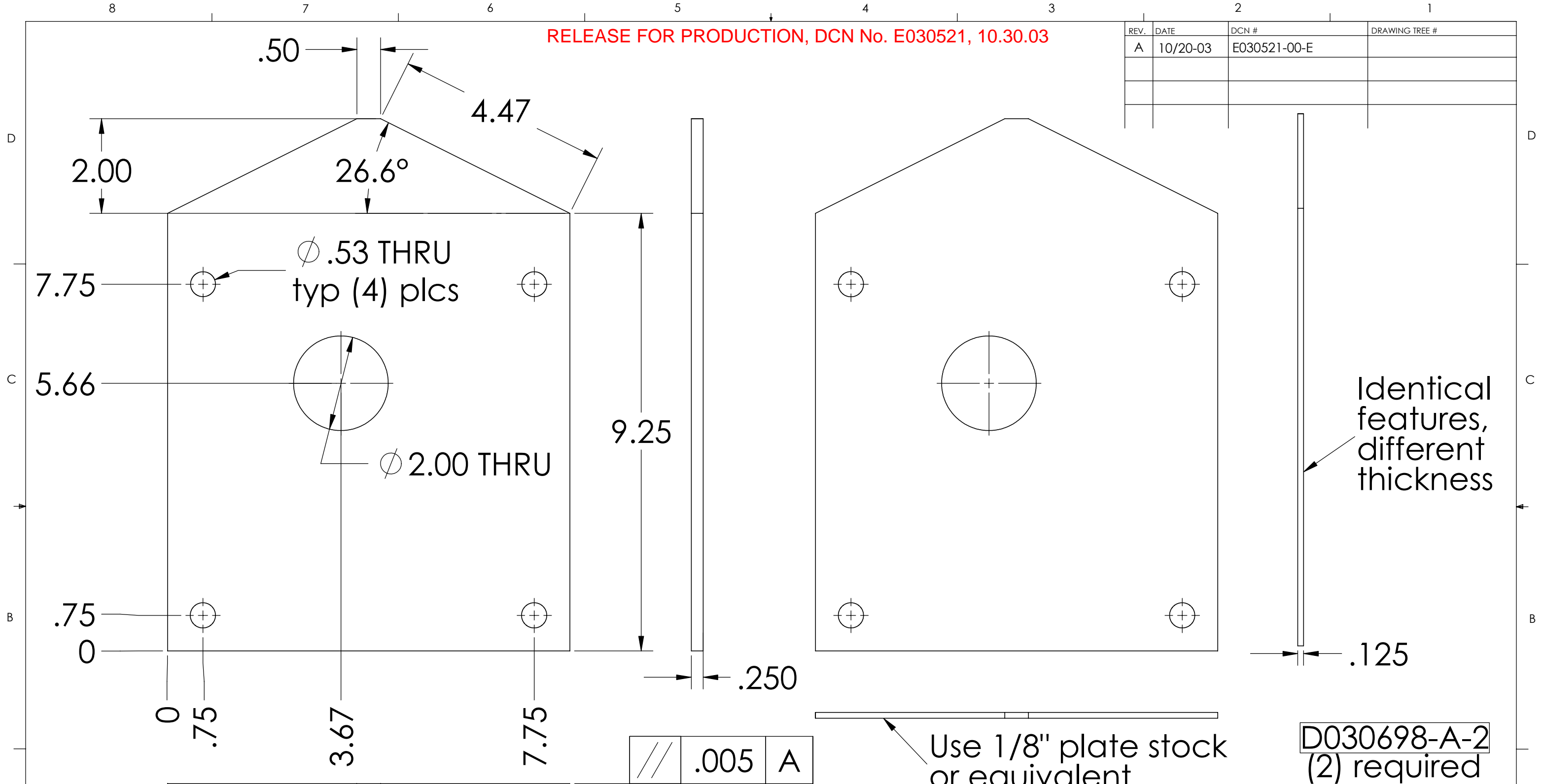


RELEASE FOR PRODUCTION, DCN No. E030521, 10.30.03

REV.	DATE	DCN #	DRAWING TREE #
A	10/20-03	E030521-00-E	



**D030698-A-1**  
(2) required

Use 1/4" plate stock or equivalent

Use 1/8" plate stock or equivalent

**D030698-A-2**  
(2) required

NOTES: UNLESS OTHERWISE SPECIFIED  
 1. REMOVE ALL BURRS AND BREAK SHARP EDGES TO A MAXIMUM OF .015  
 2. PART NUMBER (DRAWING NO., DASH NO., REVISION NO.) TO BE CLEARLY MARKED ON THE PART ITSELF

**A** .005

.005 **A**

UNLESS OTHERWISE SPECIFIED: DIMENSIONS ARE IN INCHES		NAME	DATE	CALIFORNIA INSTITUTE OF TECHNOLOGY MASSACHUSETTS INSTITUTE OF TECHNOLOGY
TOLERANCES: .XX±: .02 .XXX±: .005 ANGULAR: ± 1 DEG		DRAWN	OSPJELD	
MATERIAL		COMMENTS:		SYSTEM
FINISH				SUB-SYSTEM
1018 CRS				NEXT ASSY
RMS 128				PART NAME
				PRE-ISOLATOR ASSEMBLY
				PART NAME
				HAM ATTACH. SHIMS LEFT
SIZE	DWG. NO.	REV		
<b>B</b>	<b>D030698-A</b>	<b>A</b>		
SCALE: 1:1	D020265-A.SLDPRT	SHEET 1 OF 1		