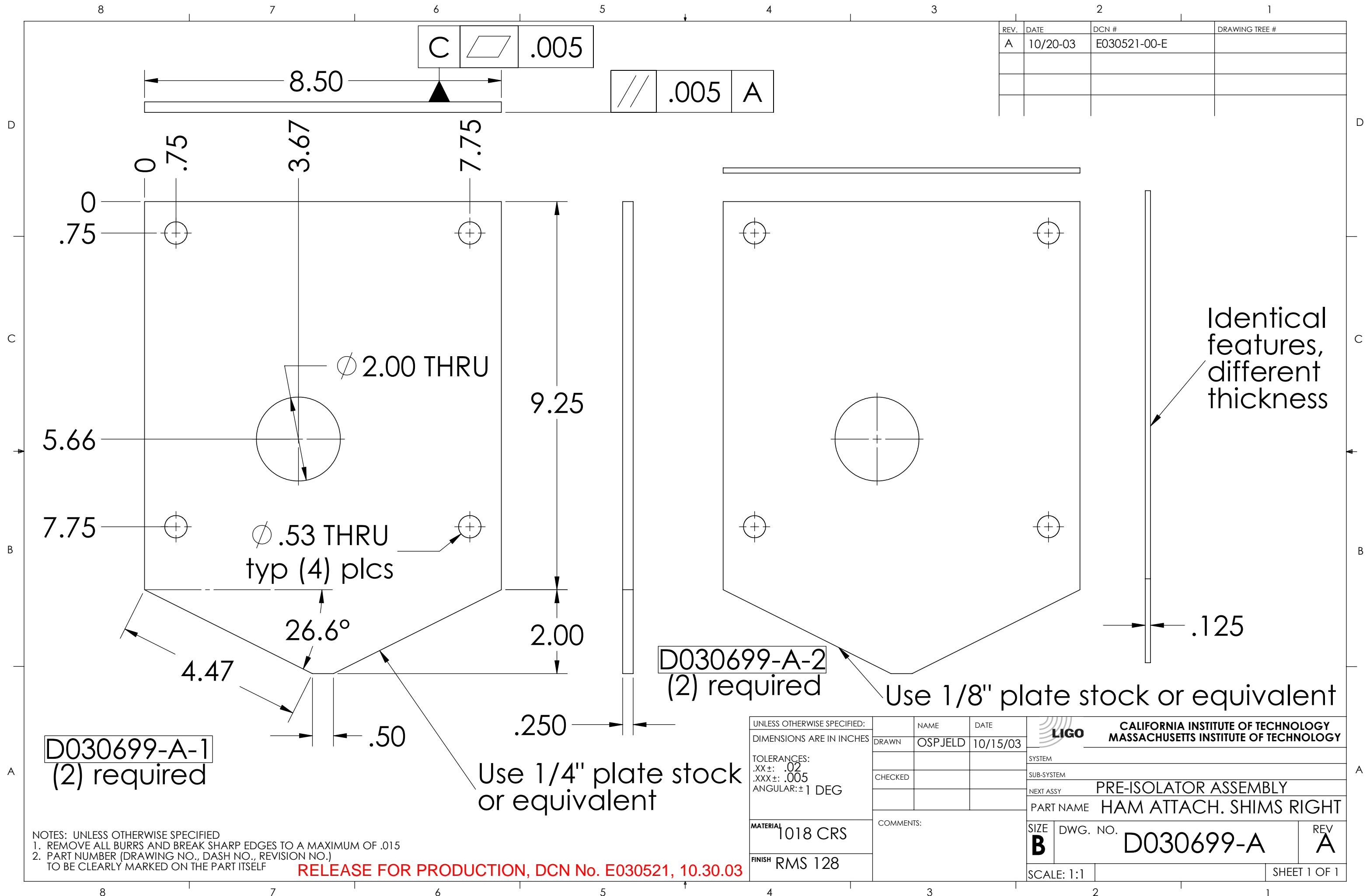


REV.	DATE	DCN #	DRAWING TREE #
A	10/20-03	E030521-00-E	



D030699-A-1
(2) required

D030699-A-2
(2) required

Use 1/4" plate stock or equivalent

Use 1/8" plate stock or equivalent

Identical features, different thickness

NOTES: UNLESS OTHERWISE SPECIFIED
 1. REMOVE ALL BURRS AND BREAK SHARP EDGES TO A MAXIMUM OF .015
 2. PART NUMBER (DRAWING NO., DASH NO., REVISION NO.) TO BE CLEARLY MARKED ON THE PART ITSELF

RELEASE FOR PRODUCTION, DCN No. E030521, 10.30.03

UNLESS OTHERWISE SPECIFIED: DIMENSIONS ARE IN INCHES		NAME OSPJELD	DATE 10/15/03	CALIFORNIA INSTITUTE OF TECHNOLOGY MASSACHUSETTS INSTITUTE OF TECHNOLOGY
TOLERANCES: .XX±: .02 .XXX±: .005 ANGULAR: ±1 DEG		DRAWN	CHECKED	
MATERIAL 1018 CRS	COMMENTS:			SUB-SYSTEM
FINISH RMS 128				NEXT ASSY PRE-ISOLATOR ASSEMBLY
				PART NAME HAM ATTACH. SHIMS RIGHT
SIZE B	DWG. NO. D030699-A	REV A		
SCALE: 1:1				SHEET 1 OF 1