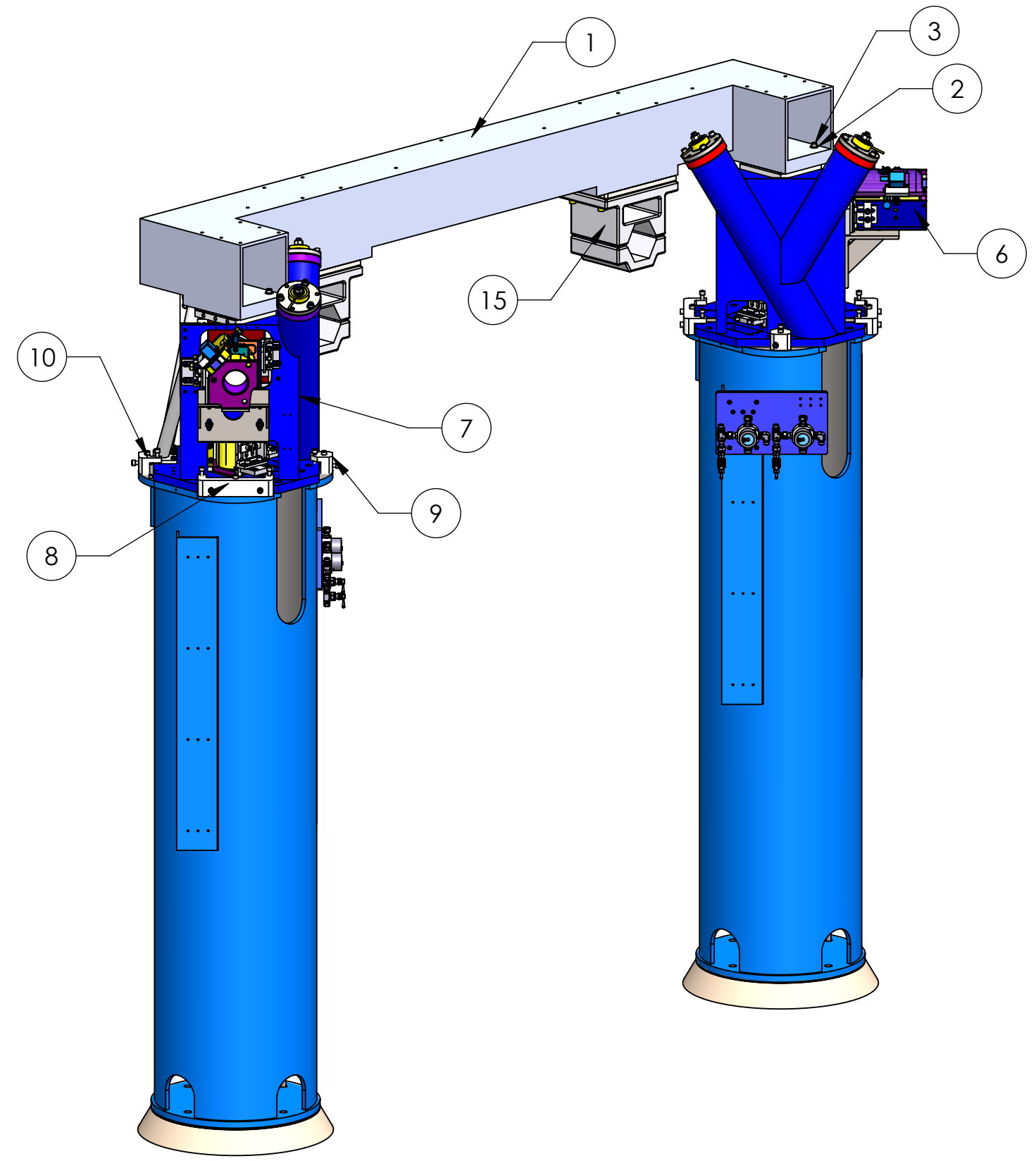


REV.	DATE	DCN #	DRAWING TREE #
v1	15 Apr. 2011	E1100015	E1100016



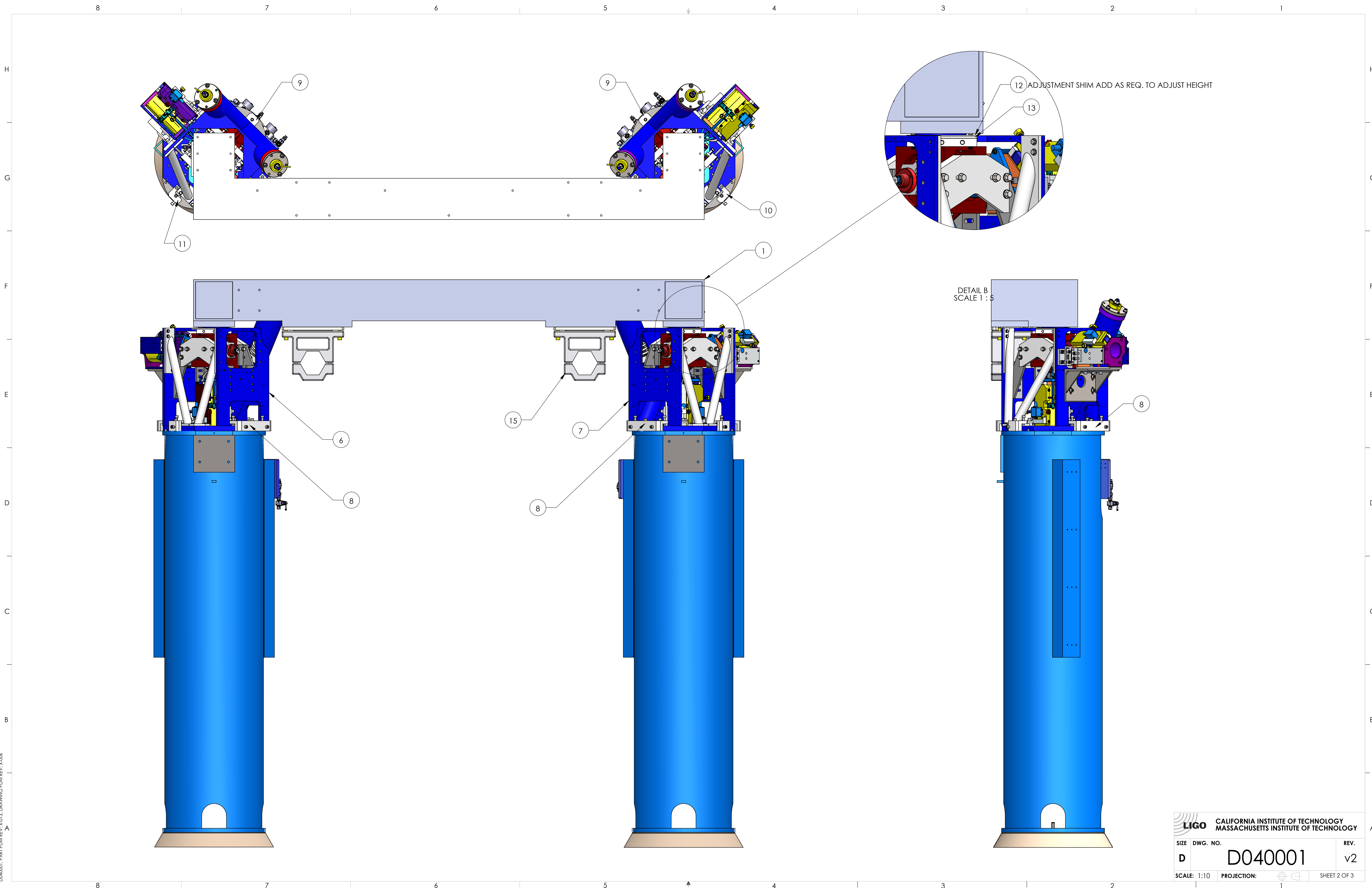
15	D1100612	SUPPORT TUBE CLAMP ASSY, αLIGO HEPI BSC	SEE BOM	2
14	D972128-3	BSC SUPPORT PIER LLO, αLIGO HEPI BSC	ASTM A36 Steel	2
13	D030700-2	HEPI HEIGHT ADJUSTMENT SHIMS, αLIGO BSC	AISI 1018 Steel, Cold Rolled	AS REQ.
12	D030700-1	HEPI HEIGHT ADJUSTMENT SHIMS, αLIGO BSC	AISI 1018 Steel, Cold Rolled	AS REQ.
11	D030438	OFFSET CLAMP ASSEMBLY, αLIGO HEPI	SEE BOM	1
10	D030369	OFFSET CLAMP ASSEMBLY RIGHT, αLIGO HEPI	SEE BOM	1
9	D1100529	STRAIGHT CLAMP ASSEMBLY, αLIGO HEPI	SEE BOM	2
8	D030367	DOUBLE CLAMP ASSEMBLY. αLIGO HEPI	SEE BOM	4
7	D1100242	HEPI MAIN SUPPORT ASSEMBLY, αLIGO BSC LEFT	SEE BOM	1
6	D1100241	HEPI MAIN SUPPORT ASSEMBLY, αLIGO BSC LEFT	SEE BOM	1
5		FOUR WAY VALVE	--	1
4		FOUR WAY VALVE	--	1
3	HOLOKROME_77540	SCREW 1/2-20 X 4" SHCS	Alloy Steel	8
2	MCMMASTER_98049A640	WASHER 1/2 ID X 1 1/8 OD X .11 THK	18-8 SSTL	8
1	D972118	CROSSBEAM WELDMENT, αLIGO BSC HEPI	ASTM A36 Steel	1
ITEM NO.	PART NUMBER	DESCRIPTION	MATERIAL	QTY.LLO

NOTES:
5. VENDOR REFERENCES ARE PROVIDED AS EXAMPLES OF PARTS MEETING ALL REQUIRED SPECIFICATIONS. EQUIVALENTS ARE ALWAYS ACCEPTABLE UNLESS OTHERWISE SPECIFIED.
6. REFER TO LIGO E0900357 FOR ASSEMBLY AND LOADING PROCEDURE.
7. APPLY ITEMS 15 AND 16 AS REQ TO ADJUST HEIGHT.

NOTES AND TOLERANCES: (UNLESS OTHERWISE SPECIFIED)	
DIMENSIONS ARE IN INCHES	
1. INTERPRET DRAWING PER ASME Y14.5-1994.	
2. REMOVE ALL SHARP EDGES, R.02 MIN.	
3. DO NOT SCALE FROM DRAWING.	
4. ALL MACHINING FLUIDS MUST BE FULLY SYNTHETIC, FULLY WATER SOLUBLE AND FREE OF SULFUR, SILICONE, AND CHLORINE.	
TOLERANCES: .XX ± N/A .XXX ± N/A	FINISH N/A μinch
MATERIAL SEE BOM	ANGULAR ± N/A°

LIGO CALIFORNIA INSTITUTE OF TECHNOLOGY MASSACHUSETTS INSTITUTE OF TECHNOLOGY		PART NAME	
SYSTEM ADVANCED LIGO	SUB-SYSTEM SEI	HEPI TOP LEVEL ASSY, αLIGO BSC	
DESIGNER O.SPJELD	08 June 2004	SIZE DWG. NO. B	D040001
DRAFTER M.HILLARD	15 Apr. 2011	REV. v2	
CHECKER K.MASON	15 Apr. 2011	SCALE: 1:20	PROJECTION:
APPROVAL K.MASON	15 Apr. 2011	SHEET 1 OF 3	

D040001, PART PDM REV: X-013, DRAWING PDM REV: X-006

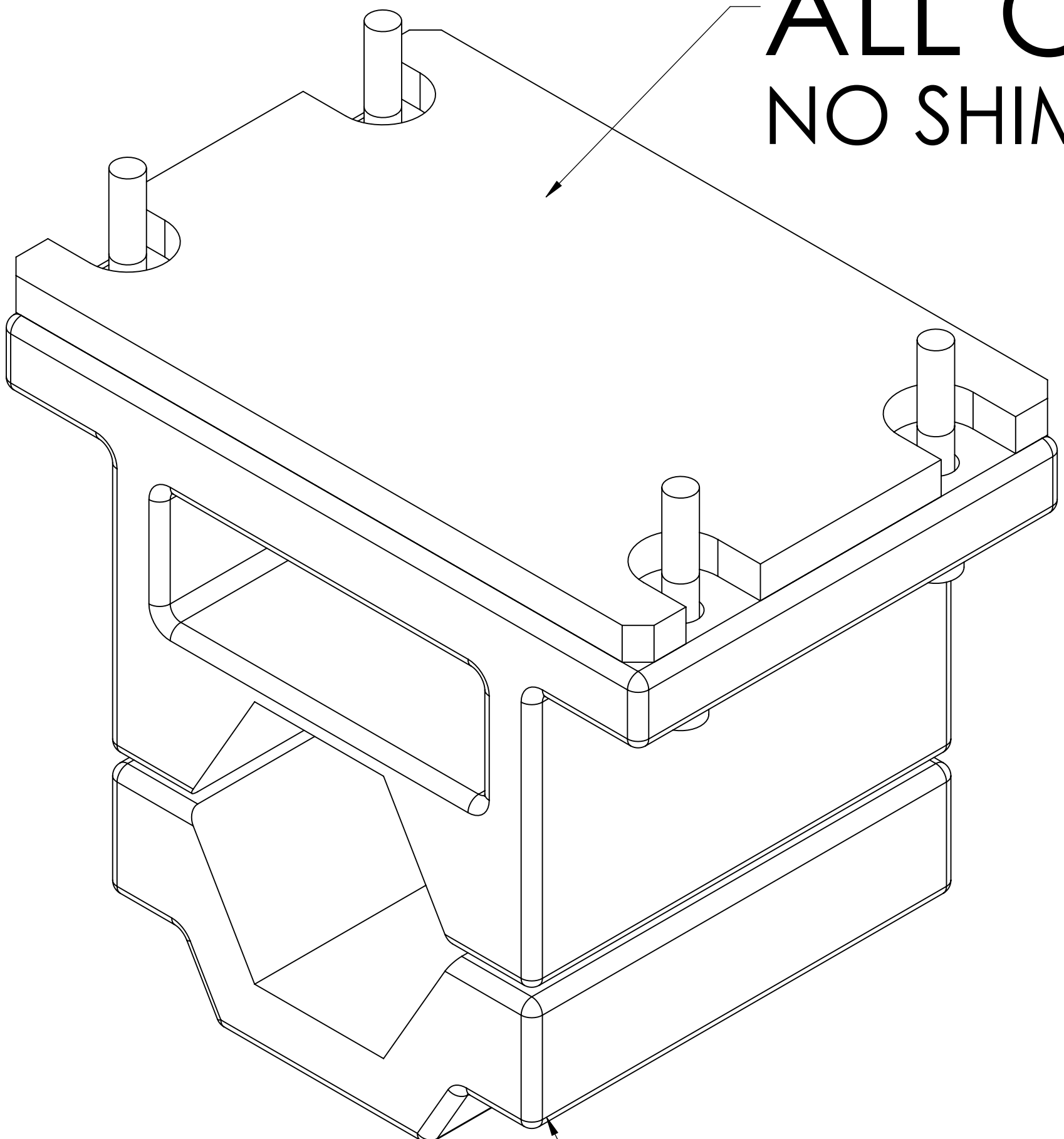


D040001.PART.PDM.REV.X-013.DRAWING.PDM.REV.X-006

8 7 6 5 4 3 2 1

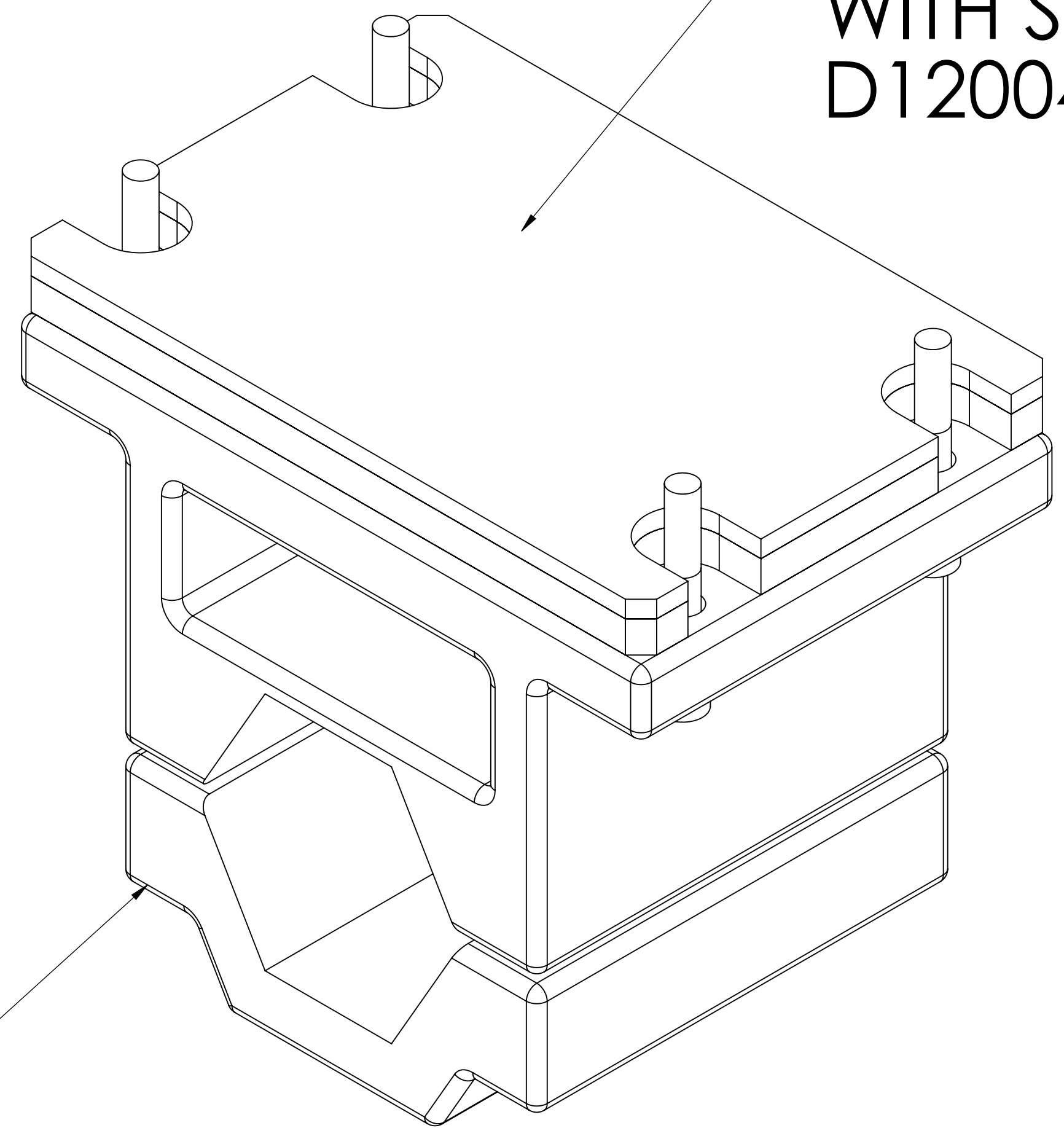
H
G
F
E
D
C
B
A

**ALL OTHER BSC (EXCEPT WBSC4)
NO SHIM**



15


**WBSC4 ONLY
WITH SHIM
D1200400**



15

DD40001 PART PDM REV: X.004 DRAWING PDM REV: X.006

8 7 6 5 4 3 2 1

 CALIFORNIA INSTITUTE OF TECHNOLOGY MASSACHUSETTS INSTITUTE OF TECHNOLOGY		
SIZE	DWG. NO.	REV.
D	D1100612	v2
SCALE: 1:2	PROJECTION:	SHEET 3 OF 3