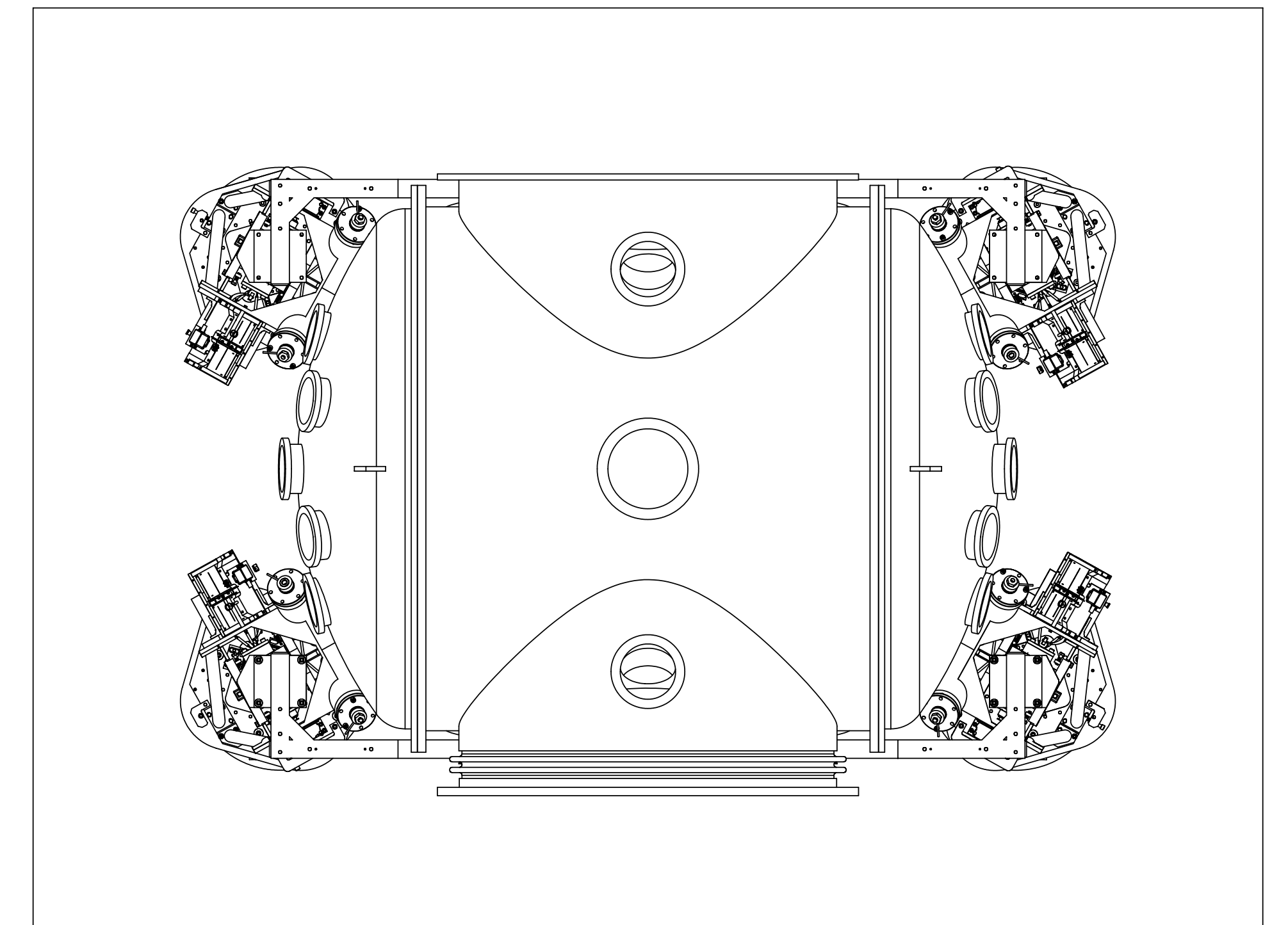
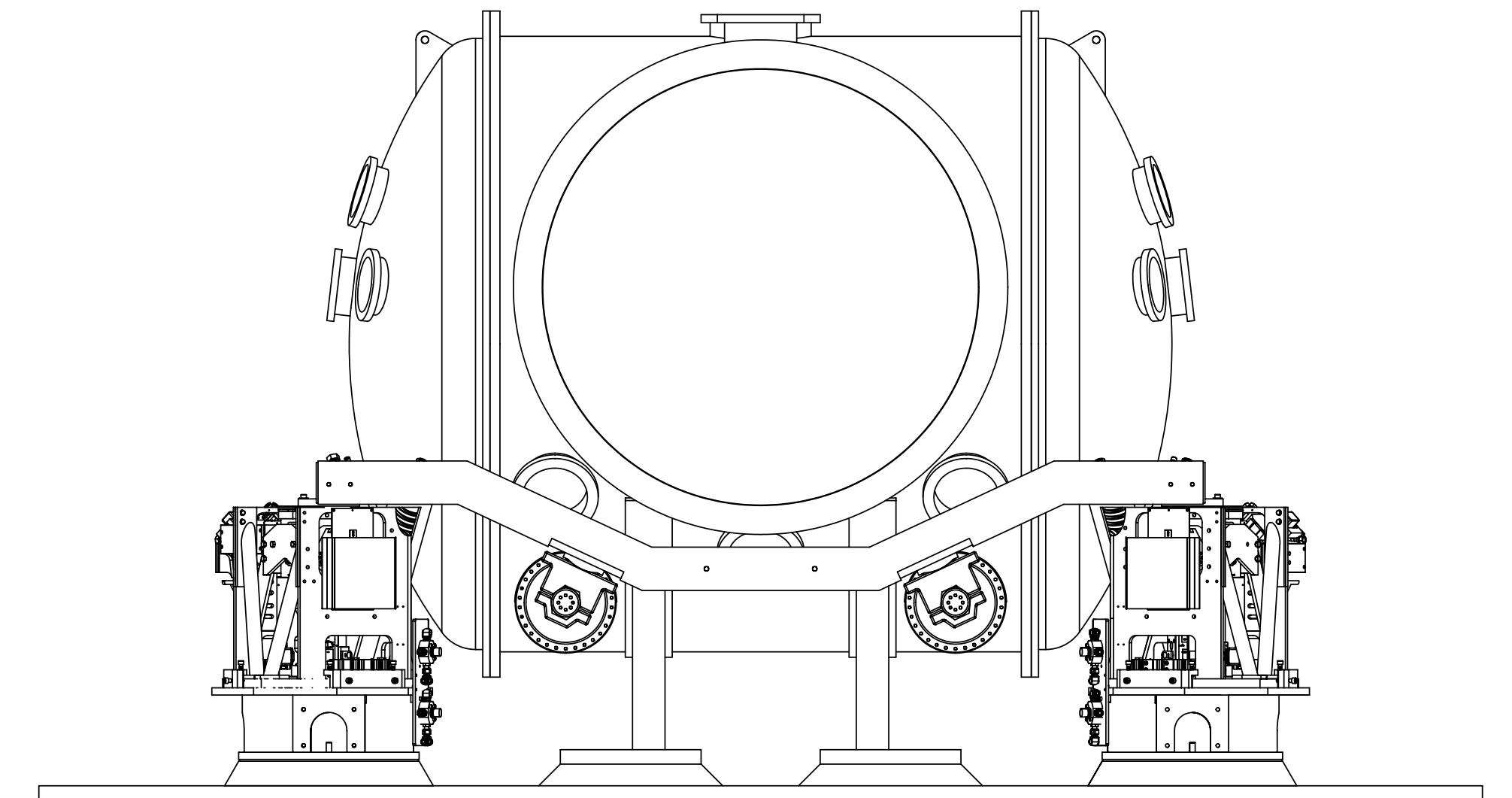
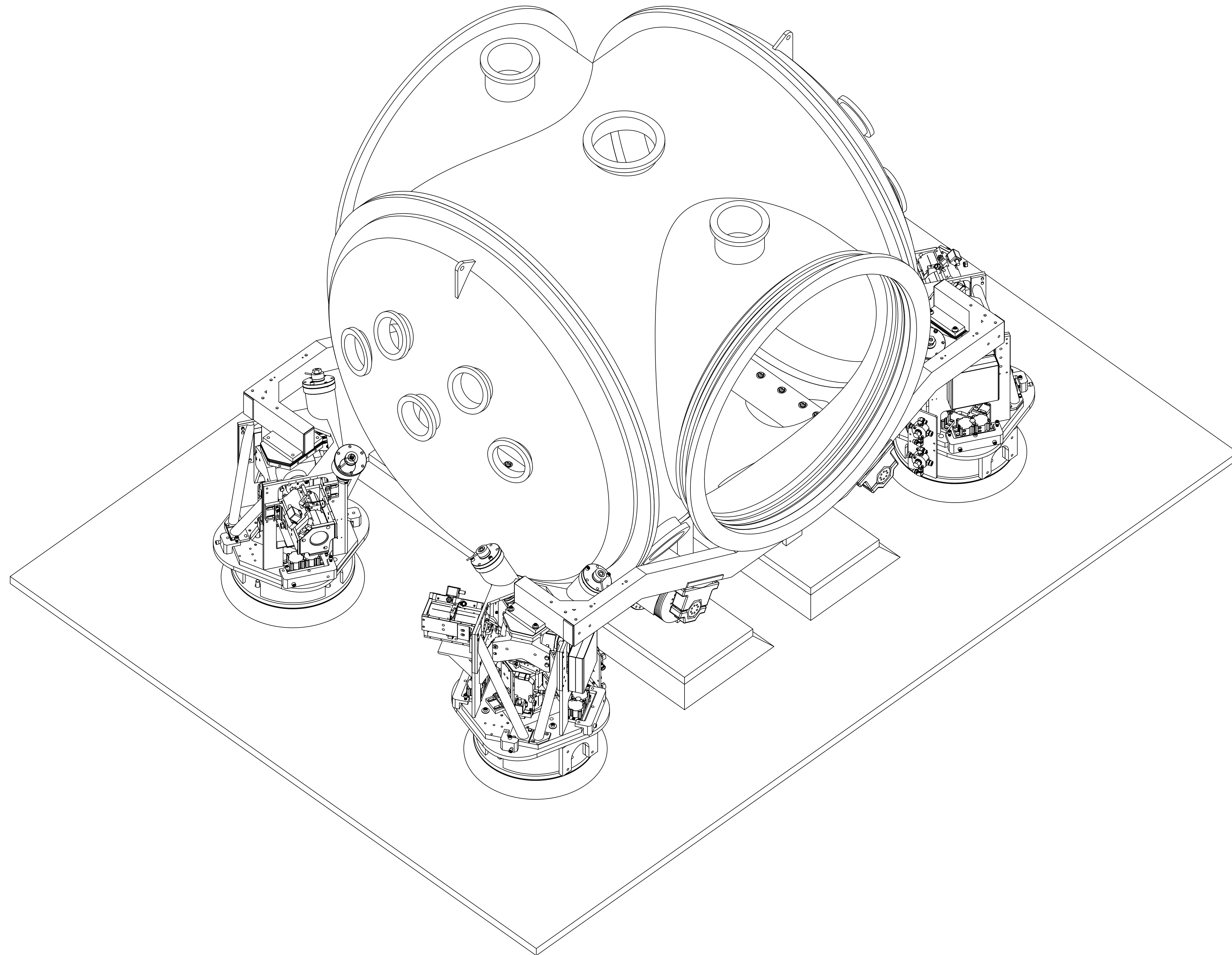


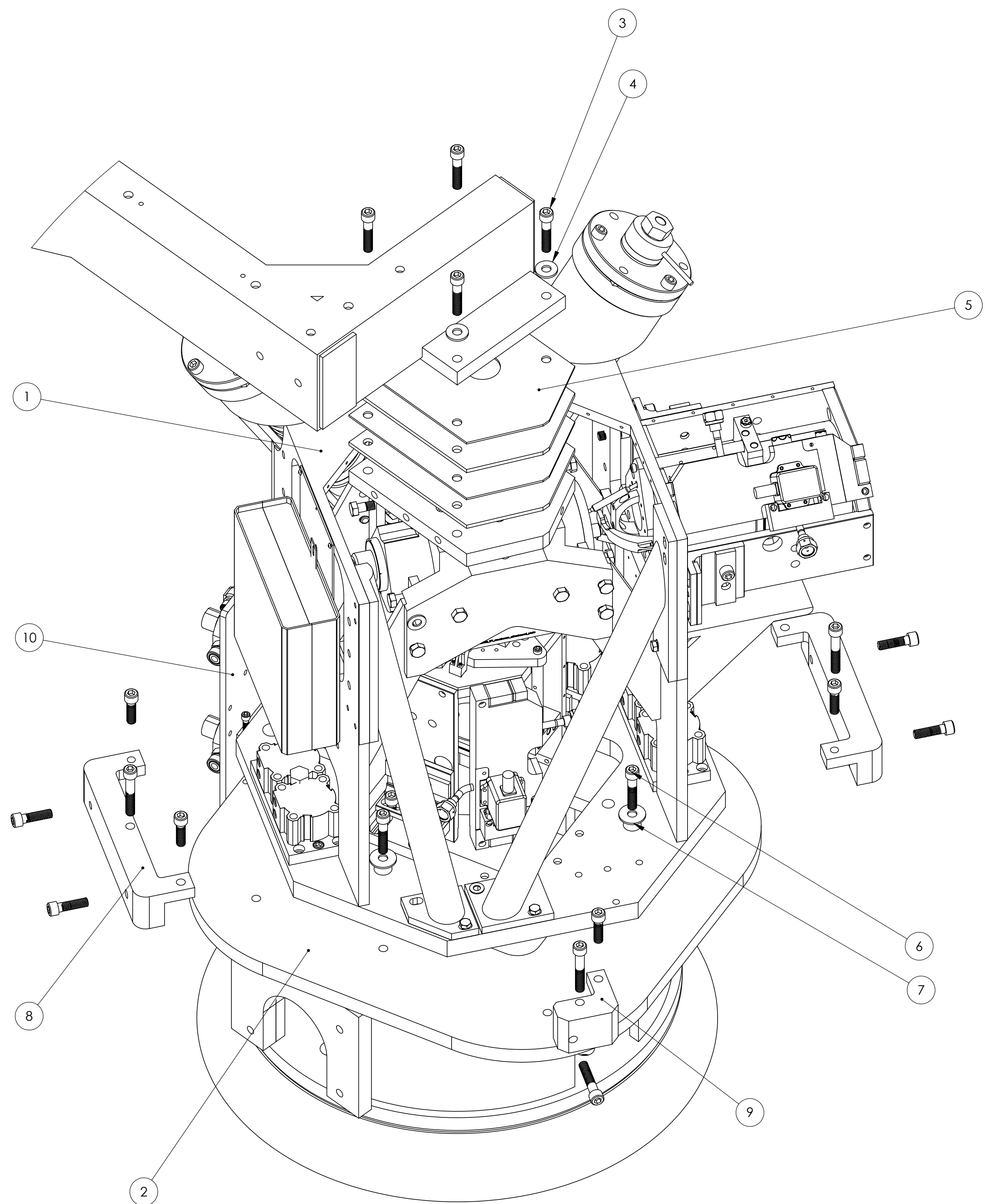
HAM Top Level Assembly

REV.	DATE	DCN #	DRAWING TREE #
A	06/08/04	E040167-00-E	

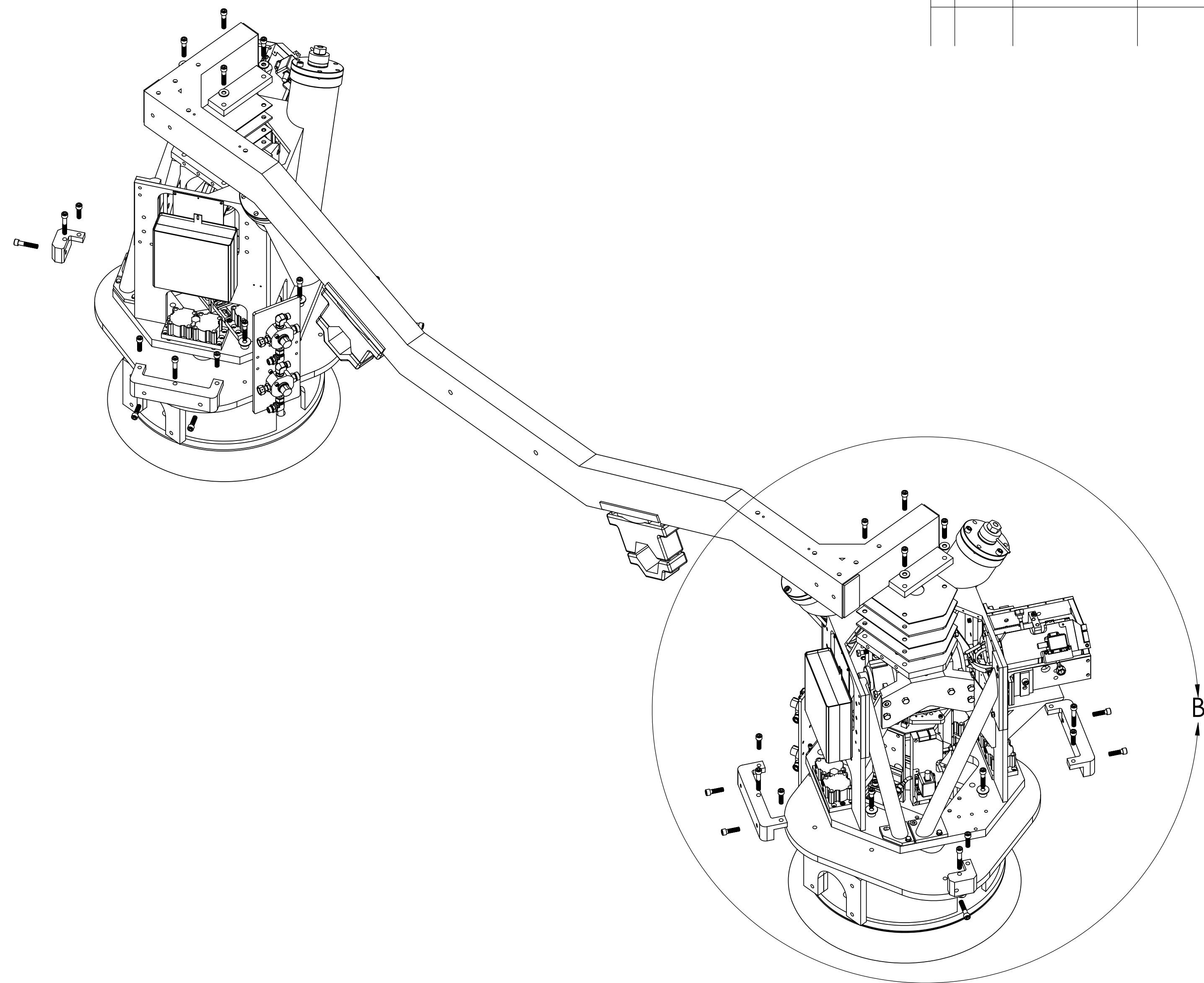


NOTES: (UNLESS OTHERWISE SPECIFIED)		LIGO CALIFORNIA INSTITUTE OF TECHNOLOGY MASSACHUSETTS INSTITUTE OF TECHNOLOGY	
DIMENSIONS ARE IN INCHES		SYSTEM External Pre Isolator	
TOLERANCES: .XX ± 0.01 .XXX ± 0.005 ANGULAR ± 0.5 °		SUB-SYSTEM HEPI	
MATERIAL		NEXT ASSY	
FINISH		PART NAME	
		HAM Top Level Assembly	
DRAWN	NAME DATE	SIZE DWG. NO.	REV.
CHECKED	O.SP. JED 01.06.04	B D040002 Sheet No. 1/2	A
APPROVED		SCALE: 1:1	PROJECTION: SHEET 1 OF 2

REV.	DATE	DCN #	DRAWING TREE #
A	06/08/04	E040167-00-E	



**DETAIL B
SCALE 1 : 4**



ITEM NO.	Default/QTY.	PART NUMBER	DESCRIPTION	VENDOR
1	1	D020124	EPI HAM Assembly (Right)	LLO
2	1	E030329	HAM Pier (Right)	Southern Enterprises, Inc.
3	4	91251A027	S.H.C.S. 1/2-20 x 2.75	McMaster - Carr.
4	4	98029A033	SAE 1/2 F.W. OD: 1.063	McMaster - Carr.
6	4	D030699 (D030698 Left)	HAM Shim Plates (Right)	Lavallee
7	4	92316A722	Hex Head Bolt 1/2-13 x 2.50	McMaster
7	4	92140A120	SAE 1/2 F.W. OD: 2.000	McMaster
8	2	D020269	Double Clamp	Lavallee
9	1	D020270	Offset Clamp (Right)	Lavallee
9b	1	D020271	Straight Clamp	Lavallee
10	1	D040103	HAM Four-way Valve Assembly	Parker / Southern

NOTES: (UNLESS OTHERWISE SPECIFIED)

DIMENSIONS ARE IN INCHES
TOLERANCES:
XX ± 0.01
XXX ± 0.005
ANGULAR ± 0.5 °

MATERIAL

FINISH

SYSTEM External Pre Isolator
SUB-SYSTEM HEPI

PART NAME HAM Top Level Detail

ITEM NO. B
DWG. NO. D040002 Sheet No. 2/2
SCALE: 1:1
PROJECTION:

REVISIONS:

DATE	BY	CHKD	APPD
04.16.04	O.SP.JED		

SHEET 2 OF 2