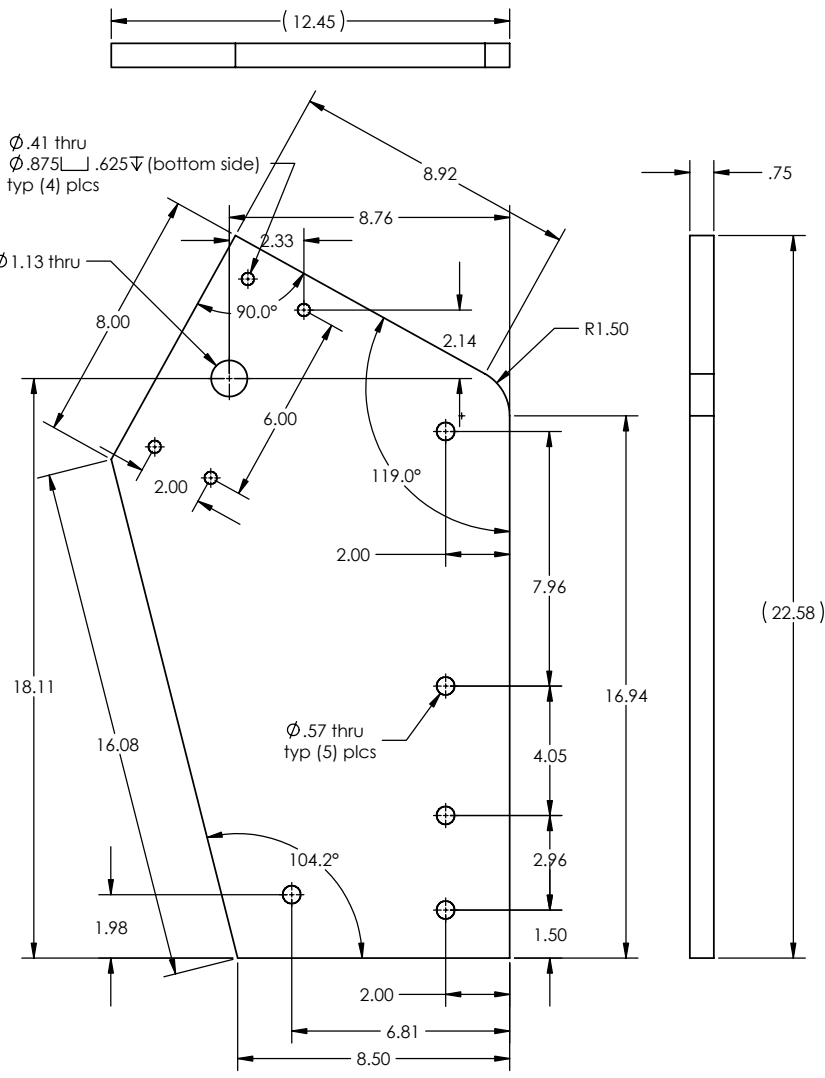
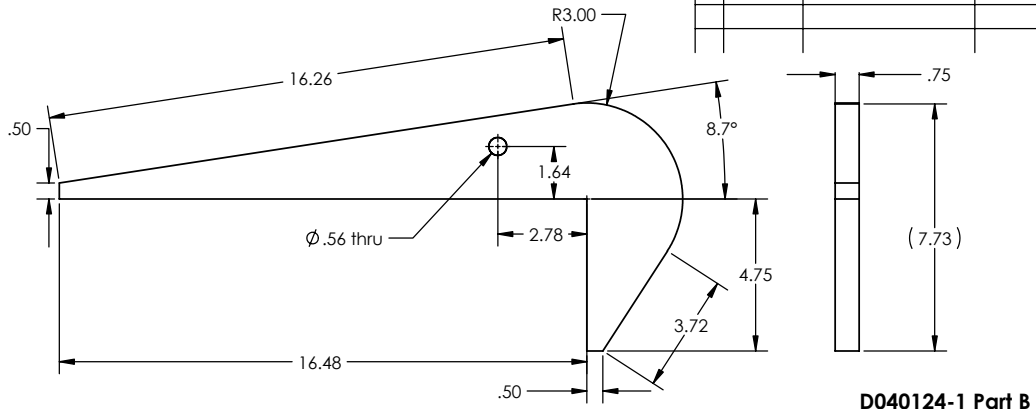


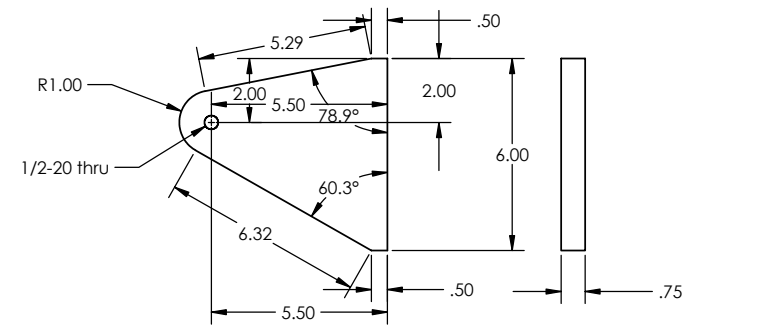
REV.	DATE	DCN #	DRAWING TREE #
A	04/01/2004	E040127-00-E	



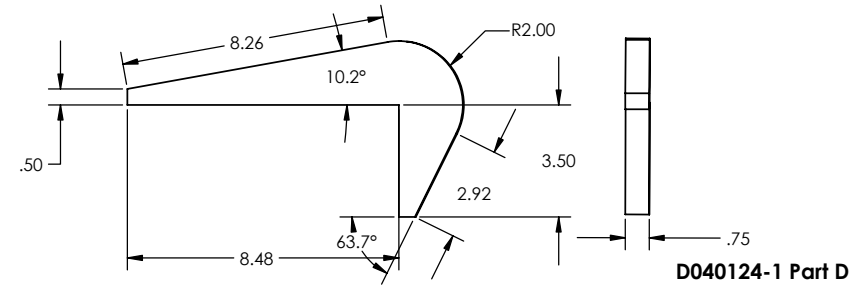
**D040124-1 Part A**



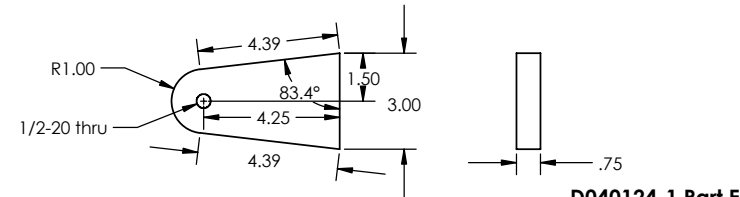
**D040124-1 Part B**



**D040124-1 Part C**



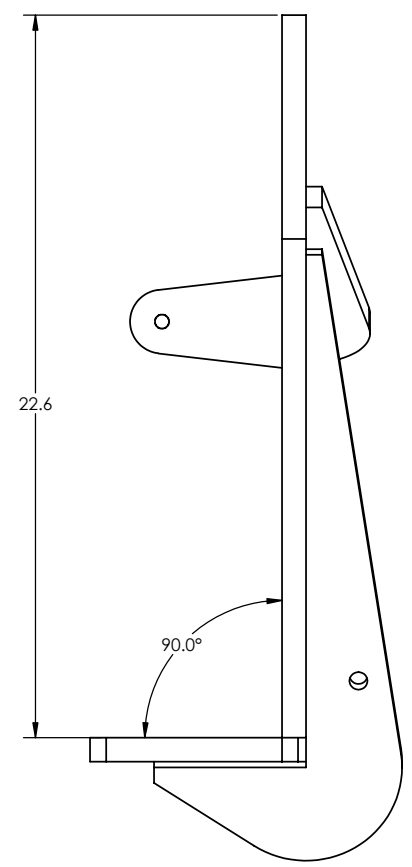
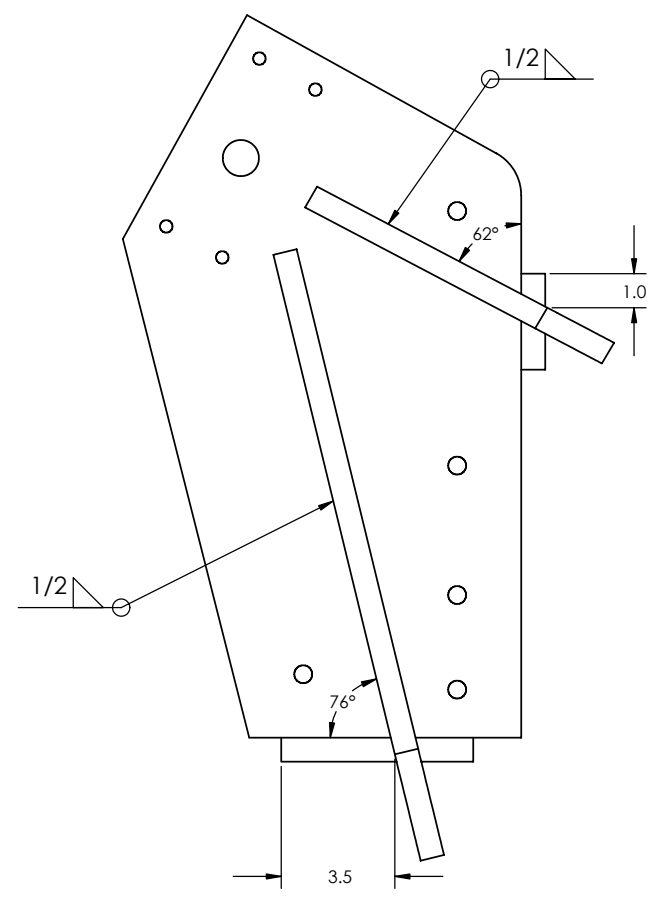
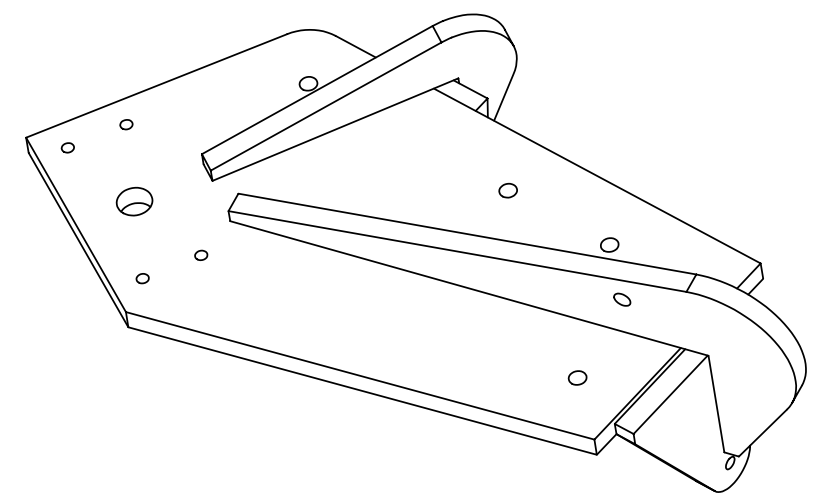
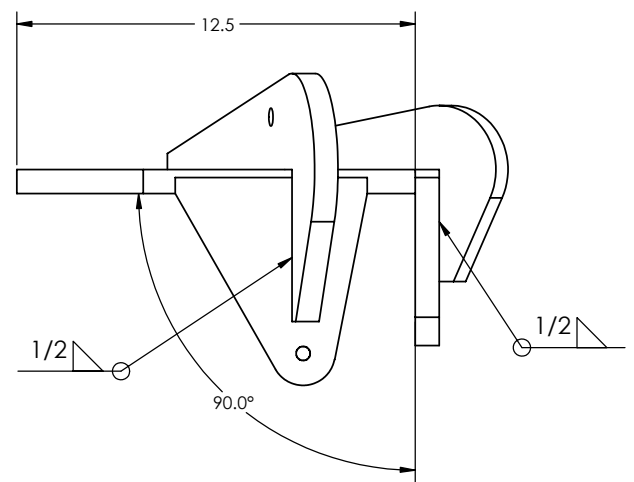
**D040124-1 Part D**



**D040124-1 Part E**

PARTS LIST		CALIFORNIA INSTITUTE OF TECHNOLOGY MASSACHUSETTS INSTITUTE OF TECHNOLOGY	
NOTES: (UNLESS OTHERWISE SPECIFIED) 1. REMOVE ALL SHARP EDGES. 2. DO NOT SCALE FROM DRAWING. 3. ALL MACHINING FLUIDS SHALL BE WATER SOLUBLE AND FREE OF SILURIK, CHLORINE AND SILICONE SUCH AS CONCERNING IMAGATIONS CIMECH 410 (STAINLESS STEEL)		DIMENSIONS ARE IN INCHES TOLERANCES: XX ± 0.01 XXX ± 0.005 ANGULAR ± 0.5°	
MATERIAL <b>St. 936 Stock 3/4"</b>		SYSTEM External Pre Isolator	
FINISH Unpainted		SUB-SYSTEM HEPI	
PART NAME <b>HAM Lifting Plate - Details</b>		NEXT ASSY	
DRAWN 03/31/04 04/01/2004	NAME DATE	SIZE D040124-1	REV. A
SCALE: 1:2		PROJECTION:	
SHEET 1 OF 3			

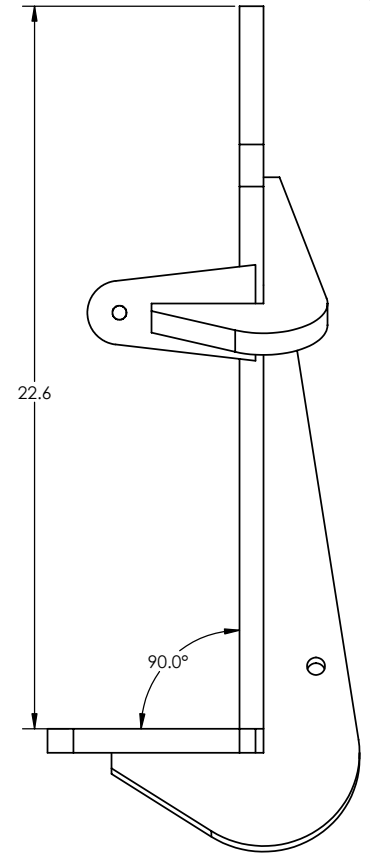
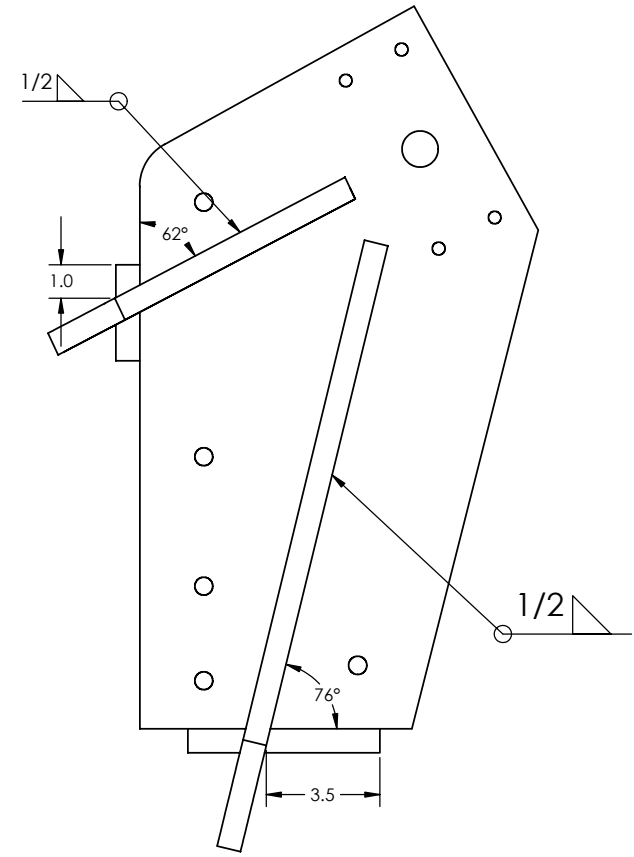
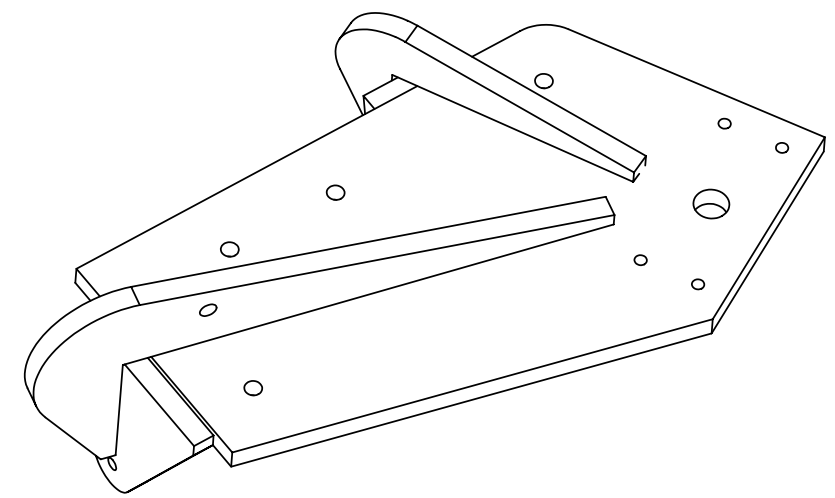
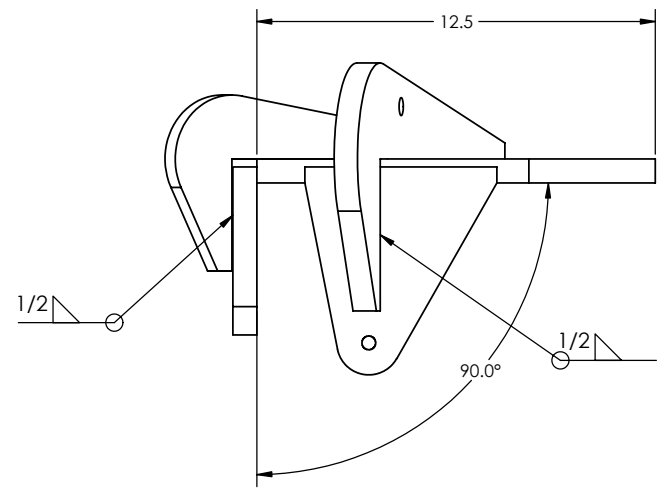
REV.	DATE	DCN #	DRAWING TREE #
A	04/01/2004	E040127-00-E	



PARTS LIST			
NOTES: (UNLESS OTHERWISE SPECIFIED)			
1. REMOVE ALL SHARP EDGES. REZAM.		DIMENSIONS ARE IN INCHES	
2. DO NOT SCALE FROM DRAWING.		TOLERANCES:	
3. ALL MACHINING FLUIDS SHALL BE WATER SOLUBLE AND FREE OF SILURIK, CHLORINE AND SILICONE SUCH AS CONCERNANT IMAGONS CIMTECH 410 (STAINLESS STEEL)		XX: ± 0.01	
		XXX: ± 0.005	
		ANGULAR: ± 0.5 °	
MATERIAL		PART NAME	
ST-836 Stock 3/4		HAM Lifting Plate - Right	
FINISH		NEXT ASSY	
Unpainted		HEPI	
DRAWN		SCALE: 2:1	
G.S.P./JEL		PROJECTION:	
CHECKED		SHEET 2 OF 3	
APPROVED			

CALIFORNIA INSTITUTE OF TECHNOLOGY  
 MASSACHUSETTS INSTITUTE OF TECHNOLOGY  
 SYSTEM: External Pre Isolator  
 SUB-SYSTEM: HEPI  
 NEXT ASSY: HEPI  
 PART NAME: HAM Lifting Plate - Right  
 SIZE: DWG. NO. D040124-2  
 REV. A  
 SCALE: 2:1 PROJECTION: SHEET 2 OF 3

REV.	DATE	DCN #	DRAWING TREE #
A	04/01/2004	E040127-00-E	



PARTS LIST			
NOTES: (UNLESS OTHERWISE SPECIFIED)			
1. REMOVE ALL SHARP EDGES. REZEAM.		DIMENSIONS ARE IN INCHES	
2. DO NOT SCALE FROM DRAWING.		TOLERANCES:	
3. ALL MACHINING FLUIDS SHALL BE WATER SOLUBLE AND FREE OF SILURIK, CHLORINE AND SILICONE. SUCH AS CONCINNATI IMAGONS CIMTECH 410 (STAINLESS STEEL)		XX: ± 0.01	
		XXX: ± 0.005	
		ANGULAR: ± 0.5 °	
MATERIAL		PART NAME	
ST-836 Stock 3/4		HAM Lifting Plate - Left	
FINISH		NEXT ASSY	
Unpainted		HEPI	
DRAWN		DATE	
G.S.P./JEL		04/01/2004	
CHECKED		SIZE	
APPROVED		B	
		DWG. NO. D040124-3	
		REV. A	
		SCALE: 2:1 PROJECTION: 1st	
		SHEET 3 OF 3	

