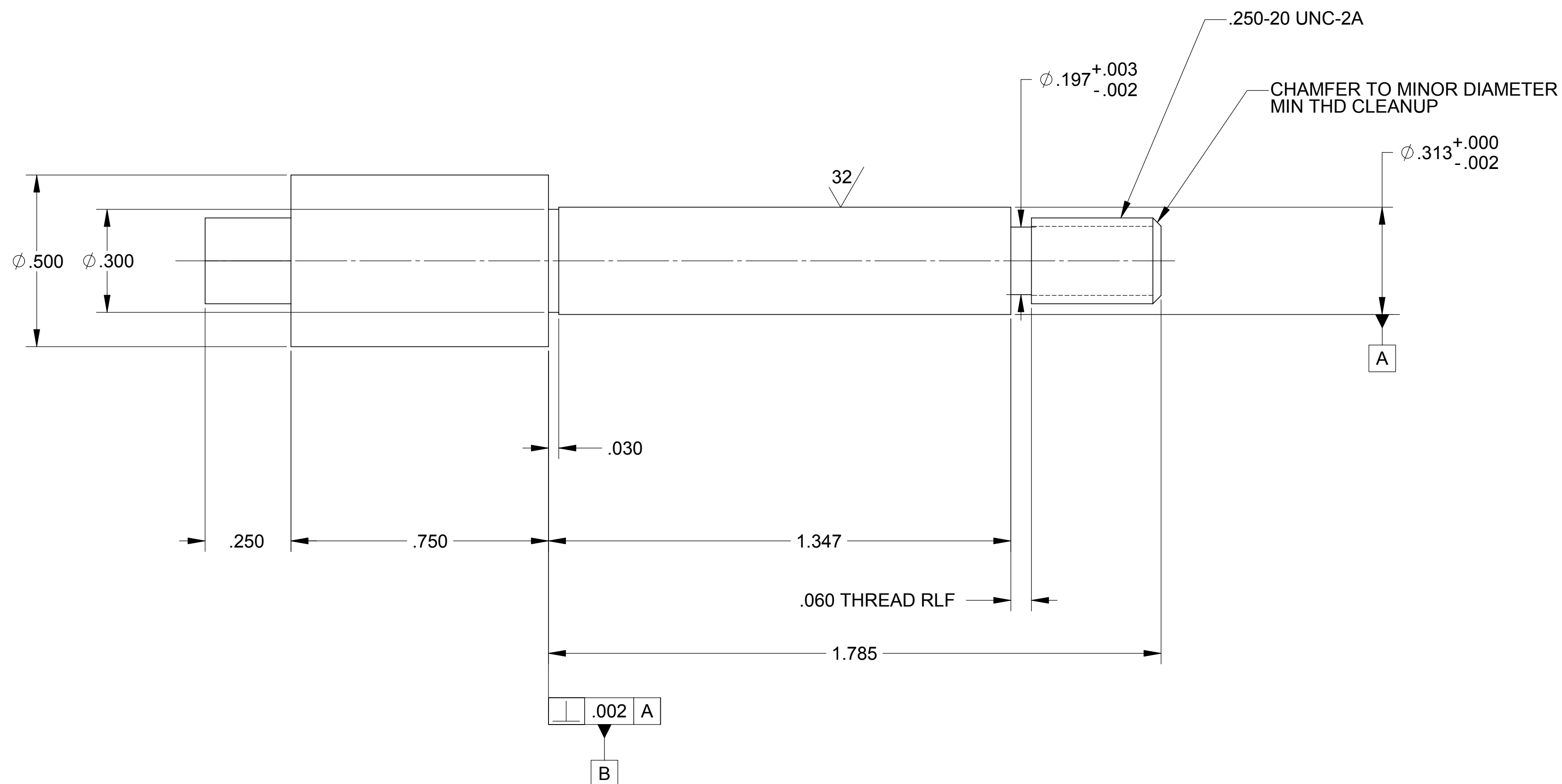
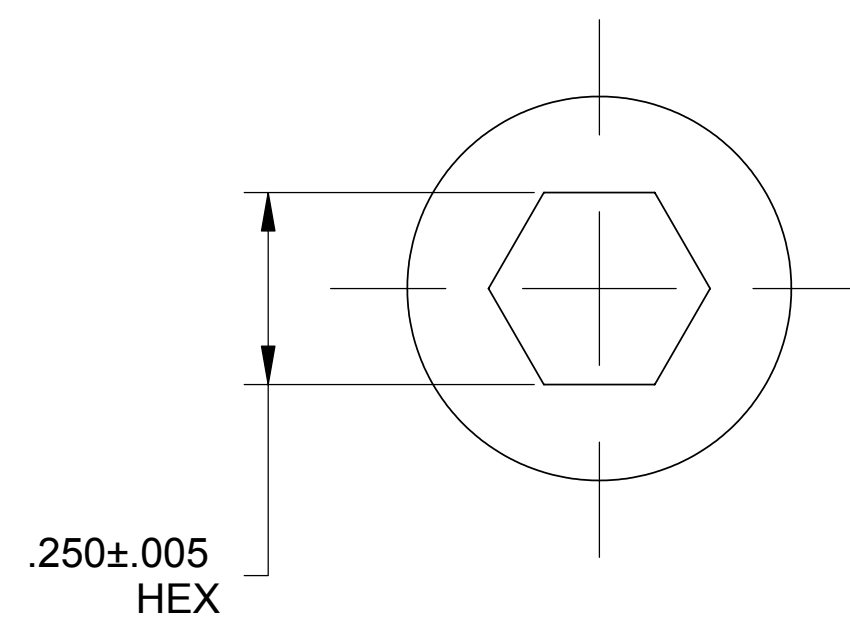
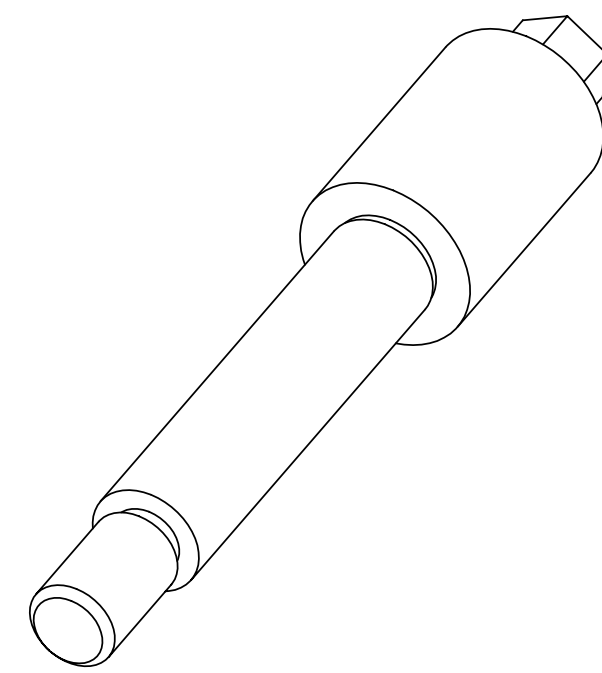


LTR		ZONE	DESCRIPTION	REVISIONS											
DWN	CHK	P-ENG	CONFIG	ME	STRS	MATL	PROJ	QA	RELEASE DATE						
A			INITIAL RELEASE	KS	RF	KS	RF	RK	DCW	DCW	SV	MK	1-24-05		
B			REMOVED ϕ .063 VENTING HOLE AND ϕ .094 CROSS-DRILLED HOLE AND C'SINK NOTE	RF	RF	KS	RF	RK	DCW	DCW	SV	MK	1-25-05		
C			TITLE CHANGED TO REFLECT CURRENT REVISION LETTER	KJS											



NOTES: UNLESS OTHERWISE SPECIFIED.

- ALL PARTS SHALL BE MANUFACTURED IN ACCORDANCE WITH ASI SPECIFICATION 20008225 (LIGO E048225).
- REMOVE ALL BURRS AND SHARP EDGES .005-.015.
- MACHINE FILLET RADII .003-.015.
- IDENTIFY IN ACCORDANCE WITH ASI SPECIFICATION 20006686, TYPE II.
- TOTAL INDICATED RUNOUT OF ALL COAXIAL DIAMETERS SHALL BE .010.
- RECORD WEIGHT TO NEAREST 0.1 LB ON INSPECTION REPORT AFTER FINAL MACHINING. ESTIMATED WEIGHT IS 0.1 LBS.

THIS DOCUMENT MAY CONTAIN ITAR CONTROLLED INFORMATION AND/OR COMMERCE CONTROLLED INFORMATION EXPORT RESTRICTIONS MAY APPLY

FILE ATTACHMENTS
20007816.x_t

QTY REQD		ITEM NO	REF DES	CAGE NO	20007816-1	PART OR IDENTIFYING NO	NOMENCLATURE OR DESCRIPTION	SPECIFICATION	MATERIAL OR NOTE	ZONE
PARTS LIST										
CONTRACT NO		UNLESS OTHERWISE SPECIFIED DIMENSIONS ARE IN INCHES		TOLERANCES		RELEASED 2/4/2005 THIS DRAWING IS PRELIMINARY AND NOT UNDER CONFIGURATION CONTROL UNLESS A RED RELEASED STAMP APPEARS HERE.		ALLIANCE SPACESYSTEMS, INC. 1250 Lincoln Ave., Suite 100 Pasadena, CA 91103		
		DECIMALS .XX ± .03		ANGLES ± 1/2°		DWN KEVIN J SPINK 10/21/04 PROJ ENGR STRS		SHOULDER SCREW, GS-13 LIGO-D047916-C		
		MACHINE FINISH		63		CHK MATL		SIZE D CAGE CODE 1KNU9 SCALE 2:1		20007816 UNCLASSIFIED SHEET 1 OF 1
		DO NOT SCALE DRAWING INTERPRET DWG PER ASME Y14.5M-1994		MATERIAL		CONFIG PROJ ME QA		REV C		
20007970		1388		NITRONIC 60 ASTM A276 OR ASTM A479 OR AMS 5848						
NEXT ASSEMBLY		PROJECT CODE		APPLICATION						