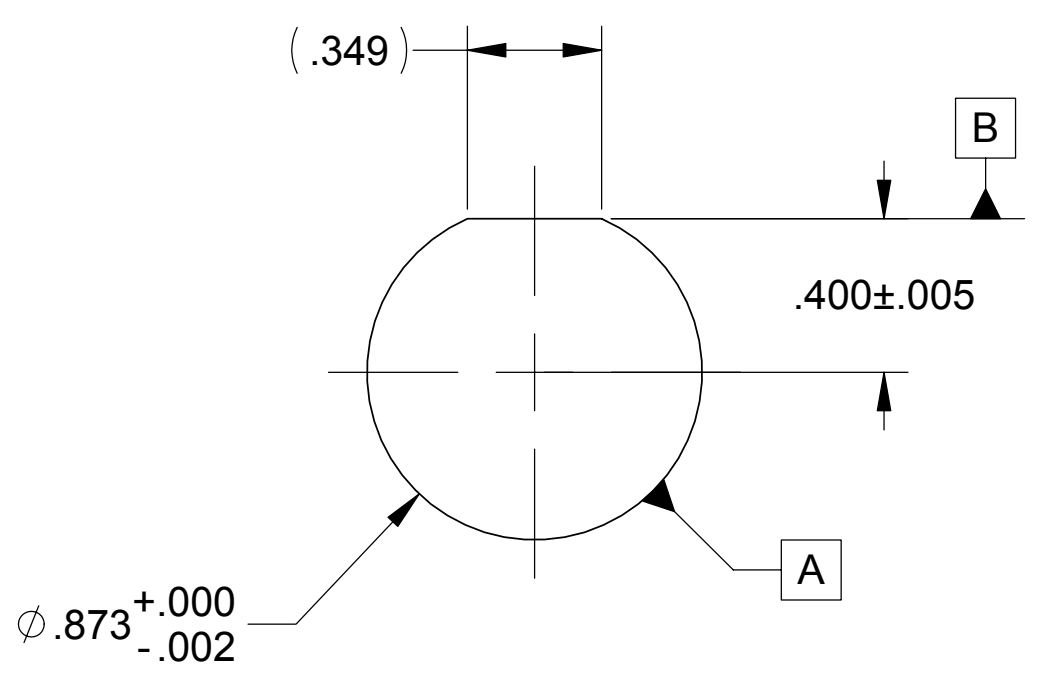
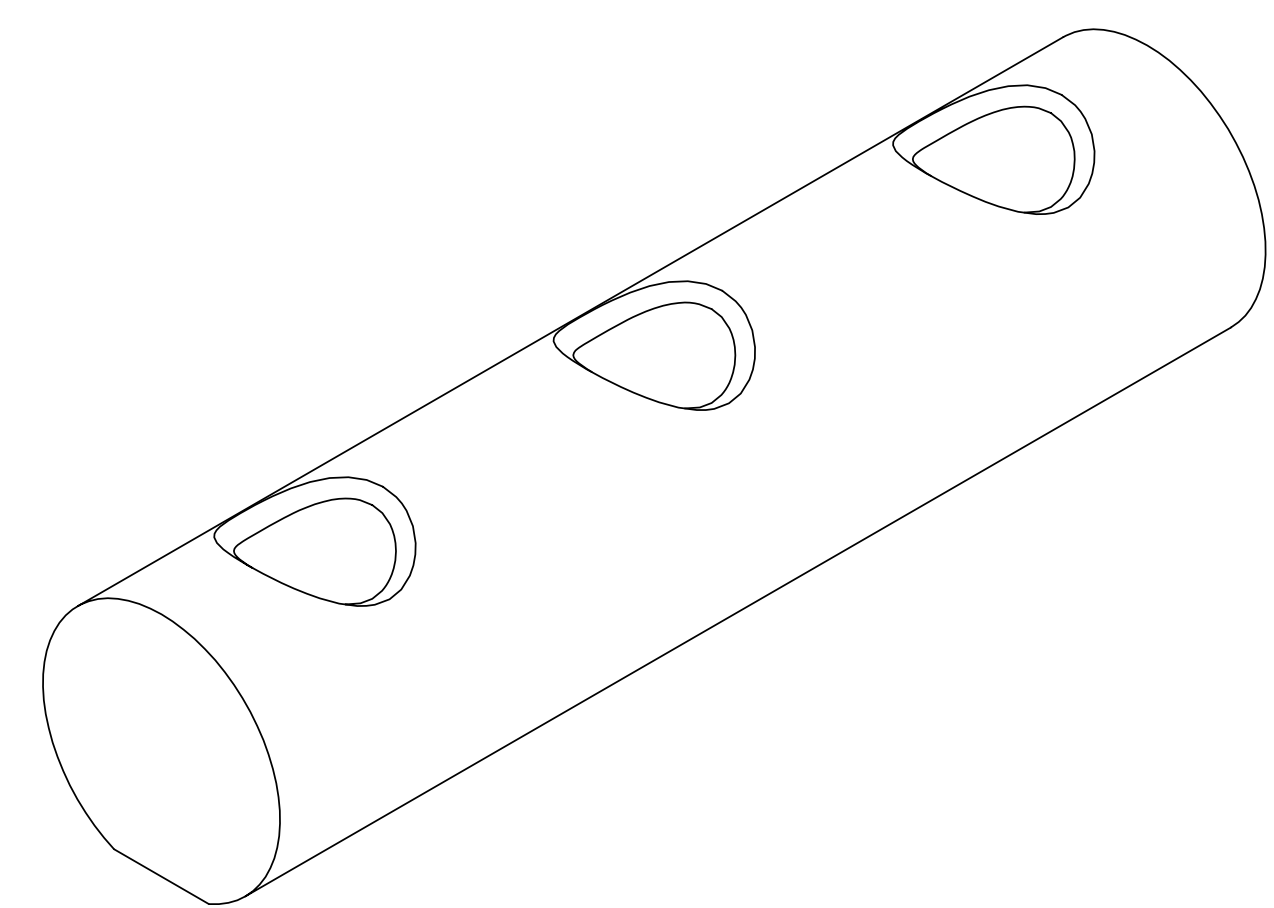
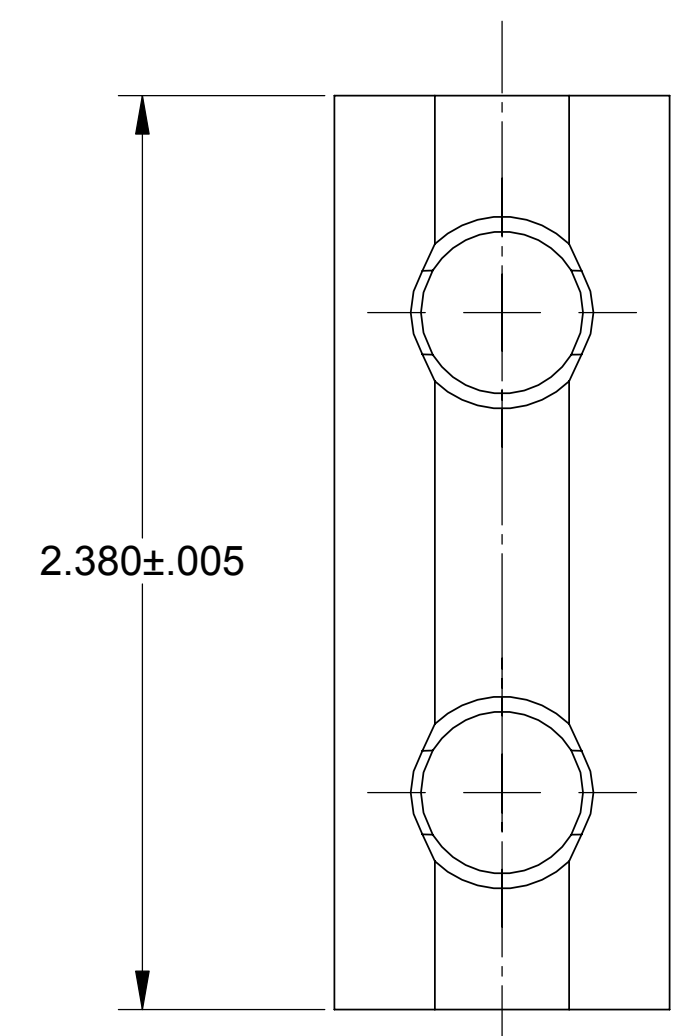
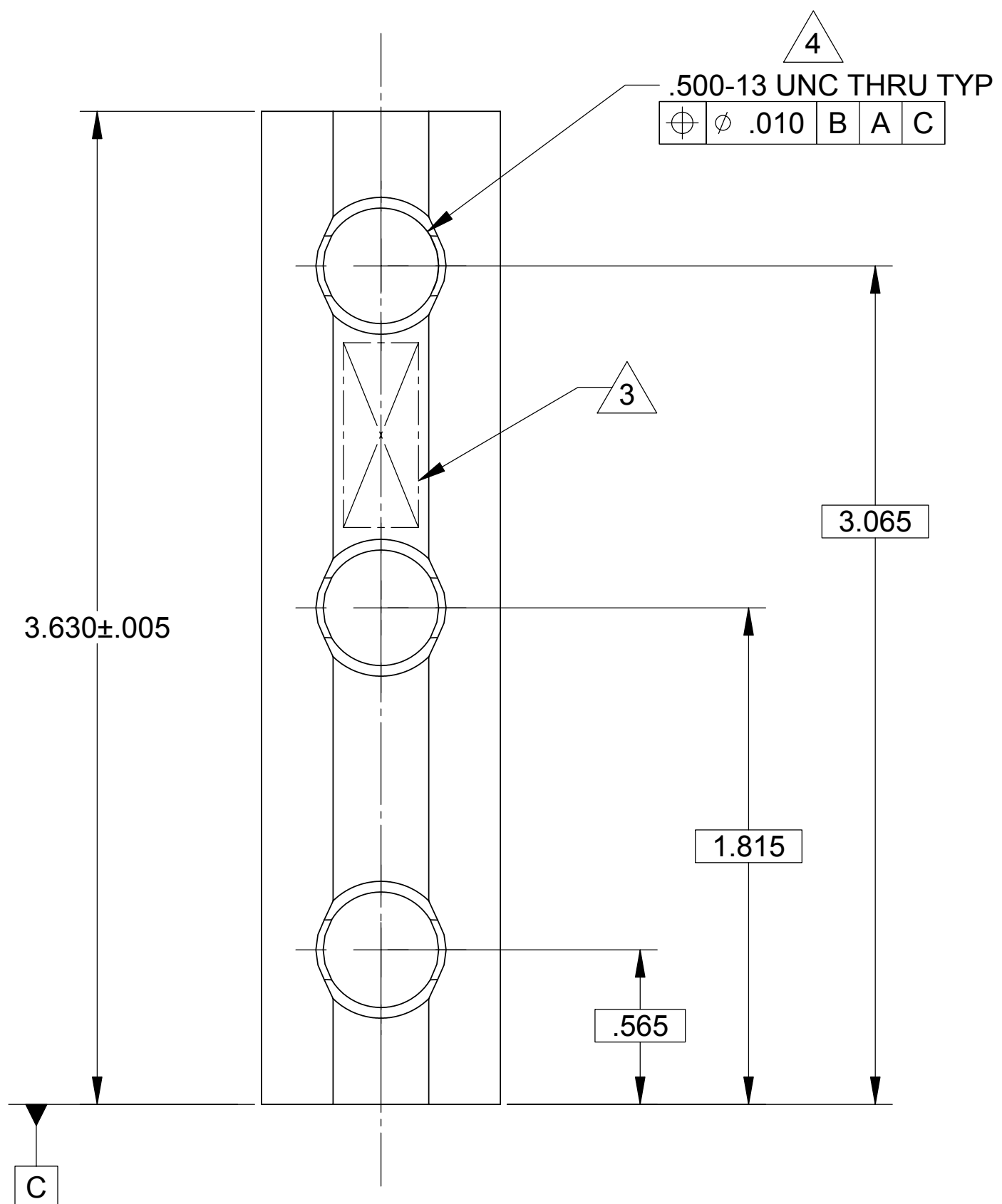


LTR		ZONE	DESCRIPTION	REVISIONS									
DWN	CHK	ENGR	STRESS	MATL	THRM	ME	PROJ	QA	RELEASE DATE				
A				INITIAL RELEASE									



NOTES: UNLESS OTHERWISE SPECIFIED.

- ALL PARTS SHALL BE MANUFACTURED IN ACCORDANCE WITH ASI SPECIFICATION 20008225 (LIGO E048225).
- REMOVE ALL BURRS AND SHARP EDGES .005-.015.
- MARK PART AND SERIAL NUMBER IN LOCATION APPROXIMATELY AS SHOWN USING 0.07-INCH HIGH CHARACTERS IN ACCORDANCE WITH 20006686, TYPE I, CLASSES 4, 5, OR 6. SERIAL NUMBERS START AT 001 FOR FIRST PART AND PROCEED CONSECUTIVELY. PARTS TOO SMALL TO MARK SHALL BE IDENTIFIED IN ACCORDANCE WITH 20006686, TYPE II.
- THREADED HOLES SHALL BE PRODUCED TO A .004-.006 OVERSIZE CONDITION ON THE PITCH DIAMETER BASED ON A 2B CONDITION. THIS DOES NOT APPLY TO THREADED INSERT HOLES.
- COUNTERSINK 82° ALL TAPPED HOLES TO MAJOR DIAMETER +.015/-0.000.
- RECORD WEIGHT TO NEAREST 0.1 LB ON INSPECTION REPORT AFTER FINAL MACHINING. ESTIMATED WIEGHT IS 0.5 LB FOR -3 AND 0.4 LB FOR -2.

20007893-3	BARREL NUT, 3 HOLE
20007893-2	BARREL NUT, 2 HOLE

QTY REQD	ITEM NO	REF DES	CAGE NO	PART OR IDENTIFYING NO	NOMENCLATURE OR DESCRIPTION	SPECIFICATION	MATERIAL OR NOTE	ZONE	
PARTS LIST									
CONTRACT NO		UNLESS OTHERWISE SPECIFIED DIMENSIONS ARE IN INCHES TOLERANCES DECIMALS .XX ±.03 .XXX ±.010 ANGLES ± 1/2° MACHINE FINISH 63 DO NOT SCALE DRAWING INTERPRET DWG PER ASME Y14.5M-1994			RELEASED 1/24/2005 <small>THIS DRAWING IS THE PROPERTY OF ASI AND NOT BE LOANED, REPRODUCED, COPIED, OR IN ANY MANNER DISSEMINATED WITHOUT THE WRITTEN PERMISSION OF ASI.</small>		ALLIANCE SPACESYSTEMS, INC. 1250 Lincoln Ave., Suite 100 Pasadena, CA 91103		
20007890		1388		A286 ALLOY PER AMS 5732 SOLUTION TREATED AND AGED TO 130 KSI UTS MIN		DWN R.D.BILLING 07/26/04 PROJ ENGR STRS CHK MATL CONFIG PROJ ME QA		STAGE 1-2 BARREL NUT BAR LIGO-D047893-A SIZE D CAGE CODE 1KNU9 20007893 REV A SCALE 2:1 UNCLASSIFIED SHEET 1 OF 1	
NEXT ASSEMBLY		PROJECT CODE		APPLICATION		REV 6/04			

FILE ATTACHMENTS
 20007893-2-3.x_t

THIS DOCUMENT MAY CONTAIN ITAR CONTROLLED INFORMATION AND/OR COMMERCE CONTROLLED INFORMATION EXPORT RESTRICTIONS MAY APPLY