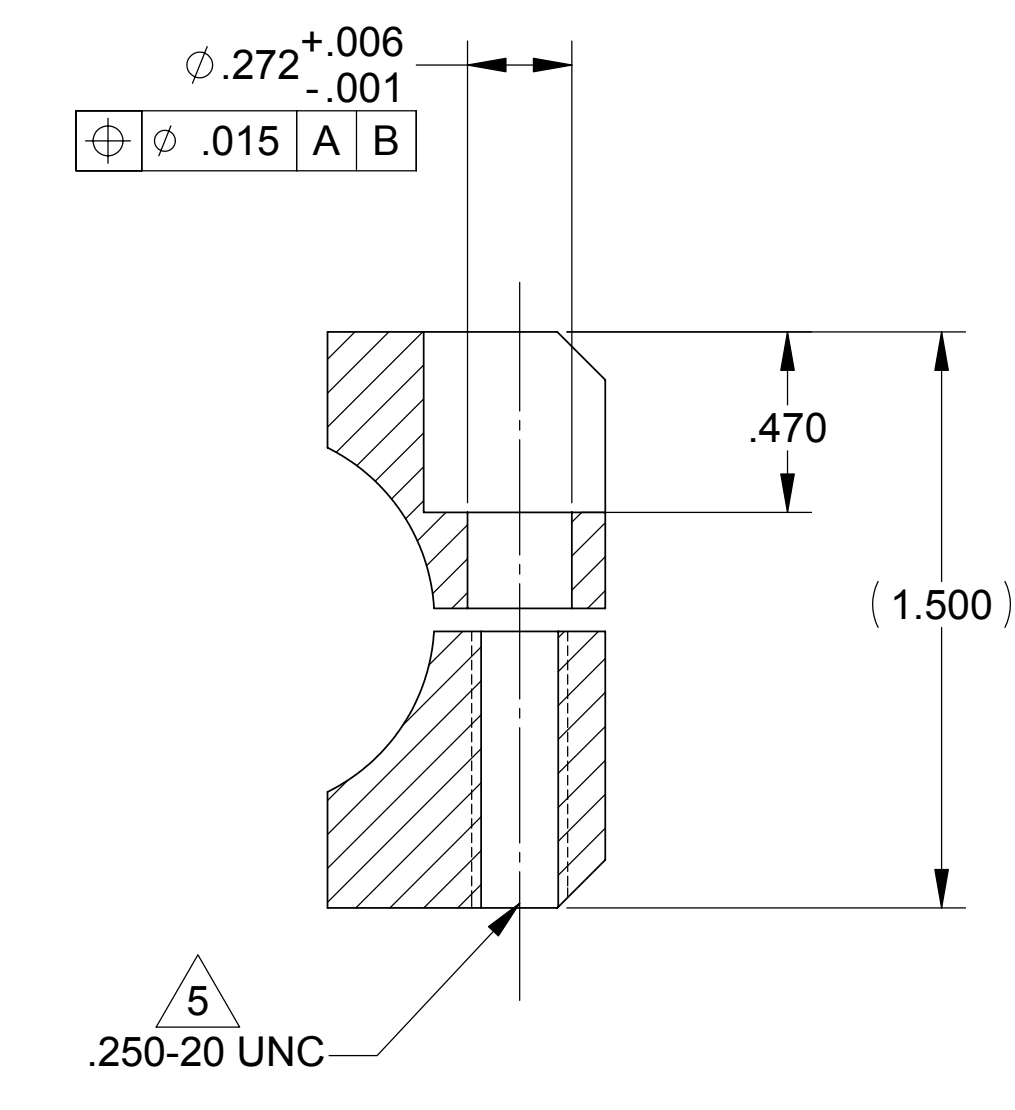
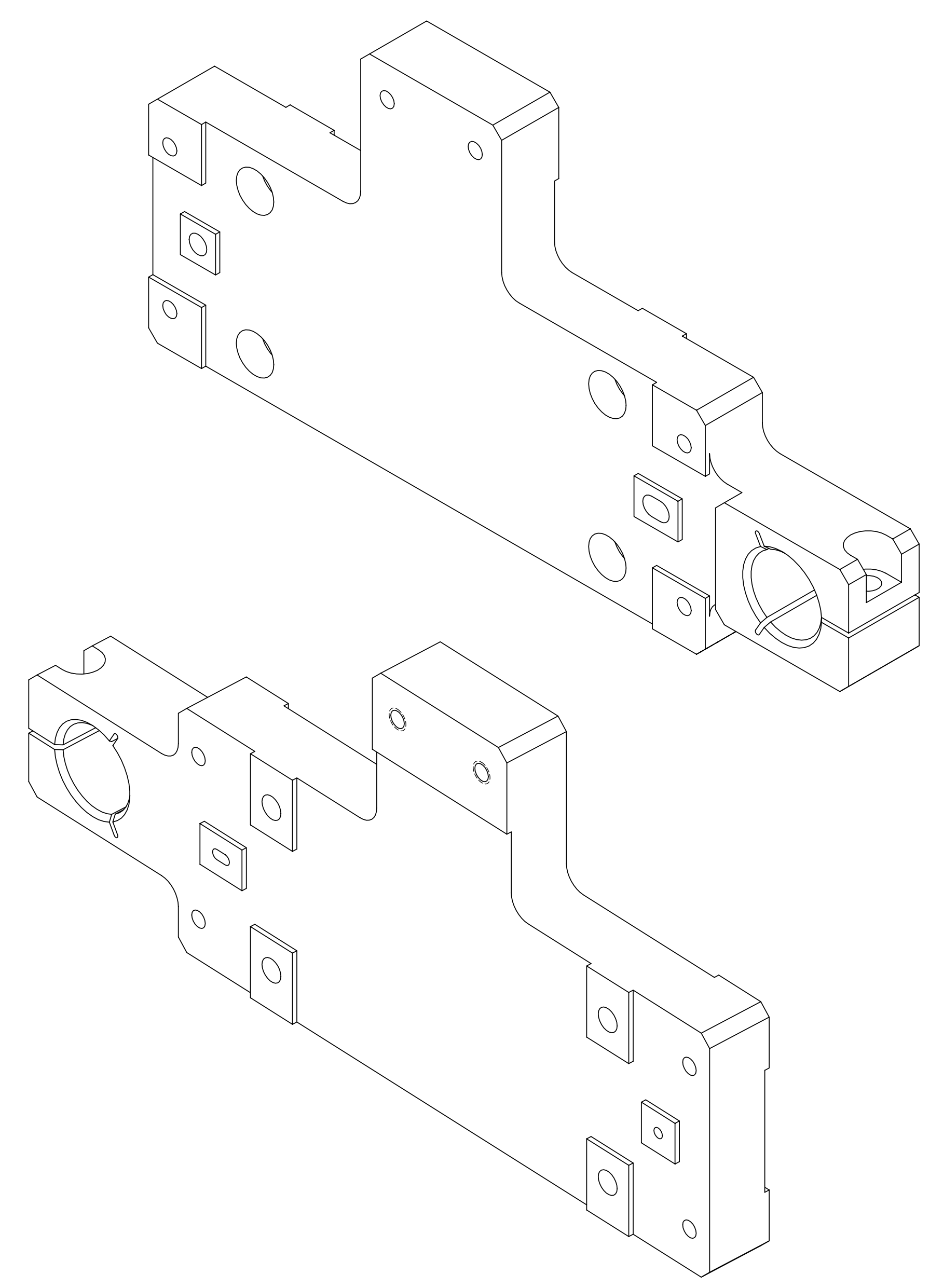
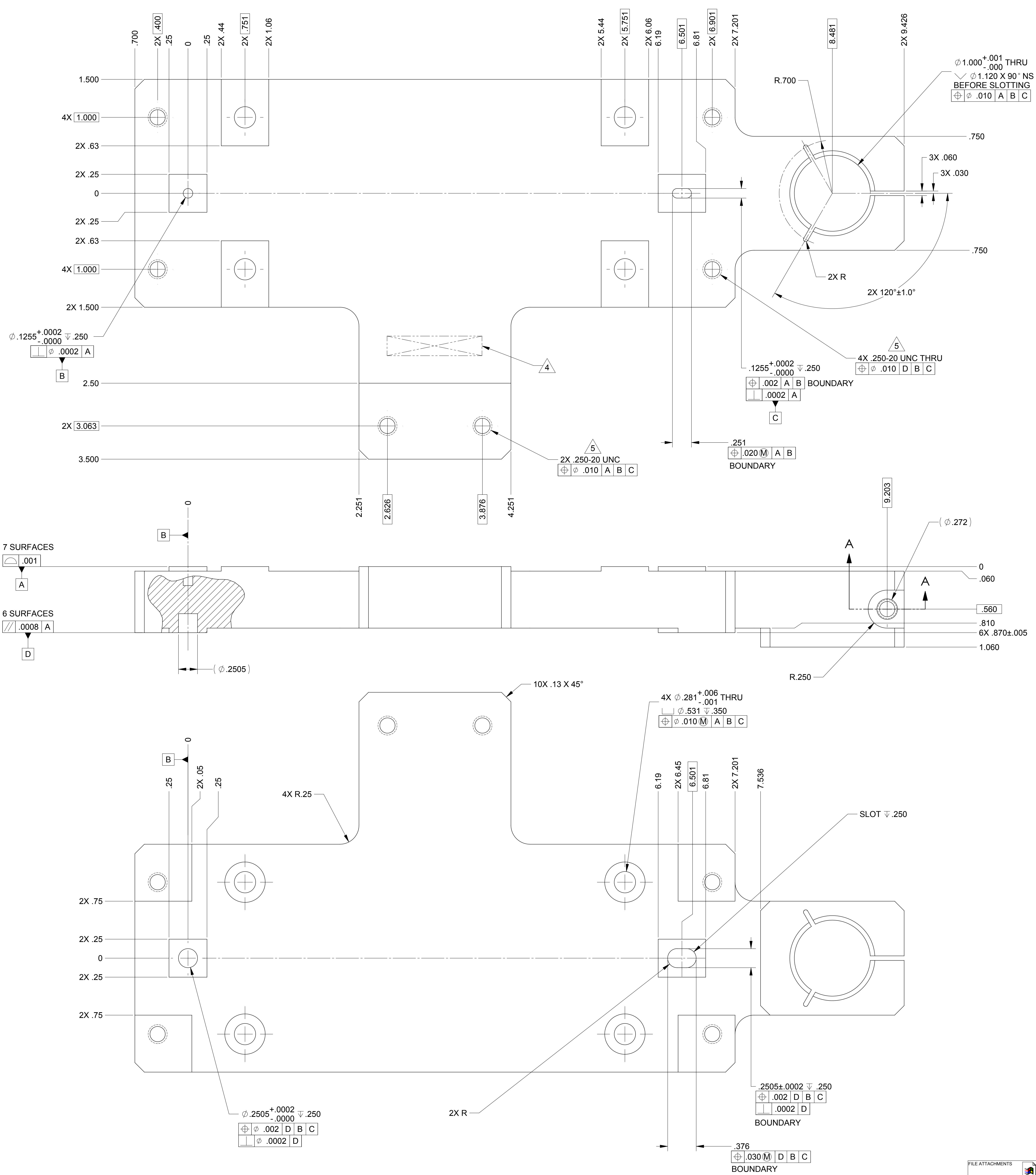


LTR		ZONE		REVISIONS									
				DWN	CHK	P-ENG	CONF	ME	STRS	MATL	PROJ	QA	RELEASE DATE
A				INITIAL RELEASE									



- NOTES: UNLESS OTHERWISE SPECIFIED.
- ALL PARTS SHALL BE MANUFACTURED IN ACCORDANCE WITH ASI SPECIFICATION 20008225 (LIGO E048225).
 - REMOVE ALL BURRS AND SHARP EDGES .005-.015.
 - MACHINE FILLET RADII .003-.015.
 - MARK PART AND SERIAL NUMBER IN LOCATION APPROXIMATELY AS SHOWN USING 0.13-INCH HIGH CHARACTERS IN ACCORDANCE WITH 20006686, TYPE I, CLASSES 4, 5, OR 6. SERIAL NUMBERS START AT 001 FOR FIRST PART AND PROCEED CONSECUTIVELY. PARTS TOO SMALL TO MARK SHALL BE IDENTIFIED IN ACCORDANCE WITH 20006686, TYPE II.
 - THREADED HOLES SHALL BE PRODUCED TO A .004-.006 OVERSIZE CONDITION ON THE PITCH DIAMETER BASED ON A 2B CONDITION. THIS DOES NOT APPLY TO THREADED INSERT HOLES.
 - COUNTERSINK 82° ALL TAPPED HOLES TO MAJOR DIAMETER +.015/- .000.
 - COUNTERSINK 82° ALL DRILLED HOLES .015-.030 DEEP BOTH SIDES.
 - RECORD WEIGHT TO NEAREST 0.1 LB ON INSPECTION REPORT AFTER FINAL MACHINING. ESTIMATED WEIGHT IS 6.6 LBS.

20007905-1									
QTY REQD	ITEM NO	REF DES	CAGE NO	PART OR IDENTIFYING NO	NOMENCLATURE OR DESCRIPTION	SPECIFICATION	MATERIAL OR NOTE	ZONE	
PARTS LIST									
CONTRACT NO		UNLESS OTHERWISE SPECIFIED DIMENSIONS ARE IN INCHES		TOLERANCES		MACHINE FINISH		MATERIAL	
		DECIMALS		ANGLES		125		303 CRES FORGING PER ASTM A 473	
		.XX ± .03		XXX ± .010 ± 1/2°		DO NOT SCALE DRAWING INTERPRET DWG PER ASME Y14.5M - 1994		MATERIAL	
		20007967		1388		DWN R.D.BILLING 07/12/04		PROJ ENGR STRS	
		NEXT ASSEMBLY		PROJECT CODE		DWN P-ENG		MTRL	
						CONFIG PROJ		SIZE	
						ME QA		E 1KNU9	
								CAGE CODE	
								20007905	
								SCALE 2:1	
								UNCLASSIFIED SHEET 1 OF 1	

THIS DOCUMENT MAY CONTAIN ITAR CONTROLLED INFORMATION AND/OR COMMERCE CONTROLLED INFORMATION EXPORT RESTRICTIONS MAY APPLY