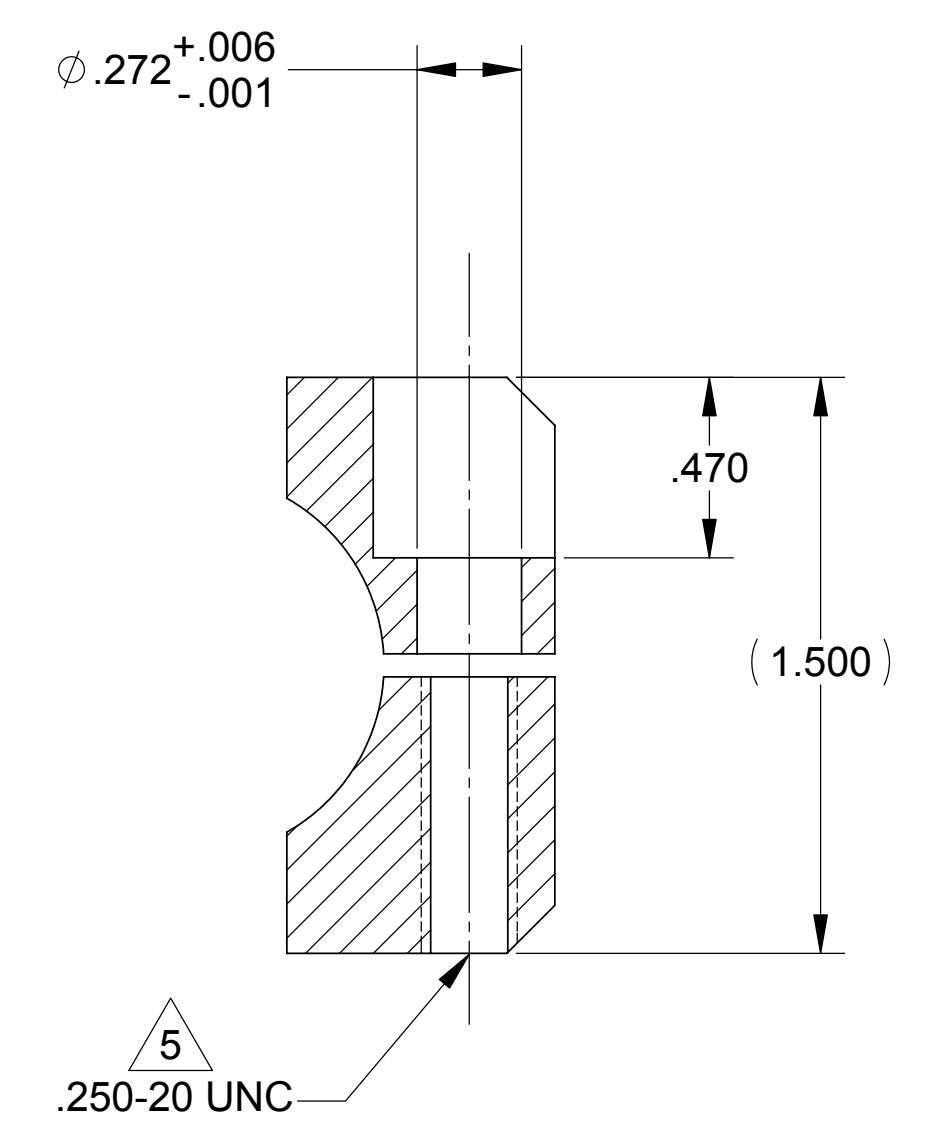
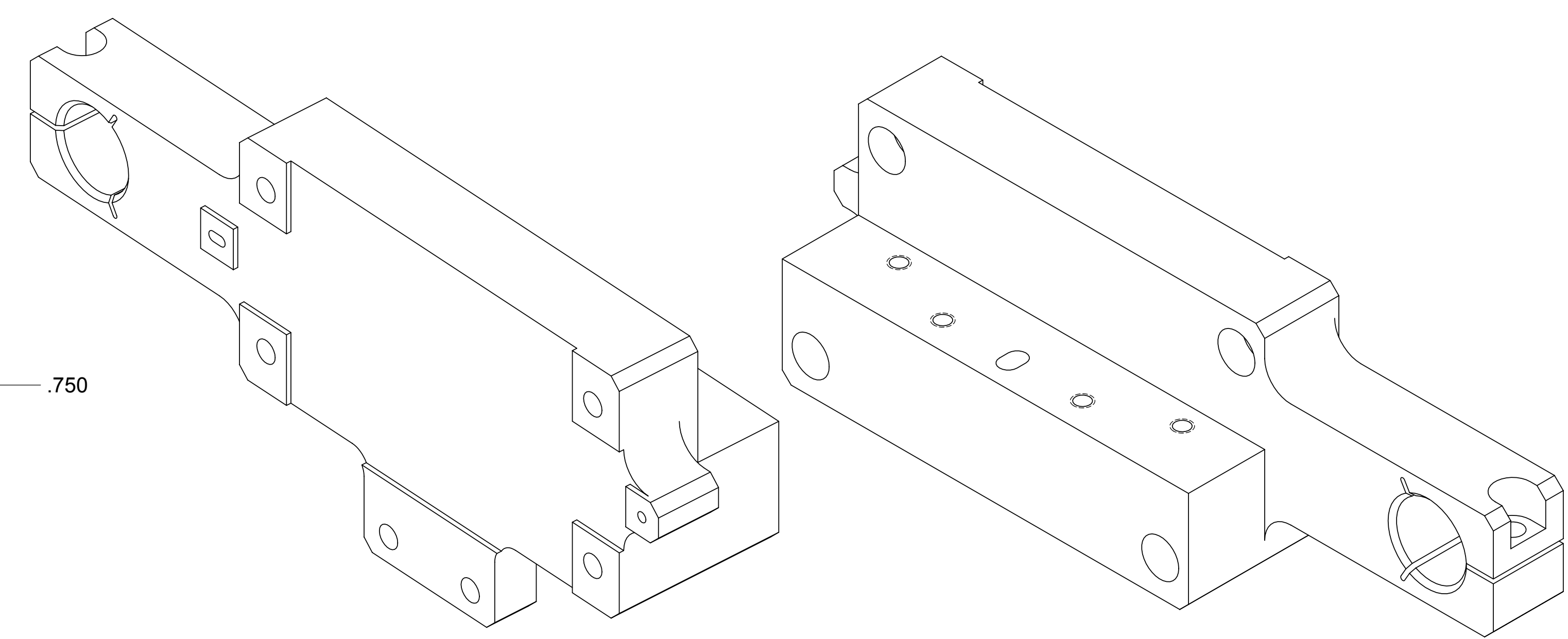
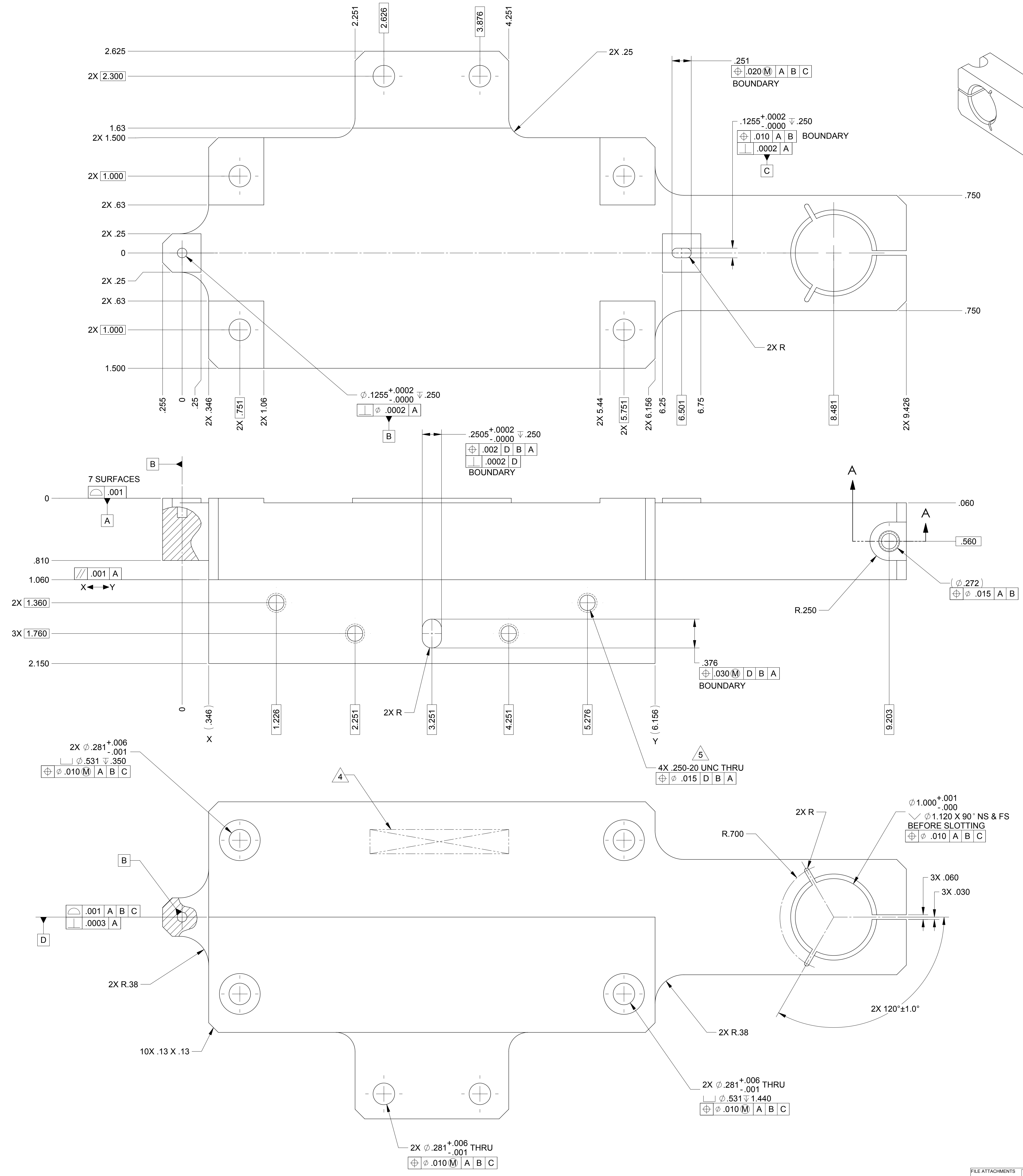


REVISIONS		DWN	CHK	P-ENG	CONF	ME	STRS	MATL	PROJ	QA	RELEASE DATE
LTR	ZONE										
A											



SECTION A-A
SCALE 2 : 1

- NOTES: UNLESS OTHERWISE SPECIFIED.
- ALL PARTS SHALL BE MANUFACTURED IN ACCORDANCE WITH ASI SPECIFICATION 20008225 (LIGO E048225).
 - REMOVE ALL BURRS AND SHARP EDGES .005-.015.
 - MACHINE FILLET RADII .003-.015.
 - MARK PART AND SERIAL NUMBER IN LOCATION APPROXIMATELY AS SHOWN USING 0.13-INCH HIGH CHARACTERS IN ACCORDANCE WITH 20006686, TYPE I, CLASSES 4, 5, OR 6. SERIAL NUMBERS START AT 001 FOR FIRST PART AND PROCEED CONSECUTIVELY. PARTS TOO SMALL TO MARK SHALL BE IDENTIFIED IN ACCORDANCE WITH 20006686, TYPE II.
 - THREADED HOLES SHALL BE PRODUCED TO A .004-.006 OVERSIZE CONDITION ON THE PITCH DIAMETER BASED ON A 2B CONDITION. THIS DOES NOT APPLY TO THREADED INSERT HOLES.
 - COUNTERSINK 82° ALL TAPPED HOLES TO MAJOR DIAMETER +.015/-.000.
 - COUNTERSINK 82° ALL DRILLED HOLES .015-.030 DEEP BOTH SIDES.
 - RECORD WEIGHT TO NEAREST 0.1 LB ON INSPECTION REPORT AFTER FINAL MACHINING. ESTIMATED WEIGHT IS 9.1 LBS.

20007908-1		PARTS LIST		PARTS LIST					
QTY	REGD	ITEM NO	REF DES	CAGE NO	PART OR IDENTIFYING NO	NOMENCLATURE OR DESCRIPTION	SPECIFICATION	MATERIAL OR NOTE	ZONE
CONTRACT NO		UNLESS OTHERWISE SPECIFIED DIMENSIONS ARE IN INCHES		TOLERANCES		DECIMALS		ANGLES	
		MACHINE FINISH 125/		DO NOT SCALE DRAWING		INTERPRET DWG PER ASME Y14.5M - 1994		MATERIAL	
		CRES 303 FORGING		PER ASTM A 473					
20007966		1388		20007908_x_1					
NEXT ASSEMBLY		PROJECT CODE		APPLICATION					
DWN		R.D.BILLING		07/14/04		PROJ ENGR		STRS	
CHK		MAY				CONFIG		PROJ	
ME		QA				SIZE		CAGE CODE	
						E		1KNU9	
						SCALE		1:1	
						UNCLASSIFIED		SHEET 1 OF 1	

ALLIANCE SPACESYSTEMS, INC.
1250 Lincoln Ave., Suite 100
Pasadena, CA 91103

STAGE 0-1
HORZ ACT FIELD ADAPTER
LIGO D047908-A

20007908
REV A